

SLIP END & DISTRICT PARISH NEWS

SEPTEMBER
2005





On our colour pages this month, Parish News brings you a few local pictures, some fairly obvious, but that's an unusual view of Church Road (above) and what's that seal about? Answer next month ... be sure you get your copy!

The Parish @ Large

SCHOOLS

*Slip End Lower: 720152
Five Oaks: 726058
Streetfield: 613421
Ashton: 663511
Manshead: 608641*

HALLS

*Village Hall: 723109
Recreation Hall: 455185*

SPORT

*Bowling Club: 412506
Tennis: 733253
Darts League: 425323
Football: 733156
Cricket: 414157*

COMMUNITY

*Brownies: 723109
Beavers: 725297
Cubs: 414168
Fly Tipping (SBDC): 472222
Friendship Club: 720392
Slip End Assoc: 414796
Mother's Union: 738435
Playgroup: 728865
Toddler Group 405931
Allotments: 736892
PTA: 720152
Women's Institute: 421034
Police: 471212
Aircraft noise: 395382*

PARISH COUNCILLORS

*Christine Benson: 456200
Christinebenson@bensons-autosupplies.co.uk
Stephen Fuell: 417792 steve.fuell@tinyworld.co.uk
Betty Sentinella: 722207 Sentinellab@yahoo.com
Philip Penman: 455185 PhilipPenman@aol.com
Geoff Daniel: 424363Geoff@daniel67.freemove.co.uk
Ken Crossett 414168 kencrossett@slipend.co.uk
Mike McKeivitt: 720596
mike.mckeivitt@mndassociation.org
Clerk to the Parish Council - David Haste:
10 Highwood Grove, Mill Hill, NW7 3LY
Davidhaste7@aol.com*

DISTRICT COUNCILLORS

*Anne Spencer 713267 anne@connorspencer.com
Philip Penman: 455185 PhilipPenman@aol.com
Ruth Gammons 738398 fairgreen@btopenworld.com*

COUNTY COUNCILLOR

Richard Stay: 724685 Richard.Stay@bedscc.gov.uk

CHURCHES

***New Life Christian Fellowship**
Sunday Main Celebration: 10.45
Minister: Rev James Fotheringham 414648
(jfoth@tesco.net)
Administrator & Information:
Alasdair Tompson 737039 (nlcf@trustpro.co.uk)*

***St Andrew's Church**
Rev Joy Daniel 01582 424363
Wardens: David Kingston 416138
Ken Crossett 414168*

***Aley Green Methodist Church**
Minister: Rev Julia Dowding 730129
Senior Steward: Ann Meader 733668*

SHOPS & SERVICES

***Post Office:** At the Crossroads, telephone 401069
Mon-Fri 6.30 to 21.00
Sat-Sun 7/7.30 to 21.00*

***Garage:** Slip End Garage, Markyate Road, telephone 456888*

Website: slipend.co.uk

This issue of Parish News has been sponsored for “global” circulation by the Slip End Parish Council and includes the Annual Report issued by the Council which details issues which have been considered and acted upon over the past year. Parish News thanks our hard working councillors for using Parish News as the medium for promulgating this: additionally they are thanked for doing the distribution chore this month giving our regular distribution team a well deserved month off! Parish News urges everyone in the Parish to keep an eye on council goings on: why not call in at the monthly council meetings in the Village Hall from time to time? As you will see from the Agenda for September's meeting, there are matters which will effect us all.

SLIP END PARISH COUNCIL

The next meeting of the Parish Council will be held on Monday 5th September 2005
at 8 pm in the Village Hall at Slip End.

David Haste (Clerk/Administrator)

17th August 2005

Tel & Fax: 0208 201 1079

10, Highwood Grove, Mill Hill, NW7 3LY

AGENDA

1. Apologies for absence.
2. Declarations of interest.
3. Minutes of the meetings of July and August 2005.
4. Matters arising from those minutes.
5. Progress report on outstanding issues.
6. District Councillor's report.
7. County Councillor's report.
8. Policing matters.
9. Proposed changes to mobile library visits.
10. Pending legal action against County Council.
11. Administration procedures & related matters, including:
 - (a) Vacancy on the Council.
 - (b) Annual Report 2004/5.
 - (c) Deposit account review.
 - (d) Request for grant from Slip End Scout Group.
 - (e) Request from SBDC for visit on 7th November.
12. Planning matters.
 - (f) To consider any applications received.
 - (g) To receive copies of planning decisions.
13. Accounts for payment.
14. M1 Road widening.
15. Any urgent matters raised by Councillors.
16. Date of next meeting (set for 3rd October).
17. Meeting open to the public.

The confirmed minutes of this meeting may be inspected, by arrangement with the Clerk, at any convenient time after 5th October 2005. The draft minutes may be found on the website after 12th September 2005.

ANNUAL REPORT 2004/2005

Introduction

During the year 2004/5 the Parish Council continued to pursue its objectives of improving the quality of life for the residents of the village and providing services in the most efficient and cost effective manner. There were two changes of personnel during the year: Mrs Sue Lyons and Mrs Betty Sentinella resigned after many years service to both Slip End and the former Caddington & Slip End Parish Councils. One replacement was Mike McKevitt, a resident of Crawley Close. The second vacancy has not yet been filled.

Dispute with County Council

As previously announced, the Parish Council increased its precept during 2004/5 by roughly £10 per household in order to create a “fighting fund” to support the ongoing dispute with the County Council over its management (or rather lack of management) of the Timberlands site. The Parish Council has been pursuing two courses of action in relation to the site, firstly a political one in order to try to persuade the County and District Councils that Timberlands is not a suitable site and, secondly, a legal one to try to force the County Council to take action to either close the site or to dramatically improve the management. Prior to taking direct legal action the Parish Council had first to obtain the best advice possible as to both the course of action to pursue and to the merits of its case.

The last, and probably final, meeting with Counsel took place in May 2005 but it is probably best to deal with its outcome in this report. In brief members were advised that the Parish Council does not have the right to take legal action on the basis of nuisance or damage suffered by parishioners. It does have the right

to pursue a case under the banner of “human rights” but members were advised that the chances of success were small and that the best prospect of securing either closure or improvements to the site were via the political process. Reluctantly members have decided to accept that advice.

It would be appropriate at this point to mention the resolute and continuing support that the Parish Council has received from our local County Councillor, Richard Stay who has been a tower of strength and a reliable source of advice. Similar support has also been received from District Councillors Anne Spencer and Ruth Gammons (the third District Councillor, Philip Penman, is of course, a member of the Parish Council).

Closed Circuit Television

During the course of 2004/2005 both projected schemes, at the Playing Field and at the Village Hall, were finally brought into service, thanks in no small measure to the untiring efforts of Councillor Steve Fuell. He not only drove through the initial installations, a Herculean task in itself, but also had the patience and determination to sort out the inevitable teething troubles.



Coronation Gardens

Residents of Slip End will be delighted to learn that it has been decided to refurbish, renovate



and revitalise the Coronation Gardens at the cross roads. These occupy the site diagonally opposite the Post Office and have been somewhat neglected of late. A small committee, chaired by Councillor Geoff Daniel, has come up with some proposals which are at present being costed. The Parish Council has promised some financial support, the Highways Authority has already undertaken to widen the footpath and a number of local businesses have been approached for sponsorship. Watch this space !

Crawley Playground

In addition to the CCTV project the Parish Council plans to replace some of the equipment and its safety surfaces in the not too distant future. More money would be available if the Parish Council did not continually have to pay out for repairs caused by mindless vandalism. Fair wear and tear is one thing, deliberate damage to a valuable village facility is an entirely different matter and the Council will not hesitate to prosecute if sufficient evidence comes to hand.

Front Street

You will note that the refurbishment of the grass verges and “eggboxes” has taken place up to number 20. The Council hopes eventually to replace the unsightly verges wherever possible. The Council has also secured the provision of wooden stakes along



parts of the Markyate Road and Crawley Close which have had a beneficial effect on parking in those areas.

Church Road Bus Stops

This is another Geoff Daniel led project although he has received strong practical support from County Councillor Richard Stay.



Geoff decided some time ago that the residents and staff of the Home in the Old Vicarage deserved their own bus stop and he has been campaigning for this ever since. His colleagues on the Parish Council provided moral support but expressed serious doubts as to his chances of success. However, perseverance appears to have paid off and at the time of writing the bus stops are in place on both sides of the road and fully operational. *(Stop press: the bus stop flags have now been fitted and we are in business !)*



Policing

Councillors are committed to ensuring that Slip End receives an adequate and effective policing service.

Senior police officers have attended meetings of the Parish Council to hear of members' concerns. This is an issue which requires constant pressure and vigilance. The Council is in contact with the Divisional Commander over the delay in replacing our Police Community Support Officer.

Other matters

The projects mentioned above form only part of the work of the Parish Council. Members battle constantly to ensure that minor works and repairs are undertaken, sometimes by the Council itself and more often by the authority responsible. The Chairman represents local interests on the Luton Airport Committee and on the Chilterns Conservation Board. The Council continues to provide grants for a number of local organisations (usually those who take the trouble to ask) especially to the Trustees of the Playing Field. The Village needs the playing field but the Playing field badly needs the support of the villagers if it is to survive. The Council is also supporting plans for a skateboard park.

As already mentioned, one of our members, Philip Penman, was elected to the District Council on which he is already a member of the Executive. The Clerk has successfully completed his studies for the AQA Certificate in Local Council Administration. The Chairman has become a grandmother for a second time.

Please don't forget the Parish Council meets on the first Monday of every month except August in the Village Hall (Bank Holiday Mondays excepted when we meet on the Monday following). Everyone is welcome and will be given the opportunity to speak.

CRAFT FAYRE

At The Village Hall

*Saturday September 10th
11am to 3pm*

PILATES

*Following the summer break,
our Groups restart on
Wednesday 14th September
at Slip End School:*

Beginners at 7pm
Intermediates at 8pm

To meet demand we are beginning morning courses in the Peter Edwards Hall: on Tuesdays a Beginners Group starts on 20th September at 9.30am.

For more information call me on 01582 458886.

Andrea Gregory

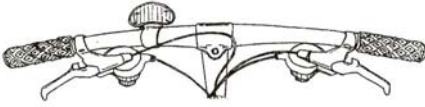
FARLEY HILL METHODIST CHURCH

On Wednesday 14th September at 12.30, Farley Hill Methodist in North Drift Way, will open a Monthly Luncheon Club for the community. A two course meal with tea will be served for just £2.50 and vegetarian food will be available. (sounds excellent value, Editor). The Club is intended for anyone who feels like dropping in for a good, leisurely lunch and "chat" with friends old and new.

The Luncheon Club will be open monthly on each second Tuesday.



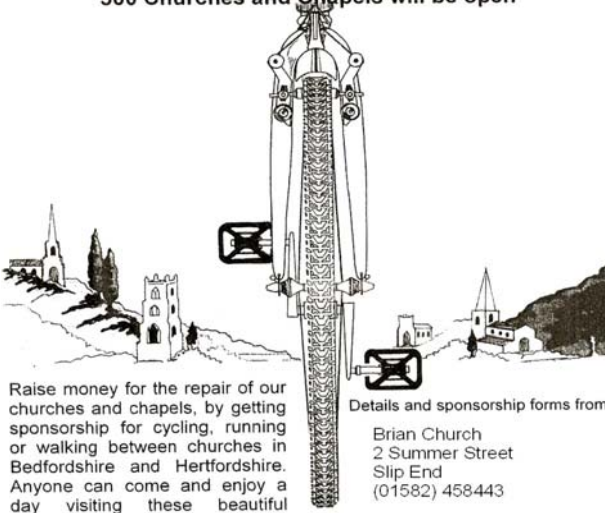
Sponsored Cycle Ride and Walk



Saturday 10 September 2005

10 am to 6 pm

500 Churches and Chapels will be open



Raise money for the repair of our churches and chapels, by getting sponsorship for cycling, running or walking between churches in Bedfordshire and Hertfordshire. Anyone can come and enjoy a day visiting these beautiful buildings.

Registered Charity No 1005697

Details and sponsorship forms from:

Brian Church
2 Summer Street
Slip End
(01582) 458443

**ST ANDREW'S CHURCH
WILL BE OPEN ALL DAY
ON SEPTEMBER 10TH
FOR THE HISTORIC
CHURCHES TRUST SPON-
SORED CYCLE RIDE, TO
WELCOME NOT JUST
VISITING CYCLISTS BUT
ANYONE FROM THE
COMMUNITY WHO
WOULD LIKE TO DROP
IN FOR A CHAT AND A
CUPPA OR JUST TO
TAKE A LOOK AROUND.
YOU'RE WELCOME!**

WOMEN'S INSTITUTE

Our August speaker had another commitment during the evening, we listened to her talk before proceeding with the monthly business. Mrs Felson had come to give us an insight into "the Jewish Women's Way of Life". I for one was looking forward to her talk as when I was growing up during the war we had Jewish families move to Luton away from the London bombings. I used to love their humour and friendliness.

It came as a shock to me to learn that their synagogue in Bury Park had been vandalised leaving the one hundred families still here to hold their religious meetings in a private house. We were shown a video of a Jewish marriage, very precious to our speaker, as it was her daughters big day. If the couple do not stand under a canopy for the ceremony, be it posh or make-do, the wedding is invalid. During the ceremony the bridegroom breaks a goblet by putting his foot on it symbolically. Mrs Felson laughing said "its his last chance to put his foot down". The humour is still there and her talk very informative.

A few members from Caddington joined with representatives from other groups for a coach outing to Suffolk, Constable country, including three rivers. We booked a boat on River Alwell for a trip and refreshments along the way. As usual, we all had a good natter in lovely company: this was a really good day out! Our meetings held at 7.30 on 3rd Tuesdays in the month at the Baptist Church Hall in Caddington. We would love to see you there.



**Women's
Institute**

Patricia Crick

Wimbledon Ticket Draw

The annual draw is held at the AGM in early April, for the three pairs of tickets, provided by Beds LTA. Members who have not previously received tickets through the Club are included in the first draw, ensuring the first pair of tickets goes to a "new recipient". Other interested members are included in next draws for the two pairs of remaining tickets.



Wimbledon 2006 Public Ticket Ballot

The LTA commitment is to ensure that as many "grass roots" enthusiasts, rather than corporate clients, receive tickets, which has been proved correct by the number of successful applicants locally.

The village was well represented at this years tennis championship (as spectators not as players!) David Turner, Brian Church and the Bloomfield family all obtained a pair of tickets through the Slip End Tennis Club members draw. Peter Smith, Alan Buttery, Steve Lyons and Nigel Croft were successful in obtaining tickets through the Wimbledon Public Ballot.

If you are interested in applying to enter the public ballot to purchase 2 tickets, write to address below before 15 December. Enclose a stamped and addressed envelope for the reply and only one application per family is allowed)

The All England Lawn Tennis
& Croquet Club
PO Box 98
Church Road
Wimbledon SW19 5AE

For local enquiries call Steve Lyons on 01582 414162.

Anyone for Tennis ???

Slip End Tennis Club was formed in 1987 and is affiliated to the Beds Lawn Tennis Association. It has two hard courts, which were refurbished in May 2002, sited at Slip End Playing Fields, Church Road, Slip End. It is a small friendly club with about fifty members on our books.

Annual memberships run from 1st April each year and costs are:

Juniors (those in full time education): £14
Seniors £26 & Family £38

(There is a reduction for early payment of subscriptions also part year membership).

Club members have priority use of courts, except when matches are played. The general public are welcome to use the courts, when not in use by club members, cost: £1 per person.

Club night is on Monday evenings and Adult night on Wednesday evenings, both from 7pm, to which all members are welcome. Junior coaching is provided by our LTA coach, Sally Parry on Fridays, £3 per session. Beginners 4.45 to 5.45pm and Intermediates 5.45 to 6.45pm. Ladies and Private coaching is also available. (Give Sally a call 413501).

We have men's and mixed doubles teams in the South Beds Summer League.: also a men's doubles indoor, men's and mixed doubles outdoor teams in the Winter League.

New Members are welcome. Enquiries: call Peter Smith 733253 or Steve Lyons 414162.



*Peter Smith in action!
Hopefully the Tennis Club will be holding another of their popular Quiz Nights during the winter: watch this space!*

KEEP UP WITH SLIP END & DISTRICT NEWS !

This month 'Parish News' is sponsored for distribution throughout the village by the Parish Council. Many Thanks PC!

Do you see the magazine regularly each month?

If not, and you would like to do so, *please complete the slip below* and send it with the £3.50 annual subscription to:

Brian Church, 2 Summer Street, Slip End ☎ 458443

If you live outside the village, the subscription for *postal delivery* (11 issues per year) is at present £6. All other subscriptions through your regular distributor please). Brian will also deal with problems if you already subscribe but your copy is not delivered regularly.

Something to Advertise?

Call Steve Lyons ☎ 414162 SteveSueLyons@aol.com

Our pages are also published on www.slipend.co.uk reaching a far wider community than our local area. This site also has much more of local interest.

We're always pleased to hear from you!

If you have something interesting to report about village activities, pictures, holiday adventures etc, please send us some 'copy' to add to that from our regular contributors. ***We have heard on the grapevine that a local youngster has achieved great success at Karate. PN was not aware that a Karate Group meets in the Village: please get in touch, we'd love to feature this! Also, whilst on the soapbox, lets have some input from the local Beavers & Cubs group, please.***

Articles for the next issue should be sent, if at all possible by the 15th of the month before publication, to:

Sue Cowell, 83 The Crescent, Caddington ☎ 733507) parishnews@slipend.co.uk
or David Kingston 7 Crawley Close, Slip End davidgoodmankingston@hotmail.com

I would like to receive Parish News regularly and enclose the annual subscription (£3.50 or £6 for postal delivery). Please make cheques payable to Slip End & District Parish News)

Name

Address



DEBBIE PAPWORTH

It is with great sadness that Parish News reports Debbie's death, towards the end of last month. St Andrew's Church was packed to overflowing for her funeral, a reflection of how Debbie was known and loved by her family and so many friends and neighbours.

The Reverend Joy Daniel spoke very warmly about Debbie. Although suffering illness and hardship over a long period, Debbie remained sensitive to those around her and we heard how valiantly she overcome her ill health to show love and concern for others.

We heard how this very special lady remained an avid support of Luton Town: indeed, her coffin was draped by the LTFC banner and many there wore club shirts. "Once met, never forgotten: big-hearted and generous", Debbie loved life and friends so her passing is felt keenly by so many people around the community and particularly the folk at the Slip End Recreation Club.

We offer our condolences to Ivan and the rest of her family at this desperately sad time.

The July NCH envelopes in the Church raised £67 and the Christian Aid envelopes raised £20. The July coffee evening was well supported, £38 was raised towards the re-wiring costs.

Our preserves team thank all who gave produce for making into jam, jellies and chutney. We said goodbye to Kay and Les Ruckley who moved to be nearer their family. We gave them a photo album with pictures of the church, its members and activities and some money to buy something for their new home. They will be very much missed by us all.

Sun 4th September 11am Church re-opens after the re-wiring. (Adults only)

Sat September 10th Cake stall outside the co-op in aid of NCH.

Sun 11th September 11am Sunday School re-starts. The adult service will be led by members of the church.

Wed September 14th Coffee evening from 7:30 at the church. All are welcome to come and see the work we've had done, browse over the books, have a chat and buy some homemade cakes and preserves.

Sat 17th September 2:30 we will be taking part in the Caddington village show, at Heathfield Lower school. As well as our members entering items in the various categories we will have our preserve stall for you to look at.

Sunday 25th Sept. 11am: Harvest Festival Service led by Rev Jenny Spouge.

Monday 26th September 7:30: Harvest Auction (in aid of The Methodist Relief and Development fund). Flowers, fruit, vegetables, tinned and packet food can be bid for. Come along and bring your friends.

Sat 8th October 2:30pm Aley Green Autumn Fayre. Lots of stalls, lots of fun.

With love & prayers from all at Aley Green

Many readers will have noticed some recent changes and developments at the garage, with the introduction of both Subaru and Isuzu ranges to the Citroen models on sale: so the Parish News motoring correspondent was despatched to chat to Dennis and Geoff Flitton and to see what is afoot.

“Over the years our Citroen business has developed significantly and we seek to maintain and increase that side of the business in the future.” Dennis went on to explain that the products offered by Subaru and Isuzu are complementary to their popular Citroen range. “This is a great step forward for us, we have worked hard over the last few months to dovetail the new operations into our established business, in the showroom and within our Servicing and Parts Departments.”

In the Service Office Geoff Flitton, speaking in his calm, unflappable style was “confident that all the hard work behind the scenes will produce the high levels of service which our existing customers are used to. Not least, we are fortunate to have plenty of space in which to support the new ranges.”

Slip End Garage has been has been part of the community as a family business for many years. Founded by Geoff and Dennis’ parents, Albert And Nora, business was initially related to farm machinery sales and servicing and petrol sales. As needs changed, car sales were introduced: the late Albert Flitton would be proud of the way in which things have progressed to the point where the dealership is now one of the leading Citroen franchises in the south of England.

However, there is still a strong feeling of family and community these days: Geoff and Dennis grew up in Slip End, many of the staff are local people and they are supportive of quite a few local organisations. The numbers of Citroen cars which so many of us are driving around, bears testament not just local convenience, (*maybe the power of advertising is also demonstrated? (Steve Lyons, Parish News Advertising Executive)*) but also to an overriding air of community goodwill.

Parish News wishes Slip End Garage, staff and family, every success in their new enterprises!

*Jeremy Corkscrew
PN Motoring Correspondent*



TRAVELS TO AUSTRALIA PART 2

After a trip back on the ferry from Magnetic Island, we travelled onto our next destination, which was Airlie Beach. This is a very busy town near the Whitsunday Islands and full of back-packers. Its close location to the Great Barrier Reef makes it very popular with the young (and old) who flood there in their thousands every year. Allan and I decided to stay there for a few days whilst Amelia & Dave sailed on the Whitsunday's on a trimaran yacht. We were able to experience some more adventures whilst at Airlie, firstly to fly over the Barrier Reef in a bubble helicopter (with no doors). The views were amazing and quite surreal and the reef was endless. We even saw a turtle swimming and saw some of the many



islands that are situated in the reef. We visited the wildlife safari park run by Rob Bredl, the

expert, and listened intently to a very informative talk about snakes found in Australia and even got to hold one and a baby crocodile! We were able to walk around looking at the kaola's, kangaroos, emu's, dingo's, snakes, beautiful coloured birds and finally the massive crocodiles. Rob went into the pens and told us about the myths of crocodiles. He sat on top of one and fed them, but as he has lived with them all his life is very aware of their movements and can predict their next move. After collecting the 'sailors' we set out for our next long trip. This time it was on to Rockhampton (the beef capital) for the night, and then the following day we headed for Rainbow Beach where we hired a 4Wheel Drive for our trip to Fraser Island, the largest sand island in the world. Rain was falling quite heavily and the sky was overcast but we decided to continue and headed for the ferry on

the beach. Once onto Fraser Island we travelled along the sand for miles, stopping to see a turtle and then some dingo's. The journey was extremely rough as there were hardly any proper roads on the island but it was certainly an experience and one not to be forgotten in a hurry. The surroundings were unbelievable and the trees and wildlife incredible. With only a short 'window' on the beach to travel back in time for the last ferry, a few silent prayers were said as the tide had not gone out far enough for us to avoid the sea! Luckily we made it and were soon back on dry land and heading for Noosa Heads, along the sunshine beach with its un-patrolled surf and highly fashioned community. Certainly, a very different resort to Fraser Island. It was soon time to head for Brisbane, my penultimate town. We stopped for an interesting visit to the Australian Zoo which is run by Steve Irwin and his wife and marvelled at all the different animals, especially the friendly kangaroos, which you could feed and photograph. We watched the crocodile show and the bird display and saw many unusual animals there. It was then onto the 5star Stamford Plaza after finding a brilliant deal on the internet and we enjoyed two luxurious days there making the most of the many shops and arcades. After waving Dave and Allan off at Brisbane airport we spent the next few days exploring Brisbane and a chance for Amelia to meet up with one of her friends. We caught a flight bound for Sydney and headed for my final destination.

*Final
instalment
next month.*

Sue Cowell



Richard Gurney Contracting Services

Longview, Luton Road, Markyate

*Tree Surgeons & Fencing Specialists
Hedge Trimming & Tree-stump removal
Wood Chippings (good for mulching)
Logs for Sale*

☎ (01582) 840407
Established over 25 years - Fully Insured

SLIP END PETER EDWARDS HALL & PLAYING FIELD

*Ideal for children's & adult's parties, meetings, etc.
Kitchen facilities with catering service available
Available for various sports activities
Excellent sports changing facilities
Facilities for the Disabled*

For Bookings: ☎ (01582) 455185

PROBLEMS WITH YOUR PC OR APPLE-MAC?



For expert advice & trouble shooting
call Tony Glynos on 458353

tony.glynos@talk21.com

DOMESTIC APPLIANCE REPAIRS

*Washing Machines, Dishwashers,
Driers, Cookers, Microwaves,
Fridges & Storage Heaters.*

Barrie Acton

Slip End (01582) 728865
or Mobile 07802 723160



INKERMAN

BUILDING & ROOFING Co

EXTENSIONS - CONVERSIONS - RENOVATIONS

WWW.INKERMANBUILDING.CO.UK

Mark Short
46 Church Road
Slip End
Bedfordshire LU1 4BJ

☎ 01727 835702 (office)
☎ 07774 952555 (mobile)
01582 876509 (home tel/fax)
e-mail: info@inkermanbuilding.co.uk



freecycle Luton

The aim of The Freecycle Network™ is to reduce waste that goes into landfill by offering it to your local community for **free**.

Post your unwanted item on <http://uk.groups.yahoo.com/group/FreecycleLuton/> and an email is sent to all members who then make contact to arrange collection. Everything **must be free**, preferably local: although most things can be posted.

JOHN SAUNDERS & SON Incorporating E. Franklin & Co.

FUNERAL DIRECTORS

48 Duke Street, High Town, Luton



☎ 731696

Day & Night Service



Monumental Services - Members N.A.F.D.
Prepaid Funeral Plans available

Several local residents attend the "Learning Shop" in Dunstable, to hone their PC skills, be they beginners or those more familiar with computers. Parish News has no hesitation in recommending this great scheme.



Opened in May 2001, the Learning Shop situated in High Street South is run by Dunstable College. It is one of a growing number of community based I.T. training centres currently offering free computer training* for the local community, suiting all abilities from beginner to advanced. The centre provides opportunities for adults to learn or update their skills in computing by achieving a nationally recognised City and Guilds 7262 qualification.

The centre opens from 9am-9pm Monday to Thursday, 9am-5pm Friday and 9am-1pm Saturday. Students can decide when they wish to come in, as long as they attend for at least 4 hours each week. Sessions are pre-booked to ensure the availability of a computer.

This training is a break from conventional teaching methods. Students use learning materials specially produced for the course and tutors are available to assist. As a student you can choose to study from Internet, E-Mail, Desktop Publishing, Presentation Graphics, Word Processing, Spreadsheets and Databases.

Staff at the centre are currently training existing students to achieve their qualifications and are looking forward to welcoming new students to The Learning Shop, we look forward to meeting you! For more information drop in or call us on 01582 605076.

**A £36 certification fee will apply. Students must be resident in the EU for 3 years or more.*



The Vegetable Garden in September

Next year looms large already, and harvesting the results of this season's labours should be well underway and the vacant plots made ready for winter sweetening. Beet, carrots and potatoes can be lifted and stored, the carrots and beet on boxes of sand or under mounds of earth in the open: the potatoes in clamps. However, parsnips are better left in as the frost improves their flavour: they can be pulled when required in the kitchen. Cauliflowers should have a leaf bent over each head for protection and, if not done earlier, onion stems should be bent over close to the bulb.

Spring cabbage seedlings can be planted out: young cauliflowers can go into the cold frame in their pots over winter and those still outside dusted with soot (for those with coal fires.)

Flower and Fruit Garden

Cut back fruited raspberry canes to 1 foot above ground level and plant the new strawberry bed. In the flower garden pant out spring flowering bulbs. Transplant shrubs now, prune rambler roses of their old wood and tie up the new runners.

General Work

Keep the ground loose by hoeing or turnover the soil on the vacated ground. Watch out for insects and their eggs and burn rubbish as it accumulates.

Newly sown grass seed should germinate well during September, in time for the grass to get established before winter comes.

VATTERNRUNDAN

Each June in Sweden there is a 300km (180 mile) cycle run round Lake Vattern. More than 17,000 bikers take part. Unlike Tour de France, this is not a race, though a target time of 11 hours is set for more serious riders. All sorts get involved, from little old ladies on upright bikes with wicker baskets at the front, to others who train seriously throughout the year (metering pulse rates etc on exercise bikes) and who also spend many pounds trying to save the odd ounce on the weight of their equipment. Vatternrundan is a mixed-gender ride, however the ladies can indulge themselves in their own special event one week earlier in the Tjejevattern. At 90 km this is also very popular with around 8,000 participants.

Competitors start in groups of 60 at intervals of 2 minutes, and a favoured start time (first come first served) is around 3am when it is cool and

there is enough light to cycle without carrying lamps. The weather is a factor, and in 2004 there was continuous rain throughout!

Erstwhile Slip Ender, Paul Church, has taken part since 2002, accompanied by friends, some of whom fly in with their bikes from US for the occasion. His 'stats' have been:

| | Start Time | Finish Time | Hours |
|------|------------|-------------|-------|
| 2002 | 02.08 | 17.03 | 14.55 |
| 2003 | 03.36 | 15.16 | 11.40 |
| 2004 | 03.22 | 14.13 | 10.51 |
| 2005 | 03.24 | 13.37 | 10.13 |

Next year they have set a target of under 10 hours, and Paul should then collect a 'gong' for having taken part for five years.

Picture below shows Paul and friends following this year's run, looking remarkably fresh after over 10 hours in the saddle!



President: Lord Bill McKenzie

Director of Music: Ken Hone

There were more than a few tired bodies at the end of a hectic LMVC tour in North Norfolk during the last weekend of July. A rehearsal, two concerts and a church service in the space of less than 20 hours, not to mention the Commusical Eisteddfod on the Saturday night, meant that not much sleep was enjoyed! Our programme in Snettisham included “I believe”, “Do you hear the people sing”, “Unchained Melody” and we supported a solo by Peter Raven, “The Rose” and Tony Heaton, piano, with “Poloniase” and a Jazz selection.

On Sunday morning we attended the Snettisham Salvation Army hall, where the service was lead by Stewart Pattinson, who also played on the piano. We contributed the Lord’s Prayer and “Gwahoddiad” and Lord McKenzie read from 2nd Corinthians.

In the afternoon we made our way to St Mary’s Church in West Wynch for the final event. John Cropt contributed a most amusing dialogue on how the recipe for Yorkshire Pudding was delivered from Heaven by an angel. Tony Heatcote played solo on the piano, one item most appropriately was the theme music from the film “Piano”. Director Ken Hone added various witticisms during the concerts to add enjoyment for the large audiences.

The Eisteddfod went on well after “bedtime” as various groups and individuals sang and recited, the ladies formed an ad-hoc Luton Girls Choir and were given an ovation for their effort.



Never trust a woman who tells one her real age. A woman, who would tell one that, would tell anything. *Oscar Wilde*

If the Nobel Prize were awarded by a woman, it would go to the inventor of the dimmer switch. *Kathy Lette*

Middle age is when you’re sitting at home on Saturday night and the telephone rings and you hope it isn’t for you. Ogden Nash

In my day a juvenile delinquent was a kid who owed tuppence on an overdue library book. *Max Bygraves*

You’re getting old when you open the fridge door and can’t remember if you’re putting something in or taking something out. Lottie Robson

At the doctors last week, he told me to take all my clothes off. Then he said. ‘You’ll have to diet.’ I said, ‘What colour’ *Ken Dodd*

A couple of mackerel are at a film when a shrimp and lobster walk in with a massive carton of popcorn. One mackerel asks his friend, “If we ask nicely, do you think they’ll share that popcorn with us?” “Nah” his pal replies. “They’re two shellfish.”

Barbara couldn’t understand why she was losing so badly at Trivial Pursuit. Nevertheless, she persevered, rolling the dice and landing on Science & Nature. Her question was “If you are in a vacuum and someone calls your name, can you hear it?” Barbara frowned, then asked, “Is it on or off?”

A few thoughts from Francis Gay from a 1955 book I found in a charity shop!

Now Monday morning's something
you simply can't evade.
For every Sunday's followed
By Monday, I'm afraid.
Well, then, it's commonsense, folk,
To smile your care away,
And keep on smiling bravely
Until it's Saturday.
I've fifty things to do today,
Dear lord, I do entreat
That thou wilt keep me all the time,
Not only calm but sweet.
So may I bustle round the house
That when I go to bed,
I'll not feel sorry for one thing
I've neither done or said.



When we count our many blessings,
It isn't hard to see
That what we value most in life
are the treasures that are free.
For it's not the things that we possess
that signify our wealth,
But the blessings that are priceless
like our family, friends and health
by Ollive Beazley-Long

Log on to God; 'You have mail!'

Oh, Lord, I've dialled the internet -
am logged on to you?
Please program me to recognise what
I am meant to do.
Indeed you are a Holy God and I'm
on holy ground,
(My shoes un-fastened while I wait)
I feel you all around.
'My child, delete the old files, those
things to which you cling.
The memory's choked with clutter and
you haven't made me King.
All the old files now deleted, the
removal of you sin
You're ready now to reload, and
invite my spirit in.
Make Me the Lord of ALL your files;
just let me fill each part
And you'll begin to hear Me - for this
is the place to start.
Now, switch off all those programs,
which incessantly just run
They 'crash' the vital document where
work needs to be done.
I know your ways completely and
I'm here to guide you through.
To help you hear effectively, because
I'm close to you.
To reach your full potential, now you'll
have to open up
Let all the gifting be released, an
overflowing cup!
(by courtesy of Gillian Humphries, , Corfe Castle)



At last, we have the official release date of the Imperial Vipers first single Kick a Hole. The date is Monday 12th September for all rock fans out there. They have even made a personal appearance at the Luton Town Football Club on the first home match of the season against South-ampton. Score 3-2 to Luton. Lets hope the Vipers do as well.

Log onto the website www.imperialvipers.com to get a taster of the single.

Warm chicken salad with pine nuts- Serves 4

Preparation time: 15minutes

Cooking time: 15 to 20 minutes

- 2 tablespoons olive oil
- 3 boneless chicken breasts (skinned and cut into strips/chunks)
- 2 garlic cloves (optional)
- 4 tablespoons white wine
- ½ lemon or 2 teaspoons lemon juice
- 3 tablespoons toasted pine nuts
- 12 cherry tomatoes
- 1 large bag of salad leaves

Cook the pine nuts in non-stick pan until brown. Heat the oil and fry the (optional) garlic with the chicken until cooked and golden.

Add the lemon, wine and pine nuts to chicken and cook a further minute.

Put the salad and tomatoes into large serving bowl; add hot chicken and toss.

Sit back and enjoy this delicious salad, especially with the rest of the wine!!



*We had significant feedback recently from readers who now enjoy the junior sub-editor's specialty, **Orechiette con Broccoli**. So don't forget to let me have you favourite recipe's. I'm sure others will enjoy them too.*

Editor

(... now where's that recipe for Panacotta? (JSE))

The British Computer Society (BCS) has launched a new campaign to encourage people who feel intimidated by computers to get online and start experiencing the numerous benefits the internet offers, from booking late flights and accommodation to finding cheaper mortgages and home insurance.

The Society's 'Keep Up' campaign aims to tackle the burgeoning digital divide between those who can access the internet competently and those who simply do not know how and face being excluded from our internet dominated age. "Whilst nearly two-thirds of the population are using a computer at home or work, with 22% of those aged 65 or over accessing a home PC, there is still a significant minority of society who are failing to realise the benefits of the internet. Most of us can now enjoy easy access to a computer without necessarily owning one thanks to local libraries and colleges, internet cafes or mobile computer centres. The BCS Keep Up campaign will assist this sector of society that has been left out of the IT learning loop to date."

The BCS is giving away a free Keep Up fact sheet outlining ten ways to explore the internet safely with top tips on shopping online, banking and emailing. Please call the BCS on 0845 3004417 to obtain a free copy.

Further information can be found at www.ecitizen.co.uk or by calling 01793 417530.



(Also, see item on page 16.)

CAR TREASURE HUNT

Sunday, September 11th 2005 from 2pm, starting at St Andrew's Church
£6 per car, including driver and 2 passengers, additional passengers, £3 each
All proceeds to the Church Roof Repair Fund

Anyone wishing to take part or requiring further information, please contact:
Val Church at 2 Summer Street, Slip End Tel 01582 458443
or e-mail: valchurch@slipend.fsworld.co.uk or fill in the form below

Entry Form

Name of driver No of passengers

Address of driver

Telephone No e-mail address

Please return to Val Church, 2 Summer Street, Slip End, **as soon as possible**.

Your time of departure and any other relevant information will be sent to you in advance.

All monies will be collected immediately before departure.

ST ANDREW'S NEWS

Services & Events in September

Midweek Communion take place monthly at two venues in Slip End, details from Joy.

| | | |
|----------------------------|---------|---|
| Sunday 4 th | 10:30am | Family Communion with Baptism |
| Wednesday 7 th | 10-30am | Pram Service in the Family Room |
| Saturday 10 th | | Historic Churches Cycle Ride, St Andrews open all day |
| Sunday 11 th | 10:30am | Morning Praise |
| | 2.00 pm | Treasure Hunt.(Details from Val Church 458443) |
| Thursday 15 th | 8.00pm | Footsteps Meet in the Family Room |
| Friday 16 th | 2.30pm | Wedding—Stephen Woodward & Louise Ayre |
| Sunday 18 th | 10.30am | Holy Communion |
| | 6.15pm | 3:16 meet in the Family Room |
| Wednesday 21 st | 10.30am | Pram Service in the Family Room |
| Sunday 25 th | 10.30am | Harvest Festival |
| Monday 26 th | 9.30am | Packing and distributing Harvest Gifts |
| Friday 30 th | 2.30pm | Woodside home Harvest Festival |
| | 7.00pm | Harvest Supper Village Hall |



Wedding Bells

at

St Andrews!

The happy picture shows Andrea (nee Burton) & Robert Kempson following their wedding on July 30th..

Andrea looked beautiful on their happy day: weather stayed fine and the day was enjoyed by everyone. Andrea has lived in Slip End all her life and works in Dunstable, where she met Robert. On Sundays she teaches at the Sunday School and also helps out from time to time with bell-ringing at weddings at St A's. Jill Sanders says that she was half expecting Andrea to reach for the ropes on the way out of church after their wedding: Jill needn't have worried, as Andrea had her mind on other things!

**'Tis Harvest Suppertime
again at...**

St Andrew's Church



When? Friday 30th September

Where? Village Hall

**How Much? Lots o' food at ONLY £4.50 Adults,
£3.50 for concessions, or £10 for family (2 + 2)**

Tickets from David Kingston (416138) or from the Post Office

Bring your own K, F & S, cold drinks, etc.

We'll provide Tea, Coffee or Squash

.. And that's not all, there's ...

After Supper Entertainment!

The Caring Company

Carers who make a difference

For details ring: 01582 622125

Accredited by & working in partnership with
Hertfordshire Social Services
www.thecaringcompany.co.uk



ANDREW BROUGHTON



Registered Engineer
For your Heating & Boiler
Maintenance & Servicing
Call 07788 711163

SUGARING

**The Ancient Art of Hair Removal, the
natural way to feminine beauty.**

For details call Maggie
Slip End (01582) 420438

Chiropodist

State Registered

Home visits

Evening & weekend appointments

Keith Appleby BSc (Hons), MChS, SRCh

Telephone: 01582 873136

FUNTIMES

For Children's Parties & Fetes

Face Painting

Craft Parties

For further details please call

Alexa: 07767 868967 or

Sue: 07813 492904



**Need an
evening Babysitter?**

Call Philippa on
01582 452003

(Registered Childminder)

All proceeds to go to the Cystic Fibrosis Trust

cjr *Secretarial Services*

Word Processing • Reports • Letters • CV's
Audio Typing • Dissertations • Theses
Competitive Rates

Tel: 01582 876775 Fax: 01582 481169
colleen.reed@btconnect.com

Professional Soft Furnishings

Made from your own fabric

Curtains (any style heading) ♦ Valences

Roman Blinds ♦ Cushions ♦ Bedding

Loose covers for single chairs

Free measuring up & design ideas

Call Sandra on 01582 402829

e-Mail: sandmac6@hotmail.com

For local issues, drop in ...

County Councillor

Surgery

Heathfield School, Caddington
First Saturday of each month 10.30 to 12.30

Councillor Richard Stay

Ladies: Get Fit in 2005 at ...

DEBORAH'S AEROBICS

Wednesdays at 8.00p.m. Only £3

Peter Edwards Hall

For information call Deborah: 01582 767916

BINGO

Slip End Village Hall

Thursday evenings at Eight

Slip End & District Association

JESUS!

Feeling stressed? Need some healing?

*Try Jesus for emotional, physical
and mental well being!*

Contact: Joy Daniel, St Andrew's Church
(01582) 424363

Services 10.30 every Sunday morning

DIARY *If you would like your event put in the Diary please contact the Editor*

September

20th *Women's Institute: "Capital Manor", Mr M. Pitkeithly*

27th *Women's Institute: "Capital Manor", 50th Anniversary Dinner*

October

1st *Dance at the Village Hall*

3rd *Parish Council Meeting in the Village Hall at 8pm*

5th *Women's Institute: Trip to the Bank of England*

8th *Holistic Fair: Peter Edwards Hall 11.00am to 4.00pm*

18th *Women's Institute: "Ghost Stories", Mrs D. Wigg*

29th *Dance at the Village Hall*

November

7th *Parish Council Meeting in the Village Hall at 8pm*

12th *Table Top Sale - Village Hall*

19th *Dance at the Village Hall*

27th *Craft Fayre - Village Hall*

December

3rd *Dance at the Village Hall*

5th *Parish Council Meeting in the Village Hall at 8pm*

31st *Dance at the Village Hall*

NEVILLE

FUNERAL SERVICE

Serving the people of Luton & surrounding areas for 130 years

Independent and family owned

Floral and Memorial Service

Private Chapels of Rest

24 hour personal emergency service



01582 490005

Neville House

Marsh Road Leagrave, Luton, LU3 2RZ



U.E.S.

UTILITY ENGINEERING SERVICES LTD

Electrical Heating Plumbing

175 Woodside Road Tel/Fax: 01582 450800
E-Mail: admin@Utilityengserv.co.uk



LUTON RUGBY CLUB

Luton's leading Wedding, Conference & Function Venue

All sizes of occasions catered for with our newly refurbished Rose Marquee & Newlands Suites

- Conferences & Boardroom Meetings
- Weddings & Parties a speciality

We can accommodate up to 300!

Phone: 01582 720355

E-mail: info@lutonrugby.com
Newlands Road, close to Slip End

SLIP END PARISH NEWS THANKS ALL OUR ADVERTISERS FOR THEIR SUPPORT!

We feature many local business on our advertising pages, so please support them. Most are "just around the corner" so they can be responsive to the needs in our locality.

PILATES

Awareness of your own Body.

Pilates exercises are based on eight key principles: concentration, breathing, centering, control, flowing movement; isolation & routine. Pilates can improve posture, giving balance of strength & flexibility, a great way to relieve stress & tension.

We meet weekly in Slip End

For information call 01582 458886

Andrea Gregory

PILATES INSTITUTE
PROFESSIONAL INSTRUCTOR

SLIP END VILLAGE HALL

Your Village Hall
for Dances, Receptions & Parties
Facilities for the disabled

*For bookings contact
Gill Plummer ☎ 723109
9 Markyate Road, Slip End*

Charisma

Hair & Beauty Salon



43B Elm Avenue, Caddington
☎ (01582) 722801

Ladies & Gentlemen

*Air Conditioned ✿ Easy Parking
Chiroprody ✿ Indian Head Massage
Remedial Massage ✿ Reflexology*

Monday: 9am - 5.30pm

Thursday: 9am - 6.00pm

Tuesday: 9am - 5.00pm

Friday: 9 - 7.00

Wednesday: Closed

Saturday: 8am - 3.00pm

Safeclean

The furnishing care specialists from **GUARDSMAN**



Superb professional cleaning of Carpets, Upholstery, Curtains & Leather.
Also Oriental Rugs and Guardsman Anti-Stain Protection.

For a free, no obligation quotation call today

FREEPHONE 0800 144 0190

*Recommended by
leading furnishers
throughout the UK*

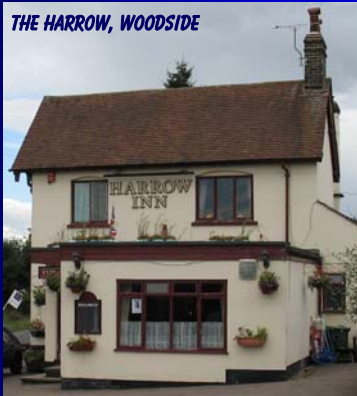
THE PLOUGH, UPPER WOODSIDE



THE RISING SUN, SLIP END



THE HARROW, WOODSIDE



SLIP END SOCIAL CLUB



**THE FROG & RHUBARB
SLIP END**



THE HALF MOON, PEPPERSTOCK

These days many small communities are losing their hostelrys but being close to Luton means that trade is brisk particularly at lunchtimes, when folk leave their working places for a meal at one of several pubs in Slip End, Woodside & Pepperstock. And of unique interest is the picture bottom left: Rob Sweatman seen walking past the F & R..

Slip End Garage Ltd.

Markyate Road

Slip End

ISUZU

 **CITROËN**

 **SUBARU**

AT YOUR SERVICE!

- ***New Cars***
- ***Used Car Sales***
- ***Repairs***
- ***Spares & Service***



(Our Service Centre is located in Grove Road, Slip End)

Service: (01582) 481600

Sales: (01582) 456888

Parts: (01582) 411421

www.slipend.subaru.co.uk www.slipend.isuzu.co.uk www.lutoncitroen.co.uk
sales.slipendgarages@imgroup.co.uk sales@slipendluton.citroen.co.uk