



**SLIP END      ALEY GREEN**  
**PARISH NEWS**  
**PEPPERSTOCK      WOODSIDE**

**MARCH 2011**





The attendees of Cakes and Company and the Lunch Bunch at Aley Green make use of their beautiful kitchen which was



This month's cover aims to remind us of our rural area, pretty in the



# The Parish @ Large

## SCHOOLS

Slip End Lower: 720152  
Caddington Village School: 726058  
Streetfield: 613421  
Ashton: 663511  
Manshead: 679400

## SPORT

Bowling Club: 412506  
Tennis: 733253  
Darts League: 425323  
Football: 418494  
Cricket: 414157

## HALLS

Village Hall: 723109  
Peter Edwards Hall: 767916

## COMMUNITY

Brownies: 723109  
Beavers: 0795 6833488  
Cubs: 414157  
Fly Tipping (CBC): 0300 300 8000  
Friendship Club: 452978  
Slip End Assoc: 414796  
Mother's Union: 738435  
Playgroup: 728865  
Toddler Group 405931  
Allotments: 736892  
FoSELS (PTA):  
Tracey Burgess 07767731187  
Women's Institute: 421034  
Police: 473462  
Aircraft noise: 395382  
Water leaks: 0845 7823333

## PARISH COUNCILLORS

Stephen Fuell: 417792  
stevefuell@f2s.com  
Philip Penman: 455185  
PhilipPenman@aol.com  
Ken Crossett 414168  
kencrossett@slipend.co.uk  
Janet Crawley: 07752 902070  
crawley\_janet@yahoo.co.uk  
Sarah Minnighan  
s.minnighan@btinternet.com  
Paul Cooper  
paul-cooper@indigo-tiger.com  
KeithHolme: 07969 154783  
holme@keithjan.fsnet.co.uk

## CLERK TO THE PARISH COUNCIL

Peter Segal: 526594  
(9am to noon weekdays)  
clerk@slipend.co.uk

CENTRAL BEDS COUNCIL: 0300 300 8000

## CENTRAL BEDS COUNCILLORS

Richard Stay: 0300 300 4230  
Richard.Stay@centralbeds.gov.uk  
Ruth Gammons 01582 738398  
ruth.gammons@centralbeds.gov.uk

## MEMBER OF PARLIAMENT

Gavin Shuker  
020 7219 500 or 07505 738666

## CHURCHES

### St Andrew's Church

Rev. Cathy Pullinger (from 7th March)  
Wardens: Tony Willson 482681  
Susan Wiltshire 727477

### Aley Green Methodist Church

Minister: Rev Philip Horner  
Senior Steward: Ann Meader 733668

## SHOPS & SERVICES

At the Crossroads, telephone 401069  
Monday to Friday 6.30 to 21.00 Saturday 7.00 to 21.00 - Sunday 7.30 to 21.00  
Garage: Slip End Garage, Markyate Road, telephone 456888

**Website: [slipend.co.uk](http://slipend.co.uk)**





# THE PLOUGH

## UPPER WOODSIDE

☎ 01582 720923

### TRADITIONAL FOOD

**Traditional Sunday Roasts**  
with fresh seasonal vegetables  
including vegetarian roast  
& children's roast.

**Family Pub, Dining Room & Garden  
Lunches & Evening Meals**

*Bookings advisable.*

*Our restaurant is generally closed on  
Sunday & Monday evenings, unless bookings are made.*

\*\*\*\*\*  
★ **Happy Hour Menu** ★  
★ Wednesday, Thursday, Friday from ★  
★ 5-7pm £2.50 Main Course ★  
\*\*\*\*\*

**Bar Snacks & Afternoon Teas**

**Surf 'n' Turf Evenings**

*Every Tuesday & Thursday 5pm - 9pm  
Choices of fish & 3 choices of steak.  
The Earlier you order the cheaper it is!!*

Now taking bookings for Mothers Day

**Curry Night**

*Every Wednesday evening 5 - 9pm  
6 choices of curries including vegetarian option  
for £5. The earlier you order the cheaper it is!! Plus rice,  
naan bread, onion bhaji, samosa.*

**Join our discount club!**

**Get 25% off the Bar & Restaurant  
Menu on joining, 15% thereafter.**

**Car parking, disabled facilities  
baby changing for males & females.  
We take bookings for large parties  
so food is prepared just for you.**

For other events and special occasions  
website [www.theploughwoodside.co.uk](http://www.theploughwoodside.co.uk)

**EXCITING NEW  
DEVELOPMENT  
LAUNCHED**

Visit us and register  
your interest

# RETIRE TO THE COUNTRYSIDE

## with McFarland Park & Leisure Homes

Discover how to make the most of your retirement  
by visiting our new development of luxury park homes  
at Brickhill Park in Pepperstock.

Park home living is an affordable and relaxing lifestyle  
and the perfect answer to a safe and secure retirement.

**Homes available for sale from £115,000.**



Brickhill Park, Half Moon Lane, Pepperstock, Beds. LU1 4LW.  
Telephone: 01582 723756 sales@mcfarlandparkhomes.co.uk  
[www.mcfarlandparkhomes.co.uk](http://www.mcfarlandparkhomes.co.uk)

**Brickhill Park - Downlands Park - The Vynes - The Thatches**

---

**ST. ANDREWS**

---

**Dates for March**

Wed 2 <sup>nd</sup>	10.30am	Little Stars
Sun 6 <sup>th</sup>	10.30am	Family Communion
Mon 7 <sup>th</sup>	7.30pm	Licensing of Cathy Pullinger our new Vicar
Wed 9 <sup>th</sup>	10.30am	Little Stars
Wed 9 <sup>th</sup>	7.30pm	Ash Wednesday Service
Sun 13 <sup>th</sup>	10.30am	Morning Praise
Wed 16 <sup>th</sup>	10.30am	Little Stars
Sun 20 <sup>th</sup>	10.30am	Holy Communion
Wed 23 <sup>rd</sup>	10.30am	Little Stars
Sun 27 <sup>th</sup>	10.30am	Morning Praise

---

**CAFE CHURCH ON THE SUBJECT OF  
'LOVE'**

---

It was another interesting morning at St Andrew's starting with a delicious cooked breakfast by Lorraine and her team (pictured on the inside back cover). The choice was sausages, bacon, beans, scrambled eggs and toast or all of them! Plenty of tea and coffee too and if you were still hungry after that you could still go for seconds. There was plenty to do once you sat down as on each table was a Couples Quiz based on the Bible, Love Quiz, a Word search and red hearts.

Julie Taylor, ably assisted by her sons Michael and Patrick gave us the answers to the quizzes and we then turned towards the World Map at the front of the church. We were able to show that our love extended to friends and family who lived all around the

world including Thailand where my son Scott is, Joan Duncombe's family in Germany and others in America, with the



help of Patrick (a genius on locating countries of the world). As a church we have helped other countries overseas including Haiti, Mozambique and Kyrgyzstan (where our shoeboxes went), and have various church contacts in Ethiopia, Burma and Philippines.



The children also made Valentine cards on the craft table. They decorated heart shaped biscuits and then we had a surprise visit from a very special guest. Elvis had flown in to entertain us and everyone joined in with singing 'Rockin all over the World'.

Well done to Mary, Julie, Lorraine and all the helpers on the day. When is the next Café Church?

*Sue Briggs*



**RACE NIGHT**

**FRIDAY 4<sup>TH</sup> MARCH AT 7.30**

**FOR 8.00 FIRST RACE**

**AT SLIP END SOCIAL CLUB**

**TICKETS £5 EACH INCLUDING  
SUPPER AND ONE FREE BET**



Please support this event and enjoy a good night out. We are raising funds to make the garden in the fenced area of the Village Hall an enjoyable place for the children to play

and learn. Tickets available from Playgroup or phone 01582 728865.

The Playgroup and Toddler Group are hoping to make the fenced area of the Village hall into a garden suitable for both the children to play in and for other users of the hall to enjoy. Plans are being drawn up with the help of a charity group called Groundwork who will be helping us with the design and the labour to transform what is quite a muddy patch at this time of year. We have ideas to have a patio, wild area and possibly some seating under the trees as a shaded place when the sun is shining.

As you can imagine all this will not come cheaply, so we are trying to raise funds with the Race Night at the Social Club, and more ideas to come. Luckily we have a good and active committee at the present which is working hard to make this happen. If you can support us in any way, by coming to the Race Night or with plants, equipment or a helping hand with our garden project, please contact us.

*Jill Acton*



The Licensing Service for Rev. Cathy Pullinger will take place at St Andrew's Church Woodside at 7:30 pm on Monday 7th March

**Residents and friends of the Parish  
are invited to join Cathy  
at her first service as our new  
Priest in Charge  
at St. Andrew's  
on Sunday 13th March  
at 10:30am**



The AGM is coming up this month on Monday March 14<sup>th</sup>,



8pm at the Village Hall, so it is time to look back over the past year. We have been busy with some important improvements which have been put in as well as the normal on-going maintenance. Inside the Hall, ladies' toilet has been smartened up and upgraded and outside the new fence, as well as being attractive, provides a safe area for the children's groups when they are playing outside. Jill Acton is looking at further possibilities to further enhance the look of the grounds with thoughts to improve the paved area, providing some flower beds and other ideas.

Mike Plummer, our Chairman (and Caretaker) is often beavering away with Gareth Fowler at all the maintenance chores inside and out. We are grateful to Lyn Knapton who looks after 'the books' having taken over the Treasurer's job last year.

Other members of the committee are Doris Horgan, Shirley Knapton, David Kingston and Steve Fuell (our Secretary) who support activities in many ways. Gill Plummer does a vital job, looking after Hall bookings.

If you wish to join this group and take some part in a this vital Village asset, come to the AGM and see what we are about.

*David Kingston*

*Here's a picture from our archives. Ladies' darts teams thrive in the Parish today, as they did in earlier times. Here Slip End Ladies (below, prettily untrousered) were successful having 'won the Cup'. Now some of those faces are familiar ...*



We are grateful for the support from our advertisers and trust that their ads have drawn some good local responses.

Advertising is a very important component of the Parish News and the PN A-dept has been expanded to a staff of two, Katrina Doubleday assisted by David Kingston. They are busy now preparing invoices for the next advertising period, April 2011 to March 2012, which will be sent out to advertisers this month. They would be grateful for prompt responses as chasing up even the (fortunately few) 'tardy' payers is time consuming for the team, who give their time voluntarily.

Local 'one off' events such as quiz nights, concerts etc. which are run in support of local groups are carried free on the loosely applied condition that items are fed back to PN after the events. This category of 'community advertising' has been extended recently to cover the advertisements for the two halls in the Parish in order to help their funds.

*If you wish to advertise in Parish News, please contact me; details appear on the diary page in this and forthcoming issues.*

*Katrina Doubleday*

---

**PARISH NEWS SUBSCRIPTIONS**

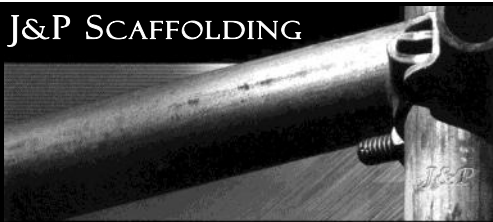
---

The annual subscriptions are due shortly and there will be no change to the amount this year. They will remain at £4 where delivered and £8 where posted. The subscriptions, along with the revenue from advertising, cover the costs of printing and distributing the magazine.

Please make sure that you remember to pay your distributor when they come round to collect the money.

Thank you.

**J&P SCAFFOLDING**



**Phil Johnson**

**Mobile: 07720 846963 Tel/Fax: 01582 429106**

**T. HUSSEY**

**TONY HUSSEY  
PLASTERING  
SERVICES**

**Mob: 07730 744174**

**E-Mail: TONYHUSSEY@AOL.COM**



**CONSTRUCTION LTD**

Contact Sheldon Stanbrook  
9 Prebendal Drive  
Slip End LU1 4JN

Tel: 01582 419 216  
Mob: 07786 230 297

E-Mail: srcs.construction@yahoo.co.uk

**JASON NEWARK  
HEATING & PLUMBING**  
*Bathrooms & Tiling - Power Flushing*  
*Free estimates - No job too small*

**Mobile: 07855 211412**  
**Evenings: 01582 601194**

**Chiropodist**

*State Registered*

*Home visits*

*Evening & weekend appointments*

*Keith Appleby BSc (Hons), MChS, SRCh*

**Telephone: 01582 873136**



**RLS AUTO SERVICES**

GENERAL REPAIRS, SERVICING,  
MOT & FAILURES, DIAGNOSTICS  
GEARBOXES & CLUTCHES,

**RUSSELL (DAVE) STANBROOK**

80 MANOR ROAD  
CADDINGTON  
LU1 4HQ

07976 584949

rlsautorepairs@hotmail.co.uk



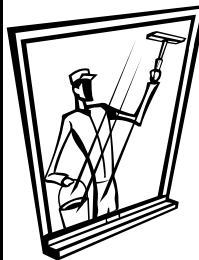
Pastel  
Painting Artist  
Portrait



Dogs a Speciality - Reasonable Rates

Contact: Bea Malsbury (Slip End)

Tel: 01582 488489



**Need a reliable  
Window & Carpet  
Cleaner?**

*We operate in the  
Slip End area,*

*so if you want us to quote for  
your windows, give us a call.*

01462 629302

07970 406 926

**Smart  
Houndz**

**The smartest houndz in town**

**Professional Dog Grooming**

All sizes and breeds welcome

Hand stripping, nail clipping  
scissoring & clipping

Contact

**Paul Wager (Caddington) 07875 409933**

City and Guilds Level 2 & 3 Qualified

www.smarthoundz.com

paulmwager@hotmail.com

**Home  
Renovations**

- Kitchens designed & fitted
- Doors hung internal & external
- Bedrooms & bathrooms

**All forms of property maintenance**

**CALL Martin Tommey**  
**01582 517105 or 07968 756180**





# U.E.S



Utility Engineering Services

## Power Failure?

All electrical works carried out include:  
24hr call-out, rewires, testing, extra sockets

**Contact Paul**  
175 Woodside Road  
Tel: 01582 450800

## Reptile Corner & General Pets Store

*(Under new ownership)*

*Food & Accessories for all Animals*

Dogs, Cats, Hamsters, Birds, Rabbits,  
Guinea Pigs, Horses, Snakes, Lizards,  
Fish & Chickens!

**Prebendal Farm - Grove Road - Slip End**  
**01582 725381**



## MANOR SERVICES (UK) LTD

### FOR YOUR ENTIRE HOUSEHOLD NEEDS & SERVICES

INCLUDING CLEANING, WASHING,  
IRONING & DECORATING.

We are a local, professional reliable service provider.

All services are insured and guaranteed.

Call 0845 116 2116 for a free quotation.

*Unit 7 Manor Road Garage, Manor Road, Caddington, Luton LU1 4ED*

Painting & Decorating  
**PETE the PAINTER**  
for all your decorating needs

- Laminated Flooring
- Carpentry Work undertaken
- Tiling - Floors & Walls
- Over 20 years experience

4 Elm Avenue Caddington

**Call for a free Quotation**

Tel: 01582 453611

Mobile: 07971 348485



## PILATES

*'Intelligent Exercise'*

A method of exercise  
and physical movement  
designed to stretch body.

**Group sessions at  
Slip End School**

*For information  
call Andrea on  
01582 458886*



**StotenGillam**  
Chartered accountants  
Chartered tax advisers

**PRACTICAL SOLUTIONS FOR  
GROWING BUSINESSES**

**01582 608601**

Alban House  
99 High Street South  
Dunstable LU6 3SF

www.stotengillam.co.uk  
enquiries@stotengillam.co.uk



ACCOUNTS  
TAXATION  
AUDITS  
FINANCIAL  
ADVICE  
PAYROLL  
COMPUTER SERVICES



## PEST CONTROL SERVICE KENSWORTH



All aspects of pest control  
insects, vermin, rodents, etc.

*For fast response call  
Alan McClelland on 01582 872158  
or Mobile 07774948415*

*Smaller, unmarked vehicles 7 days a week*

*Gardeners within the parish will be pleased to see we have a new addition to the Parish News – our very own gardening correspondent who will be bringing monthly do's and don'ts to you all.*

March, for me, is the start of the gardening year as midday temperatures can reach 50F but night time temperatures can plummet to below freezing, so beware. Make sure your mower blades are sharpened and that it is in good working order for the year ahead. Also check shears and secateurs are nice and sharp to avoid bruising and tearing the stems of plants.

Winter digging should be finished this month and a dressing of lime applied if the soil is acid (best tested with a kit purchased from a garden centre). Heathers can be planted from now until May. If you have over wintered any chrysanthemums then cuttings can be taken from the old stools and rested in pots or boxes in a mixture of two parts peat and one part sharp sand. Remove the bottom leaves from each cutting and trim to just below the leaf joint, insert the cutting approximately  $\frac{3}{4}$  of an inch deep. Take cuttings of dahlias, which have started to grow, by spraying tubers with tepid water to encourage new shoots. Gladioli can be planted towards the end of the month and into next month for a succession of blooms. As soon as conditions allow, sweet peas sown in the autumn and over-wintered can be planted out, allowing 8" between plants. In the rocky, firm in any plants that have been loosened by frost and remove any weeds that are starting to grow.



From the middle of March, if the soil is not too wet, early potatoes can go in. Plant early potatoes in trenches 12"

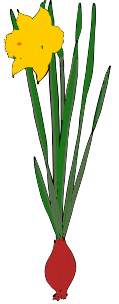


wide and 9" deep, space the tubers 12 -14" apart and draw the soil over them to form a ridge.

Parsnips can be sown this month if a dry spell is forecast, but if not leave until next month. Onion sets, shallots, salad onions, radish, leeks and Brussels seed can be sown outdoors to be transplanted in May and June. There is still time to plant blackcurrants, gooseberries, raspberries and strawberries this month. Raspberries will need to be pruned hard back after planting; strawberries planted now will not fruit this year.

Remember, gardening is an on-going pleasure and little and often is the key to success, trying to do it all in one go will result in failure.

On a cautionary note, a man was rushed into hospital after eating a daffodil bulb he mistook for garlic, but doctors say he will be out in the spring!



*Russell Sprout*

---

**POETRY - THE SPRING FLOWER**

---

I put the bulb in the ground  
Weeks and weeks ago  
Where it could hide  
From Winter's frost and snow.  
There it lies  
And shuts its eyes.



And when I had forgotten  
That I had put it there  
It reached its green leaves out  
To test the warmth of the air.  
The bulb sits up in bed  
And puts its hands above its head.

Round a purple flower  
Its green leaves opened wide  
As if it were opening hands  
To show a present inside.  
Up it stands  
And stretches out its hands.

*Stanley Cook*

**‘Turning your winter dreams into a summer reality’ with Joan Scanlon, Town Gardens, Danny Snapes, Head Gardener, Fenton House, Hampstead and Theo Chapman, Propagation, Wakehurst Place, W. Sussex.**

For six weeks Joan Scanlon, a landscape gardener with many years of experience of teaching, will be at the Walled Garden to help those new to the gardening world with the basic steps needed to make their garden or allotment flourish by the summer. There will also be extra sessions for more advanced gardeners, with special guest tutors Danny Snapes, Head Gardener at Fenton House, Hampstead, and Theo Chapman, Propagation at Kew's Wakehurst Place.

The sessions will be held on Fridays at the Luton Hoo Walled Garden from 10am - 1pm. Each session will commence with some theory before the participants are let loose to practise in the garden. Participants can either follow the whole course or simply book themselves on individual sessions.

11th March - Introduction to plant classification

18th March - Tame your garden: identifying and tackling weeds

25th March\* - Preparing the ground for planting: garden tools and soil cultivation.

1st April\* - Propagation

8th April - Designing and planting your garden

15th April - Growing vegetables

\* Denotes extra session for advanced gardeners. 25th March - Danny Snapes/1st April - Theo Chapman

£70 for 6 sessions, £40 for 3 sessions, £15 for 1 session. Numbers are limited so book early. For more information or to book your place on any of the sessions, reply to [office@lhwg.org.uk](mailto:office@lhwg.org.uk) or call 01582 816034.

Baron Leslie Griffiths of Burry Port, a life peer and Methodist Minister, will preach at Farley Hill Methodist Church's 50th anniversary service on Saturday September 22nd 2012. The arrangement was confirmed when Rev Julie Bradshaw, Ken Cameron and Tina Hayton met Baron Griffiths at the House of Lords at the end of January. The meeting was arranged through the good offices of Lord McKenzie who also entertained the party to lunch in the Peers Dining room. Baron Griffiths served the Methodist Church in Haiti throughout the 1970's and was ordained there. He had connections with the Methodist Industrial College in Chapel Street Luton and the Wesley Chapel. He is now Superintendent Minister at the Wesley Chapel in London.

A very popular former minister, the Rev. Mike Cassidy, now Superintendent Minister of the Bromley Circuit, will lead the service. Mike led the service at the 25th Anniversary when he was Minister at Farley Hill. A number of past ministers and pastors will be attending and it is hoped that Rev Geoffrey Fletcher the first ever minister at the church who is now retired will be able to travel from Dorset.

On Monday 11th April 2011 Farley Methodists and friends head to London for a grand tour of the Houses of Parliament kindly arranged by Luton South M.P. Gavin Shuker. The coach leaves at 7.45 and seats are available for non members please ring Ken Cameron. (07852474628 or [khubsurat1@xlnbb.co.uk](mailto:khubsurat1@xlnbb.co.uk)) Please be advised there is a lot of walking.

The February Lunch Club was the usual well attended jolly and the menu of fish pie made by Iris very much appreciated. Wednesday March 9th 12.30 for 1pm is the date of the next Lunch when ‘Bangers and Mash with veg’ will be served followed by rice pudding and jam. Usual price - £3.00.

*Ken Cameron*



The Mad March Table Top sale on 26th March has been CANCELLED - we may hold one later in the year.

At our February Meeting we all sang Jerusalem. Sallie read the Minutes from the previous month and Sue gave us dates of social activities, events and we all read through our WI Magazine. Our speaker was Mark Harries, a local man, who gave us an insight into Life in the Met. Mark is originally from West Wales and he became a PC in 1986. He has worked his way up to Sergeant and then Inspector. Several years were spent in the Camden Town and Kentish Town areas of London and he was kept very busy, as you can imagine, with the Inner City problems in those areas. He is now in Royalty Protection and told us a few 'funnies' attached to this post. The Queen, Duke of Edinburgh, Prince Charles and the Boys are all part of his work now in and around the Castles and Palaces which they frequent. We are pleased to say our membership is on the increase and quite a few visitors came to this Meeting.



A Craft Afternoon is held every Monday between 2.15pm — 4pm at the Baptist Church, C h a m p n e y s Room. We do all sorts of crafts

including knitting, card-making, all those buttons, hems etc. which need mending and anything else we want to do. Do come along and join us for a natter and the usual cup of tea and £1 to pay for the hall is all you need.



Our March meeting is on the 15th and we look forward to seeing you. This is Members Night where the Committee has the evening off and the Members take the Meeting. It will be fun.

We meet the 3rd Tuesday each month at 7.30 p.m. at the Caddington Baptist Church Hall - all welcome.

*Linda Bartlett*

---

**GARDENING CLUB**

---

Date for the diary:-

**Slip End Gardening Club**

Next meeting  
21st March 8pm Village Hall

Guest Speaker:-  
Ann Godfrey (Daisy Roots Nursery)  
**“Good in Bed”**

**NEW MEMBERS WELCOME**  
Guests/Visitors £2 each

The Village Plant Sale is to be held on Saturday 21 May. Hold on to purchase your perennials and bedding plants and produce them.





## **HELPING AT BROWNIES**

The Duke of Edinburgh Award is all about helping people and the community, getting fitter, developing skills, and going on expeditions. To achieve an award, you have to complete a personal programme of activities in four sections. For the Bronze Award, which we are currently doing, we have to complete Volunteer, Physical, Skill and Expedition sections.

As part of the Duke of Edinburgh Award, for the volunteering section of the bronze award we asked the leaders of Slip End Brownies if we could help out for three months. This involves helping the girls, aged between seven and ten, organising games and assisting with the activities. The Brownies, which include about twenty girls organised into three sixes, meet every Wednesday for an hour and a half. Each week we got to know the girls better and assisted with the weekly activities which included crafts, cooking, games and a Christmas party with a magic show.

# Brownies

About halfway through our time helping at Brownies, we were asked to organise a whole session, and we chose to have a Christmas theme and help the girls to make Christmas cards and ice biscuits. It was a great experience to have the opportunity to be a leader.

The purpose of the volunteer section of the bronze award is to gain leadership skills and help others whilst having fun and achieving. We thought Brownies would provide the perfect opportunity to do this, as we enjoy helping younger children to achieve and learn. Slip End Brownies is a great place to learn new skills and make new friends and they have all been very welcoming and we've thoroughly enjoyed the last three months,

which has sadly almost come to an end now. We had one more opportunity to organise a session ourselves, for Valentine's Day, which would be our last session. We now have the physical and skill part of the Duke of Edinburgh, along with the expedition to complete the Bronze Award, which usually takes approximately a year, and is being organised by Manshead School.

We want to say a big thank you to Phillippa and Verity for giving us this opportunity and



helping us along the way, and also a big thank you to the Brownies for being so welcoming and friendly.

*Juliet West (14) and Gabriella Szpala (15)*

*Juliet, Gabriella and the Brownies can be seen on the inside cover and above is a display of the cards made in the themed session organised by the girls.*

*Gabby and Juliet*



Juliet is hoping to study Journalism in the future so we look forward to other contributions from her in the months to come giving us a chance to hear some news from the young person's point of view.



Articles are also welcome from any other budding young journalists out there!



# SLIP END SOCIAL CLUB

New Street, Slip End  
☎ 415804

Live Sky Sports on the Big Screen - Pool - Darts - Crib - Dominoes  
Bingo Wednesdays; Saturday Night Entertainment every fortnight  
Golf Society

*Be social  
make it  
your local!*

Opening times:

**Weekdays: 4.00 to 11pm**  
**Saturdays: 12 noon to 12 midnight**  
**Sundays: 12 noon to 11pm**

*New members  
& their families  
welcome!*

*Usual Club prices!*

## THE FRAME SMITH

Beautiful Bespoke Picture Framing

- ◆ Water Colours
- ◆ Oils
- ◆ Tapestries & Cross Stitch stretched & framed
- ◆ Canvas stretching
- ◆ Prints & Photos
- ◆ Contract Work

Free local service in your own home with free collection & delivery or visit me by appointment at my workshop in Slip End.

Free Estimates & Advice.  
Call Anthony Smith,  
The Frame Smith  
Daytime: 07976 830906  
After 6pm: 01582 424516

## High Elms Tree Surgery Ltd

SHAUN MORRIS

Specialist in: ~

- FELLING
- LOPPING
- SHAPING
- STUMP REMOVAL
- HEDGES TRIMMED, SHAPED & REMOVED
- DEAD WOODING
- REDUCTIONS
- CROWN LIFTING
- WOOD CHIPPINGS
- LOGS DELIVERED
- TREE REPORTS
- TREE SURVEY INSPECTIONS
- T.P.O. & PLANNING APPLICATIONS

• 24 HOUR EMERGENCY SERVICE

- No Job too small • Free Estimates & Advice
- Fully Insured to £5 Million
- Approved by Local Authorities



Tel: 01582 840144 Mobile: 07939 623675  
[www.highelmstreesurgery.co.uk](http://www.highelmstreesurgery.co.uk)  
Old Beechwood, Cheverells Green, Markyate. AL3 8AB

---

## **CARBON FAST FOR LENT**

---

It is traditional at Lent for people, even if they are not regular church-goers, to think about giving something up as a form of fast. It might be chocolate or alcohol. This year at St Andrew's we are launching a carbon fast. What's that about? Well, the aim is to reduce our individual carbon footprint by choosing from a list of actions that will change our lifestyle during Lent. We are doing this because we want to better care for God's good earth and the people who live in it.

Often climate change seems like such a huge catastrophe that either we bury our heads in the sand or we feel helpless in the face of it. Lots of people taking small steps together can make a difference though. The good news is that many of the actions also save money.

At the time of writing we are putting together a list of 40 possible actions that people can choose. We'll be giving these out in church and letting people sign up to which ones they select. Here are a few to give you a flavour of how straightforward they are:

- \* Turn your heating down to 17°C
- \* Wash clothes at 30°C and don't use a tumble dryer
- \* Do a spring clean and then either sell unwanted things on EBay or give them to charity or friends who might make use of them
- \* Try to buy only seasonal food, and check out the food miles when shopping
- \* Reduce junk mail by signing up to the mail preference service
- \* Switch off at the wall; don't leave electrical appliances on stand-by

\* If you can't avoid using your car, change your driving habits to reduce petrol consumption, e.g. drive more smoothly, stick to the speed limit, check your tyre pressure

\* Use tap water instead of carbon intensive bottled water and fizzy drinks

\* Try a Meatless Monday or a Flesh free Friday. (Apparently, if everyone in the UK gave up meat once a week, it would save emissions equivalent to taking 5 million cars off the road!)

\* Try a candle-lit meal to cut down on electricity

We are not asking people to sign up to all the actions. We are not going to hold anyone to account. However, we would like to hear about success stories and we hope that during the course of Lent these actions will become habits that are carried on into the future.

If you're unable to join us at church, you may wish to look for more information on the carbon fast concept at:-  
[www.tearfund.org/carbonfast](http://www.tearfund.org/carbonfast).

You can also calculate your carbon footprint by using the link:-  
[www.energysavingtrust.org.uk/calculator/](http://www.energysavingtrust.org.uk/calculator/)

The Energy Saving Trust and Love Food Hate Waste also provide a wealth of great tips on reducing waste.

*Julie Taylor*



---

## **PARISH COUNCIL**

---

Representatives of Airparks were invited to the February meeting, to tell us of some improvement work they are considering to the reception area: and also of repair work which needs to be carried out to the road surfaces within the site. The work will take several weeks to complete and Airparks said they were keen to limit disruption to residents.

While the changes to the Reception areas will need planning consent, the repairs do not. Details of what they are thinking were presented to the meeting so that Councillors and residents who were present could comment. Airparks were particularly keen to hear views and preferences, about three different ways in which they could carry out the resurfacing work; as it will have some impact on those properties which back on to the site.

Around twenty residents were present at the meeting and chose the second option suggested by Airparks which would ensure no vehicle movements take place in the exclusion zone behind Claydown Way between 11 pm and 6 am. Everyone who attended, appreciated this means the work will take a little longer than if the first option had been favoured.

During the meeting Airparks agreed to consider relocating the area where cars are washed and vacuumed as some residents are inconvenienced by the noise from this operation. Airparks also confirmed that at present they have no plans to take over the land previously used by Coparts.

Recently we heard there are to be some changes to the bus service that will come into effect on 28 March. The 231 service (Centrebus, Grant Palmer, Red Rose): Dunstable, Caddington, Woodside, Slip End, Luton, has been withdrawn between Bushmead and Luton Town Centre. There will be a revised timetable between Dunstable and Luton, however details of the new timetable

have not yet been received. The 20:31 journey from Luton and 21:00 journey from Dunstable on Thursday, Friday and Saturday are to be withdrawn.

I was sorry to hear about the severe flooding in Mancroft Road, particularly the stretch just inside the parish boundary, between Aley Green Cemetery and Woodside Road last month. Since then, Steve Fuell and I met with Caddington Councillor Andy Palmer, Central Beds Councillor Ruth Gammons and representatives from Central Beds Highways and Drainage. During the meeting we walked down Mancroft Road to Aley Green discussing the ditches and underground pipes.

The following is an extract from an email which Steve and I received following that meeting: "With regard to the next step I believe a camera survey of the piped sections is necessary to determine if there are any obstructions which are causing the drainage system to back up and cause potential further damage to the carriageway. Mancroft Road has been put forward as a possible drainage scheme for the upcoming financial year and if successful we would undertake the camera survey in the first quarter. In the interim we will inspect on periods of rainfall to see how the system is working."

While the problem appears to originate from outside this Parish, Steve and I will continue to liaise with our colleagues in Caddington and Central Beds to let you know how things progress.

May this year is election time for the Parish Council; the official notices will be displayed later this month. Anyone wishing to stand for election may contact the Clerk, Peter Segal email [peters8@ntlworld.com](mailto:peters8@ntlworld.com) or by telephone 01582 526594 for further details.

In all walks of life it is very easy sometimes to forget to say thank you to people who have donated their time and given exceptional



service, I think this can be particularly true in the voluntary sector. So, how does a community say thank you to someone who has spent thirty years producing the Parish Magazine, for around half of that time was also one of the Church Wardens at St Andrews, is a Trustee of the local charity The Grace Cook Trust, sits on the Village Hall Committee, yet still found time to help people personally around the Parish and until he retired managed to fit in a day job which took him to all corners of the globe? That was the dilemma facing the Parish Council.

The solution – well, if the City of London can recognise such high achievement with the Freedom of the City, so can we by granting the Freedom of the Parish and that is exactly what happened. At the last meeting, David Kingston became the first person to receive the Freedom of the Parish.



It was with great appreciation and pleasure that on behalf of the community, Council presented David with his certificate.

The wording on the certificate is the same as appears on the City of London Certificate with only minor adaptations.

The Clerk has now set up a new register to record the names of those, who like David, have supported the community in a very significant way.

*Ken Crossett, Chairman*

**Mobile Library** Assuming the council confirms the Executive's plans, then the mobile library will stop either at the end of March or a few days later at the end of the financial year. (see later article) However, the service to the housebound will continue.

---

## **LAUGHTER**

---

### **“Curiosity killed the cat”**

A bright young man was walking down a road in his neighbourhood and, as he walked past a red building with a tall white fence around it, he heard a crowd of people chanting "Twelve, twelve, twelve" over and over again...Curiosity getting the best of him, he tried to look up over the fence to see what was going on but it was too tall. Then he spotted a hole in the wood. He put his eye to the hole. He had just managed to see a group of people sitting on garden chairs chanting, when a finger came out of nowhere and poked him in the eye! As he staggered backwards, the group began chanting, "Thirteen, thirteen, thirteen..."

*NB Anyone who has attended a Scout Campfire may recognise this as a variation on the Campfire stunt “Twenty-one”.*

# **BINGO**

*at the Village Hall  
Thursdays at Eight*

*Slip End & District Association*

*Body Image  
Fashion Jewellery at  
Woodside Animal Farm*

*Tel: 07715565958*

*Cara Kennedy CK-13@Live.co.uk*

*Home parties also*

**Frog & Rhubarb**

Elvis Rivers made his annual appearance at the Frog & Rhubarb at the end of January. A pub packed with customers enjoyed the night, dancing into the early hours. There were some more modern songs mixed in with the hits of Elvis, the King Of Rock & Roll.

The fundraising night in aid of Help For Heroes at the Frog was a massive success. Frankie Martin who sang the hits of Frank Sinatra, Dean Martin, Nat King Cole, Bobby Darin and many more provided the entertainment. The night was day 300 of Frankie's mammoth tour where he is performing 366 gigs in 366 days. Huge thanks to everyone that helped raise £2000 on the night. This takes the pubs total donations & fundraising total to an amazing £10,000.

Love was in the air on Valentines Day at the Frog & Rhubarb. Customers enjoyed a candle-lit dinner and every lady received a free gift of sweets, candles and a coffee mug.

**Forthcoming Events @ The Frog**

Love pancakes but don't want the hassle of making them? Then pop along to the Frog & Rhubarb on Tuesday 8 March. To celebrate Shrove Tuesday, the pub is giving Free pancakes to everyone ordering a main course meal.

On Saturday 26 March the Frog is holding a Wii Championship. At 3pm the children's competition starts with categories for under 10's and over 10's. There is a £15 Toys R Us voucher for the winner of each of the children's competitions. The adults who can win £40 in vouchers will follow this at 8pm. It is free to enter and you need no experience of video games to be able to play.

The Frog & Rhubarb charity quiz takes place on the last Wednesday of every month. The

next one is on 30 March. There is a mix of question, picture and more unusual rounds. First prize is £40 in vouchers and second prize is £20 in vouchers. Entry is a £1 per person donation to MacMillan Cancer Care and teams can be up to 5 people. Make sure you get here early as seats fill up quickly.

Mothers' Day is on Sunday 3 April and there is a free glass of Bucks Fizz for all Mums ordering a main course meal at the Frog. The pub is always fully booked on this day so make sure you book your table early to avoid disappointment.

Up to date information on events and offers can be found on the pubs website [www.frogandrhubarb.co.uk](http://www.frogandrhubarb.co.uk)

*The pictures below are from the Help For Heroes Night.*



## Rising Sun

As promised last month some more information on the Burns Night at the Rising Sun organised by Willie Brooks. The food and entertainment was well received by a good number of customers, all suitably dressed for the occasion and even several kilts! Well done Councillor Mr. Crossett!



Willie did a grand job of welcoming everyone and also telling us about The Immortal Memory of Robert Burns.



There were Recitals by Katrina Doubleday and Ken Crossett and a toast to the Lassies from Dave Ackrill which was suitably replied to by Kate Brooks.

Everyone joined in with all the verses of Auld Lang Syne - I never realised there were so many of them! A grand evening, well done to everyone who helped on the night.

*-and ther's a hand, my trusty friend, and gie's a hand o'thine; We'll tak' a right good willie-waught, for auld lang syne'.*

The 'Spice' evening in February went well with Spice of Caddington supplying the meal and Lily supplying dessert for a donation to the Lilly fund (the baby from Dunstable receiving treatment for cancer and hoping to go to America for special treatment). There will also be more fundraising during the month. They are hoping to have another Spice night on 9th April.

On the 5th March there will be a Battle of the Bands on X box fun night. On the 19th March there will be a special welcome in the afternoon at 3.30 p.m. for the new Priest in Charge of St Andrew's, Cathy Pullinger. Please let Lily know if you can attend and help to give a warm greeting to Cathy. If you cannot attend the tea everyone is welcome to Cathy's first service at the church on 13th March at 10.30a.m (see elsewhere in PN)

Don't forget the Royal Wedding Day on April 29th. After watching the wedding ceremony on the television in the pub there will be a champagne buffet. Proceeds to the playgroup but more details next month. See Lily for tickets for this special event.

The St George's Supper on 30th April will consist of a five course meal with speeches and poems during the evening. Once again, similar to the Burns Supper it will be formal dress so another chance for you to dress up for the evening. Cost will be £25 and tickets will be available from the pub.

If you enjoy a Day at the Races why not join the Rising Sun for a day at Ascot on June 18th Cost is £55 which includes full breakfast, luxury coach, a Silver Ring ticket at the race course and a full buffet dinner on your return.

Ask at the pub for more details for the Ascot day out.

*Sue Briggs*



## The Plough

Valentines Night at The Plough went down great!! Our couples had a 3 course meal set in candlelit and the atmosphere was very romantic.



Our Barmaid Jodie, was featured in the Herald and Post Newspaper as a model for Barnfield College and had her hair styled by one of the trainee hair-dressers.

We are now taking bookings for Mother's Day Sunday 3rd April, 2 Course Meal £12.95 or 3 Course Meal £15.95.

### **Book Now To Avoid Disappointment.**

Check out our new website at [www.theploughwoodside.co.uk](http://www.theploughwoodside.co.uk)

## PARISH PLAN

After two years of hard work the Parish Plan is nearing completion and will hopefully be published in the next 2/3 months. A draft copy is being passed to the Parish Council for them to discuss and approve at their March meeting and the Parish Plan Steering Group can then get the final document printed and published. A leaflet will be delivered to every household giving a snapshot of the proposed Plan and the full details will be made available to anyone who wishes to read the whole article.

### **A THOUGHT FOR THE DAY!**

#### **Gift of Friendship**

When you ask God for a gift,  
Be thankful if He sends  
Not diamonds,  
Pearls, and riches -  
But the love of  
Real true friends.

*Helen Steiner Rice*

**Frog &  
Rhubarb**  
country pub & dining

**01582  
452722**

**8 March - Shrove Tuesday  
Free Pancakes**

**26 March  
Wii Championship**

**30 March  
Charity Quiz 8.30pm**

**3 April - Mothers Day  
Free Bucks Fizz For Mum**

**Check Out Events & Offers At  
[www.frogandrhubarb.co.uk](http://www.frogandrhubarb.co.uk)**

**Wii™  
CHAMPIONSHIP**

**Saturday  
26th March**

**3pm - Children  
Under 10's & Over 10's  
£15 Toys R Us Voucher  
For Winners**

**8pm - Adults  
£40 Voucher For Winner**





*Slip End Tennis  
Club*



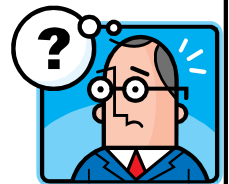
# QUIZ NIGHT

**SATURDAY 12th MARCH**  
**(Doors open 7.00pm – 7.30pm start)**

**Peter Edwards Hall  
at Slip End Playing Field**

*Teams Maximum of 8 People  
Fish or Chicken & Chips Supper  
all for just £7 per person  
Bring your own Knives, Forks, Drinks & Glasses*

***For tickets contact  
Steve on 414162***



## ALEY GREEN CHURCH RAGS WALK

Alison and I took part in the RAGS walk in January. Having enjoyed the walk and the company, we decided to go on the February one on Saturday 19th. Walk organiser, Yvonne, had previously warned that the walk would be muddy.

The night before the walk we had 7mm of rainfall and it was still raining when the fourteen of us set off from The Plough in Wingfield.



Within minutes of leaving the pub car park, our boots had doubled in size and weight with sticky Bedfordshire mud, still extracting a soggy boot from the mud to be able to move forward does help to tone up the muscles. The three mile walk took us out to Chalgrave Church and then round the perimeter of the Chalgrave Golf Club before heading back. It was enjoyable despite the constant rain and once clear of the muddy fields, progress along the footpaths was good allowing us to arrive back at the pub ahead of schedule.

We were joined at the pub by six other friends bring the outing up to twenty. Once again a big thank you to Yvonne and Alan for sorting out all the details.

*Mervyn (Bear in the rucksack) Wilson*



DUNSTABLE DOWNS GOLF CLUB  
  
FOUNDED 1906

18 hole, 100+ year old, James Braid designed,  
'downland' style course in an area of outstanding natural beauty

## Memberships now available

Interested in becoming a member?

There are a range of new and attractive packages that offer real value.  
They will not last forever so call us now to discuss

[www.dunstabledownsgolf.co.uk](http://www.dunstabledownsgolf.co.uk) • Tel: 01582 604472

## **ALEY GREEN METHODIST CHURCH**

### **Services and Diary dates for March**

#### **Sunday 6th**

11.00am Morning Service - Rev Bob Forrest  
(Communion)

11.00am Sunday School

#### **Tuesday 8th**

10.00am/12.00 'Pancakes & Company'  
Coffee Morning

#### **Sunday 13th**

11.00am Morning Service - Rev P Horner

11.00am Sunday School

#### **Monday 14th**

7.30pm Lent meeting led by Mike Bull

#### **Sunday 20th**

11.00am Morning Service - Mr Colin Quine

11.00am Sunday School

#### **Monday 21st**

7.30pm Lent Meeting led by Mike Bull

#### **Wednesday 23rd**

7.30pm Coffee Evening

#### **Sunday 27th**

#### **British Summer Time begins**

11.00am Morning Service - Mr Bob Squires

11.00am Sunday School

#### **Monday 28th**

7.30pm Lent Meeting led by Mike Bull

### **April**

#### **Friday 1st**

5.30pm - 8pm Flower Festival

#### **Saturday 2nd**

10.30am - 5.00pm Flower Festival

12.00 - 2.00pm Light Lunches

#### **Sunday 3rd**

No Morning Service

2.00pm - 4.15pm Flower Festival

4.30pm Evening Service - Rev Bob Forrest

Thank you to everyone who has left jam jars and donations of sugar on my doorstep. The preserve team have been very busy filling the jars with jams and chutneys ready for our Coffee Mornings/ Evenings and our Flower Festival in April. A basket of preserves will make a lovely gift for Mothering Sunday or Easter - we are happy to make them up as required.

The Lunch Bunch meal in January was held at the Church & we had a visit from Julie Beales who is a fundraiser for Macmillan Cancer Care. She gave a most interesting talk about the work of Macmillan and showed two films on the various aspects of their support. After all our questions were answered we tucked into a Sausage & Mash lunch followed by dessert. A collection was taken and £152.00 raised for the charity.

Our Chinese New Year Meal was well supported and turned out very well. There was a choice of four meat dishes together with veggie option plus the usual rice, stir fry vegetable & noodles. £210.00 was raised for Action for Children. The January Coffee Evening raised £70.00 also for Action for Children.

Our Lent fellowship meetings begin on Monday 14th March & run for five weeks and are open to all. We always have members from other denominations and its good to study, talk, pray and reflect together as we travel towards Easter.

Our bi-annual Flower Festival, entitled A Year in the Life of Aley Green Church will be held from Friday 1st April until Sunday 3rd April, Mothering Sunday. As usual there will be arrangements for sale so put your name down if you see one you would like.

We hope to see you soon God bless from all at Aley Green Methodist Church.  
Yours in Christ

*Ann Meader*

## **SLIP END GRIPPED BY ZUMBA FEVER!!!!**

Zumba dance-fitness classes started in Slip End at the beginning of January and have proved hugely popular with our local residents. Zumba is a Latin-dance inspired fitness class which is tailored for all ages and abilities, easy to follow, no need to book the class, just turn up and enjoy yourselves!

Karen Duncan is the instructor and is thrilled with the popularity of the classes and the enthusiasm of all the participants. "I heard about Zumba last year and started going to a few classes in the Herts and Beds area but there was nothing close to where I lived. I loved participating in classes and have taught various fitness classes over the years and am a qualified fitness instructor so thought, I can give that a go and bring Zumba to my village! So, I booked myself onto a course and then arranged to start classes in the school hall at Slip End Lower School. The school put the word around which was brilliant and then I added some posters and flyers, and of course the article in the Parish

News, and word soon got around. On that first Monday night in January we had 68 ladies turn up and it was fantastic. Everyone looked brilliant and seemed to enjoy themselves. I have had some lovely, positive feedback from my participants and I'm loving it!" Classes run every Monday and Thursday evening 7.30pm-8.30pm (throughout the year, not just term time). Cost is £4 and is suitable for all, so why not get a couple of friends together and give it a try. Its great fun (just ask the ladies of Slip End!), steps are choreographed so you can pick them up easily, to music you enjoy, plus it will improve your fitness and burn calories. If you want some more information please call Karen with any questions on 07989 380040 or email: [iainduncan88@btinternet.com](mailto:iainduncan88@btinternet.com)

*Just some of the Thursday crowd pictured below with Karen in front. It's brilliant fun and a chance to meet up with friends and to get fit. Real mix of ages—but one thing you should not forget is a big bottle of water!!*

*Sue Briggs*



## **Richard Gurney & Son Contracting Services**

**Longview, Luton Road, Markyate**

*Tree Surgeons & Fencing Specialists  
Hedge Trimming & Tree-stump removal  
Wood Chippings (good for mulching)  
Logs for Sale*

© (01582) 840407

*Established 1970 - Fully Insured*

Reflexology is a complementary therapy, which works on the feet to aid healing to the whole person not just the prevailing symptoms. Reflexology may aid:

*Stress-related conditions • Back Pain • Migraine  
Fertility • Sleep disorders • Hormonal Imbalances*

Reflexology helps us to cope on physical, mental and emotional levels, encouraging healing and maintaining health in all areas of our lives.

[www.Starlighttherapy.weebly.com](http://www.Starlighttherapy.weebly.com)

Call Lyn on 01582457815 or 07926367810



## **PROBLEMS WITH YOUR PC OR APPLE-MAC?**



*For expert advice & trouble shooting  
call Tony Glynos on 458353  
[tony.glynos@talk21.com](mailto:tony.glynos@talk21.com)*

## **DOMESTIC APPLIANCE REPAIRS**

*Washing Machines, Dishwashers,  
Driers, Cookers, Microwaves,  
Fridges & Storage Heaters.*

**Barrie Acton**

**Slip End (01582) 728865  
or Mobile 07802 723160**

# **INKERMAN**

## **BUILDING & ROOFING Co**

**EXTENSIONS - CONVERSIONS- RENOVATIONS**  
[www.inkermanbuilding.co.uk](http://www.inkermanbuilding.co.uk)

**The Complete Design,  
Plan-compilation Service included**

- ✓ New Build    ✓ Restoration
- ✓ Electrical Work & Plumbing
- ✓ All General Building Work
- ✓ Flat & Pitched Roofing
- ✓ Brickwork Contractors
- ✓ Painting & Decorating
- ✓ Insurance Work



☎ **01727 835702 (office)**

☎ **07774 955255 (mobile)**

**01582 876509 (home tel/fax)**

## **CLEANWORLD**

### **Coin Operated Launderette**

*Service Washes Dry Cleaning Agents*

Open for Washing/Drying & Dry Cleaning reception  
Mon-Fri 9am-8pm, Sat-Sun 9am-7pm

Extra Large washing machine for King Size Duvets  
and all those bulky items.

Service Washes available,  
ask assistant for details.



18 Market Square, Whipperley  
Ring, Luton. Tel 01582 458102

## **JOHN SAUNDERS & SON**

## **FUNERAL DIRECTORS**

48 Duke Street, High Town, Luton



☎ 731696

Day & Night Service

*Monumental Services  
Members N.A.F.D.  
Prepaid Funeral Plans available*





---

## **MOBILE LIBRARY AT SLIP END**

---

I went along to the mobile library on the 19th February to talk to the librarian about the threatened closure of our mobile library. Mary Leigh, (below) explained that the full



council would be meeting later this month to discuss the possibility of ending the mobile library run to all the villages in Central Bedfordshire. Unfortunately, it seems likely that the cut will go ahead.

All members of the travelling library will be written to, informing them of the cuts if and



when the inevitable happens, and it is expected that the last visit to Slip End will be on the 2nd April. Books can be taken out until that date but will then have to be returned to either Dunstable or Luton Library. The librarians are employed by Biggleswade Library and even though they will still be employed by them they will lose the hours that they worked on the mobile

libraries, so difficult for the travelling staff also. We will report further next month on the final result, but feel free to contact your local Councillor if you disagree with the situation mentioned above.

In the picture opposite, villager Sally chooses her books, but for how long?

*Sue Briggs*

---

## **LOVE TO READ?**

---

On the subject of libraries and books, it would be interesting to find out more about peoples' taste in books.

Unfortunately in this age of technology there are many of us who rarely pick up a book. The television tends to be the modern method used for "unwinding" at the end of a long day. I for one find that the television doesn't work for me. I would much prefer to settle on the sofa with a good book. The genre for me is not a major issue, I'll try anything once. However I select different books for different moods, a little like the choice of music that forms the background to the reading. I am currently favouring books by James Rollins and Andy McDermott, these being adventure stories with a touch of archaeology and action, interspersed with historical novels or even a little romance.

To introduce a little technology to the mix we are currently experimenting with the idea of the e-book reader. Will it take off? Maybe it feels better to hold the actual book in the hand. Watch out for a future report....

In the mean time it would be interesting to see what others choose to read and whether anyone fancies submitting a comment on their favourite to fit into an odd space in the magazine occasionally.

*Alison Wilson*



## **A GRAND DAY OUT!**

No it's nothing to do with Wallace and Gromit, cheese or a trip to the moon! As I write, it is half term and a recent post, spotted on 'Facebook' asked for ideas about what to do with the family during the week. Hence I thought readers may like some ideas, not just for children but for all ages, since we have Easter and several bank holidays approaching.

So what do we have nearby? Where can we go that doesn't cost too much money?

Firstly there is the countryside. There are many places that are good for walks. We all have our favourites. Mine include Dunstable Downs, Ivinghoe Beacon, Ashridge (especially at bluebell time), Sharpenhoe Clappers and places further afield such as Wendover and Coombe Hill. I also enjoy visits to National Trust and English Heritage sites—free if you are a member with plenty to interest us all, both indoors and out. There are plenty of suggested walks available on the internet and in books and many of these start or finish at country pubs where you can eat and refresh yourself after your efforts.

We are lucky that there are several museums to be found locally some of which are also free. Wardown Park Museum in Luton has some interesting displays and also special events. Stockwood Discovery Centre is within walking distance of the villages. As well as its regular displays and gardens that

change with the seasons, it also runs special events. You can “decorate cup cakes for Mum” on Mothering Sunday and there is a Country Fayre on Easter Sunday and Monday with country crafts, stalls and activities.

Even nearer to us is Woodside Farm where children will enjoy the animals, birds, fairground rides and activities they have there.

I also enjoy an occasional visit to St Albans to see the Abbey, the park and the Roman Museum. Another favourite place for me is Whipsnade Zoo—great for a longer day out, though rather more expensive.

I enjoy trips that take me longer distances too including a recent day out to the “Tropical Extravaganza”, a special display of Orchids at Kew Gardens, a good place to visit if you are keen on unusual or exotic plants.



I'm sure there are many more ideas that I've missed. Please write and tell us about your favourite ideas to keep the family entertained.

*Alison Wilson*

### **SLIP END PETER EDWARDS HALL & PLAYING FIELD**

*Ideal for children's & adult's parties, meetings, etc.  
Kitchen facilities with catering service available  
Available for various sports activities  
Excellent sports changing facilities  
Facilities for the Disabled  
For Bookings: ☎ (01582) 767916  
or 07956 463128 (not after 9pm)*

*To keep track of latest local  
issues, events, etc., visit .....*

***www.slipend.co.uk***

*Our website contains lots of information  
covering all activities and groups in the  
Parish. Web mistress Sarah Minnighan &  
Webmaster Peter King have been  
working hard to update information  
and improve presentation.*

# The Rising Sun

*The Community Hub*



**Value Home Cooked Food from only £4.50!!**

*Please note extended opening hours for meals at the weekend*

**Weekdays:** Lunches 12 noon - 2.30pm

Dinners 6 - 9pm

**Saturdays:** 12 noon to 7pm

**Sundays:** Lunches 12.30 - 7pm

**Malaysian Food Platter:** @ £5 available Monday from 6 to 9pm

**Specials boards of Steak and Seafood**

**Sunday Special:** 2 course Sunday Roast, £8.00 per person  
with a choice of roasts plus free dessert!

**Real Ale - Real Food - Real People**

**Rising Sun Pub, 1 Front Street, Slip End**

**☎01582 482354**



***RELAX!***

***We have a man that can...***

**Collections, deliveries, removals,  
furniture repair & restoration, flat  
packs, gardening and all manner  
of jobs work undertaken.**

For further information

**CALL Paul Goodaker on 07979057393**

**Can't find the time  
to do all those jobs  
around your home  
and garden?**



# SLIP END VILLAGE HALL

*Your Village Hall*

for Dances, Receptions & Parties  
Facilities for the disabled

*For bookings contact  
Gill Plummer 723109  
9 Markyate Road, Slip End*

*Central Beds  
Councillor's Surgery  
Heathfield School Caddington*



Meet Richard Stay and Ruth Gammons to discuss local matters which are of your concern or interest.

*First Saturday of each month,  
10am to 12 noon*



**Reduce waste that goes into landfill  
by offering it to your local community for free!**

Post your unwanted items on  
<http://uk.groups.yahoo.com/group/FreecycleLuton/>  
and an email is sent to all members  
who then make contact to arrange collection.

Everything *must be free*,  
preferably local, although some things can be posted.

## *MP's Contact details*

*Gavin Shuker's local office is  
located at:  
3 Union Street,  
Luton LU1 3AN*

Email: [gavin@gavinshuker.org](mailto:gavin@gavinshuker.org)  
Website: [www.gavinshuker.org](http://www.gavinshuker.org)



*For advice surgery appointments  
call 01582 457 774*

# NEVILLE FUNERAL SERVICE

*Serving the people of Luton & surrounding areas for 130 years*

*Independent and family owned*

Floral and Memorial Service  
Private Chapels of Rest  
24 hour personal emergency service

 01582 490005

*Neville House  
Marsh Road Leagrave, Luton, LU3 2RZ*

# DIARY - *If you would like your events included, please contact the Editor*

## **March**

- 4th *Video Race Night (in aid of Playgroup & Toddler group) Social Club*  
5th *Rising Sun-Battle of the Bands—Xbox fun night*  
7th *St Andrew's- Installation of Cathy Pullinger 7:30*  
*Community Projects Group meets at Slip End Social Club 7.30. All welcome!*  
8th *Frog & Rhubarb-Shrove Tuesday—free pancakes*  
12th *Quiz Night (Tennis Club) Peter Edward's Hall 7:00 for 7:30*  
13th *St Andrew's—Cathy's first service*  
14th *Village Hall AGM— 8.00pm*  
26th *Frog & Rhubarb-Wii Championship*  
*St Andrew's AGM after service*  
27th *2011 Census Day*  
30th *Frog & Rhubarb-Charity Quiz*

## **April**

- 1st-3rd *Aley Green Methodist Church - Flower Festival*  
2nd *Meet Central Beds Councillors: Heathfield School Caddington, 10am to noon*  
3rd *Mothering Sunday - All pubs have lunches for this day*  
12th *Community Projects Group meets at the Rising Sun 7.30. All welcome!*  
24th/25th *Stockwood Discovery Centre—Stockwood Country Fayre*  
29th *Rising Sun-Royal Wedding—Champagne buffet and fun day*  
30th *Rising Sun- St George's Day meal*

## **May**

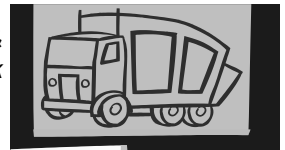
- 7th *Meet Central Beds Councillors: Heathfield School Caddington, 10am to noon*  
10th *Community Projects Group meets at the Plough 7.30. All welcome!*

### **Wheellie Bins: see below**

**Black Bins & glass:** Put out on Friday 4th & 18th March & 1st April.

**Green and Orange Bins:** Put out on Friday 11th & 25th March.

**Mobile Library:** The Library will visit the Parish on Thursdays 10th & 24th March Woodside (Mobile Homes) 14:25 - 14:40, Pepperstock (Brickhill) 14:45 - 15:10, Crawley Close 15:15 - 15:40, Slip End Lower School Rossway 15:45 - 16:10.  
In addition the Library will call at the Village Hall on Saturday March 5th & 19th. 14:20 - 14:40.



### **Items for the next issue to us by 15th March**

Want Parish News delivered monthly? Contact Alan Buttery at 1 Claydown Way (01582 724527), alanjan@buttery400.fsnet.co.uk. Anything interesting to report about village activities, photos, holidays, etc? Please contact us, letters and e-mails are encouraged.

Views expressed by our contributors are not the Editor's own. Articles should be sent by the 15th of the preceding month to Sue Briggs, 4 The Oaks, Slip End or Alison Wilson 23 Claydown Way, Slip End or e-Mail parishnews@slipend.co.uk

Advertising queries to Katrina Doubleday 07753 168443 or email hatsbydoo@btinternet.com

Parish News is grateful to our advertisers for their contributions. Please support them.



Right— Katrina doing the “Recital” at Burns Night,  
Below—Slip End Brownies with helpers, Gabby & Juliet  
St. Andrew’s Café Church, this time on the theme



Some of the Parish Councillors,  
together with David  
Kingston, following the  
presentation awarding him  
“Freedom of the Parish”.  
We hope he uses it well!



# *Slip End Garage Ltd.*

*Markyate Road*

*Slip End*

**AT YOUR SERVICE!!**



ISO 9001 (2000 revision)  
Certificate Number 424



- *New Cars*



- *Used Car Sales*



- *Repairs*

- *Spares & Ser-*

*Our Service Centre is located in  
Grove Road, Slip End*

**Service: (01582) 481600**

**Sales: (01582) 456888**

**Parts: (01582) 411421**