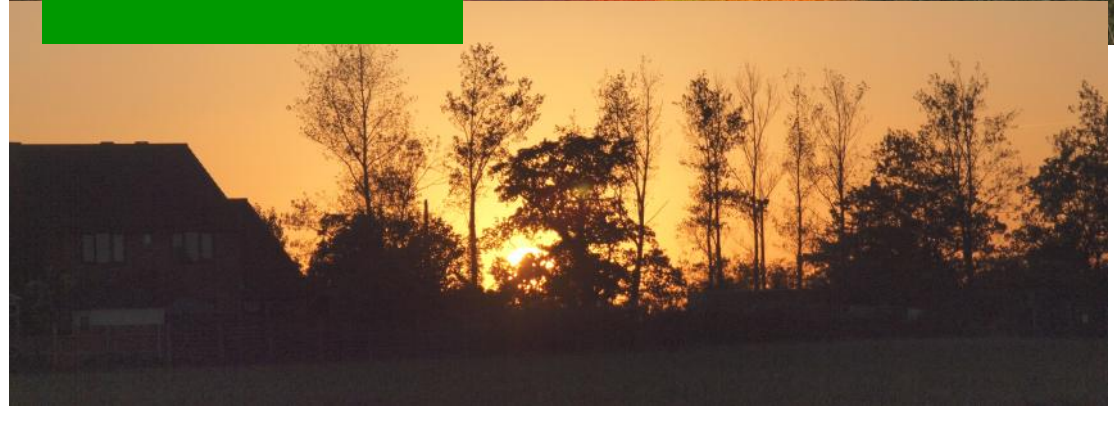


***SLIP END ALEY GREEN  
PARISH NEWS  
PEPPERSTOCK WOODSIDE  
NOVEMBER 2011***



Harvest time again  
Rev Cathy Pullinger chats with  
some of the ladies at the Harvest  
Supper

Dot Reid with Hilda and May King  
after a very entertaining evening.

Cheeky Jack, Lucy, Henry, Danielle  
and Evie from St. Andrew's with  
some of the harvest goods

Sam lends a hand with the Harvest  
sorting and distributing on the  
Monday after Harvest Festival.



# The Parish @ Large

## SCHOOLS

Slip End Lower: 720152  
Caddington Village School: 726058  
Streetfield: 613421  
Ashton: 663511  
Manshead: 679400

## SPORT

Bowling Club: 412506  
Tennis: 733253  
Darts League: 425323  
Football: 418494

## HALLS

Village Hall: 723109  
Peter Edwards Hall: 767916

## COMMUNITY

Brownies: 723109  
Beavers: 07956 833488  
Cubs: 07972 916626  
Scouts: 07780 676861  
Fly Tipping (CBC): 0300 300 8000  
Friendship Club: 452978  
Slip End Assoc: 414796  
Mother's Union: 738435  
Playgroup: 728865  
Toddler Group 405931  
Allotments: 736892  
FoSELS (PTA):  
07787 401937  
Women's Institute: 737036  
Police: 473211 or 101  
Aircraft noise: 395382  
Airparks: 01582 749495  
Water leaks: 0845 7823333

## PARISH COUNCILLORS

Stephen Fuell: 417792  
stevefuell@f2s.com  
Steve Baird 738205  
Steven.Baird@cooperindustries.com  
Ken Crossett 414168  
kencrossett@slipend.co.uk  
Janet Crawley: 07752 902070  
crawley\_janet@yahoo.co.uk  
Sarah Minnighan  
s.minnighan@btinternet.com  
Paul Cooper  
paul-cooper@indigo-tiger.com  
Keith Holme: 07969 154783  
holme@keithjan.fsnet.co.uk

## CLERK TO THE PARISH COUNCIL

Peter Segal: 526594  
(9am to noon weekdays)  
clerk@slipend.co.uk

## CENTRAL BEDS COUNCIL: 0300 300 8000

### CENTRAL BEDS COUNCILLORS

Richard Stay: 0300 300 4230  
Richard.Stay@centralbeds.gov.uk  
Ruth Gammons 01582 738398  
ruth.gammons@centralbeds.gov.uk

## MEMBER OF PARLIAMENT

Gavin Shuker  
020 7219 500 or 07505 738666

## CHURCHES

### St Andrew's Church

Rev. Cathy Pullinger: 725061 Mob 07425 148046  
Wardens: Tony Willson 482681  
Susan Wiltshire 727477

### Aley Green Methodist Church

Minister: Rev Philip Horner  
Senior Steward: Ann Meader 733668

## SHOPS & SERVICES

At the Crossroads, telephone 401069  
Monday to Friday 6.30 to 21.00 Saturday 7.00 to 21.00 - Sunday 7.30 to 21.00  
**Garage:** Slip End Garage, Markyate Road, telephone 456888

**Website: [slipend.co.uk](http://slipend.co.uk)**

## **GREETINGS FROM CATHY PULLINGER**

November is, of course, the month in which Remembrance Day falls, and we will be having our usual Remembrance Sunday service at 10.30am on Sunday 13<sup>th</sup> November, during which we will keep the two minutes silence. Many of our local Councillors and members of the uniformed youth organisations attend this, but of course everyone is very welcome, whether or not they have a particular link with an organisation.

This year is somewhat unique because we are in the 11th year of the 21<sup>st</sup> C. This means that the two minutes silence on Remembrance Day itself will fall at 11am on the 11th day of the 11th month of the 11<sup>th</sup> year, so we have decided to have the church open for individual prayer and reflection for an hour on Friday 11<sup>th</sup>, from 10.30am to 11.30am. We will stand together for the two minutes of silence at 11am and then have a very short, said, service of remembrance. Again everyone is very welcome to come to this, for however long you would like to stay.

Remembering the past and reflecting on what has gone before is very important. When we remember the brave, and honour the selfless behaviour of those who gave their lives, we encourage such worthy behaviour in the present. The heroes of the past can be the inspiration of lives today.

Whenever I see or read things about war I am amazed at the courage, the dedication, the heroism of so many ordinary guys who did indeed give their lives for others, sometimes simply carrying out their duty, but often out of love for a fellow serviceman or a belief in the cause of the war. Then there are the others who return with external and internal wounds that change their lives forever. It is right that we continue to honour such men and women, and to support the families of those whose lives have been torn apart through conflict.

However, it is also vital that we remember the awfulness of war, the tremendous tragic loss of young life, the carnage and barbarity of war, so that we do all that we can to avoid going down that route whenever there is an alternative

means of establishing a righteous peace. The mistakes of the past can also be the instructors of today.

There are many exhortations in the Bible to bring things to remembrance. We are encouraged to remember God's goodness in the past, to inspire us to come into faith and pray for his help in present difficulty.

We are sometimes reminded of the lives of those who were resistant to the love of God. The Bible gives us examples of those whose lives went terribly amiss when they turned their back on him to encourage us to open ourselves to the love of God and to walk in his ways.

And then Sunday by Sunday whenever we gather for a Communion Service I read the words: Do this as often as you drink it in remembrance of me. In each communion service we remember how Jesus gave his life for us, how he shed his blood for us in order that we may be forgiven. We remember and celebrate how he conquered death and rose again.

When we remember what Jesus has done for us in the past, it helps us to receive, in the present, the benefits of his death and resurrection for us. It helps us to come into faith once again. To come back to him again believing that if he loved us so much to die for us, then surely he will answer our prayers and come to our aid today. When we remember how he was victorious over death, it helps us believe that he can be victorious in the circumstances that are challenging in our lives today.

Remembering is much more than reminiscing. It is not just a looking to the past but a bringing all that the past can teach us, all that past events have won for us to us, into the present, and being thankful for them.

Please know that you are very welcome to join us for our Remembrance Services and at our regular remembrances of Jesus death and resurrection at our communion services.

Every blessing,

Cathy



---

## **DATES FOR NOVEMBER AT ST ANDREW'S CHURCH**

---

- Tues 1<sup>st</sup> 8-9.30pm: Parenting Course – Build a strong family centred on love.  
Wed 2<sup>nd</sup> 10am: Little Stars – shoe boxes  
Sun 6<sup>th</sup> 10.30am: Shoe Box Sunday Cafe Church with simple breakfast  
Tue 8<sup>th</sup> 8-9.30pm: Parenting Course – How to meet your children's needs  
Wed 9<sup>th</sup> 10am: Little Stars - Teddy Horsley explores God's world  
Wed 9<sup>th</sup> 7.45pm: Prayer & Worship  
Fri 11<sup>th</sup> 10.30 – 11.30am: Church Open for Remembrance Day  
Sun 13<sup>th</sup> 10.30am: Morning Praise (organ+ Singers) - Remembrance Sunday Service  
Tue 15<sup>th</sup> 8-9.30pm: Parenting Course – How to set effective boundaries  
Wed 16<sup>th</sup> 10am: Little Stars – Remembering  
Friday 18<sup>th</sup> 2pm: Service at Woodside Residential Care Home – All welcome  
Sun 20<sup>th</sup> 10.30am: Holy Communion (organ+ Singers) – Christ the King  
Tue 22<sup>nd</sup> 8-9.30pm: Parenting Course – teaching healthy relationships  
Wed 23<sup>rd</sup> 10am: Little Stars – Preparing for Advent  
Sun 27<sup>th</sup> 10.30am: Morning Praise (band) Advent Sunday  
Tue 29<sup>th</sup> 8-9.30pm Parenting Course – Passing on your values  
Wed 30<sup>th</sup> 10am Little Stars – Mr Christingle!

---

### **LITTLE STARS AT ST ANDREW'S CHURCH**

---

Little Stars meet in the family room at St Andrew's Church on Wednesday mornings and have plenty of space for any new mums to come and join our informal activities. We open at 9.30am for drinks etc and start at 10:00am allowing time for Mums to leave at the end to collect older children.

\*\*\*\*\*

Lucy and Henry Sandle are pictured here in the lovely outfits bought on their amazing holiday around Malaysia and Singapore,



which they wore to Church a few weeks ago. Lucy's outfit is from Kuala Lumpur and Henry's outfit is from Melacca in Malaysia.

Read more about their wonderful holiday later in the magazine.

The photos inside the cover show that the Harvest festival service was a very colourful one.

The church was decorated with flowers and produce, from the school and elsewhere. Packages were made up as gifts for elderly residents and delivered after the weekend.

**Can't get to church on Sunday?**

**You would be very welcome**

**to join us**

**at the simple services we hold at the care homes in the area**

at Woodside Residential Care Home at 2pm on Fridays, 18<sup>th</sup> Nov and 16<sup>th</sup> Dec

at Caddington Hall Care Home at 11am on Wednesdays, 16<sup>th</sup> Nov and 14<sup>th</sup> Dec

---

## **HARVEST SUPPER**

---

Didn't they do well!! This year the Dunstable Music Centre Ukulele Orchestra, led by Peter Smith, entertained us. They were a resounding success and left everybody wanting more. There must be a special mention for the two youngest members of the orchestra (aged nine) who were playing on stage in front of an audience for the first time. They played very well.



The entertainment was rounded off by Sylvia (violin) and Hilary (keyboard) from St Andrews, playing some of their favourite pieces and leading us all in a rousing rendition of "We plough the fields and scatter".



I would like to say thank you to all those who set out the hall, did the catering, donated salads, jacket potatoes and pies, and cleared the hall, not to forget those of you who came and made the evening very worthwhile. The surplus jacket potatoes were donated to the Noah Project in Luton for lunches the next day. Surplus bread rolls and fruit crumbles were given to Elstow Bunyan Christian

Fellowship for their Harvest Supper the following day and we received a donation from the group.



I would like to add a footnote to say we had some money over and were able to make a small donation to the St Albans Diocese Bishop's Harvest Appeal 2011. This is a type of charity we are always pleased to support. It is set up to lend, what are, to us, small amounts to help people start projects of their own to lift them out of poverty and pay to educate their children and not lose their self-respect.

More information can be found about the appeal at

[www.stalbans.anglican.org/Mission/Bishop-s-Harvest-Appeal-2011](http://www.stalbans.anglican.org/Mission/Bishop-s-Harvest-Appeal-2011)

*Sue Lyons*

Peter and the Ukulele orchestra also gave a concert on the stage at Dunstable's Little Theatre on Saturday 15th October. It was a very enjoyable evening. There were solos and duets from several members of the group. A raffle during the interval included the prize of a ukulele and the winner was able to join the group on stage for a couple of numbers, after a five minute lesson! Money raised from the evening goes to the music centre's funds and they are hoping to buy a bass ukulele for the group to use. It is good to see plenty of support for the Centre which does great work interesting young people in music.

*Alison Wilson*



This month is a good time for planting roses as the ground is still warm enough to encourage root growth. Heel in around the roots to make firm, the

union of stem and root stock should be one inch below soil level. Ramblers and climbers should be planted at least eighteen inches away from a wall or fence to avoid the roots becoming too dry which leads to poor growth.

Chrysanthemums are best lifted and replanted in the greenhouse border or cold frame, keep moist during the winter but do not over water.

If you have lifted any dahlias last month check them regularly and if the tubers are shriveling up, soak them in tepid water until they plump up. If any tubers show signs of rotting cut them off and discard them and dust the plant with flowers of sulphur.

Gladioli lifted last month should have dried by now so break off the old stem, remove the bulblets and break off the old corm from the bottom of the new corm and discard, any soft or badly shriveled corms should be thrown away. The bulblets can either be planted out to grow next spring, but will not flower for two years, or burnt. Do not put on the compost heap as they will spring up everywhere.

Complete planting of tulips and hyacinths as soon as possible. All sorts of fruit can be planted this month including apple, pear, blackberries, black/ red/ white currants, cherries, gooseberries, peach, nectarine, raspberries and strawberries.

On the vegetable side, over-wintering broad beans can be sown for an early crop, also garlic and Japanese onions.

When the weather permits rough dig over any vacant ground and leave in clumps to be

broken down by the frost and winter weather, also dig in manure where required. As you clear crops and weeds consign them to the compost heap to rot down over winter, leaves can be collected and rotted down to become leaf mould, this takes a little longer but is a very good soil conditioner and retains moisture in the soil.

The lawn should not need cutting after this month so it's a good time to clean the mower and get the blades sharpened ready for spring. As the seed catalogues start to arrive and the nights draw in, now is a good time to order your seeds and plan your garden or allotment for next year.

There are still some allotments left for anybody who is interested. If you feel daunted by taking on a plot, why not see if you can get a friend to share, you will find it worthwhile and very rewarding.

Don't forget, if you have any questions you can e-mail the writer at:-  
[russell.sprout1@hotmail.co.uk](mailto:russell.sprout1@hotmail.co.uk)

I will be putting pen to paper again next month, in the meantime happy gardening.



*Russell Sprout*

---

**M1 JUNCTION 10A IMPROVEMENT SCHEME**

---

A community consultation exhibition about the plans was held at Stockwood Park and the Mall, Luton on 14th & 15th October. It showed information about the planning application. Comments are invited before 15th November. If anyone is interested, the plans can be seen at the town hall or all the information can be found online at:-

[www.luton.gov.uk/M1J10A](http://www.luton.gov.uk/M1J10A)

## COMMUNITY INFORMATION

### Let's Talk Together

Community Meeting for the Dunstable, Houghton Regis and Rural area

**Date:** Tuesday 29th November

**Time:** 7-9pm

**Location:** Heathfield School, The Green, Caddington, LU1 4HF

Visit the market stalls anytime between 7pm and 7.45pm to talk to a range of public service providers, meet your local policing team and your Parish and Ward Councillors.

From 8pm join the conversation with other residents to decide the community safety priorities for the area, discuss local topical issues and what can be done together to make things work better.

The meeting will be chaired by a Council Executive Member .

For further information please visit [www.centraltogether.org.uk](http://www.centraltogether.org.uk)

## WHAT TO DO IN SLIP END, ALEY GREEN, PEPPERSTOCK AND WOODSIDE!!

If you look carefully and ask around your friends and neighbours there are plenty of things to do in the area.....(See information pages and adverts in the magazine)

Sports and fitness activities include Tennis, Line Dancing, Ballroom Dancing, Zumba, Keep Fit, Football, Archery, Bowling and more.....No excuses not to be slimmer or healthier if we make a little effort!

If you want to be a little intellectual or cultured then there are plenty of quiz nights and competitions and other events organised by local Churches and groups often as fundraising ventures. We have theatres, museums and libraries nearby too. Recently a number of local residents have attended the DAOS (Dunstable Amateur Operatic Society) production of Jesus Christ Superstar at the Grove Theatre which was very professional and an excellent performance.

Lastly our spiritual well-being is cared for by a number of local churches who will always welcome visitors or strangers to services and other activities!

*To keep track of latest local issues, events, etc., visit .....*

***[www.slipend.co.uk](http://www.slipend.co.uk)***

*Our website contains lots of information covering all activities and groups in the Parish. Web mistress Sarah Minnighan & Webmaster Peter King have been working hard to update information and improve presentation.*

### Charisma Hair & Beauty Salon

Ladies  
&  
Gentlemen

☎ 722801



#### Opening Times

Mon: 9.15-2.45  
Tues: 9-5  
Wed: Closed  
Thurs: 9-6  
Fri: 9-7  
Sat: 8-3

Air-conditioned - Easy Parking - Chiropody  
Remedial Massage - Indian Head Massage  
43B Elm Avenue, Caddington



### Catherine Hazell Crafts

Handmade Doorstops,  
Bunting & Gifts

Take a look at ...  
[catherinehazellcraft.co.uk](http://catherinehazellcraft.co.uk)

Call 07962 621967

**NEIL SHEPHERD**  
**Painter & Decorator**  
**General Maintenance**  
**Fully Insured & Approved**  
**07860 93 93 93**





# **SLIP END SOCIAL CLUB**

*New Street, Slip End*

**☎ 415804**

Live Sky Sports on the Big Screen - Pool - Darts - Crib - Dominoes  
Bingo Wednesdays; Saturday Night Entertainment every fortnight  
Golf Society

*Be social  
make it  
your local!*

Opening times:

**Weekdays: 4.00 to 11pm**

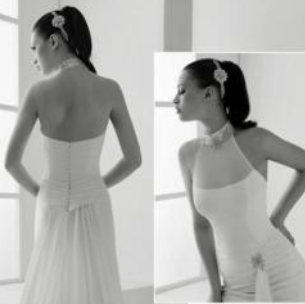
**Saturdays: 12 noon to 12 midnight**

**Sundays: 12 noon to 11pm**

*New members  
& their families  
welcome!*

*Usual Club prices!*

# Mignonette



**Specialists in  
Bridal Gowns  
Bridesmaids  
1st Communion  
Prom Wear**

**Alterations on all garments**

## Mignonette Beauty

**Waxing  
Tanning  
Nails (gel)  
Nails (acrylic)  
Facials**

**Semi-Permanent make-up**

**The Chapel, 38a Church Road,  
Slip End, Luton, Bedfordshire LU1 4BJ  
01582 402345**

**info@mignonette.com  
www.mignonette.com**



## **SLIP END LOWER SCHOOL**

The new school year is now well under way with our new arrivals settling into the routine of school and everyone getting used to their new classes where they have moved on up the school. The biggest change has been for the EYFS (Early Years Foundation Stage) which now sees the children starting their Reception school year full-time straight away rather than through a staggered entry throughout the year.

We are also proud to announce that we have successfully achieved the Full International Schools Award and are delighted by this. You may remember from our Parish News update back in the summer that we were working hard to achieve the award through including activities like our International Day and links with an overseas school. We will be continuing to work to build upon our International teaching and learning throughout the school to enrich the children's learning experiences in the future.

Another goal we have set ourselves is to work towards being a 'Sustainable School'. During the summer holidays Mrs Casson and her family worked very hard to build our eco-friendly greenhouse. The whole school community collected nearly 2000 plastic bottles throughout last year and they have now been transformed into a greenhouse. We are now all looking forward to planting and growing our own produce in it.

We have further strengthened our link with 'Planet Sport' and the children are now receiving 2 hours of professional PE and sports teaching per week. All the children from Reception upwards are benefiting from the skills and expertise of our professional coach and thoroughly enjoy their lessons whether they are indoors or out on the school field.

Harvest Festival was our first whole school and community celebration of the school year and took place at the end of September.

A wonderful selection of produce was brought in to the school by the children and displayed in the school hall along with some of the children's handiwork. You can see some of the scarecrow puppets made to decorate the hall in the photos of the display. The celebration was opened by St Andrew's vicar Cathy Pullinger who spoke and presented a Powerpoint slideshow to the children about the various produce that we give 'Thanks to God ' for at Harvest time and then each class performed a song or poem to a packed audience of pupils, parents and community members. It was a great success and despite an unseasonably warm hall, the children performed beautifully. Cathy and a few helpers packed their cars up after Harvest Festival and took all the produce to the church ready for the church service on Sunday, then it was distributed to older members of the community by a team of helpers on the Monday



It won't be long before Christmas is upon us and the school is already planning a 'Musical Christmas Nativity' performance involving every child from Nursery through to Year 4, Performances will be Tuesday 13th December at 2pm and 7pm so put the date in your diary now. We will also hold a 'Christmas Skills Activity Day' where the children will participate in mixed aged group craft activities making a variety of decorations to put up around the school. Christmas wouldn't be complete without a Children's Entertainer and Class Parties in the run up to the special holiday season itself. Look out for our next update in the New Year.

*Sandra Collins*

# U.E.S

## Utility Engineering Services



Power  
Failure?



All electrical works carried out including:  
24hr call-out, rewires,  
testing, extra sockets etc.

## Contact Paul

 **01582 450800**



## BIO SCULPTURE NAIL TECHNICIAN

The perfect solution  
for beautiful hands.  
Based in Slip End.

Contact Rachel  
**07870833080**

[Rachel.gilligan@ntlworld.com](mailto:Rachel.gilligan@ntlworld.com)

10% discount with this advert!

## PH SERVICES

CAR & MOTORCYCLE REPAIRS

PHILIP HALL  
MECHANIC



- \* Servicing
- \* MOT
- \* Tyres
- \* Bodywork
- \* Computer Diagnostics

UNIT 3  
MANOR ROAD GARAGE  
CADDINGTON

Office: 01582 722251  
Mobile: 07769 734417

e-Mail: [phillhall1200@btinternet.com](mailto:phillhall1200@btinternet.com)  
Damaged bikes wanted for Cash  
Nationwide collection

10% Discount  
with this voucher!



Painting & Decorating  
**PETE the PAINTER**  
for all your decorating needs

- Laminated Flooring
- Carpentry Work undertaken
- Tiling - Floors & Walls
- Over 20 years experience

4 Elm Avenue Caddington

Call for a free Quotation

Tel: 01582 453611

Mobile: 07971 348485



## PILATES

'Intelligent Exercise'

A method of exercise  
and physical movement  
designed to stretch body.

Group sessions at  
Slip End School

For information  
call Andrea on  
01582 458886



## Stoten Gillam

chartered accountants  
chartered tax advisers

PRACTICAL SOLUTIONS FOR  
GROWING BUSINESSES

**01582 608601**

Alban House  
99 High Street South  
Dunstable LU6 3SF

[www.stotengillam.co.uk](http://www.stotengillam.co.uk)  
[enquiries@stotengillam.co.uk](mailto:enquiries@stotengillam.co.uk)



ACCOUNTS  
TAXATION  
AUDITS  
FINANCIAL  
ADVICE  
PAYROLL  
COMPUTER SERVICES



## Scissors

Mobile Hairdresser

Experienced, London  
trained hairdresser,  
now available locally.

Call Dorothy  
tel: (01582) 726410  
Mobile: 07563 764676



***Would you like your family life to be the best it can be?  
Take this opportunity to invest in the future of your children!  
For those parenting 0-10 year olds, come to our Parenting Course!  
In 5 weekly sessions you will discover some practical tools.***

**These will help you to ...**

**Build a strong family centred on love**

**Meet your children's needs**

**Set effective boundaries**

**Teach healthy relationships**

**Pass on the values you hold to be important.**

**To get to know one another**

Each evening will begin with hot drinks & puddings!

There will be a talk on DVD, interviews with parents & children,  
advice from experts and a chance to discuss or listen.

You need not share anything about your family life that you would prefer not to.

*Come to the family room at St. Andrew's Church, Church Road, Slip End*

*On Tuesday Evenings, November 1, 8, 15, 22, 29 from 8pm to 9.30pm*

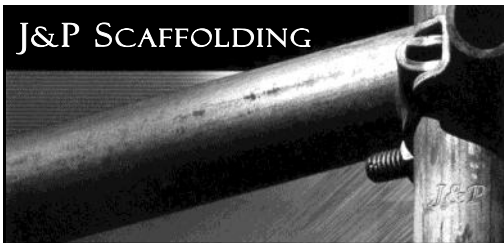
The course is based on Christian principles but has been widely used  
with parents and carers both with and without a Christian faith.

There will be no charge for the course!

For more information or to let us know that you are coming  
please contact Cathy (07425 148046) or Charlotte (521798)



J&P SCAFFOLDING



**Phil Johnson**

Mobile: 07720 846963 Tel/Fax: 01582 429106

T. HUSSEY

## TONY HUSSEY PLASTERING SERVICES

Mobile: 07730 744174

E-Mail: [tonyhussy@aol.com](mailto:tonyhussy@aol.com)



CONSTRUCTION LTD

e-Mail: [srccs.construction@yahoo.co.uk](mailto:srccs.construction@yahoo.co.uk)

Contact  
Sheldon Stanbrook  
39 Front Street  
Slip End  
LU1 4BD

Tel: 01582 730549  
Mob: 07790 583118

*Do you want to advertise  
In this space?*

*Contact Katrina on 07753  
168443*

*Or [hatsbydoo@btinternet.com](mailto:hatsbydoo@btinternet.com)*

## Chiropodist

*State Registered*

*Home visits*

*Evening & weekend appointments*

*Keith Appleby BSc (Hons), MChS, SRCh*

*Telephone: 01582 873136*



## RLS AUTO REPAIRS

GENERAL REPAIRS, SERVICING,  
MOT & FAILURES, DIAGNOSTICS  
GEARBOXES & CLUTCHES,

RUSSELL (DAVE) STANBROOK

80 MANOR ROAD  
CADDINGTON  
LU1 4HQ

07976 584949

[rlsautorepairs@hotmail.co.uk](mailto:rlsautorepairs@hotmail.co.uk)



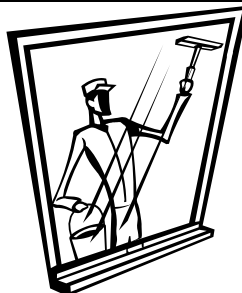
## Pastel Painting Artist Portrait



Dogs a Speciality - Reasonable Rates

Contact: Bea Malsbury (Slip End)

Tel: 01582 488489



## Need a reliable Window & Carpet Cleaner?

*We operate in the  
Slip End area*

*For free quotation  
contact us on*

*01462 629302*

*07970 406 926*

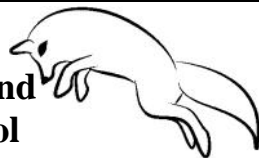
## DOMESTIC APPLIANCE REPAIRS

Washing Machines, Dishwashers,  
Driers, Cookers, Microwaves,  
Fridges & Storage Heaters

**Barrie Acton**

**Slip End (01582) 728865  
or Mobile 07802 723160**

## A. McClelland Pest Control



For fast response call  
Mobile 0777 494 8415  
or office 01582 872158

e-Mail: [a.mcclelland\\_pestcontrol@hotmail.co.uk](mailto:a.mcclelland_pestcontrol@hotmail.co.uk)

# Richard Gurney & Son Contracting Services

Longview, Luton Road, Markyate

*Tree Surgeons & Fencing Specialists  
Hedge Trimming & Tree-stump removal  
Wood Chippings (good for mulching)  
Logs for Sale*

☎ (01582) 840407

*Established 1970 - Fully Insured*

## REFLEXOLOGY

This complementary therapy works on the feet to aid healing to the whole person. It helps us to cope on physical, mental and emotional levels, encouraging healing and maintaining health.

Reflexology may aid:

*Stress-related conditions • Back Pain • Migraine  
Fertility • Sleep disorders • Hormonal Imbalances*

*www.Starlighttherapy.weebly.com*

*Call Lyn on 01582457815 or 07926367810*



## PROBLEMS WITH YOUR PC OR APPLE-MAC?



*For expert advice & trouble shooting  
call Tony Glynos on 458353  
tony.glynos@talk21.com*

## THE FRAME SMITH

Beautiful Bespoke Picture Framing

*Free local service in your home with free collection & delivery  
or visit me by appointment at my workshop in Slip End*

Free Estimates & Advice  
Call Anthony Smith  
The Frame Smith

Daytime: 07976 830906 After 6pm: 01582 424516



# INKERMAN

## BUILDING & ROOFING Co

EXTENSIONS - CONVERSIONS- RENOVATIONS  
[www.inkermanbuilding.co.uk](http://www.inkermanbuilding.co.uk)

*The Complete Design,  
Plan-completion Service included*

- ✓ New Build ✓ Restoration
- ✓ Electrical Work & Plumbing
- ✓ All General Building Work
- ✓ Flat & Pitched Roofing
- ✓ Brickwork Contractors
- ✓ Painting & Decorating
- ✓ Insurance Work

☎ 01727 835702 (office)

☎ 07774 955255 (mobile)

01582 876509 (home tel/fax)

e-mail: [info@inkermanbuilding.co.uk](mailto:info@inkermanbuilding.co.uk)



*Do you want to advertise  
in this space?*

*Contact Katrina on 07753 168443  
hatsbydoo@btinternet.com*

## JOHN SAUNDERS & SON Incorporating E. Franklin & Co.

## FUNERAL DIRECTORS

48 Duke Street, High Town, Luton



☎ 731696

Day & Night Service

Monumental Services  
Members N.A.F.D.

*Prepaid Funeral Plans available*



## **FARLEY HILL METHODIST CHURCH**

Members of Farley Hill Methodist Church joined St Johns Anglicans for a special occasion. It was the last joint service to be taken by the Reverend Diana Sanders, vicar at St Johns. Ken Cameron presented Diana with a card and gift on behalf of Farley Hill Methodists and spoke of how they all had enjoyed her services and her excellent sermons, a sentiment which drew loud applause from the congregation.

In reply, Diana thanked Farley Hill Methodists for the lovely gift and card and for their fellowship over the previous four years. Rev Diana told the congregation she had enjoyed her stay in Farley Hill very much.

Diana is retiring to Cambridge and has accepted an invitation to return to the estate for Farley Hill's 50th anniversary service in September 2012.

The three churches coffee morning on 6th October raised £135.00 for the Macmillan Cancer Research fund.

The October lunch club was its usual well attended jolly event and the November date is Wednesday 9th. Cottage pie, a seat and lots of fun for only £3.00. 12.30 for 1pm

Tina Hayton and Ken Cameron are taking a party of 30, 24 children and a few mums, to the Luton Library Pantomime— Snow White on Friday 9th December. All who survive will attend the carol service and children's party on Sunday 11th, Christmas will have well and truly got under way.

*Ken Cameron*

07852424628

khubsurat1@xlnbb.co.uk



## **GARDENING CLUB**

Martin Towsey, Head Gardener at Woburn Abbey, will be speaking about the role of a Garden Manager. The meeting will be followed by drinks and a finger buffet.

*PN Gardening Correspondent*

### **Next Meeting**

**MONDAY 21ST NOVEMBER  
8pm Village Hall**

**Guest Speaker Martin Towsey  
(The role of a Garden Manager)**

**NEW MEMBERS WELCOME  
GUESTS/VISITORS £2 each**

## **High Elms Tree Surgery Ltd**

**SHAUN MORRIS**

*Specialist in: ~*

- FELLING
- LOPPING
- SHAPING
- STUMP REMOVAL
- HEDGES TRIMMED, SHAPED & REMOVED
- DEAD WOODING
- REDUCTIONS
- CROWN LIFTING
- WOOD CHIPPINGS
- LOGS DELIVERED
- TREE REPORTS
- TREE SURVEY INSPECTIONS
- T.P.O. & PLANNING APPLICATIONS

• 24 HOUR EMERGENCY SERVICE

• No Job too small • Free Estimates & Advice

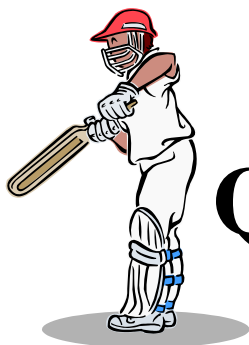
Fully Insured to £5 Million

Approved by Local Authorities

**Tel: 01582 840144 Mobile: 07939 623675**

***www.highelmstreesurgery.co.uk***

**Old Beechwood, Cheverells Green, Markyate. AL3 8AB**



# **QUIZ NIGHT SATURDAY 26 NOVEMBER**

**Peter Edwards Hall Slip End Playing Field**

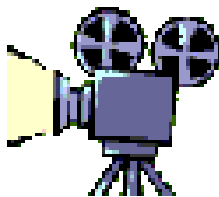
**Teams Maximum of 8 People**

**Fish or Chicken & Chips Supper  
£7.50 per person**

**Bring your own  
Knives, Forks, Drinks & Glasses**

**(Doors open 7.00pm – 7.30pm start)**

**Contact for tickets  
Steve 414162**





# **ALEY GREEN METHODIST CHURCH**

## **Services and Diary dates for November**

### **Tuesday 1st**

#### **All Saints Day**

7.30pm Bible Study - Rev Bob Forrest

### **Sunday 6th**

11.00am Morning Service - Rev Bob Forrest  
All Age JMA Service

### **Tuesday 8th**

10.00am/12.00noon 'Cakes & Company

### **Sunday 13th**

#### **Remembrance Sunday**

No service or Sunday School at Aley Green  
We will join with All Saints or St Andrew's  
for their services.

### **Wednesday 16th**

7.30pm Coffee Evening  
In aid of

Leaders of Worship & Preachers Trust

### **Sunday 20th**

11.00am Morning Service - Rev Phil  
Horner  
Sunday School Communion

### **Monday 21st**

7.30pm Fellowship Meeting - Mike Bull

### **Sunday 27th**

#### **First Sunday in Advent**

No Morning Service or Sunday School

4.00pm Ecumenical Service led by  
Rev Phil Horner

Followed by afternoon tea

~~~~~

A BIG thank you to everyone who supported our Macmillan Coffee Morning. It was a fantastic team effort with bacon butties, home made cakes, stalls, tombola and name the teddy (won by Mia and called 'Bertie the Bear'). Thank you also to the Caddington Show committee who allowed us to have a

stall for Macmillan to name the bear which raised £68.00 towards our grand total of £1000.00!!! A superb effort by all those involved.

Our Autumn Fayre had all the usual stalls, cakes, preserves, lunches and the children's stall. All did brisk business and we raised over £660.00 for church funds.

The preserve team has been very busy over the past few weeks re-stocking and preparing our 'Christmas lines'. We have had lots of apples given to us so we will be having a peel and slice evening soon and then we will be in to the pickled onions. The allotments have done well this year and we have been grateful for the kind donations of produce and sugar. We have pickled beetroot this year and that has been very popular.

November promises to be a quieter month at Aley Green but we look forward to seeing you at Cakes & Company and our Coffee Evening for Leaders of Worship and Preachers Trust, a Methodist charity.

In December we are looking forward to taking part in All Saints Christmas Tree Festival, then follows our Nativity Festival Friday 16th to Sunday 18th December, closing with the Children's Nativity Service.

What a lovely time of year Autumn is, the wonderful colours of the trees as you drive along the lanes on sunny afternoons. It always brings to mind that beautiful hymn, 'How Great Thou Art', translated from the Russian by Stuart Hine.

*O Lord my God, when I in awesome wonder  
Consider all the works thy hand hath made,  
I see the stars, I hear the mighty thunder  
Thy power throughout the universe displayed.  
When through the woods and forest glades I wander  
And hear the birds sing sweetly in the trees;  
When I look down from lofty mountain grandeur  
And hear the brook and feel the gentle breeze*

As always a warm welcome is guaranteed at Aley Green, hope to see you soon

*Ann Meader*

---

## FOSELS NEWS

---

Special thanks to the following companies who all sponsored the Race Night last month at the Frog & Rhubarb to raise funds for FOSELS:-

Lunatic Fringe Hairdressing, Mignonette,  
Caddington Pizzeria, Fantastic Fireworks  
Slip End Pet Shop, Town and Country  
Slip End Garage & Frog and Rhubarb

FoSELS is holding 'Ye Olde Christmas Shopping Event' at Slip End Lower School on Saturday 12<sup>th</sup> November, 2011 from 4pm-8pm. (see poster)

Entrance is by ticket only (on sale beginning of October), which can be bought from Mandy in the school office or from Naomi for £3.50 each which includes a warm mince pie, 50% off your 1<sup>st</sup> drink and 1 ticket into the prize draw. Children are admitted free of charge. Mrs Claus will also be attending, to read Christmas stories to the children while they enjoy a mug of warm cocoa and a biscuit (£1 per child), in the secret grotto! Tickets for this will be on sale alongside the main event tickets.

Come and enjoy a glass of Mulled wine and a warm mince pie, while you browse through our extensive stalls to find that perfect gift for that special someone. With carol singers, entertainment, hot food, roasted chestnuts and a raffle, it's the perfect excuse to wrap up warm and brave the cold! If you are interested in a stall please contact Naomi on 07787 401937 or email:- fundraising@slipend.co.uk

---

## CADDINGTON WI

---



We held a very successful Table Top Sale in August. The Darts Ladies have been playing a few matches and enjoying the games.

Our birthday party was celebrated in September.

We invite members of our Group to join us. A meal of Coronation Chicken, Salad and Rice and sweet was provided by Stephanie together with her 'little helpers'. Sue cut the cake which was very tasty. Boccia was played as our arranged entertainment was cancelled. Everyone enjoyed the evening.

Sandra Lawes gave us a really interesting talk and slide show about her adventures in Nepal - a fund raising event for The Princes Trust. Sandra started off with a really full grin in her photo all dressed up in walking boots, warm coat, hat and backpack. A lot of walking training had to go into the trip as 14,000 feet was the height to climb. Her pictures of the people and landscape of Nepal and the surrounding area were superb with her little tales of their lifestyles and stories. For a country with so much poverty the people are very happy and friendly, very enlightening. Although 7 people did the trek there was a team of 14 local Nepalese doing all the preparing of the tents, cooking etc. As the photos of the trek went on Sandra was donning the correct walking clothes, walking boots and backpack and training hard for this event. Her face at some of the stages of the trek was sullen due to the long day and tiredness which came with the trip. However, she kept going and managed to reach their summit which brought about much cheering! The view at the top was amazing looking at all the snow capped mountains. Then came the trek down - four days up and four days down! Finally, Sandra said one of memories she has of this trip was a sighting of Mount Everest saying it was amazing, also the silk scarves the team of helpers gave her as keepsakes. A trip she will never forget. What are you going to do next Sandra?

Our competition was a model elephant which was won by Carol Jones with Lorna Kalisz second and Jean Turner third. Well done ladies.

Sadly we send condolences to the family of one of our long term members, Betty Orman, who has sadly died. We shall miss Betty as she was quite a character.

To look forward to: We shall be laying our Poppy Wreath on Remembrance Sunday.

Our speaker for November will be Charles Porter on Old Lamps & Country Characters. Our competition will be An Old Wives Tale. In December we will be decorating a Christmas Tree in All Saints Church and our meeting will be a Christmas Get Together. Do join us.

We meet the Third Tuesday in each month at the Baptist Church Hall, Luton Road, Caddington starting at 7.30 p.m. You will be very welcome.

*Linda Edwards*

# ***YE OLDE CHRISTMAS SHOPPING EVENT***

***CAROL SINGERS***

***HOT FOOD***

***ENTERTAINMENT***

***RAFFLE***



***MULLED WINE***

***WARM MINCE PIE***

***ROASTED  
CHESTNUTS***



***SATURDAY NOVEMBER 12TH  
4 TIL 8PM  
SLIP END LOWER SCHOOL***



***AN OLDE WORLD EXPERIENCE, IN THEMED DRESS***

***WHILST YOU BROWSE THROUGH OUR EXTENSIVE STALLS  
TO FIND THAT PERFECT GIFT FOR  
THAT SPECIAL SOMEONE.***

***ITS THE PERFECT EXCUSE TO WRAP UP WARM.***

(More info to follow, if you are interested in a stall please contact Naomi Negus on 07787 401937 or fundraising@slipend.co.uk)



### **The Plough**

Congratulations to our Darts Team on winning the first two games of the season. Well done and keep up the good work!

Congratulations to our Domino Team on winning the first game of the season. Well done!!

### **Happy Evenings!**

Buy one main meal & get one free! Pick from all of our menus.

Tuesday to Friday 5 till 8 pm. (The cheapest one free)

### **The Roast House Menu!**

Monday to Friday Lunch 12-2.30 pm and Tuesday to Friday Evening 5-8 pm £4.95 per person. Choice of Lamb, Beef, Chicken, Gammon or Nut Roast (v) served with vegetables and roast potatoes.

Our **Christmas Party Menu** is now available, for either lunch or evening celebrations. Choose from either a 2 course or 3 course meal from £11.95 per person.

We cater for all occasions: Birthdays, Christenings, Small Wedding receptions, Funerals, Anniversaries Etc. The dining room is available for private use. Booking required.

Visit our Website for more details [www.theploughwoodside.co.uk](http://www.theploughwoodside.co.uk)

### **Frog & Rhubarb.**

The Frog has gone greener! The pub is now recycling nearly 100% of all its waste, which means there is nearly nothing going into landfill. As well as the usual cardboard, plastic, paper and metal, the pub now has all its waste food recycled. Anaerobic digestion of food waste is used to produce bio gas whilst waste cooking oil is used to make bio fuel. Several years ago, the pub reduced its carbon footprint substantially when it

reduced the number of light bulbs by a third and replaced all the remaining bulbs with low energy versions. This year the pub has made another step to reduce emissions by installing up to the minute loft insulation. Unfortunately, due to its age, the building is not suitable for cavity wall insulation but rest assured, the team at the Frog will continue to look for ways to reduce its impact on the planet.

Christmas may still seem a long way away but now is the best time to start planning your festivities. The team at the Frog has put together a premier Christmas party menu with three courses for just £20 or five courses for £22. Menus are available at [www.frogandrhubarb.co.uk](http://www.frogandrhubarb.co.uk) or from the pub.

You can be guaranteed the very best quality food prepared by the pub's team of chefs on Christmas Day. The five course gala dinner has an amazing choice of dishes including the traditional favourites and is only £50. Let the whole family have a relaxing day while someone else does all the work. Space is very limited and filling up fast so book soon!

**2 Courses For £10**, Sunday through Thursday from 5pm until 10pm. There is a huge choice of dishes to choose from and for those with a really big appetite, there is the option of have 3 courses for just £13. The Frog & Rhubarb now has the **Cheap Beer!** IPA £2.72, Fosters £2.89, Carling £2.89 and Blackthorn £2.89. Buy 7 pints and get the 8th free giving you these fantastic prices. No time limit, so no need to drink them all at once, unless you want to!

### **Community Facilities @ The Frog**

The Frog & Rhubarb has a computer with Internet access, which is free for all customers to use. If you don't have use of a computer at home, why not make use of this facility while enjoying a coffee or pint. They also have free WiFi for use by those with laptops or smart phones.

Take away food is available from the Frog every day 12pm – 10pm. They have a fantastic range of dishes at chip shop prices. You can also get drinks to takeaway at extremely reasonable prices. Cans of lager for £1, bottles of wine for £6 or a bottle of Smirnoff vodka for £15.

Up to date information on events and offers can be found on the pub's website [www.frogandrhubarb.co.uk](http://www.frogandrhubarb.co.uk)

### Rising Sun

There will be a Children's Christmas Party with Santa on the **26th November** from 4 - 6 p.m. for children aged 4 years and above. Entertainment and tea provided and a gift from Santa. Christmas lights will be turned on after the party. Tickets will be £5 available from 15th November and proceeds will go to Cystic Fibrosis.



**Wednesday 30th November** - Thai Theme Buffet Night from 6 p.m. £13 per person.



Booking advisable. Authentic Thai cooking by Bo (Phochanatarn) Cowell.

Don't forget that bookings are now being taken for Christmas - limited seating available for Christmas Day. Menu's available from the pub.

**The Rising Sun's Christmas day lunch** is from 12.30pm to 5.00pm and 2.00pm to 5.00pm.



### **Please note:-**

For pre-Christmas parties of 8 revellers or more we will provide a free finger buffet (booking required please)

### **Surprise!**

Lily has also recently hosted a surprise birthday party at the pub. Jon Barker thought he was going out on a "pub crawl" around the village, in fancy dress, with some friends. He was surprised to find that on arrival at the second destination of the evening (The Rising Sun) there were more friends there. They too were in fancy dress and Lily had provided a buffet for them.

The **Angel's Tux & Tails evening** at the Rising Sun on Saturday 24th September was kindly laid on by Lily and Shirley Garner, mother of Angel Garner who has Cystic Fibrosis. The event was to raise funds for the Cystic Fibrosis Trust. The evening was a great success and raised £427.45 by selling raffle tickets, buying cocktails and playing a bottle vodka game.



I would also like to thank Matt at the Slip End Garage for donating a big raffle prize for the evening.

I would also like to thank Kevin and Lainey at the Slip End Social Club for doing a raffle which made £255.

The Rising Sun was also holding a Halloween party for children on the 29th October to raise more funds for Cystic Fibrosis. Hopefully we can report on that next month.

*Shirley Garner*



# Nearly New Sale

**Sat 26th November**

**10-11:30am**



**Slip End Village Hall**

**Babies and children's toys, clothes ,  
equipment & maternity wear**



**For more info or a stand,**



**please call Heather on 07977 558963**

---

## **BALLROOM DANCING**

---

Ken Telford has recently started dance classes in the Peter Edward's hall on a Wednesday evening at 7.30 p.m. so if you are interested in learning how to dance why not go along and try it for yourself.



Ken has been dancing for 35 years but it was dancing with his mum at about 7 years old when he first became interested in ballroom dancing. He would go to the working men's clubs with her and dance the waltz (as the lights were dimmed). It was a real family occasion which continued when he came out of the forces and met his wife Pat at one of the social clubs. They danced socially for a while and then took private lessons and started dancing in competitions. They have danced all over the country and even represented England in Malta. They turned professional after 25 years and danced for many years (even against some of the dancers we currently watch on a Saturday evening on the television). Approximately ten years ago Ken and Pat moved from Hatfield to Woodside where they live now. In 2008 Ken decided to take the necessary exams to teach ballroom and now runs two classes.

These are on Mondays at Roundwood School in Harpenden from 8.30 p.m. and Wednesdays at the Peter Edwards Hall from 7.30 p.m.



If you are interested in joining either class ring Ken on 01582 417240 or 07704901646 or email [kentelford@freeuk.com](mailto:kentelford@freeuk.com)

The photos are from the Wednesday class where the beginners are having fun learning to do the waltz under Ken's instruction. Come and join us, you will be most welcome.



Ken can also offer private tuition and choreography for special occasions - just what you need for the forthcoming Christmas and New Year Parties or if you want to impress!  
*Sue Briggs*

---

## **STOCKWOOD DISCOVERY CENTRE**

---



The picture shows a mask made at a recent craft event during half term. There are regular events held during holidays and occasional weekends, often linked to other displays or events in the museum. The next is on 10th December .

The Informal Learning Officer is always in need of volunteers to help her out at these events. I help when I can and it can be hard work but very enjoyable and rewarding to see the children's efforts.

If you would like to help or to find out more:-

contact Karlina Craig-Barton on 01582 548486 or [Karlina.CraigBarton@LutonCulture.com](mailto:Karlina.CraigBarton@LutonCulture.com)

*Alison Wilson*

---

## WREST PARK

---

We are the sort of people who like to get out and about in the fresh air. This is not always so easy to do as the winter closes in. Days are short and evenings are dark. If the weather is wet then tramping over fields and up hills can be much less pleasant. Thus I am always on the look out for new places to visit. Our usual haunt on damp winter days is Whipsnade Zoo as there is always something to see—even if some of the animals are hiding.

We are members of English Heritage and the National Trust and have visited most of the properties in the area over our years in Slip End. Recently we found out that English Heritage is opening some places during the winter months, extending their usual hours. One of these places is Wrest Park in Silsoe.

Gardening Club members and other enthusiasts may already know about the lovely park and gardens which have recently been partly refurbished and were shown on TV. Work is still in progress but it is looking good and well worth a visit.



We picked a beautiful October day to set out and arrived in time to catch the early morning cool air which made the water appear to be as smooth as glass. The reflections were stunning. The place was deserted at opening time but got busier later,

though there are so many paths in amongst the trees that you can hardly see the crowds.



The house has an interesting exhibition and there is more to see than before. There is a lovely visitor centre and café. Parts of the Parterre were being dug up and renewed but the new Italian Garden was stunning and the colours very impressive. (Not quite so good in black and white unfortunately!)



I would thoroughly recommend it as a place to visit—which I think will be all the prettier as the leaves change colour as Autumn develops. It's not far up the A6 and there is plenty of space to park.

*Alison Wilson*

I'm sure I've asked before but anyone else who has a favourite place to visit in the local area is welcome to send us pictures or suggestions!



# THE PLOUGH

WOODSIDE ROAD  
NEAR SLIP END LU14LU

☎ 01582 720923



## Happy Evenings!

By two main meals & get  
the cheaper one free!

Choose from all our Menus.

Tuesdays - Fridays until 8

## The Roast House - just £4.95!

Mondays - Fridays, noon - 2.30pm

Tuesdays - Fridays, 5.00 - 8.00pm

## Traditional Sunday Roasts!

Choice of Beef, Lamb, Chicken,

Gammon or Nut Roast (V)

Adult £6.95 Children £3.75

## Family Pub, Dining Room, Garden & Play Area

Car Parking, Facilities for the Disabled  
& Baby Changing

## Lunches & Evening Meals

(Bookings are advisable.)

Unless bookings are made in advance,  
our Restaurant is generally closed on  
Sunday & Monday Evenings.

We take bookings for large parties.

## Join our discount club!

Get 25% off the Bar & Restaurant Menu  
on joining, 15% thereafter.

We are now taking Christmas Lunch  
& Evening Party bookings.

Menu available now!

Frog &  
Rhubarb  
country pub & dining

01582  
452722

2  
Courses  
£10

3 Courses £13

Sun-Thurs, 5pm-10pm



£2.72  
a pint\*

£2.89  
a pint\*



£2.89  
a pint\*

£2.89  
a pint\*



Buy 7 Pints Of Carling, Fosters, Blackthorn Or I.P.A.  
And Receive Your Eighth Pint Free

\*Price per pint of seven paid pints and one free. Not valid on discount nights or special events.

On the 31<sup>st</sup> of August we (Nick, Lynne, Lucy, 4 and Henry, 2) made our way to Heathrow Airport to depart to the Far East for a month of adventure. After a short stop-over at Sri Lanka, we arrived in Singapore in the early hours of the 2<sup>nd</sup> of September, rather bleary-eyed, but nevertheless excited about being so far away from home. It was the beginning of the most amazing trip of our lives.

Singapore is a mix of old colonial buildings, Chinese, Indian and Malay architecture, and ultra modern living. The shopping centres are huge and the food is fantastic, but beware of the cost, everything here is designed to make you part with your money! It is a really easy city to visit as a first timer to the Far East; everyone speaks English, the signs are all in English, they drive on the right side of the road, and it's clean with a very efficient public transport network. We visited the beautiful botanical gardens and saw the amazing orchids (they grow like weeds in the hot climate) and I was surprised to learn that Margaret Thatcher has an orchid named after her! Next on the visiting list was the Singapore Flyer – think the London Eye – and a rather bizarre experience in our capsule with 20 Iranian women, who were delighted about seeing 2 blonde haired, blue-eyed children, and wouldn't stop taking photos of them, touching them and giving them sweeties. Fortunately the children took it in their stride! Other highlights of our time there was our visit to Sentosa Island and the City Hoppa Bus ride.

After four very busy days in Singapore, we boarded the bus on our way into Malaysia and the World Heritage Site of Melacca. Melacca is very tourist friendly and we stayed right in the centre of the town. It has a very colourful Colonial past, with Portuguese, Dutch and British rule, as well as influences from India and China. We had a wonderful journey around on some very

brightly coloured Trishaws, and visited many museums. They have specialist Baba Nonya culture here, and the Nonya food is very spicy. After 3 days in Melacca we then got on the bus to Kuala Lumpur .

Kuala Lumpur is a city of contrasts, from the modernity of the Petronas Twin Towers and City Centre, to the bustling chaos and grime of Chinatown. We stayed near Chinatown and enjoyed Satay in the middle of the Petaling Street Night Market whilst Country and Western music was playing in the background!

In the shadow of the Petronas Twin Towers there is a fantastic children's adventure playground and paddling pool, with waterfalls and fountains. The kids had a lovely afternoon playing here, before we got some food in the food court of the huge shopping centre situated in



the bottom 4 floors of the Petronas Towers. At night when the towers get lit up they really are an awe inspiring sight. We also visited Merdeka Square (Independence Sq) which is in the colonial part of the city, and the beautiful Lake Gardens.

Our next journey was up to Ipoh by train and then on to the coastal area of Lumut, where we had a couple of days beach and pool time to recharge our batteries after a very hectic 12 days. It was lovely here and we enjoyed lovely sunsets over the Island of Pangkor.

We then headed back to Ipoh for a few nights, while we looked around some of the caves. They have these most amazing limestone hills, full of caves which are huge and sprawling and we climbed several hundred steps to reach the top of one for an amazing view. The highlight of Ipoh was the Chinese breakfast place we went to, it's a big room with lots of 'hawker stalls' selling their freshly cooked speciality food. It was an

experience having spicy Prawn Mee, (a fragrant soupy broth with prawns & noodles) for breakfast, but definitely one of the food highlights of the holiday. There was also a stall selling toast and the most amazing freshly baked egg tarts and banana cake, so the children were happy as well!

The next leg of the journey was travelling by bus up into the Cameron Highlands. It was so nice to escape the heat and humidity for a few days and enjoy the coolness of being in the highlands. They grow strawberries and tea there, all set up by British Colonialists decades ago. We visited a tea plantation, a strawberry farm and a butterfly farm, which we all really enjoyed.

Taiping was the next place we visited. We went on a mission to find an old Church, one of the oldest Anglican churches in Malaysia, where a relative of our sister-in-law was married during the colonial days. We managed to find the church, it is very quaint and beautiful and the man tending the grounds got the key for us so we could see inside. Taiping proved to be a good place to visit, so we stayed on an extra day to visit the zoo and look around the Lake Gardens. One of the highlights here was the trip up to Maxwell Hill, an old Colonial hill station used by the Brits to escape the heat and humidity of the plains. It was a great experience as you have to hire a Land Rover to take you up a twisty jungle-clad mountain track, but the view at the top is just amazing – you can see all the way to the Straits of Melacca.

We then boarded another bus to take us to Butterworth on the North West coast of Malaysia, where we caught the ferry over to the Island of Penang. We stayed here for three nights, and visited Georgetown. Georgetown was the port founded by Sir Francis Light in 1722 when he built Fort Cornwallis which would establish Penang as Britain's foremost trading post in 18<sup>th</sup> Century Malaya, and it's still an impressive sight today. Once again there is a lot of Colonial history here, the oldest

Anglican Church in Malaysia is here, and is still a thriving church today, as many of the churches there are – which is great to see in a predominantly Muslim country. Another memorable meal from the many we had was when our hosts in Penang took us to an Indian 'banana leaf' restaurant where we had the most amazing curries – the sour mango curry was a taste explosion that had no resemblance to any mango chutney we had ever tried before, all eaten with our fingers from a banana leaf!

Our next move was to the Island of Langkawi. Unfortunately we missed the last ferry and had an unplanned stop in the town of Alor Setar, where for breakfast we feasted on Dim Sum brought steaming fresh to our table from the various 'hawker sellers'. At the end our table was stacked full of empty plates and we were even more pleased when we got the bill - a very reasonable 7 pounds! We then headed by ferry to Langkawi for a few nights. This is where local people go on holiday and we were hoping for some beach time, but the weather planned against us and we had some very heavy downpours while we were there. We did go on the cable car ride to the top of the mountain on the island, and the view was amazing, until we got swallowed up in the clouds! We left Langkawi by plane back to KL and spent our last day at the Sunway Lagoon swimming resort. The children had a fantastic time and we ended our holiday with the treat of a meal in a Japanese buffet restaurant, never having tried it before. All the Sushi and Japanese food you could eat for only 11 pounds per adult – fantastic!

We had the most amazing adventure, and most importantly the children coped really well with it all, proving that you can take youngsters on an exploring holiday – we would go back tomorrow!!

*Lynne & Nick  
Sandle*



# Craft Fayre



***SLIP END VILLAGE HALL***

***SUNDAY NOVEMBER 27TH***

***10 A.M. TO 3 P.M.***

***IN AID OF KEECH HOSPICE***



For a stall ring Gillian 01582 723109

# The Rising Sun

*The Community Hub*

## Rising Sun Pub

*Real Ale  
Real Food  
Real People!*

*1 Front Street  
Slip End*

**☎ 01582 482354**



## Serving Home Cooked Food

*Weekdays: Lunches 12 noon - 2.30pm  
Dinners 6 - 9pm*

*Saturdays: 12 noon to 6:30pm*

*Sundays: Lunches 12.30 - 6:30pm*

*Mondays 6 - 9pm*

*Malaysian Food Platter £5.50*

*Specials board including Steak & Seafood*

*Sunday Special*

*2 courses £9.50 per person*

*with a choice of roasts*

*Bookings are being taken  
now for Christmas.*

*Menus are available  
at the pub.*



## **RELAX!**

*We have a man that can...*

*Collections, deliveries, removals,  
furniture repair & restoration, flat  
packs, gardening and all manner  
of jobs work undertaken.*

For further information

**CALL Paul Goodaker on 07979057393**

**Can't find the time  
to do all those jobs  
around your home  
and garden?**



## **PARISH COUNCIL**

The initial steps have been taken to begin work on the Neighbourhood Plan. You will recall this is a plan which is jointly being produced by the Parish Councils of Slip End and Caddington to determine what the residents of the two Parishes would like to see happen over the next fifteen years. The plan will consider issues such as housing, jobs, schooling, and community facilities. At the end of the process, residents will decide by means of a referendum whether or not the plan will be adopted and so decide on the future of this area.

This will be an important document, take for instance – housing. This section of the plan will look at what development is needed to keep the Parish sustainable – what is needed for our children as they grow up and leave home and what we need as our present houses become too large as we become older. The plan will enable us to protect the green belt around us from unwanted development. As I understand it, where a Neighbourhood Plan and Core Strategy are in place, future development will take place in accordance with the wishes of the locals. Where no such documents are in place, the default answer to planning requests is **YES**.

To help with the work in producing the plan, a steering group has been set up and will comprise two Parish Councillors from each of the Councils, Slip End and Caddington, and residents from both Parishes. It is thought likely that some of the work will also need to be carried by sub committees. If you would like to be a member of either the steering committee or are interested in being part of a subcommittee then please do contact me as soon as possible. My contact details are at the front of this issue.

In the coming months you will be kept informed of how the plan is progressing both through Parish Council meetings and in reports in these pages.

You will be aware of the new development of flats that is being built next to the Barn Owl, a planning application has been lodged with Luton Borough Council to build approximately a further 250 homes on the strip of land from the Barn Owl down to the Rugby Club. You can see the detail of this at:

[http://www.eplan.luton.gov.uk/PublicAccess/tcd/DcApplication/application\\_searchform.aspx](http://www.eplan.luton.gov.uk/PublicAccess/tcd/DcApplication/application_searchform.aspx)

The planning application number is: No 11/00890/OUT Unfortunately, I cannot see any improvements being made to the two Newlands Road junctions, either at the Barn Owl or the A1081 as part of the application.

Some of the work for the Neighbourhood plan has already been covered in the construction of the Parish Plan which was published in full during the summer. The main issues for the Council to consider as a result of the Plan are speeding, parking and keeping residents informed of what is happening. Work on these issues will begin at our November meeting.

The Community Projects Group will be meeting on 8<sup>th</sup> November in the Social Club at 7.30pm to begin their work on the Parish Plan. Just as you are welcome to join us at the Parish Council Meetings you are also welcome to attend the Projects Group meetings.

During the summer, the Officers at Central Beds have been working hard to help with the insurance and legalities of us buying a gritter jointly with Caddington. The gritter will enable us to treat the Parish roads which would not normally be gritted by Highways. There are still a few details to iron out but hopefully this will all be done before the icy weather sets in.

Arrangements have now been completed and soon we will see the Community Payback scheme at work, clearing litter, cutting the verges and overhangs in all parts of the Parish. The teams will be supervised by the Probation Service at all times.

Finally, a couple of times a year Central Bedfordshire holds a Town & Parish Conference in which Councillors meet to discuss issues of common interest, take part in consultations with Central Beds and receive informative presentations. During the conference last month, the Parishes of Slip End and Caddington were highlighted - not just for being accepted by the government as fore-runners in producing a neighbourhood plan under the forthcoming Localism Bill but also as examples of two Parish Councils working well together, developing new ideas and sharing resources; while at the same time remaining separate to look after the local interests of their own residents.

*Ken Crossett, Chairman*



# Community Projects Group

Working To Improve Your Community

**Please Come Along To Our Next Meeting.  
Everyone Welcome!**

**We Need You To Give Us Your Ideas!**

## **What We Do**

**Village Day - 21st July 2012**

**Good Neighbour Scheme**

**Neighbourhood Watch**

**Provide Funding For Improvements To Your Parish**

**Provide Grants To Local Organisations**

**Implement The Parish Plan**

**Distribute Christmas Gifts**

**Receive Grants From Government & Other Bodies**

**We Have Significant Funds Available!**

**2nd Tuesday Of Every Month**

**7.30pm Slip End Social Club**

**Next Meeting Tuesday 8 November**

Having appeared as part of the Truck Art exhibition earlier in the year at Stockwood Discovery Centre, the museum is looking for a more permanent place for the plaque in its exhibitions.

More information will follow once we hear about where the plaque will be. In the mean time the centre is still a worthwhile place to visit!

### Items for December Issue

**Remember!!!!** There is no Parish News in January hence, where possible, please include any important dates for January with your December copy.

*Editors*

Make a child happy this Christmas!



The 2012 London Olympics are only just around the corner, so we've decided to get into the Olympic spirit as part of this year's Operation Christmas

Child campaign.

Don't forget St Andrew's Cafe Church on 6th November for Shoebox Sunday and the blessing of the boxes. All welcome.

Boxes need to be collected by mid November so they are ready to travel to their destination. If you are interested in making one up for this worthy cause, please ask or see last month's magazine for more details. If you need a leaflet for your own shoebox please contact Sue Briggs, Parish News or St Andrew's.

## Smart Houndz

The smartest houndz in town

### Professional Dog Grooming

All sizes and breeds welcome

Hand stripping, nail clipping scissoring & clipping

Contact

Paul Wager (Caddington) 07875 409933

City and Guilds Level 2 & 3 Qualified

[www.smarthoundz.com](http://www.smarthoundz.com)

[paulmwager@hotmail.com](mailto:paulmwager@hotmail.com)

## Home Renovations

- Kitchens designed & fitted
- Doors hung internal & external
- Bedrooms & bathrooms

*All forms of property maintenance*

CALL Martin Tommey

01582 517105 or 07968 756180



Reduce waste that goes into landfill  
by offering it to your local community for free!

Post your unwanted items on  
<http://uk.groups.yahoo.com/group/FreecycleLuton/>  
then an email is sent to all members  
who make contact to arrange collection.

Everything *must be free*,  
preferably local, although some things can be posted.

## SLIP END VILLAGE HALL

*Your Village Hall*

for Dances, Receptions & Parties

Facilities for the disabled

*For bookings contact*

*Gill Plummer 723109*

*9 Markyate Road, Slip End*



**DON'T FORGET**

# BINGO

**AT THE VILLAGE HALL  
THURSDAYS AT EIGHT**

**Slip End and District Association**



## *MP's Contact details*

*Gavin Shuker's  
local office is located at:  
3 Union Street  
Luton  
LU1 3AN*

Email: [gavin@gavinshuker.org](mailto:gavin@gavinshuker.org)  
Website: [www.gavinshuker.org](http://www.gavinshuker.org)

*For advice surgery appointments  
call 01582 457 774*

## **SLIP END PETER EDWARDS HALL & PLAYING FIELD**

*Ideal for children's & adult's parties, meetings, etc.  
Kitchen facilities with catering service available  
Available for various sports activities  
Excellent sports changing facilities  
Facilities for the Disabled  
For Bookings: ☎ (01582) 767916  
or 07956 463128 (not after 9pm)*

Meet Ruth Gammons & Richard  
Stay to discuss local matters which  
are of  
your concern or interest.

*First Saturday of each month  
10am to 12 noon*

**Central Beds  
Councillor's  
Surgery**  
*Heathfield School  
Caddington*



# NEVILLE FUNERAL SERVICE

*Serving the people of Luton & surrounding areas for 130 years*

*Independent and family owned*

Floral and Memorial Service  
Private Chapels of Rest  
24 hour personal emergency service

☎ 01582 490005

*Neville House  
Marsh Road Leagrave, Luton, LU3 2RZ*

# DIARY - *If you would like your events included, please contact the Editor*

## **November**

- 5th *Meet Central Beds Councillors: Heathfield School Caddington, 10am to noon*  
6th *Café Church at St Andrew's 10.30a.m. — Operation Christmas Child. All welcome*  
8th *Community Projects Group re-launch Slip End Social Club 7:30pm All welcome*  
12th *Ye Olde Christmas Shopping Event Slip End School 4—8pm*  
15th *W.I Old lamps & Country Characters*  
21st *Gardening club meeting at Village Hall from 8pm*  
26th *Nearly New Sale (Baby & Toddler) Village Hal*  
*Children's Christmas Party—Rising Sun 4-6pm*  
*Tennis Club Quiz Night 7:00 for 7:30 Peter Edwards Hall*  
27th *Craft Fayre at Village Hall from 10—3pm in aid of Keech Hospice.*  
30th *Thai Food Buffet Night Rising Sun from 6pm*

## **December**

- 2nd *Meet Central Beds Councillors: Heathfield School Caddington, 10am to noon*  
3rd *Christingle Service St Andrew's 10:30am*  
11th *Bereavement Service St Andrew's Church 3pm*  
13th *Community Projects Group meet at Slip End Social Club 7.30. All welcome!*  
18th *St Andrew's Services - Nativity 10:30am Carols by Candlelight 6pm*

*Remember - Christmas parties and meals available at local pubs  
Contact them for details of menus, cost and times!*

## **Wheelie Bins: see below:-**

- Black Bins & glass:** Put out on Friday 11th & 25th  
**Green and Orange Bins:** Put out on Friday 4th & 18th & 2nd Dec



## ***Items for the next issue to us by 15th November***

Want Parish News delivered monthly? Contact Alan Buttery at 1 Claydown Way (01582 724527), alanjan@buttery400.fsnet.co.uk.

Anything interesting to report about village activities, photos, holidays, etc?  
Please contact us, letters and e-mails are encouraged.

Views expressed by our contributors are not the Editor's own. Articles should be sent by the 15th of the preceding month to Sue Briggs, 4 The Oaks, Slip End or Alison Wilson 23 Claydown Way, Slip End or e-Mail [parishnews@slipend.co.uk](mailto:parishnews@slipend.co.uk)

Advertising queries to Katrina Doubleday 07753 168443 or email [hatsbydoo@btinternet.com](mailto:hatsbydoo@btinternet.com)

Parish News is grateful to our advertisers for their contributions. Please support them.



Lucy & Lynne Sandle on their Malaysian Adventure—see inside for more

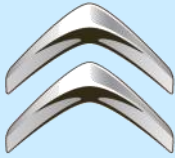


Jade (Chambers) & Jake Harris (above) at their wedding on 1st October at St Andrew's Church with many local friends and family present. It was a glorious sunny day — a rare treat for October! Laura Searle-Barnes (ex Slip Ender, now living in Aliso Viejo, California) married Stephen Douglas on 9th September at Lake Arrowhead in California.



More from Harvest including donations ready to deliver  
Aley Green Methodists  
Autumn Fayre—preserves and cakes galore





**CITROËN**



**SUBARU**



ISO 9001 (2000 revision)

**ISUZU**

- \* **New Cars**
- \* **Used Car Sales**
- \* **Repairs**
- \* **Spares & Service**

# **Slip End Garage Ltd**

**Markyate Road**

**Slip End**

**Service: (01582)  
481600**

**Sales: (01582) 456888**

**Parts: (01582) 411421**

**e-Mail: [info@slipendgarage.co.uk](mailto:info@slipendgarage.co.uk)  
[www.slipendgarage.co.uk](http://www.slipendgarage.co.uk)**