



**FUN DAY FOR THE
SLIP END SOCIAL CLUB**

*KEVIN GETS SOAKED,
SALLY TRANSFORMS FACES,
THE 2 EVIE'S GO FISHING,
LESLEY, JO & LESLEY HELP
AT THE STALLS,
AND TONY & GRAHAM*



**SLIP END ALEY GREEN
PARISH NEWS
PEPPERSTOCK WOODSIDE**

**OCTOBER 2011
75P WHERE SOLD**





Congratulations to the happy couples above. On the left, Linda Bartlett and Dennis Edwards (both previously of Slip End) who were married on the 17th September, and also Scott Cowell to Orawan Phochanatarn (Bo) married on the 24th August.



Happy Birthday greetings to Pam King who celebrated her 80th Birthday on August 25th (pictured with great grand-daughter Bailey) at her line-dancing party in the Village Hall in September. Some old friends (above) were there to join in the fun—Maureen Coker, Josie Worsley with Hilda & May King.

The Parish @ Large

SCHOOLS

Slip End Lower: 720152
Caddington Village School: 726058
Streetfield: 613421
Ashton: 663511
Manshead: 679400

SPORT

Bowling Club: 412506
Tennis: 733253
Darts League: 425323
Football: 418494

HALLS

Village Hall: 723109
Peter Edwards Hall: 767916

COMMUNITY

Brownies: 723109
Beavers: 07956 833488
Cubs: 07972 916626
Scouts: 07780 676861
Fly Tipping (CBC): 0300 300 8000
Friendship Club: 452978
Slip End Assoc: 414796
Mother's Union: 738435
Playgroup: 728865
Toddler Group 405931
Allotments: 736892
FoSELS (PTA):
07787 401937
Women's Institute: 737036
Police: 473211
Aircraft noise: 395382
Airparks: 01582 749495
Water leaks: 0845 7823333

PARISH COUNCILLORS

Stephen Fuell: 417792
stevefuell@f2s.com
Steve Baird 738205
Steven.Baird@cooperindustries.com
Ken Crossett 414168
kencrossett@slipend.co.uk
Janet Crawley: 07752 902070
crawley_janet@yahoo.co.uk
Sarah Minnighan
s.minnighan@btinternet.com
Paul Cooper
paul-cooper@indigo-tiger.com
Keith Holme: 07969 154783
holme@keithjan.fsnet.co.uk

CLERK TO THE PARISH COUNCIL

Peter Segal: 526594
(9am to noon weekdays)
clerk@slipend.co.uk

CENTRAL BEDS COUNCIL: 0300 300 8000

CENTRAL BEDS COUNCILLORS
Richard Stay: 0300 300 4230
Richard.Stay@centralbeds.gov.uk
Ruth Gammons 01582 738398
ruth.gammons@centralbeds.gov.uk

MEMBER OF PARLIAMENT

Gavin Shuker
020 7219 500 or 07505 738666

CHURCHES

St Andrew's Church

Rev. Cathy Pullinger: 725061 Mob 07425 148046
Wardens: Tony Willson 482681
Susan Wiltshire 727477

Aley Green Methodist Church

Minister: Rev Philip Horner
Senior Steward: Ann Meader 733668

SHOPS & SERVICES

At the Crossroads, telephone 401069
Monday to Friday 6.30 to 21.00 Saturday 7.00 to 21.00 - Sunday 7.30 to 21.00
Garage: Slip End Garage, Markyate Road, telephone 456888

Website: slipend.co.uk

GREETINGS FROM CATHY PULLINGER

Hi everyone, last month we wrote about our Mission Statement that includes the sentence: We seek to **live out our Christian faith** in the communities in which we live and work.

We do this in various ways and this autumn we have a bit of a family theme. Families are really important to God. He himself exists in something of a family with the Father, the Son and The Holy Spirit enjoying a loving relationship. He entrusted his son, Jesus, to the care of an ordinary family. Then, when we come into a relationship of faith with God we become his children, so that the church becomes God's family. There is a lovely verse in the Psalms that says: He sets the lonely in families. I know that many have found that to come true when they join the family of the church.

Natural human families are really important to God too. In the Bible they come in all sorts of shapes and sizes, and some of God's chosen leaders came from what would seem to us perhaps to be rather surprising family situations. Moses was brought up in a foster home, with his own mother being paid as a nanny. Jacob's twelve sons had four different mothers, only two of whom were actually Jacob's wives. We see how God provides for a single Mum and her son during a famine, by sending the prophet Elijah to her, and then Jesus himself was brought up by a step-dad. Yet God chose these families to nurture some of his most significant servants.

Whatever the shape and size of your family situation God cares about it and can work in it and through it. The important thing is that our families are filled with love and respect. Indeed there is another lovely little verse in the Bible that is often read at weddings that says: God is love, those who live in love, live in God and God lives in them. In living out our faith we too seek to support family life:

On Thursday and Friday mornings of October half term we are running a children's Holiday Club: Mission Rescue.

We are taking bookings, so see the poster in the Parish News for more details.

On the five Tuesday's in November we are running a Parenting Course: This will be in the Family Room from 8pm – 9.30pm, and we will begin with hot drinks and puddings and a chance to get to know one another. Then there will be a DVD with some talks, interspersed with interviews from parents who have done the course and from parents and children from around the world. There will be a chance to discuss, though no one has to share anything personal with others. There is a guest manual with suggestions that you can take home and talk about. The topics covered are: Building Strong foundations; Meeting our children's needs; Setting boundaries; Teaching healthy relationships; Our values & long term aims. There is no charge for this course. It will have a Christian ethos but is designed for anyone who is interested.

Finally during our harvest celebrations we will also be supporting some desperately poor families in Cambodia: Each year the Bishop of St. Albans has a Harvest Appeal. We are generally so fortunate in this country and as we thank God for his provision for us we like to share some of this with others. This year we will be giving to the Cambodian Hope Organisation (CHO), which seeks to enable families to earn a living so that they can send their children to school. Two years ago, mother of four, Nari, could not afford to feed her children, let alone send them to school. CHO came to her village and equipped her with the knowledge and skills to grow crops to feed her family and earn a living. Nari and her family's life has now been transformed. We are seeking to help other families like her. God Bless you and each member of your family.

Cathy



DATES FOR OCTOBER AT ST ANDREW'S CHURCH

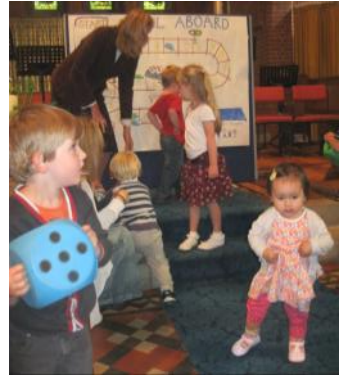
Saturday 1 st :	1.30pm:	Jade Chambers & Jake Harris: Wedding
Sunday 2 nd :	10.30am:	Harvest Festival: Informal Communion
Wednesday 5 th :	10.30am:	Little Stars: Zacchaeus wants to see Jesus
Sunday 9 th :	10.30am:	Morning Praise: Growing on the Job - Band
Tuesday 11 th :	7.45pm:	Prayer Meeting
Wednesday 12 th :	10.30am:	Little Stars: Jesus welcomes little children
Sunday 16 th :	10.30am:	Holy Communion: Ministry for All day
Wednesday 19 th :	10.30am:	Little Stars: Feeding five thousand people
Sunday 23 rd :	10.30am:	Morning Praise: Faith for Ministry -Band
Wednesday 26 th :	10.30am:	Little Stars: Mission Rescue Theme
Thursday 27 th :	10am – 12.30:	Holiday Club: Mission Rescue
Friday 28 th :	10am – 12.30:	Holiday Club: Mission Rescue
Sunday 30 th :	10.30am:	Morning Praise : Mission Rescue Theme



Café Church photos

Cathy leads the children in a Journey game

It's Barnaby's turn to throw the huge dice.



The children make their trucks with biscuit wheels

Café Church 11th September. Where are you on your faith journey? This was the question we considered at our recent café church. To help us think we had cartoon pictures of passengers on a train station, some of the passengers were settled and others were joining the train. While the adults gave thought to this and listened to recounts of personal faith journeys, the children were busy constructing trains with biscuits for wheels! Cathy also played a Journey's game with the children. We also had a short time to remember the terrible events of the 9/11 attacks on America. We concluded the session with a buffet lunch!

St Andrew's Autumn Half term Holiday Club Thursday 27th & Friday 28th October



more games that have been part of our previous holiday clubs.

Book early to avoid disappointment.

Holiday club is most suited to children in school years 1-6, but others, including reception year, are welcome if numbers allow.

We would also wish to advise you that this year we would appreciate a minimum donation of £10 per child but this covers BOTH days

For more details contact either:

Mary (738435), Jill (452539) or Lynne 723029 however further details and consent forms will be distributed on receipt of the registration form

The team look forward to welcoming your child/children!!

This year “Mission Rescue” will be exploring how God set out to rescue Moses and his people. As secret agents we will be going on special missions, cracking codes and many other spy based activities. Plus all the usual games, crafts, DVD's, puppets, fun and even

Mission Rescue registration form 27 & 28/10/11	
<i>Childs full name:</i>	<i>Sex: M/F</i>
<i>Date of birth</i>	<i>School:</i>
Please register my child for the holiday club <i>Parent's/Guardian's signature:</i>	
<i>Parent's/Guardian's full name</i>	
<i>Address:</i>	<i>Phone number:</i>
<i>I give my permission for our details to be entered on the Church data base</i>	<i>Yes/No</i>
<i>I give my permission for my child to appear on group photographs</i>	<i>Yes/No</i>

This month is the best month for laying turf for a new lawn; the turf will settle and root before the winter. Dig the site where you are going to turf, allow to settle then rake the surface into a coarse tilth, lay the turf and mow in the spring.

Most hardy perennials should be planted this month unless the soil is very wet in which case wait for a dry spell, or the soil will compact where trodden on. Cut Dahlias down to about six inches above ground level as soon as the frost blackens the leaves, then dig them up using a fork and try not to damage the tubers, dry in a frost free shed for about a week and plant in shallow trays with just enough peat or ash to cover the tubers and keep slightly damp, shoots will appear next spring.

Chrysanthemums can either be left in the ground to over-winter but do not cut the tops down until spring, or lift the stools, cut the tops down and plant them at the same depth they were growing at in a cold frame or greenhouse and take cuttings in the spring, but do remember to label them before lifting. Gladioli do not fare well if left in the ground to over-winter so lift them about the second week of the month and dry them off thoroughly then cut the stem just above the corm, the roots can be removed as soon as they are dry. Store them in a frost free environment and replant in the spring.

Sweet peas can be sown direct into the ground now or in pots from the middle of the month in a cold greenhouse, plant tulips and Hyacinths this month and into November. Tulips planted earlier may be damaged by frost and may suffer tulip fire disease.

Towards the end of the month plant all types of hardy deciduous trees and shrubs but not in frosty weather or strong winds. Cut out the canes that carried this year's fruit from Blackberries and Loganberries and tie in the new shoots to a wire or frame. Complete the

planting of strawberries this month for fruiting next year and clear all rubbish from established beds. Jam making should be in full swing now especially with the abundant crops of fruits produced this year because of the warm spring.

If you are thinking of taking up an allotment, and there are some available, now is the time to start getting it into order for next spring. If you would like further information about an allotment you can either e-mail me or ring the number for allotments inside the front cover of this magazine and start to grow your own next year.

Don't forget to e-mail me if you have a question at: russell.sprout1@hotmail.co.uk

Russell Sprout

Autumn by Mary Hamrick

Autumn is like an old book:
Marred spines turn mean yellow,
staples rust red-orange.

Every stained page is stressed
by a splat of colour. Rough-red,
like an old tavern,

we become hungry birds
and prepare for fall.

Shape and shadow are candied citron

as lanterns turn bitter yellow. Autumn
is a red fox, a goblet filled with dark wine,
a hot chilli pepper with smoky eyes.

Pressed leaves take in the colours
of seafood paella and saffron; these leaves
are like death, climaxing with a smile.

Autumn: Her dress is a net of mussels;
dark shelled, it covers up
summer's weather-beaten body.

So pull out your boots
and stand on an aged, wood floor
like an evergreen.

GRADUATES

Stuart Baird from Woodside gained a 2.2 in Criminology at Coventry University. His graduation ceremony will take place in November.

(Will hopefully have a graduation photo later)

SLIP END TODDLER GROUP

The Toddler Group has a new leader – Kaz is one of the Playgroup staff and well qualified to lead the group. She has some plans and new ideas to bring to the sessions and would love to see you there.

The group is for all children from birth to school age with their parents, carers or grand-parents. It is a 'drop-in' group with activities for the children and a welcome snack for all ages. Toddler Group is open on Tuesday afternoons during school term times in the Village Hall. Entrance is through the door from the car park at the back of the hall. The cost is £2 for your first child and £1 for every subsequent child and for babies under one year old.

If you would like more information or someone to meet and introduce you on the first visit, call Kaz on 01582 724215 or Jill on 01582 728865.

PLAYGROUP

The return to Playgroup after the summer break has brought us 5 new children who are settling in nicely.

Since the start of the term we have harvested our onions and green beans from our garden – the onions are still drying but we have sampled the beans! We have some pumpkins growing well and hope they will be ready for the end of the month.

We are making plans for the term with an autumn theme and hope to be collecting some of the beautifully coloured leaves and of course the conkers and acorns as they are ready. We hope to also include a trip to Stockwood Park.

We will have our AGM this term and hope to swell the numbers on our committee for both the groups to help us run the groups and fund-raise.

Jill Acton

To keep track of latest local issues, events, etc., visit

www.slipend.co.uk

Our website contains lots of information covering all activities and groups in the Parish. Web mistress Sarah Minnighan & Webmaster Peter King have been working hard to update information and improve presentation.

Charisma Hair & Beauty Salon

Ladies
&
Gentlemen

☎ 722801



Opening Times

Mon: 9.15-2.45
Tues: 9-5
Wed: Closed
Thurs: 9-6
Fri: 9-7
Sat: 8-3

Air-conditioned - Easy Parking - Chiropody
Remedial Massage - Indian Head Massage
43B Elm Avenue, Caddington



Catherine Hazel Crafts

Handmade Doorstops,
Bunting & Gifts

Take a look at ...
Catherine-hazel-crafts.co.uk

Call 07962 621967



**Body Image
Fashion Jewellery**

at

Woodside Animal Farm

Tel: 07715565958

Cara Kennedy CK-13@Live.co.uk





SLIP END SOCIAL CLUB

New Street, Slip End

☎ 415804

Live Sky Sports on the Big Screen - Pool - Darts - Crib - Dominoes
Bingo Wednesdays; Saturday Night Entertainment every fortnight
Golf Society

*Be social
make it
your local!*

Opening times:

Weekdays: 4.00 to 11pm

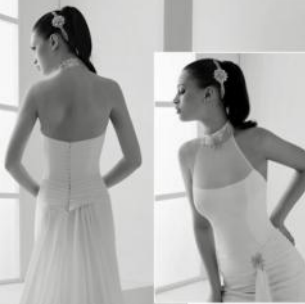
Saturdays: 12 noon to 12 midnight

Sundays: 12 noon to 11pm

*New members
& their families
welcome!*

Usual Club prices!

Mignonette



**Specialists in
Bridal Gowns
Bridesmaids
1st Communion
Prom Wear**

Alterations on all garments

**Mignonette
Beauty**

**Waxing
Tanning
Nails (gel)
Nails (acrylic)
Facials**

Semi-Permanent make-up

**The Chapel, 38a Church Road,
Slip End, Luton, Bedfordshire LU1 4BJ
01582 402345**

**info@mignonette.com
www.mignonette.com**

SAFE AT HOME DAY

Saturday 22 October 10am - 4pm

Community Projects Group venture

Cllr Fuell will be re-launching the Neighbourhood Watch Scheme in the Parish at the Village Hall. This was one of the projects highlighted in the Parish Plan Questionnaire and will be one of the first tasks in which the Community Group and residents can get involved. It is hoped that the full Parish Plan will be available for inspection.

There will be representatives of :-

The Police The local police force doing number plate security and mobile phone and other object ID marking.

Manpad Representatives of the Manpad scheme will be on hand to talk about the anti-terrorist scheme and how residents can help keep our airport safe.

The Fire Service The local fire engine and team will be on hand to talk about prevention of fire in the home and fire hazards.

Ambulance and medical services It is hope that a Paramedic will be on site to show what services they provide. There will also be representatives from the local air-ambulance service at the hall.

Steve Fuell's Neighbourhood Watch stand with literature and sign up papers

Teas and coffee will be available as well as a raffle to raise funds for the Community Group. Please support your local emergency services and come along.

SLIP END POLICE REPORT AUGUST 2011

During the course of August there were 4 reported Crimes. Please see below.

ANTI SOCIAL BEHAVIOUR

08/08/2011 Anti-Social Behaviour - Nuisance Crawley Close

21/08/2011 Anti-Social Behaviour - Nuisance Little Meadow Caravan Park

23/08/2011 Anti-Social Behaviour - Nuisance Mancroft Road

Anti social behaviour has seen a dramatic decrease within all of the villages recently.

CRIME

10/08/2011 - THEFT FROM MOTOR VEHICLE Markyate Road, Luton

13/08/2011 - CRIMINAL DAMAGE - TO VEHICLES Front Street, Luton

16/08/2011 Theft etc - MISCELLANEOUS THEFTS NOT CLASSIFIED ELSEWHERE Woodside Road, Luton

31/08/2011 - THEFT FROM MOTOR VEHICLE Grove Road, Luton

There has been a number of Thefts from vehicles in the rural areas of Bedfordshire and we ask residents and walkers to be vigilant to any suspicious activity in these areas. We also advise members of the community not to leave vehicles unattended and not to leave property on show in vehicles; this includes Satellite Navigation systems, Laptops, Handbags, Sunglasses, Money, Coats and audio equipment. Patrols have been increased in areas of recent thefts and stop checks are being carried out on any suspicious vehicles and persons in these areas.

Operation Wharton – This operation will target nuisance vehicles and motorcycles in the Dunstable, Houghton Regis and Rural area. This operation is ongoing and a number of vehicles have been seized so far.

Operation Yaddle – This operation will target nuisance youths and underage drinking. There will be a dedicated team allocated to this operation on Friday and Saturday nights. This operation is ongoing and a number of youths have been stopped and spoken to, tobacco and alcohol has been confiscated off underage youths in Slip End in August.

U.E.S

Utility Engineering Services



**Power
Failure?**



*All electrical works carried out including:
24hr call-out, rewires,
testing, extra sockets etc.*

Contact Paul

☎ 01582 450800



BIO SCULPTURE NAIL TECHNICIAN

The perfect solution
for beautiful hands.
Based in Slip End.

**Contact Rachel
07870833080**

Rachel.gilligan@ntlworld.com

10% discount with this advert!

PH SERVICES

CAR & MOTORCYCLE REPAIRS

**PHILIP HALL
MECHANIC**



- * Servicing
- * MOT
- * Tyres
- * Bodywork
- * Computer Diagnostics

**UNIT 3
MANOR ROAD GARAGE
CADDINGTON**

**Office: 01582 722251
Mobile: 07769 734417**

e-Mail: phillhall1200@btinternet.com
Damaged bikes wanted for Cash
Nationwide collection

**10% Discount
with this voucher!**



Painting & Decorating
PETE the PAINTER
for all your decorating needs

- Laminated Flooring
- Carpentry Work undertaken
- Tiling - Floors & Walls
- Over 20 years experience

4 Elm Avenue Caddington

Call for a free Quotation

Tel: 01582 453611

Mobile: 07971 348485



PILATES

'Intelligent Exercise'

A method of exercise
and physical movement
designed to stretch body.

**Group sessions at
Slip End School**

**For information
call Andrea on
01582 458886**



Stoten Gillam

chartered accountants

chartered tax advisers

**PRACTICAL SOLUTIONS FOR
GROWING BUSINESSES**

01582 608601

Alban House
99 High Street South
Dunstable LU6 3SF

www.stotengillam.co.uk
enquiries@stotengillam.co.uk



ACCOUNTS
TAXATION
AUDITS
FINANCIAL
ADVICE
PAYROLL
COMPUTER SERVICES



Scissors

Mobile Hairdresser

Experienced, London
trained hairdresser,
now available locally.

**Call Dorothy
tel: (01582) 726410
Mobile: 07563 764676**

OPERATION CHRISTMAS CHILD

The 2012 London Olympics are only just around the corner, so we've decided to get into the Olympic spirit as part of this year's Operation Christmas Child campaign.



How? Through sports-themed shoeboxes...

As well as giving you the chance to do something a bit different with your shoeboxes, this is also your chance to send a few sporty items out to needy children in our world – children who might otherwise not have the chance to experience the joy of sport for themselves.

Make your shoebox sports-themed
There are several ways you can give your shoebox an Olympic twist this year...

GIFTS: Along with gifts you would usually send, you might want to include a tennis ball, skipping rope, baseball hat, small football, inflatable beach ball, stop watch, sweat bands, toy medals or other sports-related gift that would bring a smile to a child!

BOX: You could even decorate your shoebox with Olympic stickers and drawings.

MESSAGE: You might want to add a special message to your child, stating that the shoebox has come from the home of the next Olympics and that you hope they enjoy the sports items you've included in your box.

We are holding a special Operation Christmas Child Café Church at St Andrew's in November where the congregation will be making up their own boxes—so why not come along and join in the fun. The date will be November 6th and all are welcome.

For the past 18 years Operation Christmas Child has been sending shoeboxes to

Belarus. Last year we sent 33 loads of shoeboxes to the country for distributing to orphanages, hospitals and poor homes. Here is a letter from the Baptist church in Tekhteen, Mogilev region, Belarus who helped distribute the shoeboxes. It shows the high regard that they have for the boxes and the difficulties they have in the country.

Dear Friends in Samaritan's Purse and OCC partners!

From the bottom of our hearts we thank you for your care for Belarusian children. We appreciate all your hard work in collecting gift boxes, your offerings with finances, time and efforts. You deliver Love in a Box! And you in the UK give us a chance to pass God's love on to needy ones in Belarus.

We are a small Baptist church in the rural area of East Belarus, close to the Chernobyl zone. There are many forgotten and affected villages around us. There is a high level of unemployment, drinking parents, neglected kids – all this is our daily reality. Many parents don't pay much attention to their kids, and they cannot afford to buy gifts for them. And OCC shoeboxes are like a bright light in darkness!

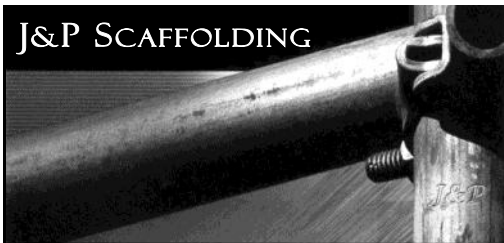
With your gift boxes we can and do organise many special OCC events in our church and schools. Many children come to our Christmas performances and later to our Sunday school even from far away. OCC helps us to open hearts and open doors!

If you need a leaflet for your own shoebox please contact Parish News or St Andrew's.

Susan Briggs



J&P SCAFFOLDING



Phil Johnson

Mobile: 07720 846963 Tel/Fax: 01582 429106

T. HUSSEY

TONY HUSSEY PLASTERING SERVICES

Mobile: 07730 744174

E-Mail: tonyhussy@aol.com



CONSTRUCTION LTD

e-Mail: srccs.construction@yahoo.co.uk

Contact
Sheldon Stanbrook
39 Front Street
Slip End
LU1 4BD

Tel: 01582 730549
Mob: 07790 583118

*Do you want to advertise
In this space?*

*Contact Katrina on 07753
168443*

Or hatsbydoo@btinternet.com

Chiropodist

State Registered

Home visits

Evening & weekend appointments

Keith Appleby BSc (Hons), MChS, SRCh

Telephone: 01582 873136



RLS AUTO REPAIRS

GENERAL REPAIRS, SERVICING,
MOT & FAILURES, DIAGNOSTICS
GEARBOXES & CLUTCHES,

RUSSELL (DAVE) STANBROOK

80 MANOR ROAD
CADDINGTON
LU1 4HQ

07976 584949

rlsautorepairs@hotmail.co.uk



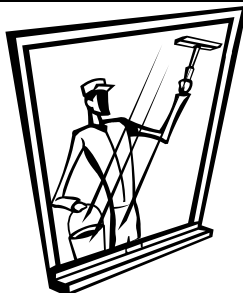
Pastel Painting Artist Portrait



Dogs a Speciality - Reasonable Rates

Contact: Bea Malsbury (Slip End)

Tel: 01582 488489



Need a reliable Window & Carpet Cleaner?

*We operate in the
Slip End area*

For free quotation

contact us on

01462 629302

07970 406 926

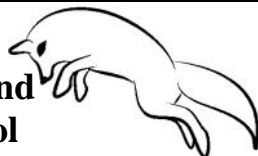
DOMESTIC APPLIANCE REPAIRS

Washing Machines, Dishwashers,
Driers, Cookers, Microwaves,
Fridges & Storage Heaters

Barrie Acton

**Slip End (01582) 728865
or Mobile 07802 723160**

A. McClelland Pest Control



For fast response call
Mobile 0777 494 8415
or office 01582 872158

e-Mail: a.mcclelland_pestcontrol@hotmail.co.uk

Richard Gurney & Son Contracting Services

Longview, Luton Road, Markyate

*Tree Surgeons & Fencing Specialists
Hedge Trimming & Tree-stump removal
Wood Chippings (good for mulching)
Logs for Sale*

☎ (01582) 840407

Established 1970 - Fully Insured

REFLEXOLOGY

This complementary therapy works on the feet to aid healing to the whole person. It helps us to cope on physical, mental and emotional levels, encouraging healing and maintaining health.

Reflexology may aid:

*Stress-related conditions • Back Pain • Migraine
Fertility • Sleep disorders • Hormonal Imbalances*

www.Starlighttherapy.weebly.com

Call Lyn on 01582457815 or 07926367810



PROBLEMS WITH YOUR PC OR APPLE-MAC?



*For expert advice & trouble shooting
call Tony Glynos on 458353
tony.glynos@talk21.com*

THE FRAME SMITH

Beautiful Bespoke Picture Framing

*Free local service in your home with free collection & delivery
or visit me by appointment at my workshop in Slip End*

Free Estimates & Advice
Call Anthony Smith
The Frame Smith

Daytime: 07976 830906 After 6pm: 01582 424516



INKERMAN

BUILDING & ROOFING Co

EXTENSIONS - CONVERSIONS- RENOVATIONS

www.inkermanbuilding.co.uk

*The Complete Design,
Plan-completion Service included*

- ✓ New Build ✓ Restoration
- ✓ Electrical Work & Plumbing
- ✓ All General Building Work
- ✓ Flat & Pitched Roofing
- ✓ Brickwork Contractors
- ✓ Painting & Decorating
- ✓ Insurance Work



☎ 01727 835702 (office)

☎ 07774 955255 (mobile)

01582 876509 (home tel/fax)

*Do you want to advertise
in this space?*

*Contact Katrina on 07753 168443
hatsbydoo@btinternet.com*

JOHN SAUNDERS & SON Incorporating E. Franklin & Co.

FUNERAL DIRECTORS

48 Duke Street, High Town, Luton



☎ 731696

Day & Night Service

Monumental Services
Members N.A.F.D.

Prepaid Funeral Plans available



Thanks to funding assistance from the Community Projects Group, the Slip End Tennis Club has been able to install floodlights on its courts at the Playing Field. Four members of the club braved a slightly wet evening on Monday 5th September to have a game and test them out. The light allowed them to have a brief game, stopped by the rain rather than by the lack of light. There was enough light to take photos of players in action too.

The new lights will extend the season which will enable teams to play home matches during more of the summer months, continuing play after the light begins to fade. The lights will also allow Coach, Sally Parry, to run her Friday evening junior coaching sessions into the winter months.



Anyone who would like to know more about the club should contact Peter Smith on 733253.

Advance Notice

TENNIS CLUB QUIZ NIGHT
SAT 26 NOV 7.30pm
Peter Edwards Hall

More information next Month

Nick Helm: "I needed a password eight characters long so I picked Snow White and the Seven Dwarves."

Tim Vine: "Crime in multi-storey car parks. That is wrong on so many different levels."

Hannibal Buress: "People say 'I'm taking it one day at a time'. You know what? So is everybody. That's how time works."

Matt Kirshen: "I was playing chess with my friend and he said, 'Let's make this interesting'. So we stopped playing chess."

Sarah Millican: "My mother told me, you don't have to put anything in your mouth you don't want to. Then she made me eat broccoli, which felt like double standards."

Alan Sharp: "I was in a band which we called The Prevention, because we hoped people would say we were better than The Cure."

High Elms Tree Surgery Ltd

SHAUN MORRIS

Specialist in: ~

- FELLING
- LOPPING
- SHAPING
- STUMP REMOVAL
- HEDGES TRIMMED, SHAPED & REMOVED
- DEAD WOODING
- REDUCTIONS
- CROWN LIFTING
- WOOD CHIPPINGS
- LOGS DELIVERED
- TREE REPORTS
- TREE SURVEY INSPECTIONS
- T.P.O. & PLANNING APPLICATIONS

• 24 HOUR EMERGENCY SERVICE

• No Job too small • Free Estimates & Advice

Fully Insured to £5 Million

Approved by Local Authorities

Tel: 01582 840144 Mobile: 07939 623675

www.highelmstreesurgery.co.uk

Old Beechwood, Cheverells Green, Markyate. AL3 8AB

Roast beef and all the trimmings followed by a tasty selection of sweets enjoyed by a large attendance at the Lunch Club's sixth anniversary lunch on Wednesday 14th September. The toast 'The Club' was proposed by Ken Cameron and followed by a favourite hymn 'Shine Jesus Shine'.

Audrey Robinson, who attended the first ever lunch and most of those in-between, was 80 and the occasion was celebrated with a large card and a bouquet of flowers plus the usual Happy Birthday to You. During the interval and in-between courses, Ken and Tina Hayton did a Daisy Daisy routine which didn't actually prove Britain has got talent and the event ended with a lusty rendition of Jerusalem. Sheila Lathwell was as usual on the piano.

The next Lunch is on Wednesday October 12th 12.30 for 1pm Lasagne and vegetables, pudding and tea for £3.00

FHM and friends enjoyed a grand coach outing in Clacton on 13th August, the weather was very good as it seems were the fish and chips. After walking around the shops all were able to rest and admire the marvellous gardens near the sea front.

The annual Macmillan Coffee Morning will take place on Saturday 8th October, 11am to 2pm. This year will be a three churches event, St Johns, World Wide Church and FHM joining together. There will be various stalls, homemade cakes, preserves, bric a brac, treasure hunt, books etc. all in aid of a very good cause.

Details of above and future events from Ken Cameron.

07852424628

khubsurat1@xlnbb.co.uk



The Fun Day at the Social Club in late August was very well attended and there were lots of fun activities for the children and adults to take part in. Poor Kevin got well and truly soaked when he offered to put his head through the giant frog, as seen on the front page, and people queued to throw wet sponges at him! (actually not sure he offered?).

Sally did a great job with her face painting and there were a lot of pretty butterflies running around, seen here with Evie (1) having her face painted.



Tony and Graham did an excellent job on the barbecue and had no shortage of customers for chicken, hot dogs and burgers. The Deal or No Deal cards in the marquee had a steady



stream of participants, likewise the Tombola for young and old and little Evie (2) above did not understand why she could not keep the ducks she fished out!

There was also a band in the evening and at the end of the day the grand total of £780 had been raised towards the Children's Christmas Party so well done to everyone who was helped at the event or attended and spent their money.

ALEY GREEN METHODIST CHURCH

Services and Diary dates for October

Sunday 2nd

11.00am Morning Service - Rev Bob Forrest
11.00am Sunday School (Communion)

Tuesday 4th

7.30pm Bible Study - Rev Bob Forrest

Saturday 8th

7.15pm Ecumenical Harvest Supper held
at the Baptist Church

Sunday 9th

11.00am Morning Service - Martin Wallis
11.00am Sunday School

Tuesday 11th

10.00am/12.00pm 'Cakes & Company'

Saturday 15th

12.00 noon Autumn Fayre

Sunday 23rd

11.00am Morning Service - Geoff Bocutt
11.00am Sunday School

Monday 24th

7.30pm Fellowship Meeting - Mike Bull

Wednesday 26th

7.30pm Coffee Evening
In aid of Keech Hospice Care

Sunday 30th

11.00am Morning Service - Mr Goodwin
11.00am Sunday School

~~~~~

It was with great sorrow that we said farewell to the Richardson family who moved to York on the 31st August. Lisa & David attended our Sunday School when they were little and went on to be teachers and youth workers in the Luton Circuit. Last year they helped to set up our Two by Two club for children over eight years, which continues to grow in numbers.

Harry and Amy were popular members of both the Sunday School and 2x2 club and will be missed by the other children. Our Sunday School reopened on the 3rd of September and it was lovely to see all the children. After Church (in spite of the rain!) we held our Sunday School Barbecue. Fortunately it did brighten up later in the afternoon enabling the children to play in the garden.

Our RAGS walking group took part in the 'Bike 'n Hike' in aid of the Beds & Herts Churches Heritage Trust. We planned two routes, six people chose the shorter one and five brave souls tackled the longer one calling at the local churches on the way. We all met up back at the Church for a hearty lunch prepared and served by Lorna Alan & Lorraine. Meanwhile Erin and Mike Smith cycled a total of 30 miles visiting 25 churches. We hope we have raised a good amount of money towards the charity.

The Harvest Festival service was very well supported with freshly picked vegetables, fruit and flowers (some kindly given to us by fellow Caddington allotment holders), together with tinned and packet foods which weighed the table down. The Reverend Phil Horner led our service and we joined in singing all the traditional Harvest hymns and a collection was taken for the Methodist Relief and Development Fund. The following day was our Harvest Auction, Carole Bull was our auctioneer and she worked her way through the produce, amid great fun and laughter. £240 was raised for Water Aid.

We do hope you will pop along to our Autumn Fayre, lunch will be served from midday, Jacket Potatoes with various fillings, Pie Mash & Vegetables, puddings cakes etc plus all the fun of the Fayre.

A warm welcome awaits - we look forward to seeing you soon.

*With love & prayers from all at Aley Green  
Methodist Church* *Ann Meader*

---

**CADDINGTON W.I.**

---

We have been kept busy during the summer. At our July meeting we had a talk on 'Well, I never knew That'. Paul Heley gave us the reason behind many of the old fashioned sayings we still use today.

During August we went on a Group coach trip to Essex visiting smugglers haunts in the area. We also had an extremely interesting talk from Martin Towsey on the Woburn Abbey Gardens. Martin started working with the Gardens when he was very young and has worked his way up to Manager.

If you are looking for a local trip out do go and visit the Gardens, take a picnic and have a good walk around. It will be a very interesting day. September has arrived and our members are looking forward to our Birthday Party when we invite other group members and provide supper and entertainment for us all. It should be a good evening.

We meet on the third Tuesday in each month at the Baptist Church Hall in Dunstable Road at 7.30 p.m. You will be very welcome.

Sorry my report is shortened but had a really busy time preparing for my wedding on 17th September. I will write more next month

*Linda Edwards*



*Linda with new husband Dennis join some of the W.I members who went along to the wedding.*

Diary dates to note please:

18th October The Challenge of a Fund Raising Trip to Nepal by Sandra Lawes

15th November Old Lamps & Country Characters by Charles Porter

20th December Christmas Celebration

---

**LITTLE STARS AT ST ANDREW'S CHURCH**

---

Little Stars have recommenced meeting in the family room and have plenty of space for any new mums to come and join our informal activities. The children who recently moved up to school appear to have settled in well and are looking forward to coming in the half-term holiday back to St Andrews, as many have already booked their place at the Holiday Club!



*Just some of the children at the recent Café Church enjoying themselves*

**If you want to get fit in time for Christmas**

**Don't forget -**

**Zumba Classes**



**Every Monday and Thursday at Slip End School**

**from 7.30—8.30pm £4 a session**

# **YE OLDE CHRISTMAS SHOPPING EVENT**

**CAROL SINGERS**

**HOT FOOD**

**ENTERTAINMENT**

**RAFFLE**



**MULLED WINE**

**WARM MINCE PIE**

**ROASTED  
CHESTNUTS**



**SATURDAY NOVEMBER 12TH  
4 TIL 8PM  
SLIP END LOWER SCHOOL**



**AN OLDE WORLD EXPERIENCE, IN THEMED DRESS**

**WHILST YOU BROWSE THROUGH OUR EXTENSIVE STALLS  
TO FIND THAT PERFECT GIFT FOR  
THAT SPECIAL SOMEONE.**

**ITS THE PERFECT EXCUSE TO WRAP UP WARM.**

(More info to follow, if you are interested in a stall please contact Naomi Negus on 07787 401937 or fundraising@slipend.co.uk)



### Rising Sun

We have introduced bar snack suppers on Fridays and cheese and biscuits platter on Sundays which have been a tremendous success. It's nice to know that these free bar snacks are very much appreciated and supported by our customers.

Forthcoming events for October as follows:

**Saturday 8th October:** ANGEL'S TUX AND TAILS an evening of elegant formal wear with cocktails, finger buffet and power ballad disco in aid of cystic fibrosis. 8pm till late. Ticket @£10.00 per person to include 1st cocktail and buffet

**Saturday 22nd October:** First taste banquet evening has been postponed till November due to unforeseen circumstances

**Sunday 23rd October:** LIVE MUSIC afternoon with RESTLESS WILF. A 5-piece band act providing music from the 60's right through to present. 3pm till 7pm- all welcome!!

**Saturday 29th October:** Children's Halloween party @ £5.00 per child to include entertainment and high tea £20.00 Toys R Us vouchers to best fancy-dressed child

**The Rising Sun's Christmas day lunch** should read 12.30pm to 5.00pm and 2.00pm to 5.00pm seating's. It was printed incorrectly in the last issue and has caused some confusion for some potential customers. **Please note:-** For pre-Christmas parties of 8 revellers or more we will provide a free finger buffet (booking required please)

That's all for now I think, apart from a reminder of our new finer menu that has been introduced in October, and with a different style of service and presentation featuring a lot of local produce and freshly cooked to order in our kitchen. A traditional bar and light snack menu will also be available.

### Frog & Rhubarb

On Saturday 17<sup>th</sup> September the Frog held its annual **Race Night** in aid of FoSELS at Slip End Lower School. The pub was buzzing with excitement as the punters cheered on their horses in the eight races. There were winners and losers on the night but the biggest winner was Slip End School who received £415 proceeds from the night.

Forthcoming Events

**£2.50 Drinks Party Night** returns to the Frog on Saturday 29 October. There is no better way to cheer up a cold October night than by making the most of this amazing value night. Entry is free and all drinks will be £2.50 from 9pm until midnight. There will be a disco to ensure this is yet another fantastic night at the Frog.

Christmas may still seem a long way away but now is the best time to start planning your festivities. The team at the Frog has put together a premier Christmas party menu with three courses £20 or five courses £22. Menus:-[www.frogandrhubarb.co.uk](http://www.frogandrhubarb.co.uk) and pub.

You can be guaranteed the very best quality food prepared by the pub's team of chefs on Christmas Day. The five course gala dinner has an amazing choice of dishes including the traditional favourites and is only £50. Let the whole family have a relaxing day while someone else does all the work. Space is very limited and filling up fast so book soon!

Fantastic Value Offers @ The Frog

The Frog & Rhubarb now has the Cheapest Beer In The Area! Buy 7 pints and get the 8th free giving you these fantastic prices per pint. No time limit, so no need to drink them all at once, unless you want to!

**2 Courses For £10**, Sunday through Thursday from 5pm until 10pm. There is a huge choice of dishes to choose from and for those with a really big appetite, there is the option of have 3 courses for just £13.

The Frog & Rhubarb has a computer with Internet access, which is free for all customers to use. If you don't have use of a computer at home, why not make use of this facility while enjoying a coffee or pint. We also have free WiFi for use by those with laptops or smart phones.

Take away food is available from the Frog every day 12pm – 10pm. There is a fantastic range of dishes at chip shop prices. You can also get drinks to takeaway at extremely reasonable prices. Up to date information can be found on the pubs website [www.frogandrhubarb.co.uk](http://www.frogandrhubarb.co.uk)

### **The Plough**

Big Congratulations to David Jarvis who won a free holiday for his Elvis performance in a talent contest by singing 'Cant help falling in love with you' while on holiday in Norfolk.

Wishing a Happy Birthday to Rose Catlin, who celebrated her birthday at The Plough with her family. They all enjoyed a Sunday Roast and all had a great time.

Also wishing Mrs Hayward a very Happy 70<sup>th</sup> Birthday, who also celebrated here with all her family with a meal and birthday celebrations.

Mr and Mrs Bucknell Glen hired out the marquee for their daughters christening. Their guests enjoyed a buffet in the marquee for 75 people. It was a lovely day despite the bad summer.

Congratulations to Cameron Hay, son of the Landlord Doug Hay on his GCSE results. Plenty of A\* and A's. Wishing him all the best at six form college at Manshead.

With the new season of Dominos and Darts starting soon, we are wishing our teams the best of luck and fingers crossed they bring some more trophies home next year!!

We are now taking bookings for Christmas Parties. Call in for our menu!! We cater for all occasions, birthdays, christenings,

funerals etc. Please ask for more details. Visit our Website for more details [www.theploughwoodside.co.uk](http://www.theploughwoodside.co.uk)

---

### **DAVE JARVIS — LOCAL CELEBRITY**

---

As featured on our inside back cover, and in the Plough News, Dave did indeed win a talent contest whilst on holiday in Scatby near Caister, with wife Judy, when he entertained the other holiday makers with his Elvis impersonation and was chosen as the winner of the Talent Contest that week. Dave and Judy will return in a year for a free expenses paid holiday with two friends where he will perform in the Grand Finale with all this years winners. Dave, who lives in Summer Street, and has three grandchildren also won a trophy (pictured below), a medal and a certificate. *Good luck Dave in the Final.*



## 101 Non-Emergency Number

Bedfordshire Police have launched a new number providing people with a new way to get in touch about non-emergency issues. 101 is now the number to call Bedfordshire Police when it is less urgent than 999

As well as making the police more accessible to communities, it is intended that 101 will reduce the number of inappropriate 999 calls. There will be a single flat charge of 15p per call, regardless of the duration, time of day, mobile or landline. You should call 101 to report crime and other concerns that do not require an emergency response. For example:

- Stolen cars
- If you suspect drug dealing/taking
- To give us information about local crime
- To speak to your Local Policing Team

*In an emergency, always call 999 when you need an immediate response, For example:*

- Because a crime is in progress
- Someone suspected of a crime is nearby
- When there is danger to life
- When violence is being used or threatened

### 101 will not:

- Change the way in which we respond to non emergency calls
- Connect people to a large national call centre
- Result in calls receiving a lower priority than if 999 had been called for a non emergency issue

### 101 should not be used to report:

- Fly tipping
- Noise pollution
- Stray dogs

These should initially be reported to your local council as follows:

- Central Bedfordshire Council: 0300 300 8000
- Luton Borough Council: 01582 546000

---

**TIME FLIES**

---

Whatever happened to Monday?  
it simply melted away  
and every week seems to vanish  
it's due to age, they say!  
I remember places I have been  
and faces I used to know,  
but Tuesday, Wednesday and Thursday  
gone like the melted snow.  
So then it's Friday once again,  
with the weekend drawing near,  
and Sunday can be wonderful,  
or boring, dull and drear.  
and so the months keep slipping by  
and the years will not relent,  
Whatever happened to Monday?  
it simply came and went!

by Iris Hesselden

*With apples so  
abundant this  
Autumn I found  
this little apple  
poem -*



A bright and blessed thing to see  
the lovely laden apple tree.  
From the lowest branches I take  
four apples for my childhoods sake:  
One that I may remember still  
the Spring's first yellow daffodil;  
One for high summer; bathed in light  
the great elms quiver in my sight;  
One for the harvest, Autumn crown  
when rough hands lay the sickles down;  
and one for when the winter rain  
will sweep the upland and the plain.  
My lovely fruitful apple tree  
spells out the seasons — just for me.



by Glynfab John





# The Plough

Woodside, Nr Slip End  
01582 720923

Family Pub, Dining Room  
Garden & Play area

Lunches & Evening Meals  
Booking Advisable

Our restaurant is generally closed on Sunday  
& Monday evenings unless bookings are made.

Now taking bookings Christmas  
Menu out now

**Traditional Sunday Roasts**  
Incl Vegetarian & Children's Roasts

**Happy Hour Menu!**  
From £4.25 Main meal  
Tues-Fri 5-7pm

**Join Our Discount Club!!**  
Get 25% off after joining first time  
thereafter 15% off our Restaurant Menu!!

Car Parking, Disabled facilities,  
and Baby Changing facilities

**Frog &  
Rhubarb**  
country pub & dining

**01582  
452722**

**2  
Courses  
£10**

*3 Courses £13*  
*Sun-Thurs, 5pm-10pm*



**£2.72**  
a pint\*

**£2.89**  
a pint\*



**£2.89**  
a pint\*

**£2.89**  
a pint\*



Buy 7 Pints Of Carling, Fosters, Blackthorn Or I.P.A.  
And Receive Your Eighth Pint Free

\*Price per pint of seven paid pints and one free. Not valid on discount nights or special events.

# Craft Fayre



***SLIP END VILLAGE HALL***

***SUNDAY NOVEMBER 27TH***

***10 A.M. TO 3 P.M.***

***IN AID OF KEECH HOSPICE***



For a stall ring Gillian 01582 723109



# The Rising Sun

*The Community Hub*



## Rising Sun Pub

*Real Ale  
Real Food  
Real People!*

**1 Front Street  
Slip End**

**☎ 01582 482354**

## Value Home Cooked Food

*Weekdays: Lunches 12 noon - 2.30pm  
Dinners 6 - 9pm*

*Saturdays: 12 noon to 7pm*

*Sundays: Lunches 12.30 - 7pm*

*Mondays 6 - 9pm*

*Malaysian Food Platter just £5!*

*Specials board including Steak & Seafood*

*Sunday Special*

*2 course Sunday Roast £8.00 per person  
with a choice of roasts plus free dessert!*



## ***RELAX!***

***We have a man that can...***

**Collections, deliveries, removals,  
furniture repair & restoration, flat  
packs, gardening and all manner  
of jobs work undertaken.**

For further information

**CALL Paul Goodaker on 07979057393**

**Can't find the time  
to do all those jobs  
around your home  
and garden?**



In July we took a trip to Southend for the day. Although it was very windy it was not cold.

During August we travelled to Eastbourne and the day was sunshine all the way. Keith our driver, took us via the coastal way and the view of Eastbourne was great. In September we are hoping to go to Cambridge—so quite a variety of trips during the summer.

If you are a pensioner and looking for something local to do, why not come along and join us at the Village Hall on Thursday afternoons from 2—4pm. It's only £10 a year for membership and 40p for tea and biscuits every week. For any more information please ring Pam on 01582 452978.



Happy 80th Pam from all your Friendship friends, Line Dancing friends and Parish News. Hope you had a great birthday.



*And some of the girls show how it's done!*

At the meeting on 19 Sept. Rosemary gave members details of the trip made to Hitchin Lavender Farm. There was a most impressive display of lavender and visitors could walk along the rows, cut lavender and place in bag provided. It was not necessary to purchase an entrance ticket to visit the cafe or gift shop. Rosemary informed members the last trip of the year would be on Sunday 30 Oct. to King's Arms Gardens, Ampthill. Admission price: £2. Members should let Joan know in advance if they will be attending. (Meet Rising Sun car park.1.30pm).

Rosemary advised that the guest speaker at the November meeting would be Martin Towsey, Head Gardener at Woburn Abbey. His talk will be on the role of a Garden Manager. The meeting will be followed by drinks and a finger buffet/nibbles. Rosemary requested feedback from members at the Nov. meeting on this year's visits and speakers also suggestions for next year's programme.

Rosemary introduced Margaret Easter who gave an interesting presentation on Gardens in Autumn & Winter. She advised on flowers, plants and grasses to give colour in gardens throughout this period. She also brought along a selection of plants and grasses for sale.

*PN Gardening Correspondent*

### Next Meeting

**MONDAY 21ST NOVEMBER**  
8pm Village Hall

**Guest Speaker Martin Towsey**  
(The role of a Garden Manager)

**NEW MEMBERS WELCOME**  
**GUESTS/VISITORS £2 each**

## **TELEPHONE SCAM**

These details were sent to me recently and I thought many residents should be warned of this possible scam! Please be careful when answering callers who say they represent BT and do not be fooled into giving any bank account details.

*Sue Briggs*

'I received a call from a 'representative' of BT, informing me that he was dis-connecting me because of an unpaid bill. He demanded payment immediately of £31.00 or it would be £118.00 to re-connect at a later date. The guy wasn't even fazed when I told him I was with Virgin Media, allegedly VM have to pay BT a percentage for line rental! I asked the guy's name - he gave me the very 'English' John Peacock with a very 'African' accent - & phone number - 0800 0800 152. Obviously the fellow realised I didn't believe his story, so offered to demonstrate that he was from BT. I asked how & he told me to hang up & try phoning someone - he would dis-connect my phone to prevent this. AND HE DID !!

My phone was dead - no engaged tone, nothing - until he phoned me again. Very pleased with himself, he asked if that was enough proof that he was with BT. I asked how the payment was to be made and he said credit card, there and then. I didn't know how he'd done it, but I had absolutely no intention of paying him, I didn't believe his name or that he worked for BT. He hung up.

I dialled 1471 - number withheld I phoned his fictitious 0800 number - not recognised., so I phoned the police to let them know. I wasn't the first! It's only just started apparently, but it is escalating'

.Their advice was to let as many people as possible know of this scam. The fact that the phone does go off would probably convince some people it's real, so please make as many friends & family aware of this. How is it done?

This is good but not that clever.. He gave the wrong number - it should have been 0800 800 152 which takes you through to BT Business. The cutting off of the line is very simple, he stays on the line with the mute button on and you can't dial out - but he can hear you trying (This is because the person who initiates a call is the one to terminate it). When you stop trying he cuts off and immediately calls back.

You could almost be convinced! The sad thing is that it is so simple that it will certainly fool the elderly and vulnerable. By the way this is not about getting the cash as this would not get past merchant services - it is all about getting the credit card details which include the security number so that it can be used for far larger purchases.

Andy ORPIN. Community Support Officer

A few more common scams you should be aware of:-

### **Premium-rate telephone numbers**

You will receive correspondence via post, a text message or automated voicemail informing you that you have won a major prize and all you need to do to claim it is call an 090 premium-rate number You will invariably be kept on hold for a long time, all the while racking up more costs To protect yourself against these calls and texts, register your phone number with the Telephone Preference Service at [tpsonline.org.uk](http://tpsonline.org.uk) or call 0845 070 0707, which will reduce unwanted sales calls and messages.

### **Prize draw/sweepstakes**

You will usually receive a letter, email or telephone call that tells you that you have won a large prize. To claim your winnings you have to purchase some smaller prizes or send an administration fee. Swindlers rely on the fact that the small print is in a font that's so small most people won't bother to scrutinise it. However, if you do read it, you'll discover that you've simply been given the opportunity to enter a sweepstake you have only a very small chance of winning.

## Work at home / job opportunities

Who wouldn't relish the idea of rolling out of bed, making yourself some breakfast, and then settling down to work while still in your pyjamas? The swindlers make their cash through registration fees, but you'll soon discover that the amount of work you need to put in to recoup your initial outlay – let alone make a profit – is totally disproportionate.

If you would like to work from home, it's better to approach local companies that have a known presence as opposed to a faceless website or telephone service you've seen advertised on a poster. Contact Homeworkers Worldwide on 0113 217 4037 or go to [homeworkersww.org.uk](http://homeworkersww.org.uk).

## Miracle health cures

Who wouldn't pay for diet pills that meant you could literally have your cake and eat it? Like other unsolicited mail or emails, health swindlers aim to appear as professional as possible, reeling off an impressive amount of

medical qualifications and fake personal testimonials from "satisfied customers". Look out for exaggerated claims and don't let your desire to believe the claims overrule the logical part of you that knows they probably aren't true. Spam emails, are being sent around, apparently from HM Revenue & Customs, offering you a £1,500 rebate on your tax. 'Is this a spam email?' - Of course it is, do not be taken in because you think it is from an 'official' department.

## Money loans

You often come across advertisements in local papers offering fast money loans without formal credit checks. You call up a free-phone number and are then told that your loan is agreed but you need to pay insurance costs via a money transfer. But once you've paid the fee, you never receive your loan or hear from the company again.

**Never ever give your bank details to someone you do not know, especially on the phone.**

# Smart Houndz

The smartest houndz in town

## Professional Dog Grooming

All sizes and breeds welcome

Hand stripping, nail clipping scissoring & clipping

Contact

Paul Wager (Caddington) 07875 409933

City and Guilds Level 2 & 3 Qualified

[www.smarthoundz.com](http://www.smarthoundz.com)

[paulmwager@hotmail.com](mailto:paulmwager@hotmail.com)

# Home Renovations

- Kitchens designed & fitted
- Doors hung internal & external
- Bedrooms & bathrooms

*All forms of property maintenance*

CALL Martin Tommey  
01582 517105 or 07968 756180



Reduce waste that goes into landfill  
by offering it to your local community for free!

Post your unwanted items on  
<http://uk.groups.yahoo.com/group/FreecycleLuton/>  
then an email is sent to all members  
who make contact to arrange collection.

Everything *must be free*,  
preferably local, although some things can be posted.

# SLIP END VILLAGE HALL

*Your Village Hall*

for Dances, Receptions & Parties

Facilities for the disabled

*For bookings contact*

*Gill Plummer 723109*

*9 Markyate Road, Slip End*

**DON'T FORGET**

# **BINGO**

**AT THE VILLAGE HALL  
THURSDAYS AT EIGHT**

**Slip End and District Association**



## ***MP's Contact details***

*Gavin Shuker's  
local office is located at:  
3 Union Street  
Luton  
LU1 3AN*

Email: [gavin@gavinshuker.org](mailto:gavin@gavinshuker.org)  
Website: [www.gavinshuker.org](http://www.gavinshuker.org)

*For advice surgery appointments  
call 01582 457 774*

## ***SLIP END PETER EDWARDS HALL & PLAYING FIELD***

*Ideal for children's & adult's parties, meetings, etc.  
Kitchen facilities with catering service available  
Available for various sports activities  
Excellent sports changing facilities  
Facilities for the Disabled  
For Bookings: ☎ (01582) 767916  
or 07956 463128 (not after 9pm)*

Meet Ruth Gammons & Richard  
Stay to discuss local matters which  
are of  
your concern or interest.

*First Saturday of each month  
10am to 12 noon*

***Central Beds  
Councillor's  
Surgery  
Heathfield School  
Caddington***



# **NEVILLE FUNERAL SERVICE**

*Serving the people of Luton & surrounding areas for 130 years*

***Independent and family owned***

Floral and Memorial Service  
Private Chapels of Rest  
24 hour personal emergency service

☎ **01582 490005**

***Neville House  
Marsh Road Leagrave, Luton, LU3 2RZ***

# DIARY - *If you would like your events included, please contact the Editor*

## **October**

- 1st *Meet Central Beds Councillors: Heathfield School Caddington, 10am to noon*  
2nd *Harvest Festival Service 10:30am St Andrew's*  
3rd *Meet Central Beds Councillors: Heathfield School Caddington, 10am to noon*  
8th *Angels Tux and Tails—8pm til late Rising Sun*  
11th *Community Projects Group meet at the Rising Sun 7.30. All welcome!*  
18th *W I The Challenge of a Fund-raising Trip to Nepal*  
22nd *Safe at Home Day 10am - 4pm Village Hall*  
23rd *Live afternoon with Restless Wilf Music from the 60's - 3 til 7pm at Rising Sun*  
27–28th *Holiday Club at St Andrew's*  
29th *Children's Halloween Party at Rising Sun—Entertainment & High Tea*  
*Drinks Party Night—Frog & Rhubarb*  
30th *Gardening Club trip to Kings Arms Gdns Ampthill, meet Rising Sun car park 1.30pm*

## **November**

- 5th *Meet Central Beds Councillors: Heathfield School Caddington, 10am to noon*  
6th *Café Church at St Andrew's 10.30a.m. — Operation Christmas Child. All welcome*  
8th *Community Projects Group meet at the Plough 7.30. All welcome*  
12th *Ye Olde Christmas Shopping Event Slip End School 4—8pm*  
15th *W.I Old lamps & Country Characters*  
21st *Gardening club meeting at Village Hall from 8pm*  
27th *Craft Fayre at Village Hall from 10—3pm in aid of Keech Hospice.*

## **December**

- 3rd *Meet Central Beds Councillors: Heathfield School Caddington, 10am to noon*  
13th *Community Projects Group meet at the Frog & Rhubarb 7.30. All welcome!*

**Wheelie Bins: see below:-**

**Black Bins & glass:** Put out on Friday 14th & 28th October  
**Green and Orange Bins:** Put out on Friday 7th, 21st October



### ***Items for the next issue to us by 15th October***

Want Parish News delivered monthly? Contact Alan Buttery at 1 Claydown Way (01582 724527), alanjan@buttery400.fsnet.co.uk.

Anything interesting to report about village activities, photos, holidays, etc?  
Please contact us, letters and e-mails are encouraged.

Views expressed by our contributors are not the Editor's own. Articles should be sent by the 15th of the preceding month to Sue Briggs, 4 The Oaks, Slip End or Alison Wilson 23 Claydown Way, Slip End or e-Mail [parishnews@slipend.co.uk](mailto:parishnews@slipend.co.uk)

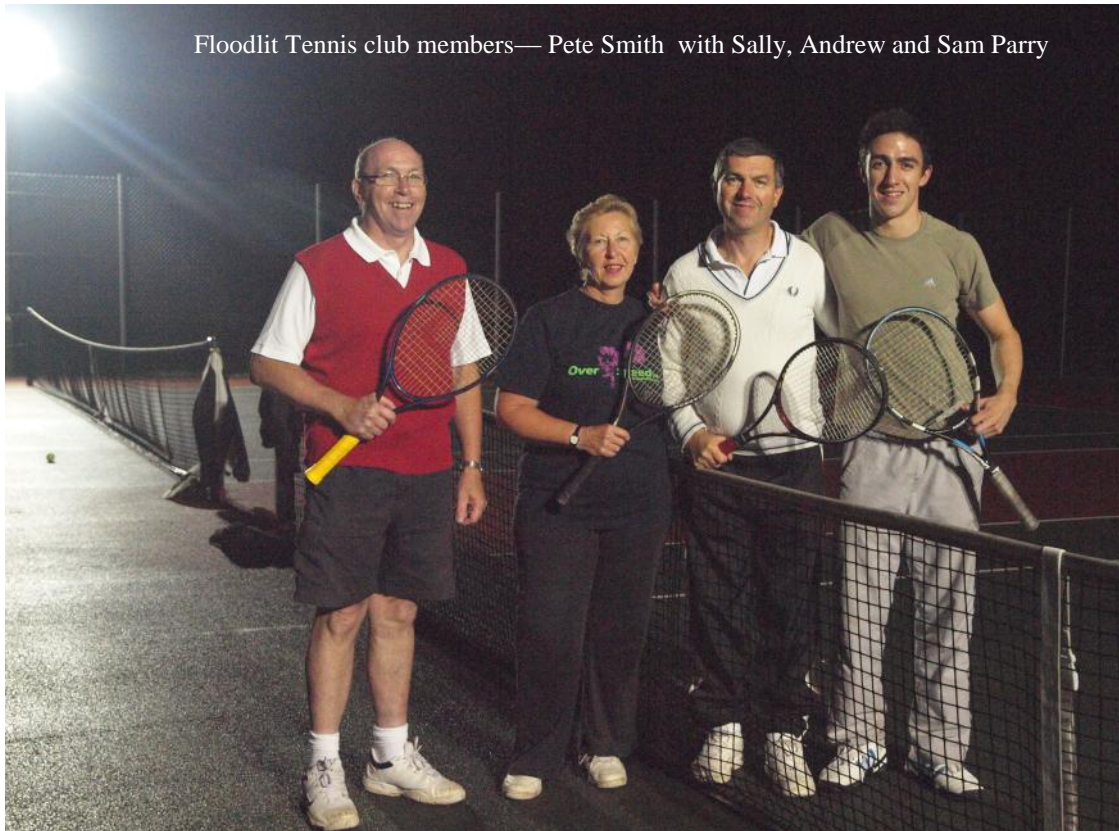
Advertising queries to Katrina Doubleday 07753 168443 or email [hatsbydoo@btinternet.com](mailto:hatsbydoo@btinternet.com)

Parish News is grateful to our advertisers for their contributions. Please support them.



Happy 91st Birthday on 21st September to Wally Allsop (pictured looking very well at Gill and Dick Downs Ruby Wedding earlier this year), and it appears we have a local celebratory in our midst— Dave Jarvis

Floodlit Tennis club members— Pete Smith with Sally, Andrew and Sam Parry





**CITROËN**



**SUBARU**



ISO 9001 (2000 revision)  
Certificate Number 424

**ISUZU**

- \* **New Cars**
- \* **Used Car Sales**
- \* **Repairs**
- \* **Spares & Service**

# Slip End Garage Ltd

**Markyate Road**

**Slip End**

**Service: (01582)  
481600**

**Sales: (01582) 456888**

**Parts: (01582) 411421**

**Our Service Centre is**

**e-Mail: [info@slipendgarage.co.uk](mailto:info@slipendgarage.co.uk)**

**[www.slipendgarage.co.uk](http://www.slipendgarage.co.uk)**

**Catering for all your motoring needs since 1939**