



**SLIP END      ALEY GREEN**  
**PARISH NEWS**  
**PEPPERSTOCK    WOODSIDE**  
**SEPTEMBER 2011**  
**75P WHERE SOLD**





The cover this month features Gardening Club members pictured with plaque, bungalow residents and the Parish Council Chairman. (For details see the gardening club item) Members can also be seen strolling through the lavender fields at a farm in Hitchin.

Children enjoy the Mad Hatters Tea party at the Frog and Rhubarb, the Fun Day at the Rising Sun and face painting



# The Parish @ Large

## SCHOOLS

Slip End Lower: 720152  
Caddington Village School: 726058  
Streetfield: 613421  
Ashton: 663511  
Manshead: 679400

## SPORT

Bowling Club: 412506  
Tennis: 733253  
Darts League: 425323  
Football: 418494

## HALLS

Village Hall: 723109  
Peter Edwards Hall: 767916

## COMMUNITY

Brownies: 723109  
Beavers: 07956 833488  
Cubs: 07972 916626  
Scouts: 07780 676861  
Fly Tipping (CBC): 0300 300 8000  
Friendship Club: 452978  
Slip End Assoc: 414796  
Mother's Union: 738435  
Playgroup: 728865  
Toddler Group 405931  
Allotments: 736892  
FoSELS (PTA):  
07787 401937  
Women's Institute: 421034  
Police: 473211  
Aircraft noise: 395382  
Airparks: 01582 749495  
Water leaks: 0845 7823333

## PARISH COUNCILLORS

Stephen Fuell: 417792  
stevefuell@f2s.com  
Steve Baird 738205  
Steven.Baird@cooperindustries.com  
Ken Crossett 414168  
kencrossett@slipend.co.uk  
Janet Crawley: 07752 902070  
crawley\_janet@yahoo.co.uk  
Sarah Minnighan  
s.minnighan@btinternet.com  
Paul Cooper  
paul-cooper@indigo-tiger.com  
Keith Holme: 07969 154783  
holme@keithjan.fsnet.co.uk

## CLERK TO THE PARISH COUNCIL

Peter Segal: 526594  
(9am to noon weekdays)  
clerk@slipend.co.uk

## CENTRAL BEDS COUNCIL: 0300 300 8000

CENTRAL BEDS COUNCILLORS  
Richard Stay: 0300 300 4230  
Richard.Stay@centralbeds.gov.uk  
Ruth Gammons 01582 738398  
ruth.gammons@centralbeds.gov.uk

## MEMBER OF PARLIAMENT

Gavin Shuker  
020 7219 500 or 07505 738666

## CHURCHES

### St Andrew's Church

Rev. Cathy Pullinger: 725061 Mob 07425 148046  
Wardens: Tony Willson 482681  
Susan Wiltshire 727477

### Aley Green Methodist Church

Minister: Rev Philip Horner  
Senior Steward: Ann Meader 733668

## SHOPS & SERVICES

At the Crossroads, telephone 401069  
Monday to Friday 6.30 to 21.00 Saturday 7.00 to 21.00 - Sunday 7.30 to 21.00  
Garage: Slip End Garage, Markyate Road, telephone 456888

**Website: [slipend.co.uk](http://slipend.co.uk)**

## **GREETINGS FROM CATHY PULLINGER**

Hi everyone,

I am writing this before we go on holiday, so it doesn't really feel as if summer has started yet but when you read this, summer will be coming to an end and hopefully you will all have had a good summer one way or another.



All the churches in the diocese have been encouraged by the Bishop to think about the particular role of their church in the area where they are situated, and to come up with a “**mission statement**” that reflects a little bit of their character and purpose. The PCC members agreed unanimously that the Mission Statement for St. Andrew's is: **We are here as God's family, to draw closer to God, to live out our faith and to welcome all into the love of God.**

These few words reflect something of the character of your Parish Church. **We are a family**, a growing family which has its identity in God. He has brought us together by all that he has done for us and all that he gives to us and we are there to encourage and support one another. We have had a lovely time with the children in the services so far during the summer holidays with them busy with all sorts of activities and joining in songs with actions they know and enjoying a little puppet play most Sundays.

Week by week we seek **to draw closer to God**, to grow in our relationship with him and to learn to walk closely with him in our lives. We do this on Sunday mornings as we pray and worship him and learn about him, and also in our fortnightly home groups where nearly forty members of the congregation meet in 4 groups to study the Bible and pray together.

We seek to **live out our Christian faith** in the communities in which we live and work. Often that is as individuals, whether simply by being good neighbours, or participating in local groups and events, or by serving the community on the Parish Council. We also work together as a Church to give to our Parish in practical ways. We are at present busy planning the **Holiday Club for the October half term**. We will serve our normal **Harvest Supper** in the Village Hall on Friday 30<sup>th</sup> September and after half term we will be running a **parenting course** for anyone who is interested. Please look out for more details in the next Parish News.

Finally our Church Family is open to all, **we are always ready to welcome others into the love of God that we ourselves have experienced**. There are several special opportunities to come along this September.

**On Saturday 10<sup>th</sup> the church will be open all day** for the Historic Churches Bike Ride. We will be providing hospitality to cyclists who will be riding between many churches on the day, but there would also be the opportunity to come in and look around or pray.

On Sunday 11<sup>th</sup> we are having a **Cafe Church**, when we will think about faith journeys, and we will be especially remembering those whose lives were altered forever on 9/11 ten years ago, and thinking about how faith can sustain us and even grow through some of the most difficult times in our lives.

Then on Sunday 25<sup>th</sup> we are participating in the national Back to Church Sunday, only we are calling ours **Come to Church Sunday**, because, whether you used to come, or previously worshiped somewhere else, or have never been to church in your life before, there will be a welcome at St. Andrew's for you.

Bless you, Cathy

*Cathy Pullinger*

---

## **DATES FOR SEPTEMBER**

---

- Sun 4<sup>th</sup>:** 10.30am Informal Communion:  
The eyes of Faith
- Wed 7<sup>th</sup>:** 10.30am Little Stars: Show and tell  
of Holiday activities
- Sat 10<sup>th</sup>:** Historic Churches Bike Ride –  
Church open all day
- Sun 11<sup>th</sup>:** 10.30am Cafe Church – Faith  
Journeys
- Wed 14<sup>th</sup>:** 10.30am Little Stars – Jesus walks  
on Water
- Wed 14<sup>th</sup>:** 7.45pm Prayer Meeting in  
Church
- Sunday 18<sup>th</sup>:** 10.30am Holy Communion –  
Making the most of every opportunity
- Wed 21<sup>st</sup>** 10.30am Little Stars - Jesus calls  
his disciples
- Sun 25<sup>th</sup>:** 10.30am Come To Church Sunday  
– Welcome into the Love of God
- Wed 28<sup>th</sup>:** 10.30am Little Stars - Harvest
- Fri 30<sup>th</sup>:** Harvest Supper in the Village  
Hall
- Sun 2nd Oct:** Harvest Service

### **Wedding at St Andrew's**

Cathy celebrated her first Marriage service at St Andrew's on Sat 6th August and is shown in the photo below with the happy couple — Stuart Eaglesham and Angela Chambers. Congratulations to all!



---

## **LITTLE STARS**

---

### **Attention Mums and Carers!**

After their summer events of "out and about", Little Stars will resume meeting at St Andrews church on Wednesday mornings on 7th September at the usual time of 10:30 am.

A warm welcome awaits all new mums and carers with their pre-school children. We start with tea and coffee so there is no rush for a prompt start just come when you can - it's all informal.

---

### **SURE START**

---

Sure Start visited the village hall for two Mondays during the summer holidays and welcomed local children to join them for a picnic and then play on the bouncy castle and the soft play equipment that they use throughout the year at Slip End School. Many children attended and had a wonderful, noisy time letting off steam and playing with other children.



For more information on local Sure Start centre's contact Hazel Jeffrey **Tel:** 01525 384368 or **Email:**

[hazel.jeffrey@actionforchildren.org.uk](mailto:hazel.jeffrey@actionforchildren.org.uk) or visit Slip End School.

## St Andrew's Autumn Half term Holiday Club Thursday 27<sup>th</sup> & Friday 28<sup>th</sup> October



other spy based activities. Plus all the usual games, crafts, DVD's, puppets, fun and games that have been part of our previous holiday clubs.

*Book early to avoid disappointment.*

Holiday club is most suited to children in school years 1-6 but others including reception year are welcome -if the numbers allow.

We would also wish to advise you that this year we would appreciate a minimum donation of £10 per child but this is for BOTH days

For more details contact either:

Mary (738435), Jill (452539) or Lynne 723029 however further details and consent forms will be distributed on receipt of the registration form

This year "Mission Rescue" will be exploring how God set out to rescue Moses and his people. As secret agents we will be going on special missions, cracking codes and many

The team look forward to welcoming your child/ren!!

<b>Mission Rescue registration form 27&amp;28/10/11</b>	
<i>Childs full name:</i>	<i>Sex: M/F</i>
<i>Date of birth</i>	<i>School:</i>
Please register my child for the holiday club <i>Parent's/Guardian's signature:</i>	
<i>Parent's/Guardian's full name</i>	
<i>Address:</i>	<i>Phone number:</i>
<i>I give my permission for our details to be entered on the Church data base</i>	<i>Yes/No</i>
<i>I give my permission for my child to appear on group photographs</i>	<i>Yes/No</i>

---

**MUSINGS BY A NOVICE BUS PASS PRACTITIONER**

---

Last year, due to my deteriorating eyesight I sadly said goodbye to my car – sad for me that is, but a great relief for other road users! I had to unravel the complexities of our bus services. We are blessed with a variety of buses but what service went where and when, as well as where to find the relevant bus stop was a total mystery. I hope this article will be of assistance to those who treasure their bus pass and I apologise for any inaccuracies!

There are 2 companies serving Slip End, Centrebus (46 & 231) & Grant Palmer (202), there are 8 bus stops – 2 of them are secret & unmarked!

**202 Harpenden to Dunstable** (*stops in Front St, near Crawley Close, a secret stop opposite and Grove Rd near entrance to Village Hall car park & opposite*) This is a 2 hourly magical mystery tour, weekdays only. Starting from a superior bus shelter outside The George in Harpenden it rushes through Pepperstock & Slip End, heads off to Aley Green, squeezes through Little Green Lane in Caddington & off down Chaul End Lane. It stops at Tesco, Luton & Dunstable Hospital, Sainsburys and finally Asda, but before you rush off clutching your shopping list, it doesn't come back the same way so you could be waiting, laden with shopping, for a very long time! Some of the return journeys start at Asda and some the Winston Churchill, it then heads for the hospital & B & Q before chugging back up Chaul End Lane. I have found that Grant Palmer buses tend to scurry along and one needs to wave wildly to persuade them to stop!

**46 Luton to Hemel Hempstead** (*stops at the slip road to St Andrew's Church, a secret stop opposite, Church Rd opposite the Rising Sun car park, & in Markyate Rd near the Citroen garage*) This wonderful hourly service travels via Markyate, Flamstead and Redbourn before coming to rest in Hemel's shopping centre. The return journey is a bit of a challenge as the bus stops have all been renumbered since the timetable was published! I suggest you ask the driver before alighting, then check with people waiting at your chosen

stop. I have been seen to run along the High Street wildly waving shopping bags in a futile effort to attract the driver's attention!

**231 Luton to Dunstable via Caddington** (*this service uses all the bus stops except the one in Markyate Rd.*) This is an invaluable, confusing, challenging service that runs roughly ½ hourly in a morning and hourly in an afternoon. It studiously avoids Pepperstock most of the time (see timetable) but just occasionally its conscience gets the better of it and it dives off down Front Street and back, before re-joining its normal route. Thus I have boarded the bus in Front Street, expecting to go to Luton and ended up in Dunstable! In Luton it finishes in Church Street by the entrance to the Mall, in Dunstable it finishes at The Square – opposite side of the road for the return journeys.

This service seems to be pretty reliable, although on one occasion our journey was enlivened when the bus became tightly wedged with a lorry just outside Caddington. We all sat entranced as the 2 drivers indulged in vigorous arm waving and shouting while we all had a jolly time reminiscing about the mishaps we had experienced in our driving days.

I haven't bored you by quoting bus times, they vary according to school holidays/term time/day of the week. (No buses on a Sunday) Timetables are essential reading in order to have any chance of attaining one's preferred destination and the last bus home can be as early as 15.15 or as late as 18.10 (no wild social life for us) Timetables can be obtained from libraries or the information is available on line.

Thus, having mastered the mysteries of our local bus service, it is possible to travel the entire country for free by waving a bus pass. For example I often catch Airparks to the airport, the 757 to London (not free until 9.30am) and having 'googled' Transport for London, whiz around London (it really is 'whiz' as there is little congestion in bus lanes) enjoying sites unseen by tube. I am so grateful for my bus pass – enjoy yours!

Joan Duncombe

## **FOSELS—SUMMER FAYRE**

The weather was kind on the afternoon of the fayre. There were plenty of people out having fun and lots going on including a cake decorating competition, results below:-



1<sup>st</sup> Daisy Bates Yr 1, 2<sup>nd</sup> Ellie Watson Yr 2,  
3<sup>rd</sup> Chloe & Gracie Lamb Reception & Yr 2,

They had hampers as prizes. There was also a home made bunting competition.

There were stalls, side shows, dancing from Donna's School of Dance (who meet in Peter Edward's Hall), Pimms, BBQ and face painting (see photo of Leyla on the inside front cover)

The team photo, below, is from L-R... 'The Stig', Debbie Newsome, Claire Penney, Penny Waistell, Wendy Durrant, Naomi Negus & the 'Big Space' Alien.



The net profit was £1800.60—triple last year's so well done to everyone!

Parish News received a message from Len Millard saying... " many people attending the summer fayre including Dennis Flitton, Simon Brown and myself commented how professionally the event was run and organised. The team headed by Naomi Negus and assisted by Penny Waistell, Mandy Wright and others really worked hard and as members of the parish we would like to thank them for their efforts...in conclusion the parish needs people like the FOSELS team to contribute to Parish and community spirit."

*To keep track of latest local issues, events, etc., visit .....*

**[www.slipend.co.uk](http://www.slipend.co.uk)**

*Our website contains lots of information covering all activities and groups in the Parish. Web mistress Sarah Minnighan & Webmaster Peter King have been working hard to update information and improve presentation.*

**Charisma Hair & Beauty Salon**

Ladies  
&  
Gentlemen

☎ 722801



**Opening Times**

Mon: 9.15-2.45

Tues: 9-5

Wed: Closed

Thurs: 9-6

Fri: 9-7

Sat: 8-3

Air-conditioned - Easy Parking - Chiropody  
Remedial Massage - Indian Head Massage  
43B Elm Avenue, Caddington



**Catherine Hazel Crafts**  
Handmade Doorstops,  
Bunting & Gifts

Take a look at ...  
[Catherine-hazel-crafts.co.uk](http://Catherine-hazel-crafts.co.uk)

**Call 07962 621967**



**Body Image**  
**Fashion Jewellery**

at

**Woodside Animal Farm**

**Tel: 07715565958**

**[Cara Kennedy CK-13@Live.co.uk](mailto:Cara.Kennedy@Live.co.uk)**







# **SLIP END SOCIAL CLUB**

*New Street, Slip End*

**☎ 415804**

Live Sky Sports on the Big Screen - Pool - Darts - Crib - Dominoes  
Bingo Wednesdays; Saturday Night Entertainment every fortnight  
Golf Society

*Be social  
make it  
your local!*

Opening times:

**Weekdays: 4.00 to 11pm**

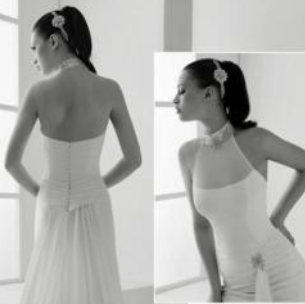
**Saturdays: 12 noon to 12 midnight**

**Sundays: 12 noon to 11pm**

*New members  
& their families  
welcome!*

*Usual Club prices!*

# Mignonette



**Specialists in  
Bridal Gowns  
Bridesmaids  
1st Communion  
Prom Wear**

**Alterations on all garments**

## Mignonette Beauty

**Waxing  
Tanning  
Nails (gel)  
Nails (acrylic)  
Facials**

**Semi-Permanent make-up**

**The Chapel, 38a Church Road,  
Slip End, Luton, Bedfordshire LU1 4BJ  
01582 402345**

**info@mignonette.com  
www.mignonette.com**



Our trip to Ickleford visiting the Lavender Fields was a very good evening although a bit chilly.

Our group outing was to Essex visiting Smuggling Haunts and the Tiptree Jam Factory, both were very enjoyable. July found us with Paul Haley speaking on 'Well I Never Knew That'. Paul talked to us about all the old sayings we used to hear when we were children. It is strange that we still use them now and maybe do not know the true meaning.

Woburn Abbey Gardens was the subject of Martin Towsey who told us of his Role of a Gardens Manager. He manages this part of the Bedford Estate, together with a team of workers. They all work as a good team and have achieved an amazing transformation of the Abbey Gardens. It has taken several years of planning and redesigning and planting. Martin spoke very quickly and kept us all in awe of the management of the Estates even the Squares in London which have to be maintained to a high level. If you want a good day out, Woburn Abbey Gardens is the place to visit.

One of our ex members, Lenise Caves was 90 in August and we have sent her a Birthday Card. Happy Birthday Lenise. Sadly, one of our ex-members, Hazel Bennett has passed away. We send our condolences to Hazel's family. Hazel was a long time member of the W.I. and we shall miss her.

Our Birthday Party is in September when a two course meal will be served together with evening entertainment. Some of our Group members will be joining us. In October we have Sandra Lawes telling us about The Challenge of a Fund Raising Trip to Nepal and in November our speaker will be Charles

Porter on the subject of Old Lamps and Country Characters.

We meet on the third Tuesday in each month at the Baptist Church Hall, Dunstable Road at 7:30pm, and look forward to seeing you there.

*Linda Bartlett*

---

**SAFE AT HOME DAY**

---

On Saturday 22<sup>nd</sup> October Cllr Fuell will be re-launching the Neighbourhood Watch Scheme in the Parish at the Village Hall between 10am and 4pm. This was one of the projects highlighted in the Parish Plan Questionnaire and will be one of the first tasks that the Community Group and residents can get involved in. It is hoped that the full Parish Plan will be available for inspection.

There will be representatives of :-

The Police

The local police force doing number plate security and mobile phone and other object ID marking.

Manpad

Representatives of the Manpad scheme will be on hand to talk about the anti-terrorist scheme and how residents can help keep our airport safe.

The Fire Service

The local fire engine and team will be on hand to talk about prevention of fire in the home.

Ambulance and medical services

It is hope that a Paramedic will be on site to show what services they provide. There will also be representatives from the local air-ambulance service at the hall.

Teas and coffee will be available as well as a raffle to raise funds for the Community Group. So please support your local emergency services and come along.

# U.E.S

## Utility Engineering Services



Power  
Failure?



All electrical works carried out including:  
24hr call-out, rewires,  
testing, extra sockets etc.

## Contact Paul

 **01582 450800**



## BIO SCULPTURE NAIL TECHNICIAN

The perfect solution  
for beautiful hands.  
Based in Slip End.

Contact Rachel  
**07870833080**

[Rachel.gilligan@ntlworld.com](mailto:Rachel.gilligan@ntlworld.com)

10% discount with this advert!

## PH SERVICES

CAR & MOTORCYCLE REPAIRS

PHILIP HALL  
MECHANIC



- \* Servicing
- \* MOT
- \* Tyres
- \* Bodywork
- \* Computer Diagnostics

UNIT 3  
MANOR ROAD GARAGE  
CADDINGTON

Office: 01582 722251  
Mobile: 07769 734417

e-Mail: [phillhall1200@btinternet.com](mailto:phillhall1200@btinternet.com)  
Damaged bikes wanted for Cash  
Nationwide collection

10% Discount  
with this voucher!



Painting & Decorating  
**PETE the PAINTER**  
for all your decorating needs

- Laminated Flooring
- Carpentry Work undertaken
- Tiling - Floors & Walls
- Over 20 years experience

4 Elm Avenue Caddington

Call for a free Quotation

Tel: 01582 453611

Mobile: 07971 348485



## PILATES

'Intelligent Exercise'

A method of exercise  
and physical movement  
designed to stretch body.

Group sessions at  
Slip End School

For information  
call Andrea on  
01582 458886



## Stoten Gillam

chartered accountants

chartered tax advisers

PRACTICAL SOLUTIONS FOR  
GROWING BUSINESSES

**01582 608601**

Alban House  
99 High Street South  
Dunstable LU6 3SF

[www.stotengillam.co.uk](http://www.stotengillam.co.uk)  
[enquiries@stotengillam.co.uk](mailto:enquiries@stotengillam.co.uk)



ACCOUNTS  
TAXATION  
AUDITS  
FINANCIAL  
ADVICE  
PAYROLL  
COMPUTER SERVICES



## Scissors

Mobile Hairdresser

Experienced, London  
trained hairdresser,  
now available locally.

Call Dorothy  
tel: (01582) 726410  
Mobile: 07563 764676

This month is the first of the autumn months, days start to shorten and early morning frosts are likely towards the end of the month.

Scarify or rake the lawn to remove dead and matted debris to let air and water into the soil and let the nitrifying bacteria in the soil do its job. Reseed any worn patches and apply an autumn fertiliser to promote a lush growth.

Keep dead-heading roses or cut blooms for indoor use. Cuttings can be taken now, about 12" long, remove all the thorns and trim top and bottom leaving just the upper pair of leaves and insert into the soil so that the lowest leaf is just above the soil, these will take about a year to root and be ready to transplant.

Stake large type dahlias and chrysanthemums to stop the wind breaking them and cut for the vase when the blooms are well opened. If you intend to take cuttings from the root stock of chrysanthemums it is a good idea to label them whilst you can tell what colours they are, or like me you will forget and have to go for pot luck



next year! Gladioli corms should be left in the ground to mature until next month, although the tops may turn brown.

As annuals start to fade remove them so that spring bedding plants can be planted towards the end of the month, such as wallflowers, polyanthus, forget-me-nots and sweet williams. Bulbs such as daffodils, hyacinths, tulips and crocuses can also be planted at the same time. Bulbs wanted for Christmas can be planted now, put as many as the pot will hold packing them as close as possible. To get a good display the bulbs need to make a good root system, so they need to be kept in

a dark cool place for approximately 3 months.

Towards the end of the month alpines can be replanted and this month is a good time to make a rockery. Make sure it is free draining and not subject to becoming too wet, as the plants will rot, so make sure there is plenty of rubble as a base and finer rubble as a top layer.

Harvest soft fruit as it ripens and when fruiting has finished, cut out all the old wood and tie in the new shoots. Spring cabbages can be planted out towards the end of the month. Plant close together in the rows and as they get going in the spring pull every other one out and use as leaf greens and leave the others to mature and heart up.

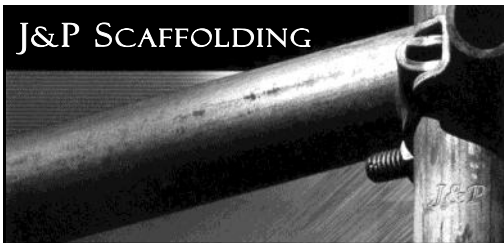
Potatoes should now be harvested, pick a dry day and leave newly dug potatoes on the ground to dry off for an hour or so, then pack away for use during the winter. Do not store any potatoes that have been attacked by slugs or ones that have been hit by the fork as they will not keep. Store in a cool dry place and as dark as possible to stop them going green. They will need checking during the winter to sort out any that are rotting and discard these as they will affect the other healthy ones.



Remove any shading from greenhouses as the plants will require more light and the sun starts to lose its fierce heat. Apples and pears can be stored if you cannot use them all right now, but make sure the stalk is attached to the fruit, otherwise they will not store well, and the fruit has no blemishes. Wrap them individually in paper and place in a cool, dark, dry place such as a shed, but watch out for mice or they will eat them before you do! Check once a week for any that need discarding or using.

*Don't forget to e-mail me if you have a question at: [russell.sprout1@hotmail.co.uk](mailto:russell.sprout1@hotmail.co.uk)*

J&P SCAFFOLDING



**Phil Johnson**

Mobile: 07720 846963 Tel/Fax: 01582 429106

T. HUSSEY

# TONY HUSSEY PLASTERING SERVICES

Mobile: 07730 744174

E-Mail: [tonyhussy@aol.com](mailto:tonyhussy@aol.com)



CONSTRUCTION LTD

e-Mail: [srccs.construction@yahoo.co.uk](mailto:srccs.construction@yahoo.co.uk)

Contact  
Sheldon Stanbrook  
39 Front Street  
Slip End  
LU1 4BD

Tel: 01582 730549  
Mob: 07790 583118

*Do you want to advertise  
In this space?*

*Contact Katrina on 07753  
168443*

*Or [hatsbydoo@btinternet.com](mailto:hatsbydoo@btinternet.com)*

## Chiropodist

*State Registered*

*Home visits*

*Evening & weekend appointments*

*Keith Appleby BSc (Hons), MChS, SRCh*

*Telephone: 01582 873136*



## RLS AUTO REPAIRS

GENERAL REPAIRS, SERVICING,  
MOT & FAILURES, DIAGNOSTICS  
GEARBOXES & CLUTCHES,

RUSSELL (DAVE) STANBROOK

80 MANOR ROAD  
CADDINGTON  
LU1 4HQ

07976 584949

[rlsautorepairs@hotmail.co.uk](mailto:rlsautorepairs@hotmail.co.uk)



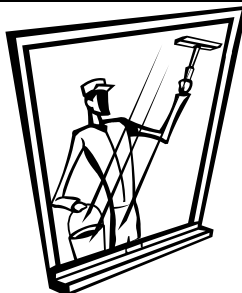
## Pastel Painting Artist Portrait



Dogs a Speciality - Reasonable Rates

Contact: Bea Malsbury (Slip End)

Tel: 01582 488489



## Need a reliable Window & Carpet Cleaner?

*We operate in the  
Slip End area*

*For free quotation  
contact us on*

*01462 629302*

*07970 406 926*

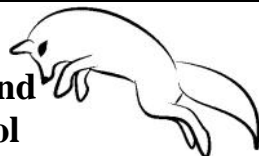
## DOMESTIC APPLIANCE REPAIRS

Washing Machines, Dishwashers,  
Driers, Cookers, Microwaves,  
Fridges & Storage Heaters

**Barrie Acton**

**Slip End (01582) 728865  
or Mobile 07802 723160**

## A. McClelland Pest Control



For fast response call  
Mobile 0777 494 8415  
or office 01582 872158

e-Mail: [a.mcclelland\\_pestcontrol@hotmail.co.uk](mailto:a.mcclelland_pestcontrol@hotmail.co.uk)

# Richard Gurney & Son Contracting Services

Longview, Luton Road, Markyate

*Tree Surgeons & Fencing Specialists  
Hedge Trimming & Tree-stump removal  
Wood Chippings (good for mulching)  
Logs for Sale*

☎ (01582) 840407

*Established 1970 - Fully Insured*

## REFLEXOLOGY

This complementary therapy works on the feet to aid healing to the whole person. It helps us to cope on physical, mental and emotional levels, encouraging healing and maintaining health.

Reflexology may aid:

*Stress-related conditions • Back Pain • Migraine  
Fertility • Sleep disorders • Hormonal Imbalances*

*www.Starlighttherapy.weebly.com*

*Call Lyn on 01582457815 or 07926367810*



## PROBLEMS WITH YOUR PC OR APPLE-MAC?



*For expert advice & trouble shooting  
call Tony Glynos on 458353  
tony.glynos@talk21.com*

## THE FRAME SMITH

Beautiful Bespoke Picture Framing

*Free local service in your home with free collection & delivery  
or visit me by appointment at my workshop in Slip End*

Free Estimates & Advice  
Call Anthony Smith  
The Frame Smith

Daytime: 07976 830906 After 6pm: 01582 424516



# INKERMAN

## BUILDING & ROOFING Co

EXTENSIONS - CONVERSIONS- RENOVATIONS

www.inkermanbuilding.co.uk

*The Complete Design,  
Plan-completion Service included*

- ✓ New Build    ✓ Restoration
- ✓ Electrical Work & Plumbing
- ✓ All General Building Work
- ✓ Flat & Pitched Roofing
- ✓ Brickwork Contractors
- ✓ Painting & Decorating
- ✓ Insurance Work



☎ 01727 835702 (office)

☎ 07774 955255 (mobile)

01582 876509 (home tel/fax)

*Do you want to advertise  
in this space?*

*Contact Katrina on 07753 168443  
hatsbydoo@btinternet.com*

## JOHN SAUNDERS & SON Incorporating E. Franklin & Co.

## FUNERAL DIRECTORS

48 Duke Street, High Town, Luton



☎ 731696

*Day & Night Service*

*Monumental Services  
Members N.A.F.D.*

*Prepaid Funeral Plans available*



Reported Crime: During the course of July there were 3 reported Crimes of Theft from Motor vehicles and 1 Criminal Damage.

Anti-social behaviour has seen a dramatic decrease within all of the villages over the last few months. Reports as follows:-

20/07/2011 Crawley Close, 24/07/2011 Saint Andrews Close, 16/07/2011 The Oaks

Crime:- 02/07/2011 06/07/2011- THEFT FROM MOTOR VEHICLE Grove Road, 14/07/2011 15/07/2011 THEFT FROM MOTOR VEHICLE Luton Road, 29/07/2011 30/07/2011 THEFT FROM MOTOR VEHICLE Summer Street,

12/07/2011 15/07/2011 CRIMINAL DAMAGE TO VEHICLES Church Road

There have been a number of thefts from motor vehicles in the rural areas of the county and we ask residents and walkers to be vigilant to any suspicious activity in these areas. We also advise members of the community not to leave vehicles unattended and not to leave property on show in vehicles; this includes Satellite Navigation systems, Laptops, Handbags, Sunglasses, Money, Coats and audio equipment. Patrols have been increased in these areas of recent thefts and stop checks are being carried out on any suspicious vehicles and persons in these areas.

**Operation Wharton** – This will target nuisance vehicles and motorcycles in the Dunstable, Houghton Regis and Rural areas. This operation is ongoing and a number of vehicles have been seized so far.

**Operation Yaddle** – This will target nuisance youths and underage drinking. There will be a dedicated team allocated to this operation on a Friday and Saturday night. It is ongoing and a number of youths have been stopped and spoken to, tobacco and alcohol have been confiscated from underage youths in Slip End in July.

Those who like to support “Green” initiatives may be interested in the following:-

I am currently involved with another social enterprise with the remit of introducing cheaper alternative fuel sources to various communities and would be grateful for your support at:

<http://www.energyshare.com/biofuel/>

We plan to collect used cooking oil from domestic households so that:

1. we can help defer used cooking oil from land fill / clogging up drains
2. produce biofuel from purely recycling used cooking oil
3. offer you a cheaper fuel alternative to heat your homes and run your car (saving you up to 20%)

If you would like to find out more about our scheme, please feel free to contact me by email on [adriana@esuda.co.uk](mailto:adriana@esuda.co.uk).

## *High Elms Tree Surgery Ltd*

---

**SHAUN MORRIS**

---

*Specialist in: ~*

- FELLING
- LOPPING
- SHAPING
- STUMP REMOVAL
- HEDGES TRIMMED, SHAPED & REMOVED
- DEAD WOODING
- REDUCTIONS
- CROWN LIFTING
- WOOD CHIPPINGS
- LOGS DELIVERED
- TREE REPORTS
- TREE SURVEY INSPECTIONS
- T.P.O. & PLANNING APPLICATIONS

• 24 HOUR EMERGENCY SERVICE

• No Job too small • Free Estimates & Advice  
Fully Insured to £5 Million  
Approved by Local Authorities

**Tel: 01582 840144 Mobile: 07939 623675**  
***www.highelmstreesurgery.co.uk***  
**Old Beechwood, Cheverells Green, Markyate. AL3 8AB**

On a very hot Sunday afternoon 26 June, members visited The Gardens of the Rose at St Albans. Founded in 1876, the Royal National Rose Society is a leading gardening charity dedicated to encouraging, improving and extending the science, art and practice of the cultivation and conservation of roses. The Gardens were completely rebuilt in the winter of 2007 and further enhanced during the winter of 2009 by the introduction of additional grass paths enabling visitors more access to the Roses. At that time a decision was made to support general gardening trends by the introduction of many more companion plants. The Garden showcases over 15,000 Roses old and new, fragrant and colourful, displaying the stunning heritage of our favourite flower. When we arrived, a tour of the trial grounds was about to start, which we were invited to join. The Guide explained growers from all over the world send new roses to be planted, to see how they performed against various criteria, i.e. blackspot, mildew, rust, growth, scent, flowers stand up to rain, all over a 3 year period. Members were given a sheet to identify roses which they considered met the criteria and the public were likely to purchase. The Guide explained it cost £1000 to register a new rose and growers only received 30p from each sale. (This is where the public involvement in the trial helps, as you certainly need to sell plenty of the rose to even recoup your £1000!!)

The gardens themselves are spectacular with plenty of colourful roses, trees, plants and grasses. (*See inside back cover*) There are paved paths, several ornamental ponds, rose arches and a pleasant refreshment area. A visit is recommended and well worth the £5 entrance charge. Directions: Take the Watford Rd from St Albans and at the mini roundabout, turn right by the Three Hammers Pub into Chiswell Green Lane.

The Club has also had several other trips over the past two months.

Sun. 17 July. Chenies Manor Plant Fair, near Rickmansworth. Exhibitors came from all over the country with good quality common and unusual plants.

Sun. 24 July. Hitchin Lavender Farm.— reported here by Rosemary (*see cover photo*)

We had quite a contingent for our visit to the Hitchin Lavender Fields on Sunday 17<sup>th</sup> July, and a good time was had by all. It was a beautiful sunny day and twelve of us set off from the village in three cars. We were all amazed in our car as we approached the fields to see people in amongst the lavender, it looked as if they were striding through the thick of it. What we discovered when we got there is that the rows are planted about two feet apart and so there are pathways in between which we couldn't see from a distance!

They have a large car park and you can access the shop and tea room without having to pay an entrance fee, you only pay if you wish to go into the fields where you can pick your own lavender, having been given a pair of scissors and a small carrier bag to fill. We all decided that we would take the plunge, but it is not for the faint hearted, as it is alive with the sound of bees!

There were also plenty of ladybirds, beetles and all manner of insects which were fascinating to watch.

Having picked our lavender we decided refreshments were in order and so we all headed back to the tea room where we had a nice cup of tea and some of us couldn't resist the inviting looking cakes, whilst others took the opportunity to do some present shopping before returning home.

Sun. 7 Aug. Beesonend Open Gardens, Harpenden,, (unfortunately cancelled due to bad weather).



Thurs. 25 Aug. Bressingham Steam & Gardens. Report next month.

At the Garden Club meeting on Mon. 18 July a talk and slideshow was given by Jude Hirstwood from the Beds. Bat Group, which was very interesting. It allayed some member's fears of bats and also advised on their help in pollinating plants. Jude and her other group members answered questions, over tea and biscuits, and had also brought a previously injured bat to the meeting, which was fed on meal worms. After dusk, at 9.30 those present set off to Woodside on a "bat walk". The sighting of bats along both Grove Road and by Woodside Farm was helped by the use of four monitors which warned of the flight of bat(s) nearby.

Following the Gardening Club's ongoing annual sponsorship of plants in the Crawley Close Garden, a plaque was erected on Thurs 4th August. *See front cover which shows Garden club members- Carol Beeton, Rosemary Wickens and Valerie Church, residents— Jim Galbraith & Barbara Sinclair, Gardens' maintenance— Debbie & Andy Prothero and Parish Council Chairman Ken Crossett.*

The next visit scheduled is on

**Sun. 30 Oct.** King's Arms Gardens,

Ampthill. Admission £2

(Meet 1.30pm. Rising Sun Car Park)

*PN Gardening Correspondent*

**Next meeting  
Mon 19th September  
8pm Village Hall  
Guest Speaker Margaret Easter  
Gardens in Autumn and Winter**

**New memers welcome  
Guest / Visitors £2 each**

---

## **1ST WOODSIDE BROWNIES**

---

# Brownies

On Wednesday July 20th, parents joined the Brownies for a barbecue with bouncy castle to say thank you and goodbye to Philippa and Verity who have run Brownies for the last three years.

Thank you both for keeping Brownies going!  
*Wise Old Owl*

From September Brownies will be run by Paula Fowler, who has been involved in Brownies before as a Tawny Owl and a Brown Owl, helping her mother Gillian Plummer and Barbara Ray in the past. Paula is a Teaching Assistant at Chantry School and Slip End School and runs after school clubs at both.

---

## **CRAFT CLUB AND PROJECT CLUB**

---

These are held at Slip End Lower School on a Wednesday and Thursday from 3:30 — 4:30pm for pupils attending the school. A charge is made for these clubs which are run by Paula Fowler and Gillian Plummer.

Contact 01582 723109 for a place.



*Above, Gardens of the Rose, Chiswell Green, St. Albans*



with an informal ...

# Cafe Church Service

At St Andrew's  
10.30 Sunday 11th September  
Followed by  
**Bring & Share Buffet Lunch**

*Building on the success of our June Cafe Church you are invited  
to contribute to a buffet style lunch to share.  
The theme of this Cafe Church is 'Journeys' You're welcome!*

## **FARLEY HILL METHODIST CHURCH**

Farley Hill Methodists were quite busy over July and August. The annual charity concert on July 18th with the Beds Police Choir proved a grand affair. Councillor Don Worliding, Mayor of Luton, Mrs Moira Worliding, Lord and Lady McKenzie, Gavin Shuker M.P. for Luton South Councillor Hussain and Caroline Mwaniki from Action for Kids were all in attendance and spoke.

The Police Choir, directed by Mark Edmonds, produced its usual excellent array of songs and the audience was guided through the programme by the marvellous compere Joyce Nethersole. Natalie Hodder from the FHM Sunday School presented Mrs Worliding with a bouquet of flowers. Ken Cameron was Master of Ceremonies.

The Lunch Club enjoyed the now traditional July Ploughman's and Salad with Fresh fruit and cream much enjoyed by all. The August lunch was followed by the annual mystery tour, which did not go to Hong Kong as Ken

Cameron hinted but to Barton Le Clay Water Mill, not much difference really!

Three days later on Saturday 13th FHM took off to Clacton on their annual coach outing and, with the weather being warm and sunny after a drizzly start, everyone enjoyed themselves and the local fish and chips.

The September Lunch Club is on Wednesday 14th September 12.30 for 1pm, the Sixth Anniversary celebration lunch of a roast dinner, dessert and entertainment, a "singalong" with Sheila Lathwell on the piano. Non members who wish to attend should book with Ken on 07852424628.

On Saturday October 8th FHM, World Wide Church and St John's Anglicans hold a three church Macmillan Coffee Morning at Farley Hill Methodists North Drift Way, at 11am. There will be stalls including home made cakes and marmalade.

For more information contact Ken on:-

07852424628 or khubsurat1@xlnbb.co.uk

*Ken Cameron*

# **ALEY GREEN METHODIST CHURCH**

## **Services and Diary dates for September**

### **Sunday 4th**

11.00am Morning Service - Rev Bob Forrest  
(Communion)

11.00am Sunday School re-opens

### **Tuesday 6th**

7.30pm Bible Study—Rev Bob Forrest

### **Saturday 10th**

10.00am RAGS walking group will be taking part in the Beds & Herts Historic Churches Trust sponsored 'Bike 'n Hike'.

### **Sunday 11th**

11.00am Harvest Festival - all age worship

### **Monday 12th**

7.30pm Harvest Auction for 'Water Aid'

### **Tuesday 13th**

10.00am/12.00pm 'Cakes & Company'

### **Saturday 17th**

Caddington Village Show  
(Aley Green Preserve Stall)

### **Sunday 18th**

11.00am Morning Service - Mrs Jean Forrest

11.00am Sunday School

### **Wednesday 21st**

7.30pm Coffee Evening  
In aid of Methodist Homes for the Aged

### **Saturday 24th**

11.00 Lunch Bunch - A talk by Mike Smith on his marathon sponsored bike ride from Durness to Dover, followed by lunch.

### **Sunday 25th**

11.00am Morning Service - Mr Gray

11.00am Sunday School

\*\*\*\*\*

Church members young and old really enjoyed taking part in the Village Carnival. We travelled in style in vintage cars (from the Beds & Herts Vintage & Classic Car Club)

and camper vans. Each vehicle represented an aspect of 'A Year in the Life of Aley Green Church'. Weddings, Fellowship, Bible Study, 2x2 Club, Coffee Evenings etc. Our preserve stall at the fayre after the parade raised £105.50 for Methodist Homes for the Aged. We added to that total with pew envelopes £37.45 & Coffee Evening £65.00.

The Sunday School Anniversary service was wonderful, the children and teachers performed 'Jonah Man Jazz' to a packed church. The children chose Junior Mission for All to receive the collection of £124.00. During the service our minister Rev Phil Horner welcomed Gil & Vic Holliman into membership. After the service we all tucked into afternoon tea in the school room.

Although we have reached our target of £500.00 for LAMP our charity of the year, we have raised a further £170.00 from lunches. Our July Coffee Evening raised £112.00 for Action for Children.

If you would like to join us for the Sponsored Bike 'n Hike in aid of the Beds & Herts Churches Heritage Trust, please contact Ann (tel. 733668) for more details. After the walk lunch will be served at our Church.

Mike Smith will be telling us all about his sponsored bike ride from Durness to Dover, for the East Anglia Air Ambulance. Lunch will be served after the talk and any profit will also go to the charity.

We look forward to seeing you at the Village Show when we will be selling our preserves in aid of Action for Children.

You are invited to our Harvest Festival service and auction in aid of 'Water Aid'. Harvest is a special time of year when we can thank God for the harvest of the earth and all his gifts to us, remembering those who are not as fortunate as us.

Pop in and see us, we'd love to see you.  
Yours in Christ,

*Ann Meader*

---

## GRADUATES

---

Congratulations must go to anyone who has graduated recently and we wish them all luck in job hunting and with their future plans. A few of them are mentioned here—please send us any more for next month's issue.



Kate Isgar (*pictured above*) is from Aley Green. She gained a 1st Class Honours Degree in Zoology and was studying at the University of Wales in Swansea, she intends to return there next year to do a Masters.



Nathan (*shown above with Tammy & Peter King*) is stepson to Peter, who is the

Webmaster for Slip End and a member of St Andrew's where he is a musician in the Church band. Tammy also sings in the band.

Nathan was at the University of Liverpool, and he got "B.A. (Honours) in Philosophy and Politics" with a 2:1. He is hoping to get a post graduate position in one of the big tax and accountancy firms either locally or in London. He has been very studiously practicing for the various tests that they set prospective employees!

---

## SLIP END SCOUT GROUP

---



### Slip End Scouts Charity Car Wash

On the 23<sup>rd</sup> July Slip End Scout group took part in a charity car wash, to raise funds for the group, all the group members worked very hard cleaning the cars over the day and managed to raise £120.00. A very big thank you to all who came along.

A very big thank you also to Paul and all his staff at the **Frog & Rhubarb**. (*Also see Paul's report on the pub pages*) Without their help the day would not have been possible. Another big thank you goes to our sponsors, **A5 Car Valeting Centre Ltd**, of Packhorse Service Station, Watling Street, Kensworth, Beds Lu6 3QU

We look forward to seeing you all next year. If you want to know more about what the Scouts are getting up to, or can offer help as an adult volunteer, please feel free to drop in and see us at the Peter Edwards Hall on Monday or Friday evenings.

For more information, contact details can be found on the front page of the magazine.

---

## **CRIME PREVENTION & SECURITY**

---

**Lift the Handle, turn the key!** This is the simple message being given to residents by the Community Safety Partnership to reduce the risk of burglary. Following the success of Bedfordshire Police's Operation Peak which aimed to reduce burglaries during the winter months, Central Bedfordshire Council and its partners are now passing on a clear message to communities..... Ensure your properties are secure all year round!

By securely locking UPVC doors, along with keeping valuables out of sight, burglaries around the area could be prevented. In particular people are spending time in their gardens thinking their houses won't be a target. All too often police get reports of people who have come in from the garden to find someone has slipped through a front or back door and grabbed easily removable items such as handbags or wallets, or even keys along with the family car. Most thieves are lazy opportunists and if they see a door left wide open, or possibly unlocked with the owner engrossed elsewhere, they will not hesitate to take advantage of the situation.

Another very common method of entry is whereby offenders will smash a window or a pane of glass close to the door lock, reach in and open the front or rear door from the inside. This is made possible if a key has been left in the back of the door, the door only has a simple latch lock and no deadlock, or if a lock exists but is not used.

Whilst it is important to implement measures to protect your property from burglary it is also very important to be able to escape quickly in the event of a fire. Therefore, keep a window key in every room and ensure that door keys are easily accessible near to your front and back doors. You should also develop and practise a fire escape plan for your home and make sure that all members of the household including visitors know how to quickly and safely evacuate the building. Cllr Brian Spurr, Executive Member for

Sustainable Communities Services at Central Bedfordshire Council said: "By taking very small and simple steps we can help reduce the amount of burglaries that take place around Central Bedfordshire...everyone needs to be vigilant and take measures to ensure that they do not become a victim of crime."

Other ways to deter burglars include:

- \* Fit outside security lights and put gates across side passages;
- \* Leave lights and a radio on when you go out;
- \* Double check fences and boundaries for weak spots;
- \* Fit security features such as window locks, patio door locks and a burglar alarm;
- \* Never leave keys under mats and flower pots, it's the first place burglars look;
- \* Keep an eye out for strangers in your street, especially if they are selling property door to door. If you are suspicious, call the police;
- \* Help protect your neighbourhood by joining Home Watch, or becoming a co-ordinator.

---

## **IN MEMORIAM—MR CHRIS LOCKE**

---

Many people in the local area may remember Mr. Locke, who retired as Head of Ashton Middle School in 2007 after 18 years there.



He died on Sunday 31st July following breathing problems associated with Parkinson's Disease.

He will be remembered by many as a strict but caring Head Teacher who was greatly respected by adults and pupils alike. He gave much of his time to supporting pupils at the school in many ways both in and out of school. He was also very involved in Harlow Rugby Club, supporting young people there too. *The photo above shows him preparing to hand out prizes at a School Fun Day.*

**Frog and Rhubarb**

The Frog's annual Darts Tournament took place on Thursday 7 July. Everyone enjoyed a great night of darts and free food. Rob Davis won the first prize of £40 with Iain Duncan coming second. They also both scored an amazing 180 on the night winning them a further £20 each.



On Saturday 23 July the pub held a Mad Hatters Kids Tea Party. Entertainment was provided by Mrs Marvel and included a magic show, balloon animals, puppet show, party games, a live rabbit and a disco. All the children had a great afternoon of fun followed by a snack tea. It was great to see so many children turn up in the Mad Hats they had made. *(see photo above and also in the inside front cover)*

Slip End Scout Group held a Charity Car Wash in the Frog & Rhubarb car park. Plenty of people took their cars along and left with them gleaming. The Scouts raised £120 that they will use to buy much needed equipment.

Everyone enjoyed the Frog's Beach Party with pitchers of cocktails, a cook your own

barbecue and a limbo contest all accompanied by the sounds of the Caribbean. It was a fantastic fun evening with most people turning up in their shorts or hula skirts.

**Forthcoming Events @ The Frog**

The latest promotion at the Frog & Rhubarb has been launched offering **2 Courses For £10**. There is a huge choice of dishes to choose from and the offer is available Sunday through Thursday from 5pm until 10pm. For those with a really big appetite, there is the option of having 3 courses for just £13. You could enjoy the last few days of summer eating your meal in the pub's courtyard garden or make use of their dining area.

On Saturday 17<sup>th</sup> September the Frog is holding its annual **Race Night** in aid of FoSELS at Slip End Lower School. Bets will be £1 each and you can back as many or as few horses as you like. The prizes are all cash and include a £60 tricast prize. There will be eight races throughout the evening and the betting is really simple. If you are a novice, staff will be on hand to help you out with any questions so don't be afraid to pop along and join the fun from 8pm.

The Frog & Rhubarb has a computer with internet access which is free for all



customers to use. If you don't have use of a computer at home, why not make use of this facility while enjoying a coffee or pint. They also have free WiFi for use by those with laptops or smart phones.

Up to date information on events and offers can be found on the pubs website [www.frogandrhubarb.co.uk](http://www.frogandrhubarb.co.uk)

## Plough



Congratulations to Lisa & Matt Rocha-Parker on their marriage. They had their wedding reception here at The Plough, in the Marquee. The Marquee was decorated with a star light roof with drapes, flooring and round tables with white coverings and pink decorations. The weather was also a nice and sunny day. The happy couple arrived here with two white horses and a carriage. After photos in our garden, the guests were seated and served by our staff a three course meal in the marquee. The celebrations continued into the evening, by laughter, fun and dancing. We wish them a very happy and long marriage.

Also we had a christening in the Marquee, with a meat buffet and a bouncy castle. Everyone enjoyed themselves and had a great day!!

Happy 70<sup>th</sup> Birthday to Mrs Masters, who celebrated her birthday here with her friends and family with finger buffet, music and all had a wonderful time.

Well done to the Plough Domino Team!! With our Captain Eddie, they have brought home 3 trophies this year, which have taken pride of place in our trophy cabinet for all to see!

For next season our Captain will be Jack Turner and Eddie George will be our Vice Captain.

Our Marquee is available to hire during the summer months for all special occasions. Check out our website for more details [www.theploughwoodside.co.uk](http://www.theploughwoodside.co.uk)

The Christmas menu is available now—see the latest advert for details.

## Rising Sun

Despite the awful weather several hardy souls arrived at the pub to set up stalls on the morning of the Fun Day. Dave had kindly put up a giant gazebo to shield us from the rain – stalls included a Fairy Stall which also did face painting, tombola in aid of Chatty Club run by Millie and Ann who took £148 towards the Chatty Club funds – well done girls.



There were also stalls selling home made lavender bags, children's clothes and toys, bags from Thailand and other items and a nearly new stall, with a stall selling jams and marmalade made from crops grown on the allotment – so a nice mixture of items.

The outside BBQ served up some delicious lunches and by the afternoon the rain had



stopped and the children were able to enjoy the bouncy castle, with thanks to those

Our chosen Christmas charity this year is CYSTIC FIBROSIS. Events in October will be in aid of this charity.

Sat 8th Oct: ticketed themed evening with entertainment and food, final details will be available from the end of Aug (enquire at the Rising Sun)

Sat 22nd Oct: First taste banquet evening, a three course meal consisting of gourmet selections @ £20 per person, of which 30% will be in aid of CF.

Sat 29th Oct: Children's Halloween party £5.00 per child to include entertainment and food proceeds to CF. (Ask at the pub, also details to follow next month.)

who cleaned all the rain from it.

Home made cakes were also available and a drinks raffle, the winner taking home six bottles of wine. Despite the awful start to the day, a good time was had by all.

### NEW AND REGULAR FEATURES

**Chatty Club** It was good to see Cathy Pullinger (priest in charge at St Andrew's) join the Chatty Club for tea, sandwiches and cakes in the summer holidays and chat to some of the members. Cathy has recently become a grandmother for the first time and shared some photos of her new granddaughter Anna with everyone. Come and visit anytime Cathy.

First taste banquet evening : an evening of freshly cooked dishes from our own recipes to be featured in our forthcoming menus and also on our in-house special boards. We invite interested guests to participate in this event and be our critics by your honest opinions of taste and presentation of the evening's menu. This new venture will be on a regular 2 monthly slot. It will be at a very special price for a 2-course meal and there will be limited seating and times, only available through advance booking. The first one will be Sat 12th Nov.



Friday evenings: complimentary late evening bar supper and 80's music

Sunday evenings: complimentary cheese and crackers board from 8.00pm

We will be introducing a new and finer menu from October for lunch and dinner, pop-in for a copy of the new menu available from mid Sept and claim a 10% discount of food in Oct with voucher.

### CHRISTMAS 2011

### Forthcoming events

Sun 25th Sep: Bobby George mini darts marathon. starting at 5pm. come join in the fun of throwing some "arrows" for continuous 4 hours to raise funds for the Bobby George national charity, (a charity in aid of disabled athletes in sports across the UK) players and supporters welcome. Enquire at the Rising Sun for more details.

We are happy to announce that we will be open on Christmas day for food. Christmas day fare will be at £45.00 per person for a 4 course meal plus coffee and tea to finish. sittings are as follows : 12.30pm to 2.00pm and 2.00pm to 5.00pm of which the latter already has limited places left.

We are also taking bookings now for Christmas party bookings for week commencing 28th Nov. Menus and more details to follow.





## The Plough

Woodside, Nr Slip End  
01582 720923

Family Pub, Dining Room  
Garden & Play area

Lunches & Evening Meals  
Booking Advisable

Our restaurant is generally closed on Sunday  
& Monday evenings unless bookings are made.

We take bookings for large parties  
in the restaurant.

Now taking bookings for Christmas

Menu Out Now!!

Car Parking, Disabled facilities,  
and Baby Changing facilities

### Traditional Sunday Roasts

Inc Vegetarian & Children's Roasts

### Happy Hour Menu!

From £4.25 Main meal Tues-Fri 5-7pm

### Join Our Discount Club!!

Get 25% off after joining first time  
thereafter 15% off our Restaurant Menu!!

Frog &  
Rhubarb  
country pub & dining

01582  
452722

CHARITY  
RACE NIGHT

8pm Sat  
17th Sept  
£1 A Bet  
Cash Prizes

2  
Courses  
£10

3 Courses £13

Sun - Thurs, 5pm-10pm

## **RAGS WALKS IN JULY AND AUGUST**

For the **July** walk, we met at the car park opposite the church in Woburn and set off up the road that heads out in the direction of Heath and Reach, crossing the road after a while to join a footpath across the fields. As we crossed one field there was a good view down the hill to the Woburn Estate and



House. We then looped back round to join one of the paths that runs inside the Deer Park itself and were rewarded with more views of the house, lake and a number of deer with impressive antlers. There were ten walkers but some



were unable to stay for lunch.



Pubs in Woburn are pleasant but small and rather expensive so for a change, we returned to the Church where Lorna and her husband produced an excellent lunch for sixteen of us. We had a choice of lasagne or steak and ale pie followed by a choice of desserts. Bob and Jean's daughter joined the walkers and the

rest of the family arrived for lunch since it was Jean's birthday.

*Alison Wilson*

**August's** walk found 11 of us leaving the car park at Sundon Hills Country Park to start our walk, after noticing that there was only one picnic table for the planned picnic on our return! It was not cold but very overcast with a threat of rain. This was a walk that had many gradients, but, at every turn, we were rewarded with wonderful views.

We came upon a badger sett and lots of different wild flowers, as well as some beehives, which we were careful to avoid. In a piece of woodland called The Firs, our leader pointed out the bullet holes in some of the trees, as the area had been used as a firing range during the war. Another point of interest, although much more sobering, was a poignant memorial by the main road of a young man who had died in a car crash at the age of just 17.

During the late 1700's the Sundon Parish Register shows that more than 1 in 5 villagers lived to be over 80, when the average life expectancy was 41 years – what was their secret?



*A Picnic with a view!*

We arrived back at the picnic point to find a wonderful picnic set out before us, thanks to Lorna – unfortunately she was unable to provide portaloos! A lovely walk was followed by some relaxation with friends and food.

*Pat Isger*

# The Rising Sun

*The Community Hub*



## Rising Sun Pub

*Real Ale  
Real Food  
Real People!*

**1 Front Street  
Slip End**

**☎ 01582 482354**

## Value Home Cooked Food

*Weekdays: Lunches 12 noon - 2.30pm  
Dinners 6 - 9pm*

*Saturdays: 12 noon to 7pm*

*Sundays: Lunches 12.30 - 7pm*

*Mondays 6 - 9pm*

*Malaysian Food Platter just £5!*

*Specials board including Steak & Seafood*

**Sunday Special**

*2 course Sunday Roast £8.00 per person  
with a choice of roasts plus free dessert!*



## ***RELAX!***

***We have a man that can...***

**Collections, deliveries, removals,  
furniture repair & restoration, flat  
packs, gardening and all manner  
of jobs work undertaken.**

For further information

**CALL Paul Goodaker on 07979057393**

**Can't find the time  
to do all those jobs  
around your home  
and garden?**



I have a passion for islands. Their history is absorbing and very often, their flora and fauna is unique. Reaching them is often a challenge and you have to love travelling by sea. The ultimate challenge in the British Isles has to be St. Kilda and I have wanted to visit it for many years. It is way to the north-west of Benbecula; the outer, Outer Hebrides. You cannot go and stay there as the St. Kilda group of islands are a World-Heritage Site, maintained by the Scottish National Trust. The only way to visit is as part of their three annual work-parties. These are over-subscribed and the application form is as daunting as for any teaching job. The cost of joining a work-party is more than flying to Australia. I was amazed to be accepted and so had about three months to prepare. I needed new equipment and I needed to reach Leverburgh, Harris by myself. So, there, on the night of May 10<sup>th</sup>, I met the other nine workers, the Leader and the Cook. The weather was bad and we were late setting off on May 11<sup>th</sup>. It was not too rough, so the journey only took 3½ hours.

My first impression was not that it was a place of great beauty! It was pouring with rain and the first buildings we saw were those of the army base. The ground was marshy and there was evidence everywhere of the Soay sheep! Everything had to be unloaded and carried to the restored cottages (including all our food for two weeks with extra for emergencies!)

St. Kilda consists of four islands and several stacs. Hirta was populated until 1930 when the islanders requested the Scottish government to re-home them on the mainland. The population was diminishing and the last straw was an islander dying because of the distance from medical facilities. The village street consisted of 16 cottages, interspersed with the ruins of black houses. Six of these cottages have been restored for the work-parties. Our work was varied! The St Kildans had built structures called cleits for storage (about 1300 of them) and the ones nearest the village are repaired and maintained. These are stone structures with turf roofs. Restoring the roof involved sifting through the old material and we found relics of stone tools and pottery. One day was spent removing boulders from the jetty after a storm. The village has been likened to Machu Picchu and stone waterways had to be excavated and cleaned. Cleaning the artefacts in the Museum was a scary task because they are irreplaceable and

very delicate. Each day, 2 people were on cooking and cleaning duties and I was in my element here. I traded with the outdoor-loving, strong men and took their turns in the kitchen. On the cook's days off, I did all the cooking – a joy, only cooking for 12 in a state of the art kitchen.



*The village "street"*

In our free time, we walked and explored. The history goes back to Viking times and the ruins of all stages can be identified. There was also the wreckage of WW2 planes on the hillsides. This all sounds fabulous, but the islands are very dangerous places with their own weather systems. The cliffs are enormous and sheer. The ground is very marshy and slippery. The winds are so strong that I was completely blown over 3 or 4 times, so cliff edges were to be avoided.

The seas were enormous and awe-inspiring. Marooned took on a new meaning as no boats could reach us and the helicopter that travels to the army base twice a week was unable to weather the storms. The base is ugly but necessary. It generates enough electricity for the National Trust as well; it deals with rubbish; it employs a Nurse. Without these, there could be no work-parties.

Did I enjoy the experience? I found it frustrating because there were things I wanted to do and see, but was prevented by the appalling weather. My admiration for the St. Kildans has grown because they had to live with the weather – the cows still had to be milked every day. There is so much archaeology to be discovered – a highlight was when the piece of pottery I found in the street was identified as Mediaeval.

Would I like to go back? I might apply again in 2012 and hope for better weather, but I was nearly the oldest and walking in Bedfordshire is not the best preparation for the gradients.

The uncertainty over our return journey was very hard but I was undaunted by nearly 5 hours in huge seas and I was not sick! I certainly want to return to the Hebrides one day.

*Liz Higgins*



*Working party in wet weather gear (Liz in the centre)*

---

## **PARISH PLAN**

---



The photo (above) shows most of the members of the Parish Plan team.

(back) Sue Briggs, Jill Acton, Steve Baird, (front) Carol Brennan, Rosemary Wickens, Ken Crossett and Steve Fuell.



The photo to the left shows Helen Wall, the one member who was not able to attend the last meeting.

The last meeting of the Parish Plan committee was held at The Plough and a copy of the Parish Plan booklet was on hand for the members to view. We finalised the inside contents and all agreed it could now be sent to the printer for publication. After many months of meetings, discussions, deliberations, questions and compromise we had come to the end. I don't think anyone expected the Plan to take that long but to do things properly everything had to be done in the proper order with consultations from parishioners, questionnaires sent to every household and results entered onto a computer for analysis. Then every section discussed and the details composed for entry into the booklet. Photos from around the four parishes were taken and included into the final result.

We hope you will agree it makes interesting reading and it has now been passed to the Parish Council and the Community Projects Group for them to begin their deliberation as to what tasks they can carry out first. There will be copies of the final booklet in all the pubs in the village, the corner shop, the Church, the school and the mobile home offices. The plan is also available to view on the website [www.slipend.co.uk](http://www.slipend.co.uk)

Thanks to the committee for all their hard work, attending meetings and producing our Parish Plan for the next five years. It will be interesting to see how and when all the suggested recommendations are brought to fruition. It is hoped that the group will meet up annually to see how the Plan is working.

*Sue Briggs*

## **HARVEST SUPPER**

**Friday 30th September**

**Slip End Village Hall**

**7pm for 7:30pm**

Tickets available at Slip End Stores soon or contact a Church member for details

## **WORLD'S BIGGEST COFFEE MORNING**

*The letter below was sent to the Parish Council Clerk and we thought people may like to take part in this excellent fund raising activity in aid of a worthwhile cause.*

I am a volunteer for Macmillan Cancer Support in Cambridgeshire and Bedfordshire. We are trying to spread the word about Macmillan's World's Biggest Coffee Morning and wondered if you might be able to include a piece about the event in your parish magazine/newsletter.

This year is Macmillan's centenary year and we would like to encourage lots of local people to join us to celebrate by holding a coffee morning to raise funds for people affected by cancer...

### **World's Biggest Coffee Morning is 21 and you're all invited!**

Macmillan Cancer Support's flagship event, World's Biggest Coffee Morning has reached its 21<sup>st</sup> year and we are asking you to join us and help those affected by Cancer by hosting your very own celebratory Coffee Morning.



WBCM is the UK's third biggest one day fundraiser. Last year 751 people hosted a coffee morning in Cambridgeshire raising more than £130,000. Together 43,000 people registered to hold a coffee morning across the UK, raising over £8million.

This year the event takes place on Friday 30<sup>th</sup> September and we're aiming to celebrate in style and hope you can join us. There are 2 million people living with cancer in the UK, so we need to raise even more money to pay for our vital cancer support services.

Taking part in World's Biggest Coffee Morning is really simple – choose a date that suits you, choose your event and send out invitations to raise the vital money to support people affected by cancer. More importantly WBCM is a chance to get friends and colleagues together to have fun”

Whether it's a traditional coffee morning at home, work or school, or something different altogether – a garden party, pub quiz, or karaoke night - the main thing is getting together with friends and knowing that your collective efforts are making a huge difference to people affected by cancer.

Register at [www.coffee.macmillan.org.uk](http://www.coffee.macmillan.org.uk) or for more information contact Michelle Pullen, Fundraising Manager on 01480 408982/ [mpullen@macmillan.org.uk](mailto:mpullen@macmillan.org.uk)

**Roisin Henderson (Events Volunteer)**  
**Macmillan Cancer Support**  
**12 Eaton Court Road**  
**Colmworth Business Park**  
**St. Neots**  
**PE 19 8ER**  
**Tel 01480 408980**

I know at least one family which has recently availed themselves of the services of these dedicated people and they have nothing but praise for them! If you don't want to run a coffee morning yourself, look on-line and find a local event to attend—I'm sure there will be plenty. Go along, indulge yourself a little and know that you are doing something to raise money for a good cause.

*Alison Wilson*

## **FRIENDSHIP CLUB**

If you are a pensioner and looking for something local to do, why not come along and join us at the Village Hall on Thursday afternoons from 2—4pm. It's only £10 a year for membership and 40p for tea and biscuits every week. For any more information please ring Pam on 01582 452978.



### **Get involved in influencing policing in Central Bedfordshire**

Are you interested in policing in your local community? Could you be an independent advisor to Bedfordshire Police?

Bedfordshire Police is looking for volunteers from across Central Bedfordshire to become members of a local Independent Advisory Group (IAG).

An IAG provides independent advice to the force aimed at improving the quality of policing services to all communities. They also help the police better understand local communities and build the right kind of service for the people of Bedfordshire.

Each part of the County is now fully represented having an IAG in Luton, Bedford and Central Bedfordshire.

Theresa Peltier, Head of Diversity and Inclusion at Bedfordshire Police, said: "I would encourage anyone with an interest in policing in their local community in Central Bedfordshire to think about getting involved and ultimately helping to shape how police services are delivered in their area.

The only criteria for being an Independent Advisor is that you:

- Are part of a community being served by Bedfordshire Police
- Have knowledge of the community you represent
- Are flexible to attend meetings on an ad-hoc basis
- Are independent, i.e. can provide advice from an external perspective, uninfluenced by the police or other agencies.

An IAG member could be involved in a wide variety of ways, such as advising on policy and strategy, providing advice during critical incidents and participating in and evaluating training.

If you are interested in becoming a member of the IAG please contact Maria Hobdley, Diversity and Inclusion Officer at [maria.hobdley@bedfordshire.pnn.police.uk](mailto:maria.hobdley@bedfordshire.pnn.police.uk) or on 01234 842815.

---

### ***BEDFORDSHIRE POLICE FLIGHT PATH PROTECTION TEAM***

---

Two members of this team (formerly called the MANPAD Project) gave a presentation to the Parish Council, firstly showing a short video putting their objectives into context. The video was about terrorism worldwide with particular reference to terrorist incidents linked to aircraft. They explained that a MANPAD is a surface to air missile. They then explained the aims of the project which is part of a Government led initiative to engage with local communities. They pointed out that the security threat to the UK has not been raised and there is no intelligence to suggest any likelihood of an attack.

The team is concerned with the safety of aircraft arriving and departing from Luton Airport. They regularly check rural areas in the locality for anything suspicious. The aim of the presentation was to raise the awareness of the project through community engagement. Households, especially if overlooking fields or rural locations, may receive leaflets asking them to consider being extra eyes and ears, reporting anything suspicious to them. As always if you notice any form of suspicious behaviour, observe safely from a distance then report your concerns if you think it is necessary.

They ask that if you should see anything that could affect the security of Luton Airport, you call the Luton Airport Anti terrorism hotline on 01234 842706.

If you would like to know more, or if you feel you could contribute to the initiative then the team can be contacted on

[mpt@bedfordshire.pnn.police.uk](mailto:mpt@bedfordshire.pnn.police.uk)



It was time for the committee to have another meeting and discuss any problems the Parish News might have. Everyone agreed it was running smoothly and we welcomed our latest recruits who have now been with us for several months. Alison Wilson, who is sharing the editor job with Sue, taking alternate months to prepare the magazine for printing and Katrina Doubleday who is learning all about the aspects of the

advertising side of the magazine. Both are doing a magnificent job so keep up the good work girls and many thanks for all your hard work and commitment.

**Sending items to Parish News**

Please note: if sending items by email for the parish news please use the email address :-

**parishnews@slipend.co.uk**

This address forwards messages to both editors ensuring that we both receive an item, whereas using our personal email addresses may mean something is missed.

Thank you , Alison & Sue

**LAUGHTER**

Ladies, don't forget the rummage sale. It's a chance to get rid of those things not worth keeping around the house. Bring your husbands!

**Smart Houndz**  
The smartest houndz in town  
**Professional Dog Grooming**  
All sizes and breeds welcome  
Hand stripping, nail clipping scissoring & clipping  
Contact  
**Paul Wager (Caddington) 07875 409933**  
City and Guilds Level 2 & 3 Qualified  
www.smarthoundz.com  
paulmwager@hotmail.com

**Home Renovations**

- Kitchens designed & fitted
- Doors hung internal & external
- Bedrooms & bathrooms

**All forms of property maintenance**

**CALL Martin Tommey**  
**01582 517105 or 07968 756180**

**freecycle Luton**

**Reduce waste that goes into landfill by offering it to your local community for free!**

Post your unwanted items on <http://uk.groups.yahoo.com/group/FreecycleLuton/> then an email is sent to all members who make contact to arrange collection.

Everything **must be free**, preferably local, although some things can be posted.

**SLIP END VILLAGE HALL**  
*Your Village Hall*

for Dances, Receptions & Parties  
Facilities for the disabled  
*For bookings contact*  
*Gill Plummer 723109*  
*9 Markyate Road, Slip End*



**DON'T FORGET**

# **BINGO**

**AT THE VILLAGE HALL  
THURSDAYS AT EIGHT**

**Slip End and District Association**



## ***MP's Contact details***

*Gavin Shuker's  
local office is located at:  
3 Union Street*

*Luton  
LU1 3AN*

*Email: [gavin@gavinshuker.org](mailto:gavin@gavinshuker.org)  
Website: [www.gavinshuker.org](http://www.gavinshuker.org)*

*For advice surgery appointments  
call 01582 457 774*

## ***SLIP END PETER EDWARDS HALL & PLAYING FIELD***

*Ideal for children's & adult's parties, meetings, etc.  
Kitchen facilities with catering service available  
Available for various sports activities  
Excellent sports changing facilities  
Facilities for the Disabled  
For Bookings: ☎ (01582) 767916  
or 07956 463128 (not after 9pm)*

***Central Beds  
Councillor's  
Surgery  
Heathfield School  
Caddington***



*Meet Ruth Gammons & Richard Stay  
to discuss local matters which are of  
your concern or interest.*

*First Saturday of each month  
10am to 12 noon*



# **NEVILLE FUNERAL SERVICE**

***Serving the people of Luton & surrounding areas for 130 years***

***Independent and family owned***

**Floral and Memorial Service  
Private Chapels of Rest  
24 hour personal emergency service**

**☎ 01582 490005**

***Neville House***

# DIARY - *If you would like your events included, please contact the Editor*

## **September**

- 3rd *Meet Central Beds Councillors: Heathfield School Caddington, 10am to noon*  
11th *Café Church 10:30 am St Andrew's*  
13th *Community Projects Group meet at the Slip End Social Club 7.30. All welcome!*  
17th *Charity Race Night (for FoSELS) 8pm Frog & Rhubarb*  
19th *Gardening Club 8pm Village Hall*  
20th *Women's Institute Birthday Party*  
25th *Mini Darts Marathon 5pm Rising Sun*  
30th *Harvest Supper 7:00 for 7:30pm Village Hall*

## **October**

- 1st *Meet Central Beds Councillors: Heathfield School Caddington, 10am to noon*  
2nd *Harvest Service 10:30am St Andrew's*  
8th *Themed Meal (details TBA) Rising Sun*  
11th *Community Projects Group meet at the Rising Sun 7.30. All welcome!*  
22nd *Safe at Home Day 10am - 4pm Village Hall*  
*First Taste Banquet Evening Rising Sun*  
27–28th *Holiday Club at St Andrew's*  
29th *Children's Halloween Party Rising Sun*

## **November**

- 5th *Meet Central Beds Councillors: Heathfield School Caddington, 10am to noon*  
8th *Community Projects Group meet at the Plough 7.30. All welcome!*  
21st *Gardening Club 8pm Village Hall*

## **December**

- 3rd *Meet Central Beds Councillors: Heathfield School Caddington, 10am to noon*  
13th *Community Projects Group meet at the Frog & Rhubarb 7.30. All welcome!*

## **Wheelie Bins: see below:-**

**Black Bins & glass:** Put out on Friday 2nd, 16th & 30th Sept

**Green and Orange Bins:** Put out on Friday 9th & 23rd Sept



## **Items for the next issue to us by 15th September**

Want Parish News delivered monthly? Contact Alan Buttery at 1 Claydown Way (01582 724527), alanjan@buttery400.fsnet.co.uk.

Anything interesting to report about village activities, photos, holidays, etc?  
Please contact us, letters and e-mails are encouraged.

Views expressed by our contributors are not the Editor's own. Articles should be sent by the 15th of the preceding month to Sue Briggs, 4 The Oaks, Slip End or Alison Wilson 23 Claydown Way, Slip End or e-Mail [parishnews@slipend.co.uk](mailto:parishnews@slipend.co.uk)

Advertising queries to Katrina Doubleday 07753 168443 or email [hatsbydoo@btinternet.com](mailto:hatsbydoo@btinternet.com)

Parish News is grateful to our advertisers for their contributions. Please support them.



Jonah Man Jazz performed by Aley Green Church Sunday School

Smelling the roses at Chiswell Green and the wedding of Stuart Eaglesham & Angela Chambers at St Andrew's





**SUBARU**



ISO 9001 (2000 revision)  
Certificate Number 424

**ISUZU**

- \* **New Cars**
- \* **Used Car Sales**
- \* **Repairs**
- \* **Spares & Service**

# **Slip End Garage Ltd**

**Markyate Road**

**Slip End**

**Service: (01582)  
481600**

**Sales: (01582) 456888**

**Parts: (01582) 411421**

**Our Service Centre is**

**e-Mail: [info@slipendgarage.co.uk](mailto:info@slipendgarage.co.uk)**

**[www.slipendgarage.co.uk](http://www.slipendgarage.co.uk)**

**Catering for all your motoring needs since 1939**