



Aley Green - Pepperstock  
Slip End - Woodside  
**PARISH NEWS**  
September 2012  
75p where sold







**Open Gardens 2012**



## Gardening Club

It has been a pretty busy summer since the last report, the highlight being the sixth biennial Parish Open Gardens Day on Sat 30th June. We once again had good weather and over 120 people visited the nine Open Gardens, which contributed to a very successful day, making a profit of £820. (£370 was raised from garden entrance donations and £450 from refreshment sales and other stalls at open gardens) The funds raised will help to pay for future Guest Speakers at garden club meetings and their travelling expenses. It was good to have six new gardens out of the nine which opened, making for a most enjoyable and interesting day for all visitors. People gained ideas for their own gardens also got to know/make friends with other people in the village. The Committee wishes to thank those who opened their gardens, people who helped them on the day also those who helped man the various stalls. The Committee and people who opened their gardens had the opportunity to see the “open gardens” on the following Tuesday and Wednesday evenings.

Some of you may remember Keri and Pete from Prebendal Drive, who opened their garden in 2008, and moved to Welwyn over 3 years ago. Members visited them when they opened their garden as part of Welwyn Festival Week. (A different garden was open each day of the week!!) They had transformed the garden since moving in, having various perennial borders, a water feature/pond, some substantial trees and different seating areas to sit and enjoy the garden. In July members made another return trip to the Kings Arms Gardens, Amptill to enjoy the garden in summer.

A very good presentation was made by Guest Speaker Kathy Brown at the July GC meeting on “Creative Container Gardening”. On Sat 4th August, members and guests enjoyed a very interesting VIP guided tour of Woburn Abbey Gardens, led by Martin Towsey, Head Gardener. (He gave an excellent presentation at a previous Gardening Club meeting.)

The tour included areas of the gardens which are not normally open to the public also we were told some of the history of the gardens which are being renovated back to their former glory.

The next visits are given below:-

Sun 9th Sept. Wrest Park Entry £8, £7.20 for Concessions, English Heritage Members Free  
Thurs 18th Oct Arley Arboretum (Theobalds Coaches) £27 (Concessions £26)

*PN Gardening Correspondent*

### **Slip End Gardening Club**

**Monday 17th September**

**Slip End Village Hall 8pm**

**Guest Speaker—Stuart Philips**

**The Mysteries of Pruning**

**New Members welcome**

**Guests/ visitors £2**



## Slip End Village Day 2012

Well, by now I'm sure you all know that Slip End Village Day had to be cancelled this year. The playing field behind St Andrew's Church was extremely waterlogged after all the rain we had in June and July and the week before village day it was clear to the committee that the water wasn't going to drain away sufficiently to allow it to be used.

A change of venue was considered, splitting the location between the Rising Sun car park and the Village Hall and their car park. Lily kindly agreed to the use of her car park if needed but eventually it was established that the floor space wasn't big enough for the attractions booked, and there were some concerns raised by third parties over Health & Safety. Other venues within the parish were suggested but they just weren't viable in the end. A postponement to September was also considered but a date couldn't be fixed where the bars, band, hall, field, bouncy castle and some other attractions were all available, so the committee took the difficult decision to cancel the day altogether.

We went ahead with the raffle, the draw took place on Saturday 21<sup>st</sup> July 2012 at the Social Club at midday. Thanks to the businesses and local residents that kindly donated the raffle prizes, they are listed at the bottom of the page. My thanks also to Carol Brennan for organising the tickets and taking the licence in her name, to everyone who sold tickets for the day, but my special personal thanks to Carol Patterson who sold a massive amount of tickets at the Social Club, she is a star – I knew I'd asked the "best man" for the job! Thank you, Carol.

So that's it for another year. We join the likes of the Great York Show, the CLA Game Fair and the Redbourn Steam Rally as 'shows cancelled due to bad weather' in 2012. Village Day 2012 final figures show an overall loss of £330.00, which was better than the initial potential loss of £2,000. Maybe 2013 will be a better year.

My thanks to the committee members for their support, and special thanks to my partner Rob for his unending support and brainstorming!

Our next Community Projects Group meeting is on Tuesday 11<sup>th</sup> September at 7.30pm at the Social Club – we're a friendly bunch, we have money to spend and need input from you as parishioners as to what we do with it – come to the meeting....there's alcohol available!

Thanks to the following people for their very generous raffle prize donations:- London Luton Airport, Citroen Garage, Slip End, Gavin Shuker & House of Commons, L'Olivo Restaurant, Wheathampstead, Hartwell Ford, The Slip End Gardening Club, Jane @ Mignonette Beauty & Bridal, Jolie Beauty, Harpenden, The Frog & Rhubarb and Katrina Doubleday.

*Sarah Minnighan, Village Day Organiser*

## Good Neighbour Scheme

Are you interested in helping folk in the parish? Could you help them with occasional lifts to doctors, shops or hospital, dog walking, filling in forms, small household repairs, collecting prescriptions?

We want to set up a Good Neighbour Scheme in our Parish (Slip End, Aley Green, Woodside, Pepperstock). Caddington has a scheme – Caddington Care – that has been running very successfully for a couple of years and we would like to get our own scheme up and running to help our own parishioners.

We have a meeting on Monday 24<sup>th</sup> September 2012 at The Village Hall at 7.30pm. It'll be very relaxed, refreshments will be available, this gives us a chance to let everyone meet each other and get a committee started.

Justine Hunt from Beds Rural Community Charities will be there to help us with the start up process, although we already have boring yet important things set up (bank account, insurance). We have 20 parishioners already on the list, come along, the more the merrier!

*Sarah Minnighan CPG Chairman 07868 742 904*

## *St Andrew's Church Dates for September 2012*

- Sun 2nd:** 10.30am: Informal Communion with baptism "Jesus gifts us all to share in ministry"
- Wed 5th:** Little Stars – Trip out: Meet at Stockwood Discovery Centre at 10.30am – see poster in church for full details
- Sun 9th:** 10.30am: Morning Praise with baptism "Jesus welcomes the children" (Band)
- Wed 12th:** 10am: Little Stars "Ruth, Naomi and Orpah" - Activity: make a family
- Thurs 13th:** 9.30am: Morning Prayer (a short quiet service of liturgical prayer)
- Sun 16th:** 10.30am: Holy Communion "Love the Lord your God"
- Wed 19th:** 10am: Little Stars "Ruth & Boaz"- Activity: harvest pictures
- Fri 21st** 7:00 for 7:30 Harvest Supper
- Sun 23rd:** 10.30am: Harvest Praise "Action for Hope" (Organ & Singers)
- Tues 25th:** 2pm: Caddington Care Home Service
- Wed 26th:** 10am: Little Stars "Noah and the rainbow" - Activity: making a rainbow
- Fri 28th:** 2pm: Woodside Care Home Service
- Sun 30th:** 8.30am: Said Communion "Saved by Grace"
- Sun 30th:** 10.30am: Morning Praise – **Come To Church Sunday** "Saved by Grace" (Band)

### **St Andrew's Woodside**

Would like to invite you to Come to Church  
on Sunday 23rd September  
at 10.30 am



### **Harvest Festival**

You are most welcome to bring along harvest produce to decorate the church as we give thanks for God's generosity.

(to be distributed to people in the parish and to local charities.)

There will also be a collection in aid of the Bishop's Appeal, a charity called Action for Hope which helps people in the Dominican Republic adapt to the effects of a changing climate in the Caribbean.

*We are here as God's family, to draw closer to God, to live out our faith and welcome all into the love of God!*

## Worlds Biggest Coffee Morning



Friday 28th September 2012  
10am to 1pm  
Peter Edwards Hall  
Slip End Playing Fields  
Church Street  
Slip End

Call Jenna on 07973 563379

Bouncy castle, cakes, tea  
and coffee.

**Come and support this  
wonderful charity!**

Macmillan Cancer Support, registered charity in England and Wales  
(241017), Scotland (SC039568) and the Isle of Man (884)

### Editor's Notes

Welcome back to everyone after our short summer break. We hope those of you who have been away on holiday have returned refreshed and ready for the rest of 2012.

It has certainly been a busy few months—especially for sports lovers! Wimbledon, Cricket, Olympics and by the time this magazine is out we shall be back watching the Paralympic action on our TV screens. I have never been a great sports fan—either watching or taking part but I enjoyed some of the more unusual sports on show. One interview I saw, with a sportswoman (Jessica Ennis I think) commented on the legacy for sport in this country. The interviewer asked whether we should encourage children to take part in more competitive sport... her reply was that it was more important for children to enjoy what they do from an early age and worry about the idea of competing as they grow older.

I would definitely agree with the comment, having been one of those who was never even good enough to be a reserve for any team, even

in house events. It is very disheartening to be left on the sidelines and it doesn't encourage interest in sport! My suggestion is that we go out, get active in any way we can and enjoy the fresh air. The competitive spirit can grow from there!

If you are interested in being active, we have many groups in the parish who participate in sports, walking and outdoor activities.

### Students and Exams

Congratulations to all students at schools and universities who have received results recently. I know that Manshead School was proud of its students' A level results and as I wrote this they were awaiting the GCSE results. Good luck to those who are off to University or colleges soon or starting new jobs.

We look forward to hearing about anyone from the parish who has graduated recently or who is especially proud of their achievements. Please send photos and a few words of explanation, so we can include them in a future issue.

*Alison Wilson*

## J&P SCAFFOLDING



**Phil Johnson**

Mobile: 07720 846963 Tel/Fax: 01582 429106



[www.Hungryhounds.co.uk](http://www.Hungryhounds.co.uk)

'Delivering quality dog food, straight to your front door'

## Hungry Hounds

Tony Hussey  
14 Meadow Road  
Toddington LU5 6BB

Mobile: 07730 744174  
☎ 01525 875345

[hungryhounds@mail.com](mailto:hungryhounds@mail.com)

Doctor M. N. Malik

## DENTAL SURGEON

*Dental Treatment & Bridge Work  
at cost effective prices*

Surgery Times

Mondays - Fridays: 6pm - 9pm

Tuesdays, Wednesdays & Saturdays: 9am - 1pm

88 Luton Road, Dunstable - Free parking at the rear

For appointments: ☎ 01582 668199

[drnmnalik@yahoo.co.uk](mailto:drnmnalik@yahoo.co.uk)



## ROBERT'S GARDENING SERVICE & MAINTENANCE

Landscaping  
Rubbish Removal  
Fencing - Weeding  
Planting Advice

*Special Rates for the Elderly*

Call Robert on  
0789 1402229

## Chiropodist

*State Registered*

*Home visits*

*Evening &*

*Weekend appointments*

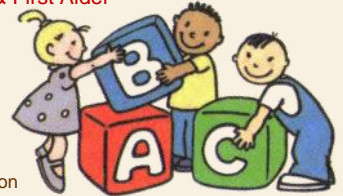
*Keith Appleby BSc (Hons), MChS, SRCh*

*Telephone: 01582 873136*

## Tiny Toes Childminding

Registered Childminder

NCMA Insured & First Aider



Sarah Saunders  
07956 119334

Based in Caddington

## Pastel Painting Artist Portrait



Dogs a Speciality - Reasonable Rates

Contact: Bea Malsbury (Slip End)

Tel: 01582 488489



## Need a reliable Window & Carpet Cleaner?

*We operate in the  
Slip End area*

*For free quotation*

*contact us on*

*01462 629302*

*07970 406 926*

## DOMESTIC APPLIANCE REPAIRS



Washing Machines, Dishwashers,  
Driers, Cookers, Microwaves,  
Fridges & Storage Heaters



**Barrie Acton**

*Slip End (01582) 728865*

*or Mobile 07802 723160*

## A. McClelland Pest Control



For fast response call  
Mobile 0777 494 8415  
or office 01582 872158

e-Mail: [a.mcclelland\\_pestcontrol@hotmail.co.uk](mailto:a.mcclelland_pestcontrol@hotmail.co.uk)



## St Andrew's Church - Words from Cathy

We have had lots to celebrate this summer. I think that the success of the Olympic Games far exceeded all our expectations. One of the things that really made the success of these games seemed to be the joy, the friendliness and the enthusiasm of the people involved, from the crowd to the volunteers. Even the press seemed to be caught up in the positive vibes.

As human beings we seem to be made for celebration and thanksgiving, it is good for the soul – both the individual and corporate soul. Praise has to be expressed, watching the crowds there was a spontaneous physical eruption of happiness, we just can't keep quiet or keep still if we are really happy about something. Celebration and thanksgiving is part of our worship at St. Andrew's, we wave banners, clap, sing, even dance in celebration of God's goodness. At the end of September we have special celebrations for harvest, our yearly thanksgiving for God's daily provision. Everyone is very welcome at the Harvest supper in the village hall on Friday 21<sup>st</sup> September and to our Harvest Praise service on Sunday 23<sup>rd</sup>.

The motto of the games was "Inspire a generation." It was difficult not to be inspired by the athletes. I loved watching the little interviews after the events and it was not just the competitors' athletic abilities that inspired me but their qualities of character: their perseverance, the ability to overcome pain and

the result of a team working together. I also found the obvious respect and concern for other competitors inspiring too, we can clearly belong to one particular country or group and live fully for them whilst honouring and giving to others too.

I think many are wondering if we will soon lose the sense of enthusiasm, the pride in our country, the togetherness that the games brought, in the realities of daily life in an economy that is struggling, a society that is changing, of personal problems that may be facing us. I guess we can't always live on the sort of "high" that the games gave us but I do think that the games can give us inspiration for our daily lives.

For instance, many of the athletes had to overcome repeated injuries. Are there obstacles that have been preventing us from achieving our goals or aims, could we find the strength and faith to overcome them. Is there someone we could encourage or thank; so many of the athletes said how much they were helped by the support of the crowd. Is there some way of supporting someone who in some way doesn't quite belong to "our group" but who we could help and honour anyway. This harvest we will be finding out more about how the lives of people in the Caribbean have been affected by climate change. We will seek to support them by financial giving but also by looking at how we can change our behaviour to reduce our carbon emissions.

The word enthuse comes from the Greek *entheos* which means "to be in God." Living in God can help us to have these qualities that would enable some of the inspiring examples of the games to change our daily living for the good of all.



obstacles, thankfulness to their family and supporters, the recognition that success was

God Bless,  
Cathy



## Gardener's Special

September hails the start of autumn, nights start to draw in and the temperature starts to fall. Lawns will benefit from a vigorous scarifying to remove debris and open the surface re-seed any worn patches and apply an autumn fertiliser.

Deadhead roses and prune climbers and ramblers that only flower once, try taking cuttings selecting strong shoots 9-12 inches long, cut  $\frac{1}{4}$  inch below the bottom leaf and  $\frac{1}{4}$  inch above the top leaf, snap off all thorns and remove the leaves apart from the top two. Insert a spade to open a slit in the soil and push the cuttings into the slit up to the lower leaf and leave for the roots to form in about 15 months.



Check stakes on all tall flowers such as dahlias and chrysanthemums as strong winds will damage the plants. If you wish to save seed from your dahlias cut off the seed pods along with approximately 9 inches of stem, tie in bunches, label and hang upside down in a cool dark cupboard to dry, then remove seeds.

Before you cut all the blooms off the chrysanthemums tie a label to the root so that you will know what colour for next year's cuttings. Gladioli will start to die back but leave in the ground till mid October to allow the corms to ripen. Daffodils and crocus can be planted this month, plant twice as deep in the soil as the size of the bulb. Alpines can be moved or repositioned towards the end of the month if they are getting crowded and this month is an ideal time to make a rockery.

Pick blackberries and loganberries as they ripen and prune as soon as they are finished, tie in new shoots to a framework to support young growth.



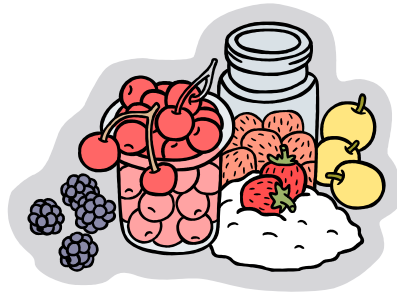
Plant out spring cabbages and finish planting out leeks as soon as possible. Sow winter lettuce such as Arctic King or Winter Density. Lift and store main crop carrots for winter use and lift any remaining potatoes for storing over the winter, discard or use any damaged by slugs or hit with the fork, as they will not keep.

As apples and pears ripen pick the best fruits and wrap individually in tissue paper and store in a cool dark shed, they will last well into the winter but check regularly and discard any that start to rot as they will affect any fruit close to them.

As fruit becomes plentiful it is a good time to start making jams and chutneys which will last until next year. If you are thinking of taking an allotment now is the time to start preparing it for next year's crops. There are plots available just ring the number on the information page of the parish news to find out more. Clear the ground as crops and flowers finish, destroy weeds and dig over as the weather allows.

This season has been a difficult one with so much wet weather but hopefully next season will be better!

*Russell Sprout*



## Joke Corner

Did Noah fish?

A Sunday school teacher asked, 'Johnny, do you think Noah did a lot of fishing when he was on the Ark?'

'No,' replied Johnny. 'How could he, with just two worms?'

# **INKERMAN**

**BUILDING & ROOFING Co.**

**EXTENSIONS - CONVERSIONS - RENOVATIONS**

- ✓ Restoration ✓ New Build
- ✓ Flat & Pitched Roofing
- ✓ All General Building Work
- ✓ Painting & Decorating
- ✓ Electrical Works & Plumbing
- ✓ Brickwork Contractors
- ✓ Patios & Driveways ✓ Fencing
- ✓ Groundworks/Drainage
- ✓ Insurance Work
- ✓ Garage Conversions
- ✓ Public Liability Insurance

**EXTENSIONS • CONVERSIONS • RENOVATIONS**

[www.inkermanbuilding.co.uk](http://www.inkermanbuilding.co.uk)

**The Complete Design  
Plan-Completion Service Included**



**Tel: 01727 835702 or Mobile: 07774 955255**

**Tel/Fax: 01582 876509**

Email: [info@inkermanbuilding.co.uk](mailto:info@inkermanbuilding.co.uk) • 46 Church Road, Slip End, Bedfordshire LU1 4BJ

# NEVILLE FUNERAL SERVICE

*Serving the people of Luton & district for 130 years  
Independent & family owned*

Floral & Memorial Service  
Private Chapels of Rest  
24 hour personal emergency service

 01582 490005

*Neville House, Marsh Road Leagrave, Luton, LU3 2RZ*

**Richard Gurney & Son  
Contracting Services**  
Longview, Luton Road, Markyate

*Tree Surgeons & Fencing Specialists  
Hedge Trimming & Tree-stump removal  
Wood Chippings (good for mulching)  
Logs for Sale*

☎ (01582) 840407

*Established 1970 - Fully Insured*

**REFLEXOLOGY**

This complementary therapy works on the feet to aid healing to the whole person. It helps us to cope on physical, mental and emotional levels, encouraging healing and maintaining health. Reflexology may aid:

*Stress-related conditions • Back Pain • Migraine  
Fertility • Sleep disorders • Hormonal Imbalances*

*www.Starlighttherapy.weebly.com*

*Call Lyn on 01582457815 or 07926367810*



**PROBLEMS  
WITH YOUR  
PC OR  
APPLE-MAC?**



*For expert advice & trouble shooting  
call Tony Glynos on 458353  
tony.glynos@talk21.com*

**THE  
FRAME SMITH**

**Beautiful Bespoke Picture Framing**

*Free local service in your home with free collection & delivery  
or visit me by appointment at my workshop in Slip End*

Free Estimates & Advice  
Call Anthony Smith  
The Frame Smith

Daytime: 07976 830906 After 6pm: 01582 424516



**Utility Engineering Services**



**Power  
Failure?**



**All electrical works carried out including:  
24hr call-out, rewires, testing,  
extra sockets etc.**

**Contact Paul**

☎ **01582 450800**



*Slip End & District Association  
**BINGO**  
at the Village Hall, Thursdays at Eight*

**JOHN SAUNDERS & SON  
Incorporating E. Franklin & Co.**

**FUNERAL DIRECTORS**

48 Duke Street, High Town, Luton



☎ 731696

*Day & Night Service  
Monumental Services  
Members N.A.F.D.  
Prepaid Funeral Plans available*



# QUIZ NIGHT

**FRIDAY 21<sup>ST</sup> SEPTEMBER  
SLIP END SOCIAL CLUB**

**RAFFLE**

**PRIZES FOR 1<sup>ST</sup>  
2<sup>ND</sup> & 3<sup>RD</sup>  
PLACE**

**£5 PER PERSON  
INCLUDING  
SUPPER  
7:30pm *START*  
4 TO A TEAM**

For tickets, or further information

Contact **Katrina**

07753 168443

[hatsbydoo@btinternet.com](mailto:hatsbydoo@btinternet.com)

ALL PROCEEDS TO GO TO ORACLE CANCER TRUST



## Local Theatre

Regular readers of our Parish News may know that I am a supporter of cultural activities, especially those provided by local choirs and theatre groups. In a recent issue, I wrote about a play I had seen at the Little Theatre in High Street South, Dunstable. As a member and season ticket holder at the Dunstable Rep Theatre Club, I get to see a range of plays all of which are performed to a very high standard.



In July audiences were entertained by a four person cast in the comedy version of 39 Steps – a play adapted by Patrick Barlow from the John Buchan novel. The adaptation, a version of which is showing in the West End, has Richard Hannay played by one actor then the rest of the numerous characters played by one lady and two men. They changed characters by

changing hats, clothing, wigs and accents, amazing and very funny!

The next season starts with Agatha Christie's "Then there were none" from 28<sup>th</sup> September – 6<sup>th</sup> October, followed by Shakespeare's "Hamlet", showing from 23<sup>rd</sup> November – 1<sup>st</sup> December. As always there is a wide range of plays and I'm sure most people would find at least one that they would enjoy. The remaining plays for the season are "Key for Two", "The Female of the Species", "Children's Hour" and "Calendar Girls".


For more information about the theatre, look out for posters or What's On guides or see [www.littletheatre.org.uk](http://www.littletheatre.org.uk)



Alison Wilson

Photos from 39 Steps

**SJM PLUMBING**  
ALL PLUMBING WORK UNDERTAKEN  
Steve Machin  
BATHROOM INSTALATION  
GUTTERING  
DRAINAGE  
RADIATORS



FREE ESTIMATES  
07830 702845

No job too small  
No callout fee

**Charisma Hair & Beauty Salon**

**Ladies & Gentlemen**

**722801**



**Opening Times**  
Mon: 9.15-2.45  
Tues: 9-5  
Wed: Closed  
Thurs: 9-6  
Fri: 9-7  
Sat: 8-3

Air-conditioned - Easy Parking - Chiropody  
Remedial Massage - Indian Head Massage  
43B Elm Avenue, Caddington

♥ **Little Jasmine** ♥  
Handmade crafts and personalised gifts  
Nappy cakes  
Baby cupcakes  
Lavender hearts  
Bunting for all occasions  
including personalised children's names  
[www.littlejasmineonline.co.uk](http://www.littlejasmineonline.co.uk)

**NEIL SHEPHERD**  
Painter & Decorator  
General Maintenance  
Fully Insured & Approved  
**07860 93 93 93**

## 1st Woodside Brownies

### World's Biggest Coffee Morning for Macmillan Cancer Support

As we are unable to arrange a morning event, we will be having a Coffee Evening which will take place on Wednesday 26th September from 6:00—7:30pm in the Village Hall.



There will be coffee (or tea if you prefer), cakes for sale and a raffle. If anyone would like to donate cakes for this worthy event, please contact Gillian (Wise Owl) on 01582 723109.

**Please give your support!**

\*\*\*\*\*

We have a few spaces at Brownies, which is held on a Wednesday evening (term time only) in the village hall from 6:00—7:30pm. It is run by Paula Fowler (Brown Owl), and Debbie Farmer (Tawny Owl) with help from two young girls, Courtney and Ellie, as well as myself (Wise Owl).

For more information, please contact me on the number shown above.

*Gillian Plummer*

### Slip End Allotments and Gardens Association

Allotment rent and membership is due on Friday 28th September. This can be paid between 7 and 8pm at 9 Markyate Road.

If you are interested in having an allotment, then please contact Derrick on 01582 736892.



01582  
452722

frogandrhubarb.co.uk

## CHEAP DRINKS PARTY NIGHT

### FREE ENTRY

### All Drinks

### £2.50\*

### Shots Only £2

### Disco

### Sat 29th Sept

## CHARITY RACE NIGHT

### 8pm Sat

### 13th October

### £1 A Bet

### Cash Prizes

### Plus £60 Prize Tricast In Aid Of Cystic Fibrosis

# Aley Green Methodist Church

## Services and Diary dates for September

### **Sunday 2nd**

11.00am Morning Service - Rev Bob Forrest  
Communion

11.00am Sunday School reopens -Bring and Sing

### **Saturday 8th**

We will be taking part in the Beds & Herts Historic Churches Trust 'Bike & Hike'

### **Sunday 9th**

#### **Harvest Festival**

11.00am All Age Worship led by Rev Phil Horner

4.00pm Ecumenical Service for Harvest led by Rev Phil Horner followed by Afternoon Tea

(Pew envelopes will be available for donations to the Methodist Relief & Development Fund)

### **Monday 10th**

7.30pm Harvest Auction Supporting Water Aid

### **Tuesday 11th**

10.00am/12.00pm 'Cakes & Company'

7.30pm Bible Study - Rev Bob Forrest

### **Saturday 15th**

2pm - 5pm Caddington Village Show

Preserve stall in aid of Action for Children and guessing game for Macmillan

### **Sunday 16th**

11.00am Morning Service led by Rev Julie Bradshaw, Superintendent Minister

11.00am Sunday School

### **Wednesday 19th**

7.30pm Coffee Evening

In aid of Methodist Relief & Development Fund

### **Sunday 23rd**

11.00am Morning Service - Pam Lewis

11.00am Sunday School

### **Monday 24th**

7.30pm Fellowship Meeting - Mike Bull

### **Friday 28th**

From 9.00am

The Worlds Biggest Coffee Morning for Macmillan at 45 Manor Road

### **Sunday 30th**

11.00am Morning Service - Geoff Bocutt

11.00am Sunday School

\*\*\*\*\*

We were very pleased that our 9.30am summer Sunday services, Bible Studies and Fellowship meetings were well attended. The July Coffee Evening, raffle, cake sales and pew envelopes raised £216.60 for Action for Children.

Our lively Sunday School will re-open on Sunday 2nd September at 11am with 'Bring & Sing'. This is a time when we can catch up with the children's holiday news and share fellowship together.

As reported in June, we have more than doubled our fund raising target of £500 for the Luton & Dunstable Neonatal Intensive Care Appeal (£1123.90). We are now delighted to tell you that we have met our target for the Hospice at Home Care (Dunstable) by raising £514.10.. It was good to reach both targets for 2012 by July. Thank you to all who helped and supported us.

Our charity work will continue throughout the month of September and we hope you can join us for our Harvest Festival, Harvest Auction, Coffee Evening and for the Worlds Biggest Coffee Morning for Macmillan. Bacon Butties from 9am, plus tea/coffee, cakes pastries, preserves, bric-a-brac, games and tombola. If you can't come but would like to help, we would gratefully receive tombola prizes eg. sweets, crisps, smellies drinks and unwanted gifts. (to 45 Manor Road.)

In the afternoon we will be selling cakes and running a children's tombola outside Caddington School and in the evening at 6.30pm our children of the 2 by 2 club will raise funds with games and stalls and of course a cup of tea or coffee.

Do pop along to see us, you will be given a warm welcome.

God Bless from all at Aley Green

*Ann Meader*



## RAGS (Aley Green's Walking Group)

The walk started at the end of a week of hot summer sunshine and scorching temperatures. Luckily for the 14 walkers, it was not as hot as it had been, in fact it was a very comfortable hike. We set out from Anglers Retreat in Startops End, Marsworth and Yvonne led us along the canal and then across the fields. We stopped off so that the youngsters in the party could make use of the free rope swing that we found hanging from a tree.

After a short walk along a canal that had no water, apparently it had a leak, we found ourselves looking at the birds on one of the Tring reservoirs through a hide that we passed. After that it did not take very long to reach the end of the 4 miles in the countryside and sit down with a well earned drink and an excellent meal. With 17 of us eating, the young lady serving us did so with a welcoming and helpful smile. Thank you to all. *Mervyn Wilson*



### Everyday Roasts £5.95

*Mondays - Fridays, noon to 2.30pm  
Tuesdays - Fridays, 5 to 8pm*

### Traditional Sunday Roasts

*Choice of Beef, Lamb, Chicken  
Nut Roast & Vegetable Lasagne (V)  
Adult £6.95 Children £3.75*

## THE PLOUGH

WOODSIDE ROAD, NEAR SLIP END

☎ 01582 720923

*Family Pub, Dining Room  
Large Garden & Play Area  
Car Parking, Disabled Facilities  
& Baby Changing*

**Lunches 12 to 2.30pm  
Evening Meals 5 to 8pm**

Bookings advised

Our Restaurant is generally closed on Sunday & Monday evenings, unless bookings are made in advance

We take bookings for large parties in the Restaurant.

### Parties & Special Occasions

*Why not take over the Pub  
& Restaurant on a Saturday evening  
for your party to get together?  
Details from Doug or Melissa.*

### Join our Discount Club!

*Get 15% off our Restaurant Menu*

## The Neighbourhood Plan – What’s Happening?

First of all, a big thank you on behalf of the Parish Councils of Caddington and Slip End to everyone who attended the public meetings and workshops run by the Prince’s Foundation in late June.



The Prince’s Foundation team has now pulled all the information from those events into a report. This report is now with the Neighbourhood Plan Steering Group – a group of unpaid volunteers from both parishes who are operating with delegated authority from the Parish Councils.



Now the Steering Group sub groups (health, leisure, shopping, transport, archaeological and historical issues, employment, housing etc) are combining the results of their work with the Prince’s Foundation report.

In the Autumn, there will be further consultation and events and exhibitions to communicate what has been achieved so far. These events will be publicised in our local village magazines, on the parish notice boards and possibly by leaflets delivered to your door - so please look out for them.

We are also developing a website dedicated to the Neighbourhood Plan.

**We want to give as many people as possible the chance to understand the issues and voice their views. It is vital to the success of the Neighbourhood Plan that the whole community is closely involved. The Plan is your chance to have a strong influence on how your communities develop over the next fifteen to twenty years.**

If we are successful in getting the plan adopted, it will also be a powerful way to protect our villages from inappropriate building developments such as Bushwood which could threaten our quality of life and the rural character of our villages.

If you wish to join the Steering Group, have experience of this type of work or expertise in website development, please contact Kevin Collins the Chair of the Steering Group on 01582 456407 or at [plan@case4mail.org.uk](mailto:plan@case4mail.org.uk)

*The photos on this page show some of the people who attended the meeting in the village hall in Slip End*



## Interesting Places

I was talking to a friend recently who pointed out they rarely visit tourist attractions nearby, except when they have visitors. There is something to be said for “playing tourist” occasionally. Look at what is available in a 20 to 30 mile radius, choose an affordable place, take a picnic and make a day of it.

London is one of those places. As a child, on the outskirts of London, I used to go shopping



“in town” for special occasions but totally ignore it as a destination with places of interest. Recently we decided to treat ourselves to a visit to the Tower of London and other places along the river. It may have been a long and tiring day out, but we enjoyed the sights. The crown jewels were as impressive as I remembered them to be and the exhibitions in the Towers were interesting. From the walls we had a good view of Tower Bridge and the Olympic rings.

One of the places that local people sometimes forget, unless they have children to entertain, is the Zoo. I like to go to both Whipsnade and London Zoos. London Zoo has a wonderful new penguin pool which is worth a visit. Whipsnade is somewhere I enjoy visiting in all



weathers and times of day, as you get to see and photograph a variety of animals and enjoy the views of the surrounding countryside.

*Alison Wilson*

# **THE RISING SUN**

**REAL ALE!  
REAL FOOD!  
REAL PEOPLE!**

**AT THE COMMUNITY HUB,  
SLIP END CROSSROADS**

**☎ 01582 482354**



## **HOME COOKED FOOD**

Specials board including Steak & Seafood

**Weekdays: Lunches 12 noon - 2.30pm  
Dinners 6 - 9pm**

**Saturdays: 12 noon - 6:30pm**

**Sundays: Lunches 12.30 - 6:30pm**

**Roast Special 2 courses £9.50 per person  
with a choice of roasts**

## Farley Hill Methodists

Excitement is hotting up at Farley Hill as the big day (the 50th Anniversary Service of Thanksgiving on Saturday 22nd September) comes ever nearer.

VIP's attending on this momentous occasion are Jack Sapsworth, the High Sheriff of Bedfordshire, Councillor Syd Knight, Mayor of Luton, Lord McKenzie, Gavin Shuker and Kelvin Hopkins who will all be accompanied by their ladies. The first ever Minister at Farley Hill in 1962, Rev Geoffrey Fletcher, will be attending and leading the service. Also attending are other former Ministers going back to 1964. Reverend Lord Leslie Griffiths MA. BA. of Burryport will preach.

The service commences at 2pm please be seated by 1.30. There is a buffet after the service. All enquiries to Ken Cameron (see contact details below)

The service will bring to an end ten months of celebrations which included an invitation quiz, won by the politicians team, three grand concerts, a garden party and a joint Queen's Diamond Jubilee and Golden Jubilee Lunch.

It will be a case of lying down in a dark corner until Christmas and that will not be TOO far away.

The Golden Anniversary Concert on June 30<sup>th</sup> was a memorable evening. Cantata directed by Chris Young provided the entertainment with a whole host of much loved numbers. Star of the evening was fourteen year old Rebecca Ruffles, violin soloist, who richly deserved the warm appreciation of her talents. Following this, on Saturday 14th July FHM held their annual charity concert, in aid of Keech Hospice. The Beds Police Choir, directed by Mark Edmonds, provided the entertainment. It was really another night of marvellous music with many popular songs. Phil Bray, Gil King and Mark Edmonds provided the solo contributions as well as the accompanist, Richard Heyes, and

Helen Collins with a delightful session on the piano.



The Lunch club's mystery tour, the sixth annual one, was a resounding success and the weather on 8th August perfect. With the cooks on holiday Ken turned his hand to producing a buffet which everyone enjoyed (or so they wisely said) before departing in an executive coach to the secret destination, WOBURN ABBEY and there everyone enjoyed the gardens flowers and, of course, the tea room.

Wednesday September 12th is yet another anniversary the Lunch Club's 7th. A full roast lunch will be served and there will be singing of popular tunes and some fun and games to celebrate the occasion, the 84th consecutive lunch. £3.50.

*Ken Cameron*

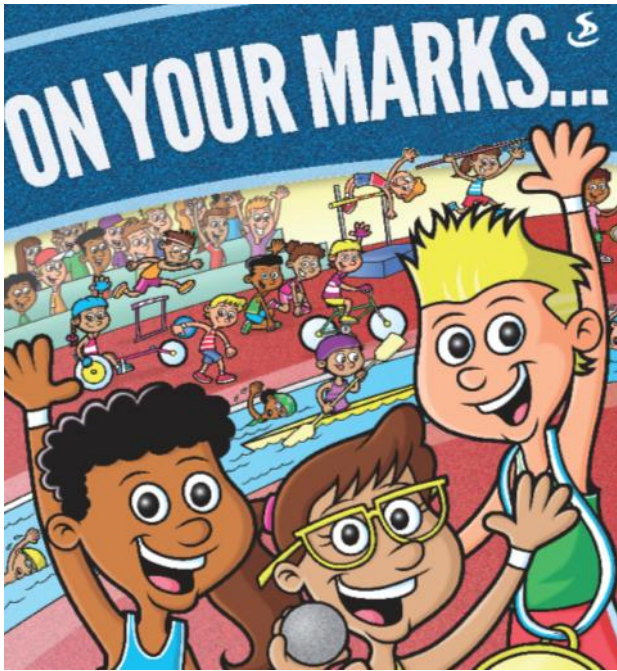
07852424628 or [kenneth@xlnmail.com](mailto:kenneth@xlnmail.com)

## Friendship Club

On Monday 9<sup>th</sup> July members and friends (forty-four of us all together) went to Bognor Regis for the day and yet again the weather was kind to us. There was rain on the way but it was great once we arrived so a good time was had by all.

Our next outing will be to Southend on 10<sup>th</sup> September. Hope to see you all on that day.

*Pam King*



of Team Jesus! So come and discover the special events this holiday has in store for you. There will also be all the usual games, crafts, puppets, fun and enjoyment that have been part of our previous holiday clubs.

*Book early to avoid disappointment.*

Holiday club is most suited to children in school years 1-6 but others including reception year are welcome -if the numbers allow.

We would also wish to advise you that this year we would appreciate a minimum donation of £10 per child but this is for BOTH days

For more details contact either

Mary (738435), Jill (452539) or Lynne (723029). However, further details and consent forms will be distributed on receipt of the

registration form

The team looks forward to welcoming your children!!

**St Andrews Autumn Half term Holiday club  
Thursday 1st & Friday 2nd November 2011**

This year's club, "On Your Marks", has an Olympic title and we find out about being part

<b>On Your Marks registration form 1/11-2/11</b>	
<i>Child's full name:</i>	<i>Sex: M/F</i>
<i>Date of birth</i>	<i>School:</i>
Please register my child for the holiday club <i>Parent's/Guardian's signature:</i>	
<i>Parent's/Guardian's full name</i>	
<i>Address:</i>	<i>Phone number:</i>
<i>I give my permission for our details to be entered on the Church data base</i>	<i>Yes/No</i>
<i>I give my permission for my child to appear on group photographs</i>	<i>Yes/No</i>



# SLIP END SOCIAL CLUB

New Street, Slip End  
☎ 415804

*New members  
& their families welcome!*

*Be social  
make it your local!*

**Big Screen Live Sky Sports - Pool - Darts - Crib - Dominoes  
Bingo Wednesdays - Saturday Night Entertainment fortnightly - Golf Society**

*Opening times: Weekdays: 4.00 to 11pm  
Saturdays: 12 noon to 12 midnight    Sundays: 12 noon to 11pm  
Usual Club prices!*

## Smart Houndz

The smartest houndz in town  
Professional Dog Grooming

All sizes & breeds welcome  
Hand stripping, nail clipping scissoring & clipping

Contact  
Paul Wager (Caddington) 07875 409933

City and Guilds Level 2 & 3 Qualified  
[www.smarthoundz.com](http://www.smarthoundz.com) [paulmwager@hotmail.com](mailto:paulmwager@hotmail.com)



**Sales, Repairs, Installations  
Your Local Repair Service  
Please call 01582 763088  
Established 18 years**



**Reduce waste that goes into landfill by  
offering it to your local community for free!**

Post your unwanted items on  
<http://uk.groups.yahoo.com/group/FreecycleLuton/>  
and an email is sent to all members  
who then make contact to arrange collection.

**Everything must be free, preferably local,  
although some things can be posted.**

**Do you want to advertise  
in this space?**

**CALL KATRINA  
07753 168443**

## Caddington WI



We are pleased to say our darts team is doing very well having won two out of three matches. Well done. At our June meeting we had a talk on the walled gardens at Luton Hoo with Felicity Brimble. It was a very interesting evening.

In July we had an Illustrator, Ian Jackson showing us his pictures and books which had his designs and colours printed inside. He was a very professional man and we asked many questions about his work. We later had a quiz which everyone found so difficult! Where does Sue get these questions from? This had us all giggling at some of the questions and answers. Sallie read a report on the AGM held at the Royal Albert Hall in London.

Unfortunately, one of our long term members, Pat Crick, has passed away. Pat had been with our W.I. and on our Committee for many years and was a lady who was always pleased to help out. She could always be relied on for whatever job we asked her to do. Her story writing was so very interesting and she joined in any singing and acting asked of her, always playing the parts well, including the dressing up! Pat will be missed by us all as she was such a kind lady. Our thoughts are with her husband, Peter. Sallie held a coffee morning on the 30th July to raise funds for our WI

We had Carole Stroud talking about the Cinnamon Trust in August. Our Birthday party is in September and we have a Group and Federation Meeting to look forward to later in the year. At Christmas (dare I mention this) we will be going to London to have a meal and see the Christmas lights.

Don't forget we meet on the third Tuesday of each month at the Baptist Church Hall at 7.30pm We hope you can join us for an interesting evening and a cuppa!

Future Dates: 18th September, 16th October

*Linda Edwards*



*Conservation Garden*

Gardening in a different style. The above is a picture of the Conservation area at the back of St Andrew's Church which has been set up by Sally Gray - anyone is welcome to take a stroll to see it. There are currently some harebells which, I am told, are quite rare.

More gardens for you to enjoy:-



From the Open Gardens in June





ST ANDREW'S CHURCH

# HARVEST SUPPER

SLIP END VILLAGE HALL  
FRIDAY SEPTEMBER 21st  
7 for 7.30pm



Everyone  
welcome



Tickets from Church,  
Slip End General Store  
or contact Sue Lyons on 414162  
or Jan Buttery on 724527  
£5 ADULT £3 CHILDREN  
£10 FAMILY TICKET (2+2)  
(£2 for each additional child)







# FURNITURE MEDIC®

"the prescription for damaged furniture."®

## Repairs & Restoration to Wood, Leather & Fabric

111 Wellington Street, Luton

☎ 01582 410015

Fax 01582 737315

E-Mail [luton@furnituremedic.org.uk](mailto:luton@furnituremedic.org.uk)



*Keep track of  
latest local issues,  
events, etc., visit .....*

[www.slipend.co.uk](http://www.slipend.co.uk)

*Our website contains  
lots of information  
covering all activities  
and groups in the Parish.  
Web mistress Sarah Minnighan  
& Webmaster Peter King have  
been working hard  
to update information  
and improve presentation.*

## PH SERVICES

CAR & MOTORCYCLE REPAIRS  
PHILIP HALL  
MECHANIC

- ✓ Servicing
- ✓ Tyres
- ✓ Computer Diagnostics
- ✓ Bodywork
- ✓ MOT



UNIT 3  
MANOR ROAD GARAGE  
CADDINGTON

Office: 01582 722251

Mobile: 07769 734417

*Damaged bikes wanted for Cash  
Nationwide collection*

e-Mail: [phillhall1200@btinternet.com](mailto:phillhall1200@btinternet.com)

10% Discount with this voucher!



## Painting & Decorating PETE the PAINTER

for all your decorating needs

- Laminated Flooring
- Carpentry Work undertaken
- Tiling - Floors & Walls
- Over 20 years experience

4 Elm Avenue Caddington

**Call for a free Quotation**

**Tel: 01582 453611**

**Mobile: 07971 348485**



## PILATES

*'Intelligent Exercise'*  
A method of exercise  
and physical movement  
designed to stretch body.

**Group sessions at  
Slip End School**

**For information  
call Andrea on  
01582 458886**



## StotenGillam

chartered accountants  
chartered tax advisers

**PRACTICAL SOLUTIONS FOR  
GROWING BUSINESSES**

**01582 608601**

**Alban House  
99 High Street South  
Dunstable LU6 3SF**

[www.stotengillam.co.uk](http://www.stotengillam.co.uk)  
[enquiries@stotengillam.co.uk](mailto:enquiries@stotengillam.co.uk)

ACCOUNTS TAXATION  
AUDITS FINANCIAL  
ADVICE PAYROLL  
COMPUTER SERVICES

MEMBER FIRM



## Scissors

**Mobile Hairdresser**

Experienced, London  
trained hairdresser,  
now available locally.

**Call Dorothy  
tel: (01582) 726410**

## Public Rights of Way

### What is a public right of way?

According to the [www.direct.gov.uk](http://www.direct.gov.uk) website there are certain routes across Britain that you have the right to walk along. These routes may be roads, paths or tracks, and can run through towns, remote countryside or private property. They are open to everyone at any time and are known as public rights of way or simply rights of way.



As well as walking, some rights of way are open to horse-riders, cyclists or motorists.

The local highway authorities in England and Wales keep legal records of rights of way, showing where they are and their status.

### Types of public rights of way

There are four different types of public rights of way. These may be marked along their route with signposts and coloured arrows:

Yellow Arrow - **Footpath** – open to walkers only

Blue Arrow - **Bridleway** – open to walkers, horse-riders and cyclists; cyclists must give way to walkers or horse-riders

Plum Colour arrow - **Restricted byway** – open to walkers, cyclists, horse-riders and horse-drawn vehicles

Red Arrow - **Byway open to all traffic** – open to walkers, cyclists, horse-riders, horse-drawn vehicles and motor vehicles

English and Welsh local councils must record the existence and locations of rights of way and make sure this information is available for public use.

You can find rights of way in your area by looking at Ordnance Survey (OS) maps. The most useful OS maps are 1:25,000 scale – these show all public rights of way and permissive paths in green. The 1:50,000 OS maps show public rights of way in red.

The OS website has downloadable guides to map symbols and can be found at:- <http://www.ordnancesurvey.co.uk/oswebsite/>

You can also find rights of way through the Central Bedfordshire website at <http://www.centralbedfordshire.gov.uk/environment/countryside/public-rights-of-way/default.aspx>

If you would like to report a problem with a right of way under Central Bedfordshire Council's jurisdiction you can contact the relevant department through the link above and by using their online 'contact us' form, or by e-mailing:-

[rightsofway@centralbedfordshire.gov.uk](mailto:rightsofway@centralbedfordshire.gov.uk)

Links to both of these websites can also be found on the parish website [www.slipend.co.uk](http://www.slipend.co.uk) under the 'Village Information' then 'Public Rights Of Way' buttons.

*Cllr Sarah Minnighan    Slip End Parish Council*



# BRIDAL & BEAUTY SPECIALISTS

ALTERATIONS ON ALL GARMENTS

SPECIALISTS IN BRIDAL GOWNS, BRIDESMAIDS,  
1<sup>st</sup> COMMUNION & PROM WEAR



WAXING, TANNING, NAILS (GEL & ACRYLIC),  
MASSAGE & TEETH WHITENING

# Mignonette 01582

'The Chapel' 38a Church Rd. Slip End, Luton LU14BJ  
info@mignonette.com www.mignonette.com

# 402345



## High Elms Tree Surgery Ltd

SHAUN MORRIS

Specialist in: ~

- FELLING
- LOPPING
- SHAPING
- STUMP REMOVAL
- HEDGES TRIMMED,  
SHAPED & REMOVED
- DEAD WOODING
- REDUCTIONS
- CROWN LIFTING
- WOOD CHIPPINGS
- LOGS DELIVERED
- TREE REPORTS
- TREE SURVEY INSPECTIONS
- T.P.O. & PLANNING  
APPLICATIONS

• 24 HOUR EMERGENCY SERVICE

- No Job too small • Free Estimates & Advice
- Fully Insured to £5 Million
- Approved by Local Authorities

Tel: 01582 840144 Mobile: 07939 623675  
www.highelmstreesurgery.co.uk

Old Beechwood, Cheverells Green, Markyate, AL3 8AB

**Can't find time to do all  
those Jobs around  
your Home?**

## **RELAX**

**We have a Man that Can!**

Collections, deliveries, removals,  
furniture repairs, restoration, flat packs  
& all manner of jobs undertaken.

**For further information call  
Paul Goodaker on 0797 9057393**





# Pub Pages



**Remember all our local pubs serve good food and provide excellent company and community events. Parties and celebrations can be arranged—just contact them for more details.**

Monday, it's "Eyes Down" at 3pm. (very informal)

For more information please call 01582 720923 and ask for Doug or Melissa.

## Frog and Rhubarb

Congratulations to the team at the Frog & Rhubarb. They have been the highest ranked pub restaurant on Tripadvisor in the Luton & Dunstable area for several years. This achievement has now been recognised with them receiving a certificate of excellence. This

accolade is awarded to a select few premises that achieve consistently high ratings from their customers. It is great to see a quality

local business being recognised in such a high profile manner.

The Frog has recently invested in a state of the art coffee machine. It produces the very best quality drinks by grinding coffee beans freshly for every cup. It also uses fresh milk to create fantastic cappuccino and even layered latte. coffees and teas are available all day at the pub so why not pop in and relax on the sofas with some friends.



As Olympic fever gripped the nation, the Frog & Rhubarb showed its support for Team GB by screening the games from opening to closing ceremonies. The pub will also be showing the Paralympic Games, helping to celebrate the excellence of Paralympic sport. The Frog is the ideal place to watch this or any other sporting event in a relaxed environment without the rowdiness often associated with sport in pubs.

## Plough

Well what an exciting last few months here at The Plough...

A big well done to one of our Domino members, Margret Duncan who won the Bob Mackey Trophy.

For the Queen's Diamond Jubilee Celebrations we held a BBQ, and despite the bad weather we all had a great time.

Doug & Caroline celebrated their 18<sup>th</sup> Year in The Plough. They had DJ Jim Carway from Diverse Fm who played great music, Doug also put on a wonderful buffet. Everyone who came and helped celebrate this occasion had a great time; there were lots of dancing, laughter and lots of smiley faces. It was nice to see everyone who came.

Congratulations to Mr & Mrs Walters, who had their wedding here at The Plough, the Bride, Groom and their guests enjoyed a 3 course meal and had some lovely photos in our garden. The couple who live in Yorkshire had a brilliant day and all of their guests enjoyed themselves.

Congratulations to Mr & Mrs Baird on their 25<sup>th</sup> Wedding Anniversary, friends and family came and enjoyed a 2 course meal in our restaurant. Wish you both many happy more years together.

Also a Happy 1<sup>st</sup> Wedding Anniversary to Lisa & Matt who had their wedding here last year in the marquee, they came and celebrated the day by having the same meal they had on their wedding day. Congratulations!

If anyone wants to come and join in a game of Bingo, you're more than welcome. Every

Elvis Rivers returned to the village in July. It was a fantastic night of music and entertainment from the most charismatic Elvis tribute act. Once started, Elvis Rivers enjoys himself so much it is hard to get him to stop performing. This guaranteed the fun and entertainment carried on into the early hours.

The staff at the Frog certainly have green fingers. Three of them opened their gardens to the public to support the Gardening Club. They also laid on Pimms, bacon baps and cream teas. The pub donated all the Pimms and lemonade for the day which was a huge seller on one of the few sunny days this year raising over £100.

### Forthcoming Events @ The Frog

With the darts season kicking off in September, the Frog's team is hoping to continue the success of recent years. Last season they finished high up in the league above all the other teams in the Parish. If you would like to join the team or start a 'B team', pop into the pub on a Thursday evening and speak to team captain Rik.

Cheap Drinks Party Night returns to the Frog on Saturday 29 September. Make the most of this amazing value night. Entry is free with cheap drinks from 9pm until midnight. (see our advert for more details) There will be a disco to ensure this is yet another fantastic night at the Frog.

Charity Race Night will take place on the 13th October this year. The Frog & Rhubarb is hoping to beat last years amazing total of over £400 that was donated to the school. This year all the money raised will be donated to support those living with Cystic Fibrosis. Bets will be £1 each and you can back as many or as few horses as you like. The prizes are all cash and include a £60 tricast fund. There will be eight races throughout the evening and the betting is really simple. If you are a novice, staff will be on hand to help you out with any questions so don't be afraid to pop along and join the fun from 8pm.

Up to date information on events and offers can be found on the pub's website [www.frogandrhubarb.co.uk](http://www.frogandrhubarb.co.uk)

### Rising Sun

The Rising Sun is holding a Beer Festival over the weekend of 29th & 30th September to celebrate the 175th Anniversary of the pub. For more details please ask at the pub.

They will be hosting a "Michael Buble/Robbie Williams" tribute act in aid of FoSELS for Slip End Lower School. This will be a ticket only event! Details to be confirmed after the start of the new school term. Community events at the Pub include darts, dominoes, the Chatty club and fund raising evenings



On 7th July Lily's son Jonathan and new daughter in law Charlotte were at the Rising Sun to celebrate their wedding. They were married in Uxbridge in the morning and they had their reception and a blessing at the Rising Sun with Reverend Cathy Pullinger officiating. Many family and friends were present and had a very enjoyable afternoon and evening. Congratulations to Jonathan and Charlotte and their family.

### Social Club

Slip End Social Club is hosting a fund raising Quiz Night on Friday 21st at 7:30pm See the poster on page 31 for more details. They also host other fund raising events as well as the Community Projects Group's monthly meetings. Contact them for more information.



# SJ Locks

Local Independent Locksmith



- Free Lock/Security Review
- Lock Fitting/Changes
- Available For Emergency Callout 247
- Entry Using Non Destructive Methods
- Key Holding Service
- Competitive Pricing
- Police Vetted



Call Steve – 01582 842517 / 07580 716415

[www.SJLocks.co.uk](http://www.SJLocks.co.uk)

## CADDINGTON TWINNING ASSOCIATION

### Youth Exchange Trip

2 adults and 7 young people went from Caddington to Oststeinbek for the return Youth Exchange Trip on the 22<sup>nd</sup> July for a 4 night visit. We stayed in 7 different homes around the village.

There was a great programme of events organised for us....Hamburg City sightseeing, tree climbing, Miniature Wonderland Model Display, canoeing on the river, a few barbecues, and a little bit of free time to spend with our own host family.

We all tried different foods, and learned a few German words, and took part in many great experiences.

The weather was fabulous...the hottest week of the year....so far!

It is hoped that the youngsters will keep in touch with their German friends.

Here's to the future. *Tschuss, Kay x*

[Kaymcilroy@sky.com](mailto:Kaymcilroy@sky.com) 01582 724991

### Hats and Headwear



Kay would also like to announce that Charisma, is now offering a hire service of **Special Occasion Headwear**.

She has a portfolio of items for you to browse before discussing dates and requirements. If you have an item that you think could be added to the collection please ask.

For more information please call in at the salon or phone them on 01582 722801.



## Community Projects Group

### *Neighbourhood Plan—the CPG view*

*This plan will be vital to the long term future of our area.* Take another look at Keith Holme's item in June's PN (see [slipend.co.uk](http://slipend.co.uk)) to get a full understanding of what is afoot.

A draft report has been submitted by the Prince's Foundation team who visited our area in June. A great deal of information was passed from local people with a view of how they feel developments (housing, jobs, transport, etc.) should go. Our local 'Steering Group' representing both Slip End and Caddington Parishes, will present the final report before a referendum takes place in the community. Following approval by us as residents, strategies within the Neighbourhood Plan will have legal clout when it comes to development planning, giving our local communities a huge say in how things evolve on their patch.

At present, plans may be submitted by all and sundry and the residents' views tend to disappear under blasts from 'developers' and 'authorities'. To our minds, the 'Bushwood' schemes are typical. Take a look at this image, a brand new Luton 'development' only a mile from Slip End ...

If a 'Neighbourhood Plan' had existed there, would such a gruesome new 'development' like this have passed planning? This has been subjected by Luton Planners *on their own residents!* The established homes shown in the picture are typical of Crawley Close, Claydown Way, Prebendal Drive and other pleasant parts of our Parish: *without the power of a Neighbourhood Plan, we could suffer like our near neighbours just across the motorway.*

The CPG feels that our biggest enemy at present is local apathy. The Village Hall was comfortably attended in June to hear the Prince's Foundation people. *There is little doubt that it was apathy which kept hundreds of residents away. Our view is that the Village Hall should have been bursting at the seams that evening.*

We are entering a monumentally important time in the history of our parishes. Residents are asked to keep themselves aware of the possibilities and pitfalls. Attending regular meetings of the CPG and Parish Council may help people keep in touch and perhaps offer help and consideration on how we move forward as a community.



## Featuring young people

*We featured an article by young resident, Scarlett Dixon, earlier in the year in Slip End Parish News, we thought we would feature her latest venture which she has written about here.*

I have just left Sandringham's Sixth Form (studying A Levels in English Literature, Philosophy & Ethics and Media Studies). I hope to one day work as a roving reporter or a showbiz journalist, interviewing the A-List on the red carpet. I'm eighteen and live in Slip End and am on a gap year next year before studying Multimedia Journalism at Bournemouth University.

I set up a fashion, gossip and showbiz blog ([www.scarlettlondon.blog.com](http://www.scarlettlondon.blog.com)) in May 2011 as a means of expressing my own views about the world around me, and to maintain an online showcase of my writing for prospective employers. As I am an aspiring journalist, I thought it would be a great way to gain experience and practise my writing skills. Although I initially started the blog for my own interests (thinking no-one would actually read it) the number of visitors to my blog gradually increased and before I knew it, I was receiving over 1,000 views per day. The blog now attracts over 39,000 views per month on average and I have around 2,500 regular readers and subscribers.

street store Next, and previous winners have gone on to receive book deals and work with major brands. There were over 12,000 blogs considered for the award this year, so I feel really privileged to have been shortlisted. The voting opened on 18<sup>th</sup> July and people can vote for free here:-

<http://www.next.co.uk/cosmo-blog-awards/>  
Voting closes on September 30th 2012 and the awards ceremony is in mid October in central London.

Scarlett Dixon [www.scarlettlondon.blog.com](http://www.scarlettlondon.blog.com)



*The photographs are from when I was asked to blog live from Essex Fashion Week.*

*They show me interviewing Jeff Brazier (he was married to Jade Goody) and The Only Way Is Essex star Amy Childs!*

\*\*\*\*\*



Ian Wilson graduated from Wimbledon College of Art (University of the Arts London) with a Foundation Degree in Theatre Lighting Design and Practice. Well done Ian!



Recently, it was announced that I have been shortlisted for the prestigious Cosmopolitan Magazine Blogger's Newcomer Award, going

up against 15 other UK blogs for the prize (award ceremony in October). Although I understand I am up against tough competition, it is fantastic to have been nominated for such an award. The Award is sponsored by high



## DIARY - *If you would like your events included, please contact the Editor*

### **September**

- Mon 3rd Parish Council Meeting Slip End Village Hall 7:30pm  
Tues 11th CPG meeting Slip End Social Club 7:30pm  
Mon 17th Gardening Club Village Hall 8pm  
Tues 18th Caddington WI Baptist Hall 7:30pm  
Fri 21st Charity Quiz Slip End Social Club 7:30pm  
Fri 21st Harvest Supper Village Hall 7:00 for 7:30pm  
Sun 23rd Harvest Service at St Andrew's Church 10:30am  
Wed 26th Macmillan Coffee Evening Village Hall 6:00—7:30pm  
Fri 28th Macmillan Coffee Morning Peter Edwards Hall 10:00 - 1:00  
Allotment rent to be paid please 9 Markyate Road 7 - 8pm  
Macmillan Coffee Evening, stalls and games Aley Green Church 7—8pm  
Sat 29th Party Night Frog and Rhubarb  
Sat 29th Rising Sun 175th anniversary: Beer Festival  
Sun 30th Rising Sun 175th anniversary: Beer Festival

### **October**

- Mon 1st Parish Council Meeting Slip End Village Hall 7:30pm  
Sat 6th Tennis Club Quiz Night Peter Edwards Hall  
Tues 9th CPG meeting Slip End Social Club 7:30pm  
13th Charity Race Night Frog & Rhubarb 8pm  
Tues 16th Caddington WI Baptist Hall 7:30pm

### **November**

- Thurs 1st St Andrew's Holiday Club  
Fri 2nd St Andrew's Holiday Club  
Mon 5th Parish Council Meeting Slip End Village Hall 7:30 pm  
Tues 13th CPG meeting Slip End Social Club 7:30pm  
Mon 19th Gardening Club Village Hall 8pm



**Don't forget to advertise your events here!**

Please contact us with details of events to add to our diary for the benefit of all in the Parish.

## YOUR PARISH & CENTRAL BEDS COUNCILLORS

Clerk to Parish Council — **Peter Segal** 526594 (9am to noon weekdays) [clerk@slipend.co.uk](mailto:clerk@slipend.co.uk)

### Parish Councillors:-

<b>Steve Baird</b>	738205	<a href="mailto:Steven.Baird@cooperindustries.com">Steven.Baird@cooperindustries.com</a>
<b>Paul Cooper</b>		<a href="mailto:paul-cooper@indigo-tiger.com">paul-cooper@indigo-tiger.com</a>
<b>Ken Crossett</b>	414168	<a href="mailto:kencrossett@slipend.co.uk">kencrossett@slipend.co.uk</a> ( <i>Chairman</i> )
<b>Stephen Fuell</b>	417792	<a href="mailto:stevefuell@f2s.com">stevefuell@f2s.com</a>
<b>Keith Holme</b>	07969 154783	<a href="mailto:holme@keithjan.fsnet.co.uk">holme@keithjan.fsnet.co.uk</a>
<b>Sarah Minnighan</b>	07868 742904	<a href="mailto:s.minnighan@btinternet.com">s.minnighan@btinternet.com</a>

<b>Central Beds:-</b>	<b>Richard Stay</b> 0300 300 4230	<a href="mailto:Richard.Stay@centralbeds.gov.uk">Richard.Stay@centralbeds.gov.uk</a>
	<b>Ruth Gammons</b> 01582 738398	<a href="mailto:ruth.gammons@centralbeds.gov.uk">ruth.gammons@centralbeds.gov.uk</a>

## WHO DO I CALL?

<b>Fly Tipping (CBC)</b>	0300 300 8000	<a href="mailto:wasteservices@centralbedfordshire.gov.uk">wasteservices@centralbedfordshire.gov.uk</a>
<b>Road issues</b> (potholes etc)		<a href="mailto:highways@centralbedfordshire.gov.uk">highways@centralbedfordshire.gov.uk</a>
<b>Police</b>	473211 or 101	<b>Aircraft noise</b> 395382 <b>Airparks</b> 749495
<b>Water leaks</b>	0845 7823333	<b>Cold Calling</b> - 0845 404 0506
		<b>Street Lighting</b> - 0300 300 8049

**Wheelie Bins:- Black Bins & glass:** Put out on Friday 14th, 28th September  
**Green and Orange Bins:** Put out on Friday 7th, 21st September



### Your Central Beds Councillors

contact details



**Cllr Ruth Gammons**

01582 428398

[Ruth.gammons@centralbeds.gov.uk](mailto:Ruth.gammons@centralbeds.gov.uk)



**Cllr Richard Stay**

01582 402602

[Richard.stay@centralbeds.gov.uk](mailto:Richard.stay@centralbeds.gov.uk)

**Central Beds Customer Services**

0300 300 8000

*A surgery is held on the first Sat of each month (except August) at the former Heathfield School, The Green, Caddington between 10:00 & 12:00 to raise any matter of local interest or concern*

### MP's Contact details

*Gavin Shuker's local office is located at:*  
3 Union Street  
Luton LU1 3AN



Email: [gavin@gavinshuker.org](mailto:gavin@gavinshuker.org)  
Website: [www.gavinshuker.org](http://www.gavinshuker.org)

*For advice surgery appointments call 01582 457 774*

### PETER EDWARDS HALL & PLAYING FIELD

*Ideal for children's & adult's parties, meetings, etc.  
Kitchen facilities with catering service available  
Available for various sports activities  
Excellent sports changing facilities  
Facilities for the Disabled  
For Bookings: % (01582) 767916  
or 07956 463128 (not after 9pm)*

### SLIP END VILLAGE HALL

*Your Village Hall  
for Dances, Receptions & Parties  
Facilities for the disabled  
For bookings contact  
Gill Plummer on 01582 723109  
9 Markyate Road, Slip End*

## COMMUNITY AND SERVICES

### Services:-

<b>At the Crossroads</b>	401069 Mon - Fri 7.00 to 21.00 Sat 7.00 - 21.00 - Sun 7.30 - 21.00
<b>Slip End Garage</b>	Markyate Road, 456888
<b>Doctor</b>	(Caddington Surgery) 725673
<b>Doctor</b>	(Markyate) 841559

### Schools:

<b>Slip End Lower</b>	720152	<b>Caddington Village School</b>	726058
<b>Streetfield Middle</b>	613421	<b>Ashton Middle</b>	663511
<b>Manshead Upper</b>	679400		

### Churches:-

<b>St Andrew's Church</b>	
<b>Rev. Cathy Pullinger</b>	725061 or 07425 148046
<b>Wardens: Tony Willson</b>	482681
<b>Susan Wiltshire</b>	727477

### Aley Green Methodist Church

<b>Minister: Rev Philip Horner</b>	
<b>Senior Steward: Ann Meader</b>	733668

### Sport:-

<b>Bowling Club</b>	412506
<b>Darts League</b>	425323
<b>Football</b>	01582 517042 or 07515687160
<b>Pepperstock Archers</b>	615216
Email LBP121@aol.com (Lee Prebble)	
<b>Tennis</b>	733253
<b>Gardening Club</b>	423622
<b>Slip End Stompers Line Dancing</b>	-

### Community:-

<b>Brownies</b>	723109
<b>Beavers</b>	07956 833488
<b>Cubs</b>	01582 429891
<b>Scouts</b>	01582 429891
<b>Allotments</b>	736892
<b>Friendship Club</b>	452978
<b>Mother's Union</b>	738435
<b>Playgroup</b>	728865
<b>S.E.A.D.A</b>	414796
<b>Toddler Group</b>	405931
<b>FoSELS (PTA)</b>	0789 603 7853
<b>Women's Institute</b>	737036
<b>Chatty Club</b>	andypany32@hotmail.co.uk Jean Anderson
<b>Slip End Veterans Football</b>	Wayne Leslie wayne@dngsales.co.uk
<b>Forza Storm Youth Football</b>	849449
	redhotstompers@googlemail.com

## PARISH NEWS

### Items for the next issue to us by 15th September (Adverts by 10th please)

Any delivery problems? Contact Alan Buttery at 1 Claydown Way  
(01582 724527), alanjan@buttery400.fsnet.co.uk.

Anything interesting to report about village activities, photos, holidays, etc?

Please contact us, letters and e-mails are encouraged.

Views expressed by our contributors are not the Editor's own.

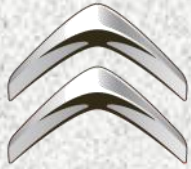
Articles should be sent by the 15th of the preceding month to

Sue Briggs, 4 The Oaks, Slip End or Alison Wilson,  
23 Claydown Way, Slip End or e-Mail parishnews@slipend.co.uk

Advertising queries to Katrina Doubleday 07753 168443  
or email hatsbydoo@btinternet.com

**Parish News is grateful to our advertisers for their contributions.**

**Please support them.**



**CITROËN**



ISO 9001 (2000 revision)  
Certificate Number 424



**SUBARU**

**ISUZU**

# Slip End Garage Ltd

- \* **New Cars**
- \* **Used Car Sales**
- \* **Repairs**
- \* **Spares & Service**

**Markyate Road**  
**Slip End**

Sales: (01582) 456888  
Parts: (01582) 411421  
Service: (01582) 481600

Our Service Centre is  
located in Grove Road  
Slip End

**e-Mail: [info@slipendgarage.co.uk](mailto:info@slipendgarage.co.uk)**  
**[www.slipendgarage.co.uk](http://www.slipendgarage.co.uk)**

*Catering for all your motoring needs since 1939*

*[www.slipend.subaru.co.uk](http://www.slipend.subaru.co.uk)  
[www.slipend.isuzu.co.uk](http://www.slipend.isuzu.co.uk)  
[www.lutoncitroen.co.uk](http://www.lutoncitroen.co.uk)*

*[sales.slipendgarages@imgroup.co.uk](mailto:sales.slipendgarages@imgroup.co.uk)  
[sales@slipendluton.citroen.co.uk](mailto:sales@slipendluton.citroen.co.uk)*