



Parish News

February 2018



Aley Green Pepperstock
Slip End Woodside

Editors' Notes

Greetings to all readers and a Happy New Year. It seems a little odd to be saying that in a magazine for February, however it is the first issue of 2018.

It also seems strange mentioning Christmas in February, This being our first opportunity to publish pictures this year, there are a few pictures from Christmas events. Included in this are a couple of pictures from the School's performance at Christmas which I gather was excellent, with some lovely songs.

It is a long time since my own children were part of school plays for Christmas in the village and I have many pictures from those days. Whatever they perform, it is always good to see how happy they are when taking part and how proud their families are when watching!

We may not have had a white Christmas here in Slip End but we did have a record amount of snow in the middle of December and the remnants and ice lasted for a good few days. We measured about 14-15 cm in the middle of our lawn. According to our records, the last significant snow in Slip End was back in March 2013 when we had about 8cm. We have records of temperature and rainfall going back many years, though have not always noted the difference between rainfall and snow. The cover photos were taken in December and make the village look

very pretty (and deserted!) The lower picture is hardly recognisable as Grove Road and was taken from the traffic lights. *Extra pictures opposite.*

Earlier in the year there was mention of a photo competition run by CPRE Bedfordshire. (Campaign for the Protection of Rural England) The winners were announced in November and some of the pictures are lovely. Should you wish to see them and find out more about the CPRE then look at the current news page on their website:-

www.cprebeds.org.uk If you scroll back to November 2017 you will find the announcement of the winners.

Remember to get your dates into the diary if you want to ensure nothing else will clash! There have been occasions in the past when several events have been planned in the area on the same day.

We have prior notice of a couple of events—not least the planning of another village day. Jill Acton has asked us to include a notice about the date—7th July. The team of organisers has done a brilliant job over the past few years, please give them your support and assistance where you can.

Recently, Parish News has had some months when there has been a lack of items to include in the current issue. If you have news or an activity that may interest other residents, please let us know.

Alison Wilson

Bringing in the last cattle in December



Photos by Angela Speirs & Alison & Mervyn Wilson



Co-op Community Fund

FoSELS (PTA to Slip End Village School) would like to extend heartfelt thanks to all those in Slip End who designated us as your Co-op Community Fund Local Cause last year - by simply shopping in the Co-op and swiping your membership card, you helped us to raise the staggering amount of £2,515.79, which will be used to fund indoor PE equipment for the school. Thank you so much!



A few of the lovely schoolchildren from the school visited Caddington Co-op in December to accept (on behalf of FoSELS) a cheque for the monies raised under the last funding tranche. The children did a fantastic job of offering biscuits to the Co-op customers by



way of a thank you for their custom, whilst at the same time raising awareness of the scheme for the Co-op.

The even better news is that FoSELS were asked to re-apply by the Co-op and have been chosen again as a Local Cause until October 2018! This is an amazing opportunity to raise even more money for the school, as the fund raising window of opportunity is twice as long as last time.

If you would like to nominate us as your local cause, please visit <https://membership.coop.co.uk/causes/17818/> to find out how we plan to spend any funds raised and see our poster for details of how to register your Co-op membership card and designate FoSELS to benefit from any funds raised.

Thank you!



FoSELS (PTA to Slip End Village School) has been chosen as a Co-op local cause from now until October 2018. Whenever Members buy Co-op branded products and services, the Co-op will give 1% back to the school.

Any funds raised via the Community Fund will be used to help improve our village school's existing outdoor educational resources - visit <https://membership.coop.co.uk/causes/17818/> to find out more about how the funds will be spent.

All you need to do to help raise money is:

- * become a Co-op member (if you aren't one already) by picking up a card instore;
- * log into your online account at www.coop.co.uk/membership
- * choose Slip End Village School as your local cause; and
- * remember to swipe your membership card every time you shop in the Co-op.

It really is as simple as that! Please also ask friends and family to designate us as their chosen local cause too - this really is a brilliant opportunity to potentially raise a LOT of money for minimal effort.



Thanks so much for your support - and happy shopping! ☺

Message from St Andrew's

I am writing this at the beginning of January about to celebrate Epiphany, but by the time the Parish News magazine reaches the homes in this parish, we at St Andrew's will be well into our preparations for Lent (Ash Wednesday is 14th February). We will also have celebrated both a baptism and a number of confirmations.

As the Church of England website says, Baptism marks the beginning of a journey with God which continues for the rest of our lives, the first step in response to God's love. It is a joyful moment when we rejoice in what God has done for us in Christ, making serious promises and declaring our faith. The church family welcomes the new Christian, promising support and prayer for the future.

The following forms part of the welcome of the Baptism service:

We welcome you into the fellowship of faith;

we are children of the same heavenly Father;

we welcome you.

The service paints vivid pictures of what happens on the Christian journey. The sign of the cross reminds us of Christ's death for us. In the water of baptism we die to sin and are raised to new life. We are born again by water and the Spirit.

This reminds us of Jesus' baptism. As a sign of that new life, there is a lighted candle, a picture of the light of Christ conquering the darkness of evil. Everyone who is baptised walks in that light for the rest of their lives.

Jesus said, 'I came that they may have life, and have it abundantly.' (John 10.10)

Confirmation enables a baptised person to confirm the promises made on their behalf at baptism. It is also a sign of full membership of the Christian community.

St Andrew's is open to everyone whether confirmed, baptised or not. As William Temple said, 'The Church is the only society that exists for the benefit of those who are not its members'. The archaic way of expressing this is to say that the Vicar has the cure of all the souls of the Parish. Put more simply, we are here for you.

Julie Taylor, Reader-in-training



Baptism of Zara Duncan (21st Jan), here with parents & God-parents

Dates for St Andrew's Church - February

Sunday 4th: 10.30am: Informal Communion – Ministering Grace and Love

Sunday 11th: 10.30 am: Family Service – Moulding Culture

Wednesday 14th: 7.30pm: Ash Wednesday – Mercy and freedom from condemnation

Sunday 18th: 10.30pm: Holy Communion and Baptism – Mercy and the nature of God

Tuesday 20th: 11am: Woodside Care Home Service

Sunday 25th: 10.30am: Morning Praise – Living in mercy

Little Stars for February

Every Wednesday parents, babies and preschool children gather in the family room at St. Andrew's for chat, a story, crafts and songs – all based round a simple Bible story or theme. All are welcome and we are very relaxed about timing if the morning doesn't pan out quite as expected. If you are new to the village or new to motherhood do come along, you will receive a warm welcome.

Refreshments from 10.00 with a 10.30 start

Weds 7th: The enormous catch of fish

Weds 14th: The man let down through the roof

Weds 21st: Jesus at a wedding

Weds 28th: Only one said thank you



Doggy Days

Doggy Days – Day Care & Overnight Boarding
Doggy Days – Walking & Taxi service
Competitive Rates. Full Insurance and CRB
Call/email: Colleen on 07973-282568
colleen.reed@btconnect.com
Claydown Way, Slip End

**TO ADVERTISE HERE...
PLEASE
CONTACT JO MOSS ON
01582 484373
OR EMAIL
PNAdverts@slipend.co.uk**

Charisma Hair & Beauty Salon

Ladies &
Gentlemen
01582 722801



Opening Times

Mon: 9-3
Tues: 9-5
Wed: 10-1
Thurs: 9-6
Fri: 9-7
Sat: 8-3

Easy Parking - Remedial Massage
Ear Piercing available now £5 per lobe
43B Elm Avenue, Caddington
www.charisma-caddington.com



Find us on facebook

NEIL SHEPHERD
Painter & Decorator
Fully Insured & Approved
07860 93 93 93

Chiropodist State Registered

Home visits
Evening &
Weekend appointments

Keith Appleby BSc (Hons), MChS, SRCh

Telephone: 01582 873136

Castle Shutters
Specialist supply & installation
Garage Doors
3 Phase Car Park Shutters
Roller Shutters
Security Gates & Grilles
Fire Shutters
DOMESTIC - COMMERCIAL - OFFICE
0775 116 0390 / 01582 483883
admin@castle-shutters.co.uk
WWW.CASTLE-SHUTTERS.CO.UK

TRU Accountancy

CAROL BRENNAN ACCA FMAAT
CERTIFIED CHARTERED ACCOUNTANT

74 FRONT STREET

SLIP END

LUTON

LU1 4BS

TEL: 01582 453049

MOB: 07979 402847



**Need a reliable
Window &
Carpet Cleaner?**

We operate in the
Slip End area
For free quotation
contact us on
01462 629302
07970 406 926

DOMESTIC APPLIANCE REPAIRS



Washing Machines, Dishwashers,
Driers, Cookers, Microwaves,
Fridges & Storage Heaters



Barrie Acton

Slip End (01582) 728865
or Mobile 07802 723160

A. McClelland Pest Control



For fast response call
Mobile 0777 494 8415
or office 01582 872158

e-Mail: amcclellandpestcontrol33@gmail.com

St Andrew's News and pictures

Confirmation service—Sun 21st Jan



Marion and Richard Palmer at one of the Christmas services.

(more Christmas pictures on p14/15)

Farewell to friends

Members and friends gathered on 7th January to say farewell to the Kelly family who are leaving to worship elsewhere, nearer to home. They have been part of the church family for a good few years. Charlotte was a member of the group of young people and she and Russell were married here in August 2002. Their children were both baptised at St Andrew's. They have been involved with a lot of the music, including forming the Band, as well as children's activities



and services and Holiday Clubs. They will be missed by everyone.

Cathy Pullinger thanked them all and they

received gifts from the Church including a photo collage. After the service there was a Bring & Share lunch.



Bishop Richard of Bedford attended the Confirmation service for the candidates who were being confirmed and also for Jane Nugent who was reaffirming her Baptism promise. The candidates were Patricia Andrews, Steve Baird, Karen Noel Nugent, Zoe Plummer and Diane Taylor. At the end of the service the Bishop led the candidates, who were carrying their lighted candles, to the back of the Church.



NEVILLE

FUNERAL SERVICE

Established 1875

Reassurance when you need it most



Neville Funeral Service

Neville House Marsh Road Leagrave Luton LU3 2RZ

t: 01582 490005 e: luton@nevillefuneralservice.com



www.nevillefuneralservice.com



The Plough Bar and Restaurant

Woodside Road, Nr Slip End, Luton LU1 4LU

Tele: 01582 720923

www.theploughwoodsideluton.co.uk

find us on Facebook

Family Bar & Restaurant

with Large Garden, Childrens Play Area, Car Parking

Baby Changing and Disabled Facilities

The Hub of Woodside

Serving the Best Food and Drink

Serving Lunch including All Day Breakfast from 12 pm to 3pm

Evening Meals served from 5 pm to 8 pm

Sunday Lunch served from 12pm to 4 pm

Our Restaurant is closed on Sunday Evenings from 4 pm

and on Monday Evenings from 3 pm

Booking is Advisable please contact us on 01582 720923

For all table reservations of 6 or more booking is essential

Roasts Served Everyday

Monday to Saturday £7.50

Sunday £8.50

Childs portion £3.95

Choice of Lamb, Beef, Chicken, Pork
or Vegetable & Apricot Nut Roast (v)

*All served with fresh seasonal vegetables
Roast Potatoes and Yorkshire Pudding*

Parties and Special Occasions

We cater for all Parties, Special Occasions, Weddings,
Christenings, Funerals, Baby Showers etc **VENUE FREE**
For more information please call us on 01582 720923

OUR FARMING YEAR

Angela Speirs of J Speirs & Son, Pepsal End Farm, provides a monthly insight into agricultural life

The snow in December signalled the end of grazing for the cattle still out at grass and we hurriedly brought the last 25 in to the strawed yards at the farm. Calving of our 118 cows started on December 20th and we now have around 40 calves including 2 sets of twins. Sadly we have also lost 3 stillborn calves. Some cows bond with their calves immediately from birth but others require some encouragement and assistance. As most cows calve at night there is sometimes confusion by the mother when a few cows calve at the same time. It can often take some sorting out in the morning and occasionally a mother and her calf need to be separated into a bonding pen for a few days before returning to the main yards. Our 4 bulls through the winter are in pens separate from all the females having a well-earned rest until the spring.

When a calf is born it is essential that it receives colostrum (mother's milk) within the first 6 hours of birth as this gives the calf the vital antibodies to build its

immunity to disease. Calves also receive a squirt of vaccine in

the nostrils to prevent pneumonia within their first 3 months of life and an ear tag in both ears showing our herd number and their individual identity number – which appears on their passport. This number stays with them throughout their life and is registered with the British cattle movement service which is a national register for all cattle movements.

Also, at this time of year we are busy loading out grain from last harvest. At the moment we have malting barley being sent to a maltings in Norfolk who have contracts with Budweiser and Sapporo, a Japanese brewer. We also have oats being delivered to Bedford which will be used in Jordans breakfast cereals. We load out 29 tonne lorries using our loader and bucket. Each loading takes 20 minutes and on wet days this can be a frantic exercise as the grain has to remain below 15% moisture and we have no facility to load undercover.





enjoyable sing-along to tunes new and old.

Santa arrived just in time to give out a host of raffle prizes to the lucky winners. It was one of our

Good Neighbour Scheme

Christmas Party, December 6th

Nearly sixty local residents, clients and friends attended the Good Neighbour Scheme Christmas Party this year, held at the village hall.

biggest raffles to date and the proceeds helped to cover the cost of the afternoon.



Thank you to all our volunteers and committee members who helped to make this a really festive occasion.

Seasonal fayre was provided by our ladies, as residents were entertained by Peter Smith and friend on Ukuleles. A really

If you would like to find out more about getting involved as a volunteer with the Good Neighbours, please call Simon Patterson on 01582 419 487 or email smp1511@sky.com

Simon Patterson

Community Projects Group



SANTA CLAUS CAME TO THE VILLAGE

Senior residents of the Parish were again treated to a box of festive biscuits and a Christmas card from the CPG and Parish Council this year. In all some two hundred and twenty three tins were distributed by our helpers throughout Slip End, Aley Green, Woodside and Pepperstock just before Christmas. The gift is partially funded by our Parish Council together with donations from businesses in the village.

Our thanks go to all the local businesses who gave so generously to support our senior residents - Citroen Garage Slip End Ltd, SGC Scaffolding Ltd (Dunstable), Mignonette Bridal Services of Church Road, Tony Glynos of Luton, Neville's Funeral Services of Marsh Road, and J & P Scaffolding of Pepsal End Lane. A further thank you to our team of distributors who resolutely tramped through the snow and ice to deliver the gift this year. Many thanks and a very happy and healthy New Year to everyone.

We hope you enjoyed seeing Santa on his sleigh in December. He enjoyed waving and talking to you and hopes that you enjoyed your chocolate treat from the elves.

Thank you to everyone who helped us - with the new improved music system, the loan of the truck, plus, of course, all the elves who accompanied Santa Claus on the two nights, with special mention for Sean who drove Santa successfully down some icy roads this year, and Dick who drove behind him with lights flashing and a "Santa Ahead" sign to warn approaching cars.

We were amazed at the generosity of you all and are delighted to let you know that, as a result of the collection, we have £830, to donate to charity with the lion's share going to Keech Hospice Care, plus smaller donations to some of the groups and societies in the Parish.

The good news is that Santa Claus said he will come to see us again next December!

Photos from Christmas



Santa visited Slip End!
Thank you to his Elves and helpers (some shown here)



Christmas flowers at St Andrew's



Some of the Line dancers enjoy a pre-Christmas dance..
We meet on a Wednesday morning in the Village Hall to do a little exercise and above all have fun.
If you are interested in seeing what we do, drop in some time, between 10am and midday.



School Nativity - year 3

including "Joseph's reaction to finding out that Mary is pregnant"



St Andrew's Church Nativity including the children's music group

Christingle Service



Aley Green Methodist Church

Services and Diary Date for February

Sunday 4th

10.30am Morning Service - Communion
Rev A W Trotman

10.30am Sunday School

Saturday 10th

8.00am Prayer Breakfast

Sunday 11th

10.30am Morning Service
United Service at Farley Hill Methodist Church

Tuesday 13th

10.00am/12.30pm 'Pancakes & Company'

10.30am - 11.00am Little Lambs

Sunday 18th

10.30am Morning Service - Shepherd Kombo

10.30am Sunday School

Monday 19th

7.30pm Lent Fellowship ~ Week 1
led by Jo Prowse

Sunday 25th

10.30am Morning Service - Colin Quine

10.30am Sunday School

Monday 26th

7.30pm Lent Fellowship ~ Week 2
led by Jo Prowse

Wednesday 28th

7.30pm Coffee Evening
For Leaders of Worship & Preachers Trust

A big thank you to everyone who came to Aley Green over Christmas and New Year to support our services and events.

The snow in early December caused us to cancel our Sunday morning service and our Cakes & Company and Little Lambs on the Tuesday. It looked beautiful but almost brought the village to a standstill.

The Bacon Buttie Coffee Morning at the beginning of December was a great success, we had to send out for more bacon and rolls. A good time was had by all and the result was £523.65 which will help with the running costs of our Church.

Our Carol Service led by Rev Nigel was well attended, our choir sang like angels. A lovely evening rounded off with seasonal refreshments and the draw for the Christmas Hamper in aid of Methodist Homes for the Aged which was won by Mike Bull. Our offering for Action for Children raised £146.64.

Our Christmas *Take Time* led by Liz Higgins was very moving, we learned about the work of 'Ellie's Haven' a charity providing holidays for families caring for children with long term and life limiting medical conditions and disabilities, in a specially adapted property in the Looe Valley in Cornwall. We were pleased to hear from Mary Rishworth about the holiday they had with son Jack there last year. We were able to send a fantastic £205.25 donated by those attending. As always the afternoon was rounded off with festive refreshments and endless pots of tea.

The Aley Green Family Christmas Card raised £25 for the Bible Society, the Christmas Hamper Raised £80 for Methodist Homes and calendar sales for Motor Neurone Disease £35. We had a bonus for Macmillan Cancer Care, a collection box was left on the bar at the Cricketers to collect small change and added £20 to the years efforts. (Thanks to Dave & his customers)

Christmas Morning worship saw over forty people gathering for a service of carols and readings, our offering totalled £107 for NOAH, the homeless charity.

Do join us for Pancakes and Company on Shrove Tuesday 13th February. You can enjoy a bacon roll, fried egg roll, sausage rolls, scones, muffins and of course a pancake or two. There will be stalls, cakes, preserves and a raffle. Hope to see you there

Gods Blessings for 2018 from all at Aley Green
~ Ann Meader Senior Steward

Gardening Tips by *Russell Sprout*

Another gardening season is about to begin and there is plenty of preparation you can be doing. It's Open Gardens this year and the Gardening Club Committee will be looking for willing participants, old and new, so give it some thought.

(Here is an example

from a previous year—Ed)



If you have a soil testing kit this is a good time to test to see if lime, nitrogen or potash is required to balance the soil. This is quite easy to do, just follow the instructions that come with the kit, you don't have to be a scientist. Clear away any dead plant material and keep on top of weeds as they start into growth.

Check Dahlias in store, cut away any rotted sections of tubers and if they are shrivelled plunge them into tepid water for 10-12 hours. Take cuttings of Chrysanthemums that have been overwintered in the greenhouse or cold frame as soon as the new shoots are big enough. Stools that have been left in the ground will benefit from pushing a fork into the ground around the plant to stop rotting and clear away any weeds or debris that have accumulated. Any alpines that have been loosened by frost should be firmed into place and weeded.

If the lawn is becoming wet and boggy aerate with a fork to help drainage and scarify towards the end of the month to remove dead grass and thatch if conditions are dry enough.

If you plan to plant tomatoes in a cool greenhouse in April now is the time to sow seeds in a propagator or indoors on a windowsill and pot them on when they are about 2" high. Early peas and broad beans can be planted in the soil towards the end of the month if it is dry. Shallots can also be planted this month and just cover them with soil to stop birds from pulling them out of the ground. Early

potatoes can be arranged in boxes or seed trays with the eyes uppermost in a light frost-free shed, greenhouse or cool bedroom to sprout into growth for an early crop.



Prune autumn fruiting raspberries close to the ground by the end of the month. Parsley can be sown outdoors if dry and not too cold for a first crop. Mint can be propagated now by digging up the runners just below the surface, separate them from the main plant, cut into lengths of approximately 6" long and plant. Mint is best planted in a container to stop it spreading everywhere.

If you are thinking of taking an allotment contact Derrick 736829 or Steve 423622 and enjoy plenty of fresh vegetables throughout the year, as well as keeping yourself fit. **USE THEM OR LOSE THEM!**

**Frog &
Rhubarb**
Country Pub & Dining

HOME MADE FOOD

01582 452722
www.frogandrhubarb.co.uk



Butterfly Funerals

INDEPENDENT FAMILY
FUNERAL DIRECTORS

To find out more or just have a discussion
on what you need to do after a bereavement

please call

01582 968130

or visit our website:

www.butterflyfuneralsltd.co.uk

**39 Elm Avenue, Caddington
Luton LU1 4HS**



Caring with Compassion



Butterfly Funerals is run by Teresa and Peter who have been in the funeral service business for over 30 years. During that time they have gained a first class reputation for professional quality combined with a caring and compassionate approach to family and friends of the departed.

Services include:

- 24 hour call out 7 days a week
- Traditional funerals
- Bespoke funerals Pre-paid funerals
- Green funerals
- Memorial consultants
- Chapel of Rest
- Home visits
- Flowers
- Custom wills

Gardening Club

At our last meeting of the year, in November, speaker, Michael Brown, gave an interesting and amusing talk on a “Bouquet of Weeds”. “We curse them and try to kill them but in the past most of our common weeds were grown on purpose because they were useful; yes, even Ground Elder! Learn how to love your weeds and get your own back at the same time. “

The talk was followed by the annual social finger buffet, provided by members, along with drinks to finish off the year.

The annual programme of garden visits under the National Gardens Scheme is being prepared and will be ready in March.

PN Gardening Correspondent

BEARS!! *by Alison Wilson*

Anyone who knows me will know that I am rather keen on both bears and photography! I have also been a member at ZSL Whipsnade Zoo for many years and remember back in the early 1990s when there was a collection of 5 bears— including 3 cubs.

Recently the Zoo has brought in 3 cubs from Sweden to keep the last old bear (Wellington) company. They are very active and fascinating to watch. Here are a couple of pictures to “wet the appetite”.



GARDENING CLUB

**MON 19th March
(8pm Village Hall)**

**Guest speaker
Felicity Brimblecombe
“Luton Hoo Walled
Garden”**

**New Members Welcome
Guests/Visitors £2 each**



Come along to our
EASTER TEA PARTY

VILLAGE HALL

WEDNESDAY

28th March 2.30 UNTIL 4.00

ALL RESIDENTS OF SLIP END, PEPPERSTOCK,
WOODSIDE AND ALEY GREEN ARE WELCOME



Happy Easter

FROM THE SLIP END GOOD NEIGHBOUR SCHEME



SLIP END SOCIAL CLUB

*New Street, Slip End
Tel: 415804*

*New members
& their families welcome!*

*Be social
make it your local!*

**Big Screen Live Sky Sports - Pool - Darts - Crib - Dominoes
Bingo Wednesdays - Saturday Night Entertainment fortnightly - Golf Society**

*Opening times: Weekdays: 4.00 to 11pm
Saturdays: 12 noon to 12 midnight Sundays: 12 noon to 11pm
Usual Club prices!*

Smart Houndz

The smartest houndz in town

Professional Dog Grooming

All sizes & breeds welcome

Hand stripping, nail clipping scissoring & clipping
Contact

Paul Wager (Caddington) 07875 409933

City and Guilds Level 2 & 3 Qualified

www.smarthoundz.com paulmwager@hotmail.com

PH SERVICES

**CAR & MOTORCYCLE REPAIRS
PHILIP HALL
MECHANIC**

- ✓ Servicing ✓ Bodywork
- ✓ Tyres ✓ MOT
- ✓ Computer Diagnostics



**UNIT 3
MANOR ROAD GARAGE
CADDINGTON**

**Office: 01582 722251
Mobile: 07769 734417**

*Damaged bikes wanted for Cash
Nationwide collection*

e-Mail: philhall1200@btinternet.com

10% Discount with this voucher!



**REMEMBER _ WE HAVE
ADVERTISING SPACE
AVAILABLE FOR YOU AND
YOU BUSINESS!**

**TO ADVERTISE HERE...
PLEASE
CONTACT JO MOSS ON
01582 484373
OR EMAIL
PNAdverts@slipend.co.uk**

News in brief

Some residents of the area around visit to their homes. Summer Street requested that the B Ray following two items were included in this issue.

Boxing News

Dog owners:-

When walking your dog, please bring a bag with you as your dogs are leaving their deposits in Old School Walk. This is not very nice as children walk that way to school.
Upset resident.

(NOTE—Dog bins can be found in various places around the village. Please remember to be considerate to other users of all our pavements and walkways. Ed.)

SEADA

Thank you to the neighbours in Summer Street for their donation on Christmas Eve when Santa made a

Information for those who support him about the next bout in which Jason will be fighting

Jason Cunningham Vs Paul Econonmides

Saturday 24th February 2018

Doncaster Dome

British Super Bantam Weight title

10 rounds

Ringside £60, waitress service

Standard £40

For tickets phone Pete Ray on 01582 414796.

SLIP END VILLAGE DAY ON SATURDAY 7TH JULY

Plans are in hand for Village Day to be held again this year and we hope to see everyone at the Playing Fields from 11 o'clock until 4 o'clock on Saturday 7th July.

If you have any good ideas for stalls, entertainment, or can help with the organising in any way please get in touch with us using the contact details below:

slipendvillageday@yahoo.com
or phone us on 01582 728865 or 07958587595

KEEP THE DATE – SATURDAY 7TH JULY

Central Bedfordshire Council Information

Parish News receives regular email updates from Central Bedfordshire Council. There were a couple of recent information emails which might be of interest to residents. Extracts of some of the information are included here.

Budget

One of the emails asked for residents comments on budget proposals for the year 2018-19. The closing date of 29th January is unfortunately before the likely delivery date for this issue, however, I am sure the information is still on the website if you are interested in finding out how your money was spent and what is suggested for the next year. The summary chart (left) was included in the email received.

Central Bedfordshire Local Plan

Another resident has sent on an email about the Local Plan. A consultation period on this began on Thursday 11th January 2018 for a period of six weeks

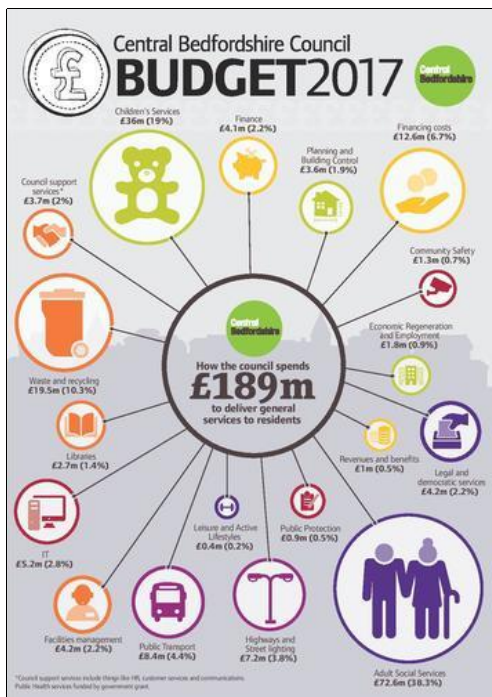
until 5pm on Thursday 22nd February. Details about the local plan can be seen on the website:-

<http://www.centralbedfordshire.gov.uk/planning/policy/local-plan/overview.aspx>

There are also opportunities to see it at some council offices and libraries and a few drop in sessions, though these are not in our immediate area.

In case you wonder what the plan is about, The introduction on the website is as follows:- Please look online for more information

The Local Plan sets out how Central Bedfordshire will develop over the next 20 years. It outlines the strategy for ensuring the growth that we need is delivered in the right place, and is of the right character and quality. It also ensures that growth is delivered with the supporting roads, schools and services such as health, as well as retail, leisure and community facilities.



Richard Gurney & Son Contracting Services

Longview, Luton Road, Markyate

*Tree Surgeons & Fencing Specialists
Hedge Trimming & Tree-stump removal
Wood Chippings (good for mulching)
Logs for Sale*

☎ (01582) 840407

Established 1970 - Fully Insured

**REACH HUNDREDS OF
HOUSEHOLDS ACROSS THE
PARISH AND ADVERTISE
HERE**

CONTACT JO MOSS ON

01582 484373

OR EMAIL

PNAdverts@slipend.co.uk

**PROBLEMS
WITH YOUR
PC OR
APPLE-MAC?**



*For expert advice & trouble shooting
call Tony Glynos, 458353 or 07792 653264
tonyglynos@outlook.com*

PILATES IN SLIP END

Tuesday morning, Peter Edward Hall 9.30am
Wednesday evening, Slip End School 7.30pm

All ages & levels catered for. Come & try, first class free.

Introducing the Pilates Reformer Machine. Ideal for rehabilitation after injury or surgery.

Perfect for sport specific training, Pre & Post Natal & general fitness.

For more information contact 07811343566 or
email:- golf58.ag@gmail.com

Hydrotech Plumbing

Your local plumbing and heating engineers:

- Boiler breakdown and servicing
- New Boiler installation
- Landlords gas safety certification
- Gas fire installation and servicing
- All gas and plumbing work undertaken
- Fully insured

Free quotations
MARKYATE based company

01582842889

07932796632



**TO ADVERTISE IN THIS
SPACE PLEASE
CONTACT JO MOSS ON
01582 484373
OR EMAIL**

PNAdverts@slipend.co.uk

**JOHN SAUNDERS & SON
Incorporating E. Franklin & Co.**

FUNERAL DIRECTORS

48 Duke Street, High Town, Luton



☎ 731696

Day & Night Service

Monumental Services

Members N.A.F.D.

Prepaid Funeral Plans available



Dunstable Ladies Choir entertained us with their Christmas songs. There were cakes and refreshments too! It was a really good evening to start the Xmas festivities.

Plenty of fun and laughter was had at our Christmas Meeting. Instead of a speaker we played 3 party games namely "Reindeer Drive", "Chinese Raffle" and "Twas the Night Before Christmas Gift Exchange Game" where you sit in a circle and when the story teller says the words left or right you pass your Christmas gift to either the person on your left or right. This was followed by an enjoyable bring and share supper. A visitor judged the competition which was to choose the best Advent Calendar. Carol Jones won with Joanne Sherwood second.

We had our Christmas meal at the Horse & Jockey. It was great to get so many members there as the weather was very cold and snow all round.

Christmas Tree Festival - our tree was white with red baubles and had W.I. teacups decorated with red baubles. It was a good display from everyone.

Our group meeting called Christmas Wonderland was very successful.. Each W.I. performed some entertainment on the stage and supper was provided. Later we sang carols. It was a good time to meet old friends.

Our ladies enjoyed their trip to the Shoe Factory in Rushden and shopping for shoes!

Our first speaker of the New Year was Howard Chandler. His talk was entitled Luton Street Names. Several members live in Luton so found his talk very interesting to learn where the different street names originated from. His talk was followed by a bag auction which always causes a lot of laughter with members bidding against each other. The competition was to find a good New Year's Resolution. Joanne Sherwood won 1st Prize with Carol Jones 2nd and Anna Bartlett 3rd.

Gyles Brandreth and Simon Michael are two talks organised for March. Members and friends are looking forward to this.

There is also an outing to the Fitzwilliam Museum in Cambridge which has an exhibition of 120 embroidery samplers and stories of young women over the past 300 years. This is open until 8th April for anyone to visit.

Other outings planned are an Indian Restaurant, a talk on the Jewish Way of Life and the Denman Day Lunch. *(Denman College is the WI centre for learning, Ed)*

A reminder that we meet on the 1st Tuesday of each month at the Baptist Church Hall, Caddington. LU1 4AF. at 7.30 p.m.

Linda Edwards



HIGH ELMS
Tree Surgery Ltd

01582 840144
07939 623675

www.highelmstreesurgery.co.uk
Email: info@highelmstreesurgery.co.uk

- NPTC CERTIFIED
- POLLARDING
- RESHAPING
- STUMP REMOVAL
- HEDGES TRIMMED, SHAPED & REMOVED
- DEAD WOODING
- REDUCTIONS
- CROWN LIFTING
- LOGS DELIVERED
- TREE REMOVAL
- T.P.O. & PLANNING APPLICATIONS
- TREE SURVEY INSPECTIONS & REPORTS



FREE Estimates & Advice
Fully Insured to £10 million & Approved by Local Authorities

Herts, Beds, Bucks & London + we will beat any written quotation Registered in England No. 5100475 VAT Reg No. 247 4281 12

HARPERS

PURVEYORS OF FINE FOOD AND WINE

Do you have something to celebrate?



Large or small, casual or elegant we can accommodate your special event and make your day memorable.

We can provide you with a menu to suit you from a finger buffet to a three course sit-down meal. We can offer a full bar service, a comprehensive range of menus and wines are available for you to choose from.

Our fully qualified Events and Catering team will lead you through the organisation process.

Our venue is ideal for funerals, parties, corporate events, weddings, birthdays and anniversaries.

We can also deliver our catering to your chosen home or venue.

If we can help, please contact us on 01582 872001 or email info@harpersfood.co.uk

Painting & Decorating **PETE the PAINTER**

for all your decorating needs

- Laminated Flooring
- Carpentry Work undertaken
- Tiling - Floors & Walls
- Over 20 years experience

4 Elm Avenue Caddington

Call for a free Quotation

Tel: 01582 453611

Mobile: 07971 348485



Stoten Gillam chartered accountants chartered tax advisers

PRACTICAL SOLUTIONS FOR GROWING BUSINESSES

ACCOUNTS TAXATION
AUDITS FINANCIAL
ADVICE PAYROLL
COMPUTER SERVICES

01582 608601

Alban House
99 High Street South
Dunstable LU6 3SF

www.stotengillam.co.uk
enquiries@stotengillam.co.uk



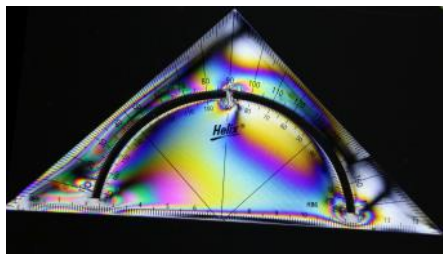
Slip End Photography Group

We ended the year with a Christmas party at the Social Club on a very snowy and icy evening. It was a pleasant evening of chat and food. The buffet, provided by Lainy was excellent, as always. Unfortunately a number of members were unable to make it at the last minute, mostly due to the weather.

The new year of activities started on Tuesday 16th January with a demonstration using polarising filters to photograph coloured stress patterns on various plastic items. (I haven't done this since physics lessons at school!.)



Thanks to Andy Prothero who organised this and to visitor David Bond who brought along some kit to help out.



Activities planned for the year include pictures shows by members and by the ever popular Andy Sands as well as talks by other visiting speakers.

The annual Photography and Art Exhibition is planned for Saturday 28th April. (more details soon)

For more information contact Norman Homewood (details in back of magazine) or drop in to the Social Club on a Tuesday evening. Formal talks are on the third Tuesday at 8pm. An informal evening is held on the first Tuesday. At any other time, members may be there for a social evening and chat.

Pub News

The Plough

We are now the local pickup point for the weekly Herald and Post, you can collect copies from inside. See advert for information.

www.theploughwoodside.co.uk/

Frog & Rhubarb

The Chatty Club meets here every Tuesday between 2pm and 4pm
www.frogandrhubarb.co.uk

Social Club

See the noticeboard at the Club for events.

3rd March 8pm –Fish and Chip Supper and Live Music (Gerry Attricks) in aid of Keech. £7 per ticket - contact the Club for more details

Rising Sun

Drop in to find out what is happening.



INKERMAN

BUILDING & ROOFING Co.

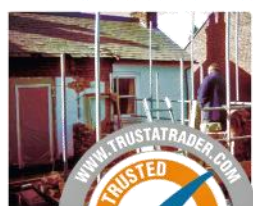
EXTENSIONS - CONVERSIONS - RENOVATIONS

- ✓ Restoration ✓ New Build
- ✓ Flat & Pitched Roofing
- ✓ All General Building Work
- ✓ Painting & Decorating
- ✓ Electrical Works & Plumbing
- ✓ Brickwork Contractors
- ✓ Patios & Driveways ✓ Fencing
- ✓ Groundworks/Drainage
- ✓ Insurance Work
- ✓ Garage Conversions
- ✓ Public Liability Insurance

EXTENSIONS • CONVERSIONS • RENOVATIONS

www.inkermanbuilding.co.uk

**The Complete Design
Plan-Completion Service Included**



Tel: 01727 835702 or Mobile: 07774 95255

Tel/Fax: 01582 876509

Email: info@inkermanbuilding.co.uk • 46 Church Road, Slip End, Bedfordshire LU1 4BJ



Local Independent Locksmith

Call Steve—

01582 318307 / 07580 716415

- FREE Lock / Security Review
- Lock Fitting / Upgrades
- Entry using Non-Destructive methods
- Competitive Pricing
- Police Vetted



SJ Locks

www.SJLocks.co.uk



@SJLocks



Diary - If you would like your events included, please contact the Editor

February

- Mon 5th Parish Council Meeting Village Hall 7pm
- Tues 6th Caddington WI Baptist Church Hall 7:30pm
- Tues 13th Pancakes and Company—Aley Green Methodist Church 10-12am
- Tues 20th Photography Group (Picture Show) Slip End Social Club 8pm
- Tues 27th Book Club Frog and Rhubarb 8pm

March

- Sat 3rd Charity Fish & Chip Supper & Live Music Slip End Social Club 8pm
- Mon 5th Parish Council Meeting Village Hall 7pm
- Tues 6th Caddington WI Baptist Church Hall 7:30pm
- Mon 19th Gardening Club Guest Speaker Village Hall 8pm
- Tues 20th Photography Group (Andy Sands) Slip End Social Club 8pm
- Wed 28th GNS Easter Tea Party - Village Hall 2:30—4:00pm (see poster)

April

- Mon 9th Parish Council Meeting Village Hall 7pm
- 7th July ADVANCE NOTICE - Village Day Save the date!
- Sat 14th Village Open Gardens Day 11am—5pm
- Mon 16th Gardening Club Guest Speaker



Bin collections

Black bin and Glass - Friday 9th, 23rd February

Orange bin- Friday 2nd, 16th February & 2nd March



Don't forget to advertise your events here!

Please contact us with details of events to add to our diary so that everyone in the community can read about what is on in the Parish and hopefully avoid any clash of dates for events!



YOUR PARISH & CENTRAL BEDS COUNCILLORS

Clerk to Parish Council — Peter Segal 526594 (9am to noon weekdays)

clerk@slipend.co.uk

Parish Councillors:-

Paul Cooper (Chairman)	07703 599006	paul-cooper@indigo-tiger.com
Sarah Minnighan (Vicechairman)	07868 742904	s.minnighan@outlook.com
Steve Baird	738205	Steven.Baird@cooperindustries.com
Simon Patterson	07767 615714	smp@amida.fsworld.co.uk
Carol Brennan	453049	carolbrennan74@aol.com
Carol Beeton	405597	cmbet@gmail.com
Paul Shaw	07957 188947	porkypygge@gmail.com

WHO DO I CALL?

Fly Tipping (CBC) 0300 300 8000 wasteservices@centralbedfordshire.gov.uk

Road issues www.centralbedfordshire.gov.uk/transport/report/highways-fault.as

Police 01234 473211 or 101 **Aircraft noise** 395382 **Airparks** 749495
Water leaks 0800 3765325 **Cold Calling** 0345 4040506
Out of hours noise 0300 300 8098 **Street Lighting** 0300 300 8049

Your Central Beds Councillors



Cllr Kevin Collins

01582 417933

Kevin.Collins@centralbedfordshire.gov.uk



Customer Services
0300 300 8000



Cllr Richard Stay

01582 402602

richard.stay@centralbedfordshire.gov.uk

www.centralbedfordshire.gov.uk

We hold a surgery on the first Saturday of each month (ex August) at
Heathfield, The Green, Caddington between 10:00 & 12:00

PETER EDWARDS HALL & PLAYING FIELD

*Ideal for children's & adult's parties, meetings, etc.
Kitchen facilities with catering service available
Available for various sports activities
Excellent sports changing facilities
Facilities for the Disabled
For Bookings: please contact
peteredwardshall@slipend.co.uk*

MP's

Contact details

*Gavin Shuker's local office
is located at:*

3 Union Street
Luton LUI 3AN

Email: gavin@gavinshuker.org

Website: www.gavinshuker.org

*For advice surgery appointments
call 01582 457 774*



SLIP END VILLAGE HALL

Your Village Hall

for Dances, Receptions & Parties
Facilities for the disabled
For bookings contact
Gill Plummer on 01582 723109
9 Markyate Road, Slip End

COMMUNITY AND SERVICES

Services:- **Good Neighbour Scheme:** 07513 37 24 15
Shop at the Crossroads 401069 Mon - Fri 7.00 to 21.00 Sat 7.00 - 21.00 - Sun 7.30 - 21.00
Slip End Garage Markyate Road, 456888
Doctor Caddington Surgery 725673
Doctor Markyate Surgery 841559
Schools: **Slip End Village School** 720152 **Manshead** 679400
Caddington Village School 726058 **St Mary's Catholic Primary School** 602420

Churches:-

St Andrew's Church
Rev. Cathy Pullinger—vicarage 480391
or 07425 148046
Wardens: **Nick Sandle** 723029
Susan Wiltshire 727000

Aley Green Methodist Church

Minister: **Rev Nigel Bibbings**
Senior Steward: Ann Meader 733668

Sport:-

Bowling Club 412506
Darts League 425323
Football 517042 or 07515687160
Pepperstock Archers 615216
Email LBP121@aol.com (Lee Prebble)
Tennis 733253
Gardening Club 423622
Slip End Stompers Line Dancing
redhotstompers@googlemail.com
Dance Classes dance_liana@hotmail.com
Runners Peter Baber **07587 189260.**

Community:-

Photography Group 01582 452851
Brownies 01582 723109
Beavers 07956 833488
Cubs & Scouts 01582 418014
Allotments 01582 736892
Friendship Club 01582 452978
Playgroup/Pre-School 01582 724888
S.E.A.D.A 01582 414796
FoSELS (PTA) 0789 603 7853
Women's Institute 01582 737036
Chatty Club pja32@outlook.com
Jean Anderson
Slip End Veterans Football Wayne Leslie
wayne@dngsales.co.uk
Book Club jobullen@hotmail.com

Slip End Parish Community
is now on



Items for the next issue (March) to us by 15th February

(Editor — Matt) Adverts by 10th please

Any delivery problems? Contact Alan Buttery at 1 Claydown Way
(01582 724527), alanjan4546@gmail.com

Anything interesting to report about village activities, photos, holidays, etc
Please contact us, letters and e-mails are encouraged.

Views expressed by our contributors are not the Editors' own.

Articles should be sent by the 15th of the preceding month to the Editor - Alison Wilson,
23 Claydown Way or Matt Adams, 32 Summer Street or e-Mail parishnews@slipend.co.uk

Advertising queries to Jo Moss 01582484373 or PNAdverts@slipend.co.uk

Parish News is grateful to our advertisers for their contributions. Please support them.



CITROËN



ISO 9001 (2000 revision)
Certificate Number 424



SUBARU

ISUZU

Slip End Garage Ltd

- * **New Cars**
- * **Used Car Sales**
- * **Repairs**
- * **Spares & Service**

Markyate Road
Slip End

Sales: (01582) 456888

Parts: (01582) 411421

Service: (01582) 481600

Our Service Centre is
located in Grove Road
Slip End

e-Mail: info@slipendgarage.co.uk

www.slipendgarage.co.uk

Catering for all your motoring needs since 1939

www.slipend.subaru.co.uk

www.slipend.isuzu.co.uk

www.lutoncitroen.co.uk

sales.slipendgarages@imgroup.co.uk

sales@slipendluton.citroen.co.uk