

A stone tower with a crenellated top stands on a grassy hill. The foreground is filled with a dense carpet of white snowdrops. The sky is clear and blue.

# Parish News

**THE COMMUNITY MAGAZINE FOR YOU!  
WITH INFORMATION AND NEWS FROM YOU**  
delivered to the whole of the Parish

**April 2023**

**Aley Green Pepperstock  
Slip End Woodside**

*Snowdrops!  
Cover photo  
from Gardening  
Club outing*

## Editors' Notes

April brings us Easter, holidays from work and school and hopefully better weather. Easter is the time for new life

and new beginnings and is being celebrated in early April this year. Our local Churches have various activities and services for Holy Week and Easter Day itself. The GNS has an Easter party—see the poster opposite for details.

Our cover photo is one that was sent to accompany this month's Gardening Club report. It shows the incredible array of snowdrops at Benington Lordship (near Stevenage). We had a few snowdrops in our garden but, as I write, the daffodils are stubbornly keeping their flowers hidden. A recent visit we made to RHS Garden Wisley had many signs that Spring was around the corner but the cold and snow of the previous few days had caused all the flowers to close.

A popular topic on social media recently has been POTHOLE! Many complaints are being made about the number of them and their size. The Parish Councils in the area report what they can. However, one way to report them is via an App on a smart phone (if you have one) See page 17 for information.

If you are interested in keeping our villages safe, why not go along to the community Policing day on 3rd April. (see p 8)

With Parish Council elections coming soon, Parish News would like to thank those members of the Council who give their time for our benefit. Thanks especially to those who have provided us with regular updates and information that help to keep us all informed.

## Attention local organisations and sports clubs

Please check your contact details in the back of the magazine and send us any corrections.

If your club is not listed please let us know the details to add.

Send to:

[parishnews@slipend.co.uk](mailto:parishnews@slipend.co.uk)

Thank you

**Good Neighbour Scheme**

# **EASTER PARTY**



**Slip End Village Hall**

**Wednesday 5th April**

**2023**

**2.30pm to 4.30pm**

**BINGO & Refreshments**

**Easter Bonnets**

**Welcome!**

**For transport call**

**07513 372 415**



# PARISH COUNCIL UPDATE

The latest Parish Council Meeting was held on Monday 6th March in the Village Hall.

## **Three Planning Applications were discussed this month:**

CB/23/00399/FULL - 325 Manor Road, Woodside, Conversion of existing garage into habitable space with pitched roof and addition to existing side extension.

It was agreed to not comment on this application.

CB/22/0240/W/22/3313149 (appeal reference) CB/22/02141/FULL - Land next to 78 Woodside Road, Woodside (Appeal application) After a discussion it was agreed to not comment further on this Appeal. The original decision was to Object.

APP/P0240/W/22/3312091 (appeal reference) CB/21/03960/FULL - Land next to 66 Woodside Road (Appeal application). After a discussion it was agreed to not comment further on this Appeal. The original decision was to not comment.

## **Crawley Playground**

The Parish Council approved expenditure of £1,280 on foot grips for the zip wire ramps.

## **Parish Council Grants**

This will be discussed at the April Meeting. So far the Clerk has received two Grant Applications.

## **Good Neighbours Scheme**

An Easter Tea Party has been arranged for Wednesday the 5th April from 2.30pm to 4.30pm at the Village Hall. All Slip End Parish residents are welcome to attend.

The Soup and Sandwich scheme held each week at the Rising Sun will continue while the funding lasts.

### **Policing**

A Police Community Engagement event has been arranged at Slip End Village Hall on the 3rd April from 11.00am. It would be great if as many residents as possible could support this event.

*(SEE INFORMATION ON PAGE 8)*

### **Fly Tipping**

Woodside Road continues to be a Fly Tipping Hotspot. The Parish Council continues to press CBC regarding the installation of a camera; but so far without success.

### **Highways and Footpaths**

A badly damaged Woodside Road footpath between the speed table and Grove Road will be reported to CBC for repair.

The Parish Clerk will ask CBC Environmental Services about an additional Dog Waste Bin to be installed in Markyate Road close to the entrance to the Public Footpath towards Pepperstock.

### **Parish Trees**

The Parish Council will investigate the trees it owns in Old School Walk and this will be discussed further at the April Meeting.

*See also the notice overleaf concerning elections for the Parish Council.*



# NOTICE OF ELECTION

Central Bedfordshire Council  
**Election of Parish Councillors**  
to  
**Slip End Parish**

1. An election is to be held for a Councillor for the **Slip End** Parish.
2. The number of Councillors to be elected is **7**.
3. Forms of nomination may be obtained, during normal office hours, from the Returning Officer at the address shown below or from the Parish Clerk.
4. Completed nomination papers must be hand delivered to the Deputy Returning Officer at the address shown below, on any day after the date of this notice, during normal office hours but **not later than 4pm** on Tuesday, 4 April 2023.
5. If the election is contested the poll will take place on Thursday, 4 May 2023, between the hours of **7am** and **10pm**.
6. Applications to register to vote must reach the Electoral Registration Officer by midnight on Monday, 17 April 2023.
7. Applications for Voter Authority Certificates must be submitted before 5pm on Tuesday 25 April 2023.
8. Applications, amendments or cancellations of postal and postal proxy votes must reach the Electoral Registration Officer by 5pm on Tuesday, 18 April 2023.
9. Applications to vote by proxy at this election must reach the Electoral Registration Officer by 5pm on Tuesday, 25 April 2023.
10. Applications to vote by emergency proxy at this election must reach the Electoral Registration Officer by 5pm on Thursday, 4 May 2023.

Electoral Registration Officer & Returning Officer Address
Priory House Monks Walk Chicksands Shefford Bedfordshire SG17 5TQ

Dated:  
13 March 2023

Brian Dunleavy  
Deputy Returning Officer

## Scouting in our Villages



For the uninitiated, **Caddington Scout Group** began in 1938 and continues at its Headquarters on Dunstable Road. Slip End Scout Group has, in the last few years, become part of the Caddington group.

Scouting helps prepare Young People with Skills for Life and everyone is welcome.

All Sections are now for boys and girls. The Beavers Section is for Young People aged 6 to 8 Years Old, which runs on Friday evenings from 6:00 to 7:15. Beavers start their Big Adventure in Scouting by trying new activities and making new friends. In the last year, Beavers had an Activity Day including Pedal Cars and an Assault Course, they did the Cycling Badge at Houghton Hall Park, they did Blindfold Football, they made a Flower Display for the late Queen's Jubilee Celebration at All Saints Church and they did a Litter Pick at Slip End Church.

Cubs is for Young People from 8 to 9 ¼ Years Old, which runs on Tuesday evenings from 6:30 to 7:45. Wolves are for from 9 ¼ Years Old to 10 ½ Years Old on Thursday evenings from 6:30 to 7:45. Cubs and Wolves run a joint, exciting and varied programme with lots of fun and plenty of challenges. In the last year, Cubs and Wolves had a Camp including Bug Hunting, had a talk on Dunstable Downs by a representative of London Gliding Club, completed the Astronomer Badge at Putteridge Bury Observatory, had Soapbox Races at Stockwood and had a Fire Engine visit the HQ and they cleaned Caddington road signs.

Scouts meets on Monday evenings from 7:15 to 9:00 for 10 ½ to 14 Year Olds. Scouts master new skills, go on Adventures, Explore the World around them, Help Others and Make a Difference. In the last year, Scouts had a Camp including Climbing and Abseiling, Tree Planting at Bromham Scout Camp Site and Leaf Clearing at the Tree Cathedral in Whipsnade. Other activities were as varied as Circus Skills and a Veggie Car Race.

If you know anyone who would be interested in joining our Group, please contact Rita Tims ([ritatims@sky.com](mailto:ritatims@sky.com) or 01582 418014). We would also very much welcome further additions to our Team of Leaders and Occasional Helpers.



## Bedfordshire Police Community Engagement

Officers from Dunstable Community Team will be at Slip End Village Hall on Monday 3rd of April 2023 at 11am for you to come and speak to.

They'll have crime prevention freebies to hand out and listen to any concerns you have. Please come along, and say hello

Mutts & Moggies



**Kaz Brittain**

Dip.dog psy Dip.DG (Inst. L)

**07810 890290**

[muttsandmoggiespets@gmail.com](mailto:muttsandmoggiespets@gmail.com)

*Qualified &  
Experienced in Animal  
Management*

**Mutts & Moggies** have been looking after Bedfordshire, Hertfordshire and Buckinghamshire pets for the last 20 years.

We are a mobile service where we come and visit you in the comfort of your own home to care for your pets.

Some of the mobile services we offer are:

- Nail trimming
- Emptying anal glands
- Microchipping
- Cleaning and plucking ears
- Eye cleansing
- Wrinkle cream and balm
- Health checks
- Supplying food, toys and essentials
- etc...

And much more

## Slip End Preschool

- \* Wide range of experiences and extra-curricular activities for the children.
- \* Highly qualified staff
- \* Dedicated area and staff for 1-2 year olds
- \* Rated **GOOD** by OFSTED in September 2022

**Open Monday to Friday  
8:30am–3:00pm**

[www.slipendpreschool.com](http://www.slipendpreschool.com)

**Please contact Hayley Bolton on  
07889 824367 to arrange a free taster  
session**

**Slip End Toddler Group  
Each Monday from 7<sup>th</sup> November  
10am – 11:30 - Slip End Village Hall £2  
PER FAMILY  
EVERYBODY WELCOME**





## Aley Green Methodist Church



### Dates for April

Sat 1st 10am Prayer Breakfast led by church members

Sun 2nd 10:30am Service led by Catherine Roots & Sunday school led by Ann Meader

Tues 4th 10-12am Cakes and Company and Little Lambs Club

Good Friday 7th Walk of Witness start at Aley Green 10:30am

Sun 9th Easter Day 10:30am Service led by Martin Wallis & Sunday school led by Jo Prowse

Mon 17th 7:30pm Ecumenical Fellowship led by Jo Prowse

Sun 23rd St George's Day – 10:30am Service led by Colin Quine

Sun 23rd Preserve Stall at Heathfield Centre (11-4)

Wed 26th 7:30pm Coffee Evening in aid of A Rocha UK

Sun 30th 10:30am Service led by Steve Rogers

Also Tues 2nd May 10am Cakes and Company and Little Lambs Club

Sun 7th May 10:30am Service led by Justin Anwar & Sunday School

We have a service every Sunday with Holy Communion once a month. Our Sunday school is now held on

the first and third Sundays. Children, from aged 3, are told Bible stories, sing and do lots of craft.

Little Lambs Club (for babies & pre-school children) meets alongside our regular community "Cakes and Company" on the first Tuesday from 10 to 12am.

Each month our coffee evenings raise money for charity. In January we sent £86 to Action for Children and in February a similar sum for Leaders or Worship & Preachers Trust. At Cakes and Company and coffee evenings we sell preserves – jams, chutney, jelly, marmalade and picalilli, as well as cakes, sausage rolls, books and puzzles.

This year we hosted the World Day of Prayer service with members of all five village churches taking part. £168 was raised.

The Walk of Witness on Good Friday starts at Aley Green, going to St Thomas onto the Village Green, then to the Baptist Church, finishing at All Saints for refreshments including Hot Cross Buns.

We look forward to seeing you. You will always be given a warm welcome at our Church.

*Ann Meader, Steward*

## Harpers no more!

If you don't know by now, Harpers has finally officially closed. It is so sad to see it go after the years it has been in the village (since June 2014). It was so convenient to pop along for drinks with friends, a nice meal with visiting relatives or on special occasions have the afternoon tea. It will be sorely missed. Harpers also put on twice yearly events for its members, which were well attended, where you could taste some of their delicious food.



Parties, Baby Showers, Weddings and Funeral receptions were also held there.

In the last few months they have been selling off their stock from the kitchen, store room and Oak Room, as well as discounted food from their freezers. It was all very sad to see.

I went along the week it was closing and Mr Harper was there, along with a few members of staff. They are disappointed that Harpers has had to close, due to the rising costs of energy, which they just couldn't continue paying.



Good luck to all the staff and hopefully they will be able to find new jobs close by. Slip End will not be the same without you.

*Report by Sue Briggs*

*Mr Harper with Sue, Eleanor, and Jane*





Our school has been a buzz of energy over the last few weeks. We started this half term with a special enrichment week where we explored life in different countries. Our whole school came together for an assembly where we learnt about airports and flights, before each class landed in a different country. At the end of the week we were set to celebrate the Hindu festival Holi but unfortunately the weather postponed the event for a week.

We were delighted when the following week we were able to bring our whole school community together and enjoy the festival. We started the day by learning about the story of Holi that was shared with us by a previous parent. The children listened while we heard about how this festival is celebrated in Spring and involves bonfires, lots of coloured paint and baskets of flowers. Our afternoon culminated in an exciting colour run on the school field. You can see from our photos what an exciting and happy event this was for all involved.

Our annual tradition for celebrating World Book Day also took place this half term. Whilst we enjoyed the usual fun of dressing as book characters, we also held an egg decorating competition. We were amazed by the creativity of our children and the time they devoted to this art project. As you can tell by our photos staff really struggled to choose winners.

Our “Slip End’s Got Talent” event is very close and we are looking forward to celebrating all the wonderful talents of children in our school. We look forward to sharing these with you soon.



Helen Brind  
Head of School



## GARDENING CLUB

The first garden visit of the year was to Benington Lordship, near Stevenage to see the snowdrops.

The gardens are opened every year in February when they are carpeted in a spectacular display of naturalised snowdrops around the remains of the Norman keep and surrounding moat. Hellebores, aconites and winter flowering shrubs are also in flower, as well as the coloured stems of acers, cornus and willow around the ponds. Two main species of snowdrop make up the spectacular display: the single common snowdrop *Galanthus nivalis*; and double *Galanthus nivalis* 'flore pleno.'

The snowdrop walk, which runs along the wall at the top of the moat, was planted in the early twentieth century by the present owner's family. Opening the gardens at snowdrop time became an annual tradition which has continued to the present day.

The annual programme of garden visits under the National Gardens Scheme is to be prepared and hopefully will be available within the next month or two.

*PN Gardening Correspondent*



Mon 19th June  
Village Hall, 8pm  
**Gardening Club**  
Guest Speaker—Keith Winter  
Table Flower Arrangement/Demonstration



New Members Welcome  
Guests/Visitors £2



*Gardening Club outing*

*Also see the cover photo*



## Local agents, Local knowledge

Whether buying, selling or renting, we provide a personalised, professional and individual service to help make your move as smooth as possible. Speak to one of our friendly team today.



**01582 841 200**

[sales@towncountry.uk.net](mailto:sales@towncountry.uk.net)

1 Manor Road, Caddington, Bedfordshire, LU1 4EE

**Town &  
Country**

# Richard Gurney & Son Contracting Services

Longview, Luton Road, Markyate

*Tree Surgeons & Fencing Specialists  
Hedge Trimming & Tree-stump removal  
Wood Chippings (good for mulching)  
Logs for Sale*

**Tel. (01582) 840407**

*Established 1970 - Fully Insured*

## Hydrotech Plumbing

Your local plumbing and heating engineers:

- Boiler breakdown and servicing
- New Boiler installation
- Landlords gas safety certification
- Gas fire installation and servicing
- All gas and plumbing work undertaken
- Fully insured
- Free quotations

MARKYATE based company

**01582842889 07932796632**



## P H SERVICES

CAR & MOTORCYCLE REPAIRS  
PHILIP HALL  
MECHANIC

- 4 Servicing
- 4 Tyres
- 4 Computer Diagnostics
- 4 Bodywork
- 4 MOT



UNIT 3  
MANOR ROAD GARAGE  
CADDINGTON

Office: 01582 722251  
Mobile: 07769 734417

*Damaged bikes wanted for Cash  
Nationwide collection*

e-Mail: philhall1200@btinternet.com

10% Discount with this voucher!



## STROBE ELECTRICS

ELECTRICIAN

NIC APPROVED

ESTABLISHED 25 YEARS

House Rewires Part P REG

No Job Too Big or Small

For a job well done

Quality Assured

Call Graeme

**01582 451442 or 07956 70692**

**Problems  
with your  
PC or  
Apple-mac?**



*For expert advice & trouble shooting  
call Tony Glynos, 458353 or 07792 653264  
[tonyglynos@outlook.com](mailto:tonyglynos@outlook.com)*

Friendly

**Karen Jordan**

07970487338

Grass Cutting

Weeding

Strimming

General Tidying



Reliable

Local

## PILATES IN SLIP END

Tuesday morning, Peter Edwards Hall 9.30am  
Wednesday evening, Slip End School 7.30pm

All ages & levels catered for. Come & try, first class free.

Introducing the Pilates Reformer Machine. Ideal for rehabilitation after injury or surgery.

Perfect for sport specific training, Pre & Post Natal & general fitness.

For more information contact 07811343566 or email:- [golf58.ag@gmail.com](mailto:golf58.ag@gmail.com)

**JOHN SAUNDERS & SON  
Incorporating E. Franklin & Co.**

## FUNERAL DIRECTORS

48 Duke Street, High Town, Luton



% 731696

Day & Night Service

Monumental Services  
Members N.A.F.D.

Prepaid Funeral Plans available



**St Andrew's Woodside**  
**Community Coffee Morning**



**Saturday 29<sup>th</sup> April 2023**  
**10.00 am to noon**  
**at St Andrew's Church**

**Tea, coffee, conversation and good company.**  
**What special treats will Paula have in store this**  
**month?**

**Come and see.**

**Drop in at any time. All welcome.**

**Contact Julie on 413912 if transport is a problem.**

# @WAYNE'S

*Professional Hairdressing  
for all the family*



@WAYNE'S - Church Road, Slip End - 01582 294 248

## Butterfly Funerals

INDEPENDENT FAMILY  
FUNERAL DIRECTORS

To find out more or just have a discussion  
on what you need to do after a bereavement

please call

**01582 968130**

or visit our website:

[www.butterflyfuneralsltd.co.uk](http://www.butterflyfuneralsltd.co.uk)

39 Elm Avenue, Caddington  
Luton LU1 4HS

*Caring with Compassion*

Butterfly Funerals is run by Teresa and Peter who have been in the funeral service business for over 30 years. During that time they have gained a first class reputation for professional quality combined with a caring and compassionate approach to family and friends of the departed.

Services include:

- 24 hour call out 7 days a week
- Traditional funerals
- Bespoke funerals Pre-paid funerals
- Green funerals
- Memorial consultants
- Chapel of Rest
- Home visits
- Flowers
- Custom wills



# Fed up with pot holes? Flooding? Litter?

The quickest and easiest way to report parish problems is via the **FixMyStreet** app.

Downloadable to Android or iPhone devices, you can create an account and then track the progress of the issue

The screenshot shows the FixMyStreet website interface. At the top left is the '20 YEARS of mySociety' logo and the FixMyStreet logo. Navigation links include 'Report a problem', 'Sign in', 'All reports', 'Local alerts', and 'Help'. The main heading is 'Report, view, or discuss local problems' with a subtext '(like graffiti, fly tipping, broken paving slabs, or street lighting)'. Below this is a form to 'Enter a nearby UK postcode, or street name and area:' with an example 'e.g. 'B2 4QA' or 'Tib St, Manchester''. A 'Go' button and a 'Use my current location' button are present. The page is divided into two columns: 'How to report a problem' and 'Recently reported problems'. The 'How to report a problem' section has four numbered steps: 1. Enter a nearby UK postcode, or street name and area; 2. Locate the problem on a map of the area; 3. Enter details of the problem; 4. We send it to the council on your behalf. The 'Recently reported problems' section lists several issues with their timestamps and includes small images of the problems: 'Drain cover' (18:32 today), 'Very large and deep pothole near the bus stop going toward the shell garage' (18:31 today, last updated 18:31 today), 'Large dip / broken section between road and pavement' (18:29 today, last updated 18:38 today), 'Leek Road, Mossley' (18:28 today, last updated 18:28 today), and 'Abandoned Vauxhall Corsa' (18:28 today). At the bottom, statistics are shown: 19,986 reports in past week, 25,891 fixed in past month, and 6,658,394 updates on reports.

**20 YEARS of mySociety** **FixMyStreet** [Report a problem](#) [Sign in](#) [All reports](#) [Local alerts](#) [Help](#)

## Report, view, or discuss local problems

(like graffiti, fly tipping, broken paving slabs, or street lighting)

Enter a nearby UK postcode, or street name and area:  
e.g. 'B2 4QA' or 'Tib St, Manchester'

### How to report a problem

- 1 Enter a nearby UK postcode, or street name and area
- 2 Locate the problem on a map of the area
- 3 Enter details of the problem
- 4 We send it to the council on your behalf

**19,986** **25,891** **6,658,394**

reports in past week

fixed in past month

updates on reports

### Recently reported problems

Drain cover

18:32 today

Very large and deep pothole near the bus stop going toward the shell garage

18:31 today, last updated 18:31 today

Large dip / broken section between road and pavement

18:29 today, last updated 18:38 today

Leek Road, Mossley

18:28 today, last updated 18:28 today

Abandoned Vauxhall Corsa

18:28 today



## Message from St Andrew's



We are moving towards the end of the Lent season, which began last month with Ash Wednesday on 22nd February and runs through to Good Friday on 7th April. For many in the church this is a time for personal reflection, fasting from food and festivities, and praying in the pattern of Jesus' 40 days in the wilderness. Lent is also a time for growth in faith and for challenging ourselves in new ways. As we come to Holy Week, our focus in the church is on commemoration of the suffering of Jesus Christ for the sake of the world, beginning on Palm Sunday on 2nd April and culminating with the Easter Sunday celebration on 9th April. We share in Christ's journey beyond the wilderness. We move from his triumphal entry into Jerusalem and on to his crucifixion and to the empty tomb on Easter morning signifying his resurrection.

This is the most important day of celebration in the Christian calendar. Jesus' resurrection is the foundation of our Christian faith. On the first Good Friday, Jesus was crucified as the bearer of sin for the world. And on Easter Sunday he rose in triumph over death and the power of sin. Jesus overcame not only physical death but also the death that comes from being separated from God by sin. His victory for all time is not just his own. It is one that was available to all who believe and receive for themselves the gift that he offers. The scripture says in John 3.16 that 'God so loved the world that he gave his only Son, so that everyone who believes in him may not perish but may have eternal life'. By his death and resurrection Jesus Christ ensured salvation for all who believe in him.

Easter is a celebration of this precious gift given by God, of reconciliation and new life. You are most welcome to join us on Easter Sunday as we mark this most significant celebration, to the glory of God.

*God bless, Revd Nick Mwandia*

\*\*\*\*\*



Little Stars starts at 10.30am each Wednesday. Sessions will be held on 19th & 26th April (no sessions on 5th & 12th due to school Easter holidays). Kettle goes on at 10am – turn up whenever suits your little one's routine.



## St. Andrew's Church - Dates for April



We are pleased to confirm that the church building continues to be open! Most aspects are back to normal but we continue to designate an area at the back of church for those wishing to socially distance, and there are Covid security measures around the sharing of bread and wine at Communion services.

However if you would prefer to join the live service virtually, Nick has set up a Zoom link which is open to all. You can join by putting in the number 878 5926 2657 and the passcode 664663 to Zoom

### **Services held at St Andrew's:**

April 2nd 10.30am: Informal Communion – Palm Sunday

April 3rd 7.30pm: Monday of Holy Week - Short evening prayer led by network groups

April 4th 7.30pm: Tuesday of Holy Week - Short evening prayer led by network groups

April 5th 7.30pm: Wednesday of Holy Week - Short evening prayer led by network groups

April 6th 7.00pm: Maundy Thursday - Agape meal and communion

April 7th Good Friday - There is no service at St Andrew's. We will be joining the CTC Walk of Witness which is expected to start from Aley Green Chapel at 10 am

April 9th 11am: Holy Communion - Easter Day

April 16th 10.30am: Morning Praise

April 23rd There is no service at St Andrew's, instead there is a combined service at St Paul's, Luton starting at 10 am where Bishop Richard will be presiding and preaching.

April 30th 10.30am: Short Family Service - The Gate & Good Shepherd followed by APCM

We are continuing with a monthly Family Service on the last Sunday of each month. Of course all ages are welcome to every service, but the service content will be especially accessible to all generations at the Family Service.

## Trampled Garden!

A herd of ten horses were the unwelcome visitors to my garden. As well as visiting the garden they destroyed many, many hours of work.

The herd broke in through a fence — destroying it in the process — and spent an untold number of hours trampling their way over plants, breaking pots and turning lawns into piles of mud.

They were discovered when my wife woke up and thought she was dreaming. Sadly the dream became a nightmare of reality.

They trampled and killed 19 roses, many perennials and emerging annual bulbs. They also turned my garden into a paddock, ruining many hours and days of work.

*Bob Graham Mancroft Road, Aley Green*



*(before and after pictures)*



# SNIP ENDERS

Hair Salon Now Open  
Summer Street  
Slip End

For a free consultation or  
to arrange an appointment

Contact Rachel on  
07817315259

## HIGH ELMS

Tree Surgery Ltd

01582 840144  
07939 623675

[www.highelmstreesurgery.co.uk](http://www.highelmstreesurgery.co.uk)  
Email: [info@highelmstreesurgery.co.uk](mailto:info@highelmstreesurgery.co.uk)

- NPTC CERTIFIED
- POLLARDING
- RESHAPING
- STUMP REMOVAL
- HEDGES TRIMMED, SHAPED & REMOVED
- DEAD WOODING
- REDUCTIONS
- CROWN LIFTING
- LOGS DELIVERED
- TREE REMOVAL
- T.P.O. & PLANNING APPLICATIONS
- TREE SURVEY INSPECTIONS & REPORTS

FREE Estimates & Advice  
Fully Insured to £10 million & Approved by Local Authorities

Herts, Beds, Bucks & London + we will beat any written quotation

Registered in England No. 5005470  
VAT Reg. No. 847 4261 52

## LAIRD MATT DESIGNS

[WWW.LAIRDMATTDIGNS.CO.UK](http://WWW.LAIRDMATTDIGNS.CO.UK)

- GRAPHIC DESIGN
- WEB DESIGN
- BUSINESS STATIONERY

@LAIRDMATTDIGNS  
 @LAIRDMATTDIGNS

## Stoten Gillam

chartered accountants  
chartered tax advisers

99 High Street South  
Dunstable  
LU6 3SF  
Tel: (01582) 608601  
[www.stotengillam.co.uk](http://www.stotengillam.co.uk)

"Practical Solutions for Growing Businesses"

# AJB CONTRACTS

If you are looking for a local, reliable and trustworthy company, then please get in contact to discuss your project.

- Kitchens - design, supply & fit
- Bathrooms
- Carpentry
- House Refurbishment
- Building Works
- Garage Conversions
- Public Liability Insurance
- Over 35 years experience

 Find us on facebook



Alan Barton  
M: 07802 294144 T: 01582 699324  
E: alanbarton1@sky.com



## **YOUR LOCAL GARAGE IN SLIP END**

C&C MOTORS IS A LOCAL MECHANIC THAT WORKS AROUND YOU

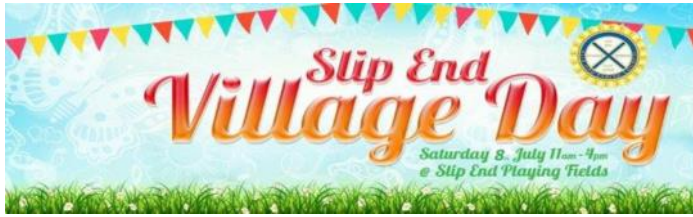
WE OFFER A FULL RANGE OF SERVICES INCLUDING REPAIRS, SERVICING AND DIAGNOSTICS

MOBILE SERVICE ALSO AVAILABLE  
FREE PICK UP AND DROP OFF SERVICE

NEWLANDS FARM  
NEWLANDS ROAD  
SLIP END

01582 730 237  
OR  
07966 253 184

[WWW.CANDCMOTORS.ORG](http://WWW.CANDCMOTORS.ORG)



### Save the Date – Saturday 8<sup>th</sup> July

We are pleased to let you know that plans for Village Day are progressing well. This year's date is Saturday 8<sup>th</sup> July from 11am to 4pm at the Playing Fields.

We have our usual bbq and bar and the Photography Club will be providing teas, coffees and cakes in the hall along with a display of some of their photographs. We have already booked some great stalls and entertainment for the day including Teaching Talons, Bouncy Castles and the Zorb Balls. More information to come in future magazines.

If you or your group would be interested in reserving a stall please contact us via our email [slipendvillageday@yahoo.com](mailto:slipendvillageday@yahoo.com) or call or text one us 07810 002942 ( Tracey) or 07958 587595(Jill)

## Anyone for Tennis????



Slip End Tennis Club was formed in 1987 and is affiliated to the Beds Lawn Tennis Association. The Club has two hard courts, with floodlights at Slip End Playing Fields, Church Road, Slip End. The courts have recently been refurbished and repainted.

It is a small friendly club with approx. 80 members. Current costs for new members are: Junior £15 (Up to age 16) Adult £30 and Family £50.

Club members have priority in the use of courts, except when either matches are to be played or coaching taking place.

Club night is on Wednesday evenings from 7pm, and Sunday mornings from 10.0am, to which all members are welcome. Coaching is provided by our LTA coach, Sally Parry. Seniors Tuesday lunchtime 12.0 – 1.0pm and evening 6.30-7.30pm. Juniors on Fridays, 5-6pm Members £5 and Non Members £6 per session. Ladies and private coaching is also available. Give Sally a call (07979 433688)

Any enquiries about the club can be made by telephone or e-mail to:

Peter Smith, Chairman (01582 733253) peter.smith813g@gmail.com

Steve Lyons, Secretary (01582 414162) stevesuelyons@aol.com

## Chiroprapist

State Registered

**Home visits Evening &  
Weekend appointments**

Keith Appleby BSc (Hons), MChS, SRCh

**Telephone: 01582 873136**

**A. McClelland  
Pest Control**



For fast response call  
Mobile 0777 494 8415  
or office 01582 872158

email: amcclellandpestcontrol33@gmail.com

*Charisma*

## **Hair & Beauty Salon**

**Ladies &  
Gentlemen  
01582 722801**



### **Opening Times**

Mon: Closed  
Tues: 9-5  
Wed: 9-1  
Thurs: 9-7  
Fri: 9-6  
Sat: 8-3

Easy Parking!

43B Elm Avenue, Caddington

[www.charisma-caddington.com](http://www.charisma-caddington.com)




Find us on facebook



**Need a reliable  
Window &  
Carpet Cleaner?**

*We operate in the  
Slip End area  
For free quotation  
contact us on  
01462 629302  
07970 406 926*

## **Mobile Spray Tanning**

sienna 

Start to enjoy the warmer weather by baring some skin with a Sunless, Safe, Natural looking Glow, 'Sienna X' Spray Tan.

**Fully insured, mobile therapist.**

Home and evening appointments available.

Starting from £25.

For more information, please contact Ella on;

**07595 509211**

**To advertise here  
Contact**

**Jo Moss 01582484373**

**or**

**Parishadverts@gmail.com**

## **CaSeBUG**

CaSeBuG (the Caddington and Slip End Bus Users Group) are a non-profit Group formed to represent Bus Users in Caddington and Slip End. As you are probably aware, CentreBus recently terminated the 231 bus service and the CaSE Trust replaced it with an upgraded 230 service. CaSeBuG is aware if the 230 is not well used then there is a chance the CaSE Trust may withdraw funding leaving both villages with a very limited Bus Service, which would be a real problem for some of the most disadvantaged residents in our communities. Amongst other things, CaSeBuG is trying actively to promote 230 bus use.

For information contact :- [info@casebug.org](mailto:info@casebug.org)





## Pet Sitting Dog Walking Drop-In Checks Food & Supplies

**Fully Insured Pet First Aid Trained 15+ Years' Experience NARPS Registered  
Dedicated Carers Veterinary Care Skills DBS Checked Multiple Species Care**

**Pet Care That Comes To You** Providing a professional dog walking and pet sitting service. Based in Slip End, also covering, Caddington, Markyate, Flamstead, Kensworth, Harpenden and the surrounding areas.



# LIV for PETS

*Dog Walking and Pet Sitting Services*

**Contact Olivia  
07767 473203**

**Olivia@livforpets.co.uk  
www.livforpets.co.uk**



## NEVILLE FUNERALS

We believe good value and excellent service go hand in hand.  
**NEVILLE. Because there is a difference.**

### LUTON

Neville House, Marsh Road, Leagrave LU3 2RZ

t: 01582 490005

e: [luton@nevillefuneralservice.com](mailto:luton@nevillefuneralservice.com)

[www.nevillefuneralservice.com](http://www.nevillefuneralservice.com)



## Gardening Notes *by Russell Sprout*

Well it hasn't been too bad a winter, at the time of writing we have just had a sharp reminder that winter isn't over yet, but on the whole I think we have been quite lucky. I wonder what the summer will bring this year, hopefully not as scorching as last year!

Complete pruning of roses as soon as possible and apply fertilizer at approximately a handful to the square yard, but leave a six inch circle around the actual plant itself, and hoe into the surface. After a good downpour mulch around the plants with a one inch layer of manure or bark chippings to hold moisture. There is still time to repair impoverished lawns this month, a light mowing followed by scarifying and then aerate to improve drainage. Over-seed any bad areas and rake in well, apply a spring fertiliser and level any bumps or hollows. Re-plant any alpine which lack vigour, or which have been lifted slightly out of the ground. Dig the ground and apply a general fertilizer after lifting these plants.

Rhododendrons and azaleas can be transplanted if they need moving or complete planting of any new bushes (water newly planted bushes if weather is dry). Remove dead heads of early flowering varieties. Dahlias started in boxes can be divided with a sharp knife, making sure that cutting has a bud or shoot on it. Many border annuals can be sown directly into the soil this month to provide a good display of colour and help to suppress weeds. Carry on planting gladioli for a succession of flowers. Carnations and pinks will benefit from an application of fertilizer to established plants, border plants should be planted by the middle of the month, tall growing varieties can be staked with twiggy sticks pushed into the soil so that the stems can grow up through them. Sweet peas sown in the spring can be planted out as soon as they are growing strongly. Divide any large clumps of herbaceous plants that are unsightly and replant the outer strongest shoots discarding the middle weaker ones.

Mulch beds and borders when they have warmed up, after destroying weeds with a hoe and making sure ground is moist. Ensure tender plants are protected from frost. Keep an eye on fruit trees and bushes as they start to blossom and take action against pests and diseases. Tomato plants can be planted in a cool greenhouse now and sow seeds indoors for outdoor tomatoes to plant out when danger of frosts has passed. Sow melons and cucumbers in a propagator, prick out as soon as they are large enough to handle.

Plant onion sets in shallow drills and just cover the tops to stop birds pulling them out. Salad crops can be sown as soon as the soil is dry enough to work into a fine tilth but sow little and often, every 2-3 weeks so that you get

a continuous supply of crops such as lettuce, radish, spring onion and beetroot and harvest as soon as they are large enough to eat, don't wait to get large woody ones. Carrots can be planted this month, main crop can be sown the middle of next month, sow seeds of late summer cauliflowers and wrinkled seeded varieties of peas which will be ready for picking in approximately 12 weeks. Sow winter cabbages for planting out in June and set out summer cabbages sown last month.

As early potatoes start to shoot from the middle of the month protect the leaves from frost either by drawing the soil over them or cover them with straw or newspaper.

By now bedding plants will have appeared in the shops, supermarkets and garden centres, if you are tempted to buy early, don't forget that we can have frosts up to the end of May, so don't be too eager to plant out or you may regret it.

*Russell Sprout*

**Luton Hoo Estate**

**The Walled Garden**

**SPRING OPEN DAY**

FUN WITH ARTS AND CRAFTS

PLANT A BULB

HUNT THE BUNNIES

FRESH AIR AND FUN

**12th April 2023**  
**10.30 - 1**

**LUTONHOOESTATE.CO.UK/EVENTS**

**ADULTS £5 CHILDREN £3**  
**UNDER 2'S FREE**

01582-721443 office@lutonhooestate.co.uk

LUTON HOO ESTATE LU1 4LF - NO ACCESS VIA THE HOTEL

PRE-BOOKING NOT REQUIRED

### Luton Hoo

Bluebell Walks on April 5th, 12th, 19th and 26th. We cannot guarantee that the bluebells will actually be out but we hope so! About 1.5 hours across estate land, which is not normally open to the public, the walk will return along the majestic lime tree avenue. Pre-booking essential via the website [lutonhooestate.co.uk/events](http://lutonhooestate.co.uk/events) or 01582 721443.

Talks on Fridays have been as popular as ever. And the last one this series is on April 28th "Gertrude Jekyll in Bedfordshire". It will take place in the lecture room at the Estate Office. Price includes tea/coffee and biscuits. Cost £7.50 each and all money goes towards the revival of the Walled Garden 10.30am - 12.30 (Talks start at 11am) Book your place at [lutonhooestate.co.uk/events](http://lutonhooestate.co.uk/events) or: 01582-721443

A warm welcome always awaits members and their families at...

# Slip End

## SOCIAL CLUB

Be social, make it your local!

**BIG SCREEN  
LIVE SPORTS**  
sky SPORTS BT Sport

**DARTS**  
**FREE POOL**  
Monday to Friday only

**DOMINOES**  
**CRIBBAGE**

☺ **HAPPY HOUR** ☺  
Monday to Friday 4-7pm

**BINGO WEDNESDAYS**

**LIVE ENTERTAINMENT  
EVERY MONTH**  
**GOLF SOCIETY**  
**FREE WI-FI**  
**USUAL CLUB PRICES**

**OPENING TIMES**  
Weekdays: 4pm to 11pm  
Saturday:  
12 Noon to 12 Midnight  
Sunday: 12 Noon to 11pm



TOP BAR



BIG SCREEN SPORT



SNUG BAR



DARTS IN ALL BARS



TOP BAR POOL TABLE



## Why practice self-defence?

Shinrai Martial Arts teaches Jujitsu and kickboxing giving you two Martial Arts styles in one club. These are just some of the benefits to people of all ages.

- Promotes physical fitness, strength and flexibility
- Builds confidence and awareness
- Learn potentially lifesaving skills
- Strong social aspect where many friendships can be made
- Discipline
- Lose weight
- Fun

Children (ages 6 – 15)

Women only (16+)

Monday 6.15pm – 7.15pm

Monday 7.30pm – 8.30pm

**First Class Free**

**Location:**  
Find us at the brand new Lyons Community Centre in Caddington Woods,  
33A Mallard Crescent,  
Caddington,  
Luton.

To book or for further information please email Sensei Teasha Mitchell  
teasha@shinraimartialarts.com

Find out all about us at [www.shinraimartialarts.com](http://www.shinraimartialarts.com)

Shinrai Facebook Page: Shinrai Martial Arts

TEASHA MITCHELL

2ND DAN BLACKBELT JUJITSU

1ST DAN BLACKBELT KICK BOXING

DBS CHECKED

NATIONAL BLACKBELT REGISTERED

MEMBER OF BRITISH MARTIAL ARTS AND BOXING ASSOCIATION



# CRIME REPORT



Parish Crime Statistics

February 2023



Aley Green	Total - 6
None	Woodside
Pepperstock	None
Assault without injury – 1	Caddington
Total -1	Public fear alarm or distress – 5
Slip End	Other theft – 1
Theft from a motor vehicle – 2	Assault without injury – 1
Attempt burglary - business and community – 1	Blackmail – 1
Public fear alarm or distress – 1	Criminal damage to a vehicle – 1
Burglary – business and community – 1	Malicious communications – 1
Burglary – residential – 1	Total - 10

CRIME SCENE DO NOT CROSS CRIME SCENE DO NOT CROSS CRIME SCENE DO NOT CROSS CRIM

## Useful information on the website of the Police & Crime Commissioner

OPCC Newsletters: <https://www.bedfordshire.pcc.police.uk/newsletters/>

Independent Custody Visiting Scheme info: <https://www.bedfordshire.pcc.police.uk/independent-custody-visiting/>

Stop and Search/Use of Force Community Scrutiny Panel info: <https://www.bedfordshire.pcc.police.uk/stop-and-search/>

Bridgebury House, Bedfordshire Police Headquarters, Woburn Road, Kempston, Bedford, MK43 9AX

Web: [www.bedfordshire.pcc.police.uk](http://www.bedfordshire.pcc.police.uk)

Tel: 01234 842064



## Caddington W. I



As well as the reports appearing in this magazine, there is now a new Caddington Villager magazine for the whole of Caddington Parish and our reports will also appear there.

Our meeting for March was an in-house craft evening. Carol Hardy provided us with string, a metal ring, and our fingers! Carol demonstrated Macrame and we were to create a key ring. Right over left, left under right, a tug, and there you go. Bearing in mind it should twist as we do the knots. Then the giggles and laughter began. We could not get it started. Carol came round to us to help. Right over left, left over right, a small tug, and there you go! Some made their key ring and they looked lovely. Unfortunately, the remainder sat in bewilderment at what they had created (me included!) I must thank Carol for being very patient with us and we had a very enjoyable evening.

We had a very quick Annual Meeting with the existing committee sitting again for the following year. If you feel you can help us we would appreciate your help.

Our Competition was a homemade item. Lovely work was brought in. Nicky Moore was the winner with Kay Storey second and Kay Palfrey third. We hadn't realised we had so many talented ladies. Well done.

In April our Meeting will be a talk on Whipsnade Zoo which will be interesting as it is so local to us. The Competition will be an Animal made from a Vegetable. This should bring some strange inventions from us all,

St. Georges Day is a big event in the Village and we have been asked to provide teas, coffee, etc, and refreshments including the ever-demanding Bacon Sandwiches which you all enjoyed so much last year. So note your diaries for Sunday 23rd April at Heathfield Community Centre.

We have Lace Making for the evening in May and the Competition is to bring an item that has lace on it. Another interesting challenge!

We shall be toasting the new King with a Bucks Fizz. and wear red, white and blue.

The committee is arranging a trip out to Bletchley Park, which is a very interesting site to visit.

If you would like to join this friendly group of ladies, we meet on the first Tuesday of the month at 7.30 pm at The Caddington Sports and Social Club. Look forward to seeing you.

Linda Edwards



# INKERMAN

**BUILDING & ROOFING Co.**

**EXTENSIONS - CONVERSIONS - RENOVATIONS**

- ✓ Restoration ✓ New Build
- ✓ Flat & Pitched Roofing
- ✓ All General Building Work
- ✓ Painting & Decorating
- ✓ Electrical Works & Plumbing
- ✓ Brickwork Contractors
- ✓ Patios & Driveways ✓ Fencing
- ✓ Groundworks/Drainage
- ✓ Insurance Work
- ✓ Garage Conversions
- ✓ Public Liability Insurance

**EXTENSIONS • CONVERSIONS • RENOVATIONS**

[www.inkermanbuilding.co.uk](http://www.inkermanbuilding.co.uk)

**The Complete Design  
Plan-Completion Service Included**



**Tel: 01727 835702 or Mobile: 07774 955255**

**Tel/Fax: 01582 876509**

Email: [info@inkermanbuilding.co.uk](mailto:info@inkermanbuilding.co.uk) • 46 Church Road, Slip End, Bedfordshire LU1 4BJ



Local Independent Locksmith

Call Steve—

**01582 318307 / 07580 716415**

- FREE Lock / Security Review
- Lock Fitting / Upgrades
- Entry using Non-Destructive methods
- Competitive Pricing
- Police Vetted



SJ Locks

[www.SJLocks.co.uk](http://www.SJLocks.co.uk)



@SJLocks





**ST GEORGE'S FUN DAY**  
**Sunday 23<sup>rd</sup> April 2023**

11am to 4pm  
Heathfield Centre  
Caddington

**CELEBRATE ENGLAND'S PATRON SAINT'S DAY**

Lots of stalls, & entertainments, face painting, classic motorbikes, Pepperstock Archers, bouncy castle tombola, games, & lots more.

We hope a fire engine, and police car will call in.

Delicious food served all day, including a hog roast.

**THERE WILL BE SOMETHING FOR THE WHOLE FAMILY TO ENJOY.**

**FREE ENTRY**  
**THIS EVENT IS A FUNDRAISER**  
**FOR RIDING FOR THE DISABLED**



*Diary - If you would like your events included, please contact the Editor*

## What's going on in 2023

<b>Weekly</b>	Soup and a Sandwich—Rising Sun Tues 12:00 <i>continuing at present</i>
<b>Weekly</b>	Chatty Club every Wednesday 2pm—4pm Rising Sun
<b>April</b>	
<b>Mon 3rd</b>	Parish Council Meeting Village Hall 7pm
<b>Mon 3rd</b>	Community Policing Engagement 11am Village Hall
<b>Tues 4th</b>	Cakes and Company & Little Lambs 10-12 Aley Green Church
<b>Wed 5th</b>	GNS Easter Party Village Hall 2:30pm—4:30pm
<b>Fri 7th</b>	Churches Together—Walk of Witness start 10:30 at Aley Green
<b>Sun 9th</b>	Celebrate Easter Sunday - Services at our Churches
<b>Sun 23rd</b>	St George's Day Fun Day Caddington 11am—4pm
<b>Sat 29th</b>	Community Coffee Morning 10- 12 St Andrew's Church
<b>May</b>	
<b>Tues 2nd</b>	Cakes and Company & Little Lambs 10-12 Aley Green Church
<b>Thurs 5th</b>	Local Elections - Vote for your representatives!
<b>Mon 8th</b>	Parish Council Meeting Village Hall 7pm

### Future Dates

<b>Mon 19 Jun</b>	Gardening Club Guest Speaker 8pm Village Hall
<b>Sat 8 July</b>	Village Day Slip End Playing Fields 11am—4pm

### Parish News Online

For those who like to read magazines on tablet / screen, Parish News can be found online at:-

[www.slipendparishcouncil.co.uk](http://www.slipendparishcouncil.co.uk) and  
[www.slipend.co.uk](http://www.slipend.co.uk) where historical copies can also be found.

### Bin Collections— April

Orange and Green — 7th, 21st Apr, 5th May  
Black bin and Glass — 31st Mar, 14th, 28th Apr  
Food Waste bin — Every Friday



## COMMUNITY AND SERVICES

**Services:-** **Good Neighbour Scheme:** 07513 37 24 15  
**Shop at the Crossroads** 401069 Mon—Sun 7.00 to 19:30  
**Slip End Garage** Markyate Road, 456888  
**Doctor** Caddington Surgery 725673  
**Doctor** Markyate Surgery 841559  
**Schools:** **Slip End Village School** 720152 **Manshead** 679400  
**Caddington Village School** 726058 **St Mary's Catholic Primary** 602420

**Churches:-** [wayne@dngsales.co.uk](mailto:wayne@dngsales.co.uk) **FoSELS** 07810002942 (PTA)  
 or [fosels@outlook.com](mailto:fosels@outlook.com)  
**St Andrew's Church**  
**Rev Nick Mwandia**  
 01582 253537  
 07398663729  
[revstandreww@gmail.com](mailto:revstandreww@gmail.com)  
**Julie Taylor (Reader)**  
 01582 413912  
 Mob 07841482119  
[duncan.taylor@btinternet.com](mailto:duncan.taylor@btinternet.com)  
**Wardens:**  
**Steve Baird** 738205  
**Susan Wiltshire** 727000  
**Pepperstock Archers**  
 615216  
 Email [LBP121@aol.com](mailto:LBP121@aol.com)  
 (Lee Prebble)  
**Tennis** 733253  
**Runners** Peter Barber  
 07587 89260.  
**Slip End Veterans Football**  
 Wayne Leslie (see football)  
**Line Dancing** —Jean  
 Anderson 01582 2603030  
**Women's Institute**  
 01582 737036  
**Chatty Club** Jean Turner 01582  
 421304 or Cathy Rose 01582  
 457362  
**Book Club** (contact via  
 Parish News)  
**CaSeBuG (Caddington  
 and Slip End Bus user  
 group).** [info@casebug.org](mailto:info@casebug.org)  
 www.slipend.co.uk  
**Aley Green Methodist  
 Church.**  
**Minister:**  
**Rev Nigel Bibbings**  
**Senior Steward:**  
**Ann Meader** 733668  
**Community:-**  
**Gardening Club** 423622  
**Brownies** 723109  
**Beavers,**  
**Cubs & Scouts** 418014  
**Sport:-**  
**Bowling Club** 412506 **Pre-School** - Hayley  
**Football** Bolton- 07889824367  
 517042 or 07515687160  
  
[Slipendparishcouncil.co.uk](http://Slipendparishcouncil.co.uk)

### Items for the next issue (May) to us by 15th April (Editor — Alison) Adverts by 10th please

Any delivery problems? Contact Alan Buttery at 1 Claydown Way  
 (01582 724527), [alanjan4546@gmail.com](mailto:alanjan4546@gmail.com)

Anything interesting to report about village activities, photos, holidays, etc.  
 Please contact us, letters and e-mails are encouraged.

Views expressed by our contributors are not the Editors' own.

Articles should be sent by the 15th of the preceding month to the Editors - Alison  
 Wilson, 23 Claydown Way or Matt Freeman 20 Crawley Close or e-Mail  
[parishnews@slipend.co.uk](mailto:parishnews@slipend.co.uk) Advertising queries to Jo Moss 01582484373 or  
[Parishadverts@gmail.com](mailto:Parishadverts@gmail.com)

Parish News is grateful to our advertisers for their contributions. Please support them.

## YOUR PARISH COUNCILLORS

Clerk to Parish Council — Tracey O’Neill 07487 850249 (9am to noon weekdays)  
[clerk@slipendparishcouncil.co.uk](mailto:clerk@slipendparishcouncil.co.uk)

Sarah Minnighan - <a href="mailto:s.minnighan@slipendparishcouncil.co.uk">s.minnighan@slipendparishcouncil.co.uk</a>	07868 742904 (Chairman)
Carol Beeton - <a href="mailto:c.beeton@slipendparishcouncil.co.uk">c.beeton@slipendparishcouncil.co.uk</a>	405597
Carol Brennan - <a href="mailto:c.brennan@slipendparishcouncil.co.uk">c.brennan@slipendparishcouncil.co.uk</a>	07979 402847
Trefor Hooker - <a href="mailto:t.hooker@slipendparishcouncil.co.uk">t.hooker@slipendparishcouncil.co.uk</a>	07773 159275
Simon Patterson - <a href="mailto:s.patterson@slipendparishcouncil.co.uk">s.patterson@slipendparishcouncil.co.uk</a>	07767 615714
Paul Shaw - <a href="mailto:p.shaw@slipendparishcouncil.co.uk">p.shaw@slipendparishcouncil.co.uk</a>	07957 188947

**GOOD NEIGHBOUR SCHEME (GNS) 07513 37 24 15**

## WHO DO I CALL?

**Fly Tipping (CBC)** 0300 300 8000 [Customer.Services@centralbedfordshire.gov.uk](mailto:Customer.Services@centralbedfordshire.gov.uk)

**Road issues:-** [www.centralbedfordshire.gov.uk/reportit](http://www.centralbedfordshire.gov.uk/reportit)

**Police** 101 **Aircraft noise** 395382 **Airparks** 393321

**Water leaks** 0800 3765325 **Cold Calling** 0345 4040506

**Out of hours noise** 0300 300 8098 **Street Lighting** 0300 300 804

### Your Central Beds Councillors



Cllr Kevin Collins

[kevin.collins@centralbedfordshire.gov.uk](mailto:kevin.collins@centralbedfordshire.gov.uk)



Contact  
details



Cllr Eddie Perry

[eddie.perry@centralbedfordshire.gov.uk](mailto:eddie.perry@centralbedfordshire.gov.uk)

*MP's*

*Contact details  
Rachel Hopkins*



*Her local office is located at:  
3 Union Street Luton LU1 3AN  
For advice, surgery appointments  
call 01582 457 774*

### PETER EDWARDS HALL & PLAYING FIELD

Ideal for children's & adult's parties, meetings, etc.

Kitchen facilities with catering service available

Available for various sports activities

Excellent sports changing facilities

Facilities for the Disabled

For Bookings: please contact

[PEHall@slipendparishcouncil.co.uk](mailto:PEHall@slipendparishcouncil.co.uk)

### SLIP END VILLAGE HALL

*Your Village Hall*

for Dances, Receptions & Parties  
Facilities for the disabled

*For bookings contact  
[villagehall@slipendparishcouncil.co.uk](mailto:villagehall@slipendparishcouncil.co.uk)  
or Gill Plummer on 01582 723109*

## ESTABLISHED 1939



### NEW SALES



We always have great offers available including high deposit contributions, upgrade packages, free service packs and highly competitive finance options.

To find out more about our latest offers, visit us online or call our sales department now.



### USED SALES



Here at Slip End Garages we have a fantastic choice of used cars for sale. Our stock is always changing and currently includes used Citroën, Subaru and Isuzu vehicles.

We are always updating our website with our current stock visit us online or call now.



### PARTS



Whilst being one of the largest Citroën Dealerships in the Home Counties we also have one of the largest supply of vehicle parts and accessories available.

Whatever you need, we are here to help, just give our parts department a call.



### SERVICE



We have over 73 years of Vehicle maintenance experience with a full collection and delivery service available to our customers as well as provide courtesy cars for service and MOT.

Call our service department and we will take care of all of your service requirements.

**LOCAL RESIDENTS RECEIVE A FURTHER £200 DISCOUNT ON ALL NEW AND USED VEHICLES + SPECIAL RATES ON ALL SERVICING**

## Slip End Garages 01582 456888

Markyate Road Slip End, Luton, Bedfordshire, LU1 4BU

Our Service Centre is located in Grove Road, Slip End

Email: [info@slipendgarages](mailto:info@slipendgarages)

[WWW.SLIPENDGARAGE.CO.UK](http://WWW.SLIPENDGARAGE.CO.UK)