

Parish News

June 2023

The Community Magazine for you.
With Information and News from you.

Delivered to the whole of the Parish

Aley Green

Pepperstock

Slip End

Woodside

Editors' Notes

Cover photo by Peter Motson

June arrives and we are now half way through 2023, incredible how time flies, let's hope the weather changes soon and we can get out and about in the sunshine. Well, this is Britain so we may have snow next week, I guess!

What a month May has been, three Bank Holiday weekends, a new King was crowned and I've even managed to get the Barbeque out, alas only twice so far.

As I write this Luton Town has reached the Championship Playoff final and will be heading to Wembley on Saturday 27th May. It's been a brilliant year for the Hatters and I can only hope that at time of publication they will be in the Premiership next season, fingers and toes are truly crossed.

Quite a lot going on in this month's edition of the Parish News, so much so that I have a few articles already in for next month.

The ever popular "Soup and a Sarnie" every Tuesday at the Rising Sun continues but has been rebranded "Picnic at the Pub" (very catchy title, I like it!), there's a Quiz Night at the Slip End Club on 24th June, details on page 23, also on the same day the open air cinema will be running not one but two movies. There is Roald Dahl's Matilda in the afternoon and Top Gun Maverick for the adults in the evening.

For all you keen gardeners, especially with good weather on the way (hopefully), The Gardening Club will be holding a garden party on Saturday 17th June, details on page 14 as well as Gardening Club on Monday 19th June.

There's some articles this month from the local school, please do take the time to read the article on page 26, as well as the Parish Council Annual Review.

Anyway, I'll stop waffling now, and let you read the good articles. Have a great month everyone!

Reminder:-

There is no magazine in August .

You will need to send any dates and information for August for the July issue.



Make sure that you join the fun at the Playing Field next to the church on Saturday 8th July, starting at 11 o'clock.

There will be over 20 stalls with things to buy and games to play. There is the added bonus of the ever popular wildlife animals with Teaching Talons, the miniature steam train to ride, zorb balls and bouncy castles, plus archery and inflatable football darts. The tickets for the Main Raffle will be on sale at the club and pubs in the weeks leading up to the event as well as on the day.

The BBQ chefs will be cooking up the usual favourites , plus the Bar will provide the necessary to quench your thirst. The hall will be open for teas, coffee and cakes and the church too, for if you need a quiet moment and a cuppa.

In the arena we have a dog agility display, plus martial arts, Platinum Wellness and Slip End School choir. Then to round off the day we have a special race by the Slip End Mascots ! Keep your eyes peeled for more information

It is important to note that a lot of the stalls and entertainment will be cash only so please make sure you have cash with you. We will be able to take card payments on the BBQ and Bar this year.

Looking forward to seeing everyone on the 8th July

The family of **John Carrington** of Markyate Road, Slip End are sad to announce his passing on 22 April 2023. John lived in Woodside / Slip End for nearly 60 years, having been born in Leagrave and then serving in the Royal Navy.

A service will be held at Stopsley Crematorium at 11am on Monday 19th June.



Slip End Village Day

Saturday 8th July 11am-4pm

Slip End Playing Fields
(Next to the St. Andrews Church) TUI 4BJ

SHINRAI MARTIAL ARTS
信頼
INSPIRING CONFIDENCE

Disabled Parking Only

Bar • BBQ • Ice Cream • Inflatable Football Darts • Land Zorb Balls
Dog Agility Display • Inflatables inc. • Teaching Talons
Bubble Bus • Pepperstock Archers • Miniature Train Rides
Many Varied Stalls & Games • Raffle *Most Stalls Cash Only*



Slip End
VILLAGE SCHOOL



FoSELS

Registered charity number: 1027097



Saturday
24th June

PRESENTS AN

OPEN AIR CINEMA

ROALD DAHL'S

Matilda @ 1pm

THE MUSICAL

TOP GUN
MAVERICK @ 6pm

ENTRY 1 1/2
HOURS
BEFORE
EACH FILM



£7
CHILD • **£12**
ADULT
PER FILM
TICKETS ONLY

Bar, BBQ, Popcorn, Candy Floss, Slushy's, Games & More.
Bring your own Chairs/Blankets.

For bookings made outside school, contact Paula 07940 203123 or fosels@outlook.com

No refunds. Event will go ahead regardless of weather.



Slip End Parish Council Annual Chairmans Report 2022 - 2023

Grant Applications for Community Groups

At our meeting in April 2022, the parish council considered grant applications received from local community groups. The following grants were issued:

Parish News – was considered an important way to communicate to residents in the parish monthly.

Good Neighbourhood Scheme – an excellent scheme to help vulnerable adults in the parish. The grant was to be used to fund volunteers on vital training and to support the scheme.

Slip End Playing Fields – a grant was applied for match funding to replace the halls septic tank pit.

FoSELS – applied for match funding for much needed laptops for their pupils.

Slip End Pre School – applied for funding to improve the outside play area which needed improving.

Slip End Carpet Bowls – to support the club for continued use for parish residents.

Crawley Playground and Youth Shelter

The playground continues to be well used. A full safety check of the playground equipment is carried out twice a week so any required remedial work can be identified quickly. Edwin Thrift of Lansdowne Services Ltd started a three year contract with the parish council which included maintenance of the playground. Edwin attended a ROSPA safety course to be compliant with the requirements of checking the playground and reports to the chair or clerk if any issues are found. Costs to replace parts have been a bit of a surprise, but the council has always replaced when required to ensure the safety of our residents and playground users.

Sadly, it is now a regular requirement for Edwin to clear up broken glass and rubbish from the playground, particularly around the youth shelter – shame as there is a bin within a few feet of the shelter. If you use the shelter, put your rubbish in the bin please – have some respect for the area and other users.

London Luton Airport

The parish council sent a response to the Airport Expansion Consultation and objected to the expansion. As a consultee for the residents of the parish, a comprehensive response document courtesy of Cllr Shaw was submitted stating the reasons for objection and Cllr Shaw continues to keep members abreast of any new documents, changes or news in relation to this matter. Thank you for your work on this Paul.

Hanging Baskets

Hanging flower baskets were sited throughout the Parish over the summer of 2022. Councillors all agree that the hanging baskets are a great addition to the appearance of the parish. The contractor who supplies the baskets now covers the watering requirements. Over the coming years the lamp posts will be replaced with hinged ones which will no longer support the baskets, so members are aware we may have to resort to troughs only, but members are keen to maintain the flower arrangements in some form for as long as possible.

Fly Tipping

Fly Tipping continues to plague our roads. Contents of various cannabis farms and other rubbish is regularly dumped in the locations of Woodside Road and Half Moon Lane Hyde, these two being the worst affected. The CBC waste grab lorry visits these sites on a weekly basis to remove the rubbish. We have continued to push Central Bedfordshire Council to install covert cameras at hot spot areas with the hope this will lead to the prosecution of offenders, but as recent as February members were advised the locations 'aren't suitable'.

Tree Maintenance at St Andrews Church

St Andrews church approached the council detailing several trees that needed to be felled. The parish council arranged for the work to be completed and this has been carried out over three phases. Phase, one and two were completed in this year and phase three is being looked at from May 2023.

Newlands Park Development

The parish council arranged a meeting with the developers of the Newlands Business Park (Wrenbridge Land) in July 2022. This provided an opportunity to ask questions prior to a formal planning application being submitted. There are concerns about the development having an impact on local roads.

Councillor Collins attended a development meeting at Luton Borough Council where the development was discussed. The meeting acknowledged the traffic concerns, but despite this the planning application for the northern site was approved. It was agreed that traffic would not be able to use the site to cut through from Newlands to Luton. There will be two road accesses not joined together.

Highways and Footpaths

Over the summer period a speed survey was carried out in Summer Street. It was identified that over 99% of vehicles travelled below the speed limit. Residents reported that a few cars regularly sped along Summer Street and were encouraged to record number plates to be passed to the Police. Due to the inclement weather a number of potholes have emerged throughout the parish. These were reported and have and continue to be addressed.

Electric Charging Points

The council welcomed a representative from the sustainable travel team of Central Beds Council to discuss plans to install electric charge points in the village hall car park. These would be installed and maintained by CBC's partner BP Pulse. There is a proposal for eight charging points which would be slower charging and ideal for overnight charging. Discussions are ongoing.

Good Neighbourhood Scheme

The GNS has been extremely successful this past year supporting residents in the parish. They have held tea parties and a Christmas party in the parish hall and raised £400 through a tombola stall at the Village Day. In the winter of 2022, a weekly Soup and Sarnie event started at the Rising Sun where residents could receive hot food and tea or coffee for a small cost. This has been well attended, with a quiz some weeks to entertain, and currently is continuing into the summer. They've had a trip to the Leighton Buzzard railway taking advantage of a hired minibus from another neighbour scheme, and first aid and manual handling courses were organised for GNS volunteers to attend. 232 parish residents received a box of biscuits for Christmas.

CASEBUG

The parish council met with CASEBUG, a local group which arose from the 231-bus service being cut in the New Year. The 230-bus service is also being reviewed and has been proposed to change it to an hourly service on a one-way loop. It will remain a free service by residents paid for by the Caddington Woods development. As residents are not happy with the loss of the service and the disruption it has caused to residents in Caddington and Slip End, so CASEBUG have been campaigning to find a better service for residents. As a result of the 230 being cut Peeperstock residents are less well connected. Members agreed to offer their support to CaseBUG alongside Caddington Parish Council to ensure that residents that rely on the bus service can be supported and have a voice.

Flooding

Flooding in Mancroft Road, Lower Woodside and Grove Road remain major concerns. Councillor Collins is aware of these locations and meets or talks regularly with a Central Beds Council Highways custodian to discuss ongoing options. This will be a regular agenda item for this year.

Policing

We have a PCSO back with us, Laura Tuck. It's been nice to have police support again, and certainly issues that have been raised with Laura have been dealt with or investigated. The crime statistics have shown that fortunately our parish still has a low level of crime reported.

Recruitment of a New Clerk

Peter Segal, Clerk to the parish council for 13 years retired in March 2023 and our new Clerk Tracey O'Neill was appointed. I would like to thank Peter for his continuous support over the last 13 years and again wish him an enjoyable retirement.

The budget was maintained this year and we would like to thank the Clerk and Cllr Brennan for keeping us on track. I would also like to thank the Ward Councillors Kevin Collins and Eddie Perry for their support over the past year and wish Eddie all the best in his retirement as we welcome his replacement, Councillor Vicky Malone.

Our previous chairman, Paul Cooper, resigned in February 2023 to concentrate on new business opportunities. Members thanked him for his contribution over the last 13 years and wished him well. Likewise, Cllr Hooker decided not to stand for re-election this year, his final meeting was last month and again we thank him for his hard work and contributions to council over the last 4 years.

Finally, to my remaining fellow Councillors, thank you for your support throughout the year and ongoing, here's to the next 4 years!

Sarah Minnighan - Chairman
Slip End Parish Council
s.minnighan@slipendparishcouncil.co.uk
May 2023



Federated international trip to Boulogne, France 2023

It was still dark on the first Monday of the Easter holidays as the two coaches arrived at Caddington's Green where over ninety excited children and staff from both Caddington and Slip End Village schools were waiting to get on board.

Once all had been loaded up, and with songs aplenty, we were on our way! The weekend news had been dominated by the queues at Dover and we were anticipating a long wait. However, luck was on our side and we sailed through the port and got on to an earlier ferry crossing. We found a space to all sit down together and eat our packed lunches.



Due to the earlier arrival in Boulogne, we had time to play on the beach before going to the first place on our itinerary – Nausicaa, the largest aquarium in Europe. We were all amazed at the size of the main water tank that contained a wide range of spectacular fish and enjoyed walking through the tunnel where a giant manta ray glided above.

Afterwards we then made our way to the hostel in Boulogne (very basic but clean and well situated) and having put our bags in our rooms, we had our first meal. That evening, all the children went to sleep pretty swiftly and the staff followed suit!

The next day, most children had to be woken for breakfast and it wasn't long before we were all aboard the coaches ready for our first full day of activities. A trip to France is incomplete without a trip to a boulangerie and so we visited a bakery where we were shown how bread is made and had a go at kneading and making our own shapes from the dough. Then the baker himself quizzed us in French which was both terrifying and exciting but the staff were super impressed with the children's language skills, not so much with the croissant making skills – it was very tricky!



During WW2, the Germans set up many gun emplacements along this coastline and we visited a museum where one of these was once situated. It was fascinating to look back at the cliffs of Dover where the guns were once directed but it was reassuring to know that it happened many years ago.

We had lunch in the sunshine before making our way to the old town of Boulogne. Here, we wandered along the cobbled streets and had the opportunity to buy gifts for ourselves and family. It was a pleasant walk back to our hostel for food, downtime and much needed sleep.

The following day again began with most of the children being woken up for breakfast and we had another full day planned. We visited La Coupole, which served as the launch base for V2 bombs directed towards Southern England during WW2. Part of the site now holds a 3D planetarium where we watched an interesting film about the Solar System.

On this day we also visited a Chocolaterie where we learned about the art of chocolate making and saw it made in to all shapes and sizes. It looked and smelled delicious and reminded us of Willy Wonka's Chocolate Factory!

It was lovely to spend some more time on a beach, this time at La Touquet, which is a large beach of sweeping yellow sand where the children built sandcastles, ate sandy baguettes, made tunnels and played and played and played.



After three lovely days of sunshine, our final day was rainy as we packed up our belongings, swept up the plentiful sand, loaded up the coach and made our way home.

This Federated school trip had been valuable in so many ways. After the disruption of Covid, it was great to be able to take the children on a European adventure where they grew in independence, experienced a range of activities and spent precious time playing with their friends and making new ones.

Both schools thank all of those who supported our trip: Parents, staff, children and Heathfield Centre staff.

Slip End Preschool



Open Monday - Friday
(Term time only)

🕒 9am - 3pm daily

📍 Slip End Village Hall

Children aged 1-4 years

- ✓ Extra-curricular activities
- ✓ High staff-child ratio
- ✓ 2, 3 and 4 year funded places
- ✓ Rated **GOOD** by Ofsted
(September 2022)

For more information please contact
Hayley Bolton on **07889 824367**

Central
Bedfordshire



Mutts & Moggies



Kaz Brittain

Dip.dog psy Dip.DG (Inst. L)

07810 890290

muttsandmoggies@gmail.com

Qualified &
Experienced in Animal
Management

Mutts & Moggies have been looking after Bedfordshire, Hertfordshire and Buckinghamshire pets for the last 20 years.

We are a mobile service where we come and visit you in the comfort of your own home to care for your pets.

Some of the mobile services we offer are:

- Nail trimming
- Emptying anal glands
- Microchipping
- Cleaning and plucking ears
- Eye cleansing
- Wrinkle cream and balm
- Health checks
- Supplying food, toys and essentials
- etc...

And much more

To advertise here

Contact

Jo Moss 01582484373

or

Parishadverts@gmail.com



Aley Green Methodist Church



Dates for June 2023

Sat 3rd Jun 10am Prayer Breakfast
led by Liz Higgins

Sun 4th June 10:30am Morning
Service led by Rev Claudia Lupi
(Holy Communion) and Sunday
School

Tues 6th June 10-12am Cakes and
Company and Little Lambs Club
(Story time 10:30am)

Sun 18th Jun 10:30am Morning
Service led by Roger Owers

Sun 18th Jun 10:30am Morning
Service (local arrangement) and
Sunday School

Mon 19th Jun 7:30pm Ecumenical
Fellowship led by Jo Prowse

Sun 25th Jun 10:30am Morning
Service led by Michael Adams

Wed 28th Jun 7:30pm Coffee
Evening in aid of MHA (Methodist
Homes for the Aged)

Sat 1st Jul 10am Prayer Breakfast
led by Liz Higgins

Sun 2nd Jul 10:30am Morning
Service and Sunday School

Also, **Sun 9th July 11am** Outdoor
Circuit Service on Dunstable Downs

Please join us at Aley Green for our
morning services or for our other

events and activities. Our Sunday
school is on the first and third
Sundays and we have Communion
once a month. Little Lambs Club (for
babies & pre-school children) meets
alongside our regular community
“Cakes and Company” on the first
Tuesday from 10 to 12am. Story time
is at 10:30am. The children have the
opportunity to listen to stories from
the Bible, make crafts and have fun!

Coffee evenings are held on the last
Wednesday of each month, raising
money for different charities. At our
Coffee evening at the end of April, we
raised over £70 for the charity
“Mission Direct”. One of our members
has supported this charity for many
years, including volunteering with
them in Africa. The coffee evening on
31st May will be in aid of the charity
Christian Aid.

The District Circuit is holding its
annual outdoor worship on Dunstable
Downs on Sunday 9th July. All the
Methodist Churches in the South
Beds area are invited to take part in
this along with anyone else who
would like to attend.

We look forward to seeing you. You
will always be given a warm welcome
at our Church.

Ann Meader, Steward

The Good Neighbour Scheme
(supported by St Andrews Church)
presents

Picnic at the Pub

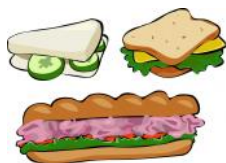
(replacing Soup & a Sarnie)
Sandwiches - Savouries - Fruit

~~~

**at The Rising Sun**  
**every Tuesday throughout June**  
**12.00pm to 2.00pm**

~~~~~

June 6th, 13th, 20th and 27th



~~~



**Everyone Welcome**  
**Occasional Entertainment**

~~~

£3 for picnic & £1 for tea or coffee
if you need a lift call 07513 372415



Slip End
VILLAGE SCHOOL



FoSELS

Registered charity number: 1027097



Saturday
24th June

PRESENTS AN

OPEN AIR CINEMA

ROALD DAHL'S

Matilda @ 1pm

THE MUSICAL

TOP GUN
MAVERICK @ 6pm

ENTRY 1 1/2
HOURS
BEFORE
EACH FILM



£7
CHILD • **£12**
ADULT
PER FILM
TICKETS ONLY

Bar, BBQ, Popcorn, Candy Floss, Slushy's, Games & More.
Bring your own Chairs/Blankets.

For bookings made outside school, contact Paula 07940 203123 or fosels@outlook.com

No refunds. Event will go ahead regardless of weather.

GARDENING CLUB

We are a small friendly Club which meets five times a year, Monday evenings 8pm at the Village Hall and would welcome new members. The annual membership is very good value at only £5 per person. Visitors and Guests are welcome at meetings at a charge of £2.

We have Guest Speakers on gardening topics at meetings and organise the Village Open Gardens Day and Plant Sale, alternate years. Any enquiries to Rosemary Wickens 01582 423622

We are holding a Garden Party 2-4pm on Saturday 17 June, see box below for details.

The annual programme of garden visits under the National Gardens Scheme is being prepared and will be available early this month.

Future garden visits are to the following:-

Sun. 4 June. Bramble Hedge, Preston nr Hitchin 12.00-5.30pm

Sun. 25 June. Woburn (11 Gardens) 10.30 – 4.00pm

Visits depart from the Village Hall Car Park at 1.30pm. (However it will be 1pm for the 25 June visit above as 4pm finish)

PN Gardening Correspondent

Garden Party



Saturday 17th June



86 Front Street



2pm - 4pm

Free Entry | Plants for Sale | Refreshments & Raffle

All Welcome



Mon 19th June
Village Hall, 8pm
Gardening Club



Guest Speaker - Keith Winter
Table Flower Arrangement/Demonstration

New Members Welcome
Guests/Visitors £2

Local agents, Local knowledge

Whether buying, selling or renting, we provide a personalised, professional and individual service to help make your move as smooth as possible. Speak to one of our friendly team today.



01582 841 200

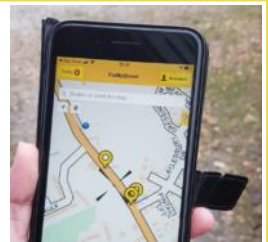
sales@towncountry.uk.net

1 Manor Road, Caddington, Bedfordshire, LU1 4EE

**Town &
Country**

Fed up with pot holes? Flooding? Litter?

The quickest and easiest way to report parish problems is via the **FixMyStreet** app. Downloadable to Android or iPhone devices, you can create an account and then track the progress of the issue.



 **FixMyStreet**

@WAYNE'S

*Professional Hairdressing
for all the family*



@WAYNE'S - Church Road, Slip End - 01582 294 248

Butterfly Funerals

INDEPENDENT FAMILY
FUNERAL DIRECTORS

To find out more or just have a discussion
on what you need to do after a bereavement

please call

01582 968130

or visit our website:

www.butterflyfuneralsltd.co.uk

**39 Elm Avenue, Caddington
Luton LU1 4HS**

Caring with Compassion

Butterfly Funerals is run by Teresa and Peter who have been in the funeral service business for over 30 years. During that time they have gained a first class reputation for professional quality combined with a caring and compassionate approach to family and friends of the departed.

Services include:

- 24 hour call out 7 days a week
- Traditional funerals
- Bespoke funerals Pre-paid funerals
- Green funerals
- Memorial consultants
- Chapel of Rest
- Home visits
- Flowers
- Custom wills

The Good Neighbour Scheme



Tea Party



Wednesday 26th July 2023

Slip End Village Hall

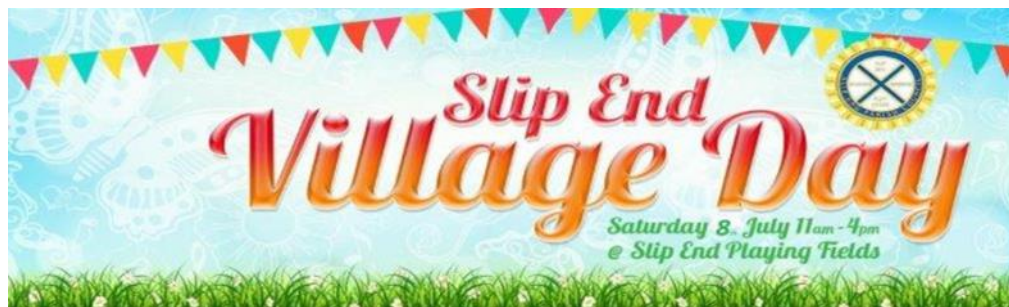
2.30pm to 4.30pm



**Bingo! Raffle!
Cakes & Refreshments**



**Transport available
on 07513 372415**



Message from St Andrew's



The artwork in the picture is named 'the Ascension to Prayer' and was designed and created by Gayle Storey, a member of the congregation. It is made up of 112 individually crafted ceramic crosses mounted on a wooden frame. It is housed in the prayer room in the church. Each cross represents an individual's prayer offered to the Father, through Jesus Christ. During the month of May, we have been engaged in the annual ecumenical prayer initiative 'Thy Kingdom Come'. We joined churches across the world between

Ascension Day and Pentecost to give focussed prayer for people to come to know and enter the kingdom of God. The theme 'Thy Kingdom Come' is drawn from the Lord's Prayer, given in Matthew 6.9-13.

The Lord's Prayer has shaped the lives of Jesus' followers ever since he first taught it to his disciples. Rooted in Jesus' relationship to the Father, the prayer encompasses the whole of life, inviting people to pray for God's presence and power to change the world and to change us. The Lord's Prayer embodies in it the way to live the Christian life. As Rev Bob Key says, here we find outlines for life-giving attitudes and actions. We also encounter a prayer that does not seek to get God's attention but draws us to give our attention to Him. The Prayer also functions as a challenge to action, to live this prayer and to discover the deeper Christian life.

The prayer is familiar, and the words may seem deceptively simple. They may trip off the tongue often without a second thought. Remembering the short lines poses little difficulty for most. Yet those lines hold within them the ability and capacity to change our lives entirely. But it doesn't feel easy. It feels like a different way of living our lives to that of the world around us. It contrasts with the drive to buy, to succeed, to consume, to dominate, no matter what the cost to others or to the earth.

I'll end with a suggestion made by Pope Francis. *Next time you choose to pray The Lord's Prayer, instead of reciting it by rote, try to remember that the words hold a meaning deeper than their surface alone ... like all true prayer, it is a declaration of mutual love between a person and God*

- Revd Nick Mwandia

St. Andrew's Church - Dates for June



We are pleased to confirm that the church building continues to be open! Most aspects are back to normal but we continue to designate an area at the back of church for those wishing to socially distance, and there are Covid security measures around the sharing of bread and wine at Communion services.

However if you would prefer to join the live service virtually, Nick has set up a Zoom link which is open to all. You can join by putting in the number 878 5926 2657 and the passcode 664663 to Zoom or by clicking the link <https://us02web.zoom.us/j/87859262657?pwd=dTdad291VDk2anA5aGtmdnFCN3kzQT09>.

Services held at St Andrew's:

June 4th 10.30am: Informal Communion – The great commission – Environment Sunday - outdoor worship, followed by bring 'n' share lunch and Count on Nature (see separate notice).

June 11th 10.30am: Morning Praise – Matthew's calling

June 18th 10.30am: Holy Communion – Sending of the twelve – Father's Day & annual Gift Day

June 25th 10.30am: Family Service – Do not be afraid

We are continuing with a monthly Family Service on the last Sunday of each month. Of course all ages are welcome to every service, but the service content will be especially accessible to all generations at the Family Service.




Little Stars



Little Stars starts at 10.30am each Wednesday. Sessions will be held on 7th, 14th, 21st & 28th June. Kettle goes on at 10am – turn up whenever suits your little one's routine.

St Andrew's Woodside Community Coffee Morning



**Saturday 24th June
10.00 am to noon
at St Andrew's Church**

**Tea, coffee, conversation and good company.
What special treats will Paula have in store this month?
Come and see.**

**Tea, coffee, conversation and good company.
Drop in at any time. All welcome.**

Contact Julie on 413912 if transport is a problem.

Planning applications submitted within the Parish since April 2023.

Application CB/23/00527/FULL submitted 20th April 2023

47 Woodside Road, Woodside. LU1 4DJ

Creation of vehicle crossover with dropped kerb, new hardstanding area to the front driveway and alterations to front boundary treatment.

Decision: Not yet decided

For further information on applications visit

www.central Bedfordshire.gov.uk>view planning applications. If you wish to comment on an application email: planning@centralbedfordshire.gov.uk

SNIP ENDERS

Hair Salon Now Open
Summer Street
Slip End

For a free consultation or
to arrange an appointment

Contact Rachel on
07817315259

HIGH ELMS

Tree Surgery Ltd

01582 840144
07939 623675

www.highelmstreesurgery.co.uk
Email: info@highelmstreesurgery.co.uk

- NPTC CERTIFIED
- POLLARDING
- RESHAPING
- STUMP REMOVAL
- HEDGES TRIMMED, SHAPED & REMOVED
- DEAD WOODING
- REDUCTIONS
- CROWN LIFTING
- LOGS DELIVERED
- TREE REMOVAL
- T.P.O. & PLANNING APPLICATIONS
- TREE SURVEY INSPECTIONS & REPORTS

FREE Estimates & Advice
Fully Insured to £10 million & Approved by Local Authorities

Herts, Beds, Bucks & London + we will beat any written quotation

Registered in England No. 5005470
VAT Reg. No. 847 4261 52

LAIRD MATT DESIGNS

WWW.LAIRDMATTDIGNS.CO.UK

- GRAPHIC DESIGN
- WEB DESIGN
- BUSINESS STATIONERY

@LAIRDMATTDIGNS
 @LAIRDMATTDIGNS

Stoten Gillam

chartered accountants
chartered tax advisers

99 High Street South
Dunstable
LU6 3SF
Tel: (01582) 608601
www.stotengillam.co.uk

"Practical Solutions for Growing Businesses"

AJB CONTRACTS

If you are looking for a local, reliable and trustworthy company, then please get in contact to discuss your project.

- Kitchens - design, supply & fit
- Bathrooms
- Carpentry
- House Refurbishment
- Building Works
- Garage Conversions
- Public Liability Insurance
- Over 35 years experience

 Find us on facebook



Alan Barton
M: 07802 294144 T: 01582 699324
E: alanbarton1@sky.com



YOUR LOCAL GARAGE IN SLIP END

C&C MOTORS IS A LOCAL MECHANIC THAT WORKS AROUND YOU

WE OFFER A FULL RANGE OF SERVICES INCLUDING REPAIRS, SERVICING AND DIAGNOSTICS

MOBILE SERVICE ALSO AVAILABLE
FREE PICK UP AND DROP OFF SERVICE

NEWLANDS FARM
NEWLANDS ROAD
SLIP END

01582 730 237
OR
07966 253 184

WWW.CANDCMOTORS.ORG

LUTON HOO WALLED GARDEN

LUTON
HOO
ESTATE

Open Wednesdays continue between 10:30-16:00, entry is £7.50 which includes a guided tour by our knowledgeable research volunteers. The Woodyard Coffee Shop is open for hot and cold snacks and there is also plenty to buy from the plant and produce stall.

There are opportunities to chat to our volunteer gardeners and conservationists while walking around the garden, visit the back sheds for a nostalgic glance at how things used to be.

An outdoor production is being held on 1st June at 19:00 – Robin Hood – please visit our website for booking details – www.lutonhooestate.co.uk.

On Sunday 11th June from 11:00-15:00 it is Open Farm Sunday – free entry to the estate – the whole day is aimed at encouraging interest in agricultural farming from the local community, bridging the gap and educating all.

Activities include a toddler straw maze, welly wanging, coconut shy, grind your own flour, handsome hound competition, Walled Garden Project stall and honey for sale.

Full details can be found on our website www.lutonhooestate.co.uk

Quiz Night

at The Slip End Social Club

Saturday 24th June 2023

Sign In at 7.30pm - Kick off 8pm

Teams of 4 - £12.00 per head

~~~~

Price includes food - choice of:

Small Chicken & Leek Pie & Chips, - Small Cod & Chips - 2 Sausages & Chips

Battered Halloumi & Small Chips

~~~~

Great Night Out! Raffle! Prize for the Winning Team!

~~~~

Promoted by the Good Neighbour Scheme

To register your interest and order your food choice please text or call  
Peter Russell on 07793 636 396 Raffle prize donations greatly appreciated



## Churches Count on Nature 2023

We are celebrating the wildlife in our churchyard by observing and recording the plants and animals we find during

Love your Burial Ground Week

We would love you to join us.

Sunday 4th June 10.30am at St Andrew's  
Church Woodside

Outdoor climate & nature themed service, followed by bring & share picnic (plastic free if possible!), followed by a nature count in the churchyard.

All of any age welcome!

Email Sylvia at [sylvsounds@yahoo.co.uk](mailto:sylvsounds@yahoo.co.uk) for any further details



in partnership with:



# Caddington Surgery Patients Participation Group

## Minutes of the meeting held on 15th May 2023 at 1pm in Caddington Surgery

We had an update on the surgery ranking in regard to other surgeries in the local area and was told we had risen in the ranking. We were told that the surgery was looking at a way to send a questionnaire to patients when they had finished their consultation, we agreed this was a good idea.

It was explained that the telephone system was in the process of being updated which would allow callers to request a ring back.

Following complaints received a short discussion was held on the problems associated with home visits by doctors and the system was explained.

It was also mentioned that after being discharged from hospital, any care package required was not always being communicated successfully. It was decided to see if the L & D Hospital had a PPG or similar and arrange a joint meeting. A check list was also suggested so that patients could make sure that every thing was in place before they were discharged.

A question was asked about blood tests as Dunstable is running on reduced hours. We were told that this was short term as they were in the process of moving to a new centre and would be back to normal hours shortly. Blood tests at the surgery are for the over 75's and those with restricted mobility.

A short discussion was held on the governments announcement that Pharmacies should be allowed to consult and prescribe for minor ailments, injuries etc. This was thought to be a good idea.

The next meeting will be at the surgery on 16th June at 1pm.

*John Larsen (Secretary to Patients Participation Group)*



## Help Slip End swim again

Many residents of Slip End will remember the excitement of going down to the swimming pool at Slip End village school. There aren't many I've spoken to who haven't swum there either while at school or during the holidays if you were lucky enough for your parents to be on the PTA many years ago (some may even have sneaked down in the evenings!).

We're unsure exactly when the pool was built but an entry on the Bedfordshire Archives is dated 1980/81. At the time a group of parents were involved in helping bring the pool to life after the school was relocated to its current site from Old School Walk. Roy Bartlett remembers arranging for paving slabs to be taken from the old school (which was about to be demolished) to put around the swimming pool. One Saturday, lots of sturdy parents turned up with cars and trailers and transported the slabs to their new home, a real community effort, like much of Slip End's history.



Until the pandemic, the swimming pool was still in use every year by Slip End pupils, meaning that children of multiple year groups were able to benefit from it. To maximise the use of the facility, pupils from Caddington Village School (federated with Slip End) used to walk across the fields to swim in the pool. However, a lack of dedicated changing facilities at Slip End meant that this wasn't as widely possible as the schools would have liked.



Unfortunately, the pool has now fallen into disrepair as the school has struggled to be able to maintain it due to rising costs and budget constraints. With the pool unavailable to both schools, pupils need to be taken offsite. It's not possible for this to be done for all year groups which means most pupils no longer have the opportunity to swim at school for more than a short programme of sessions.

The national curriculum sets out that children should leave primary school able to confidently swim 25 metres, use a range of different strokes and perform safe self-rescue if they're in trouble.

The demand for swimming lessons is huge, with many local pools oversubscribed with waiting lists up to 3 months long. As the cost-of-living crisis deepens swimming lessons will become an additional financial burden that many can no longer afford. If children cannot have swimming lessons outside of school, it becomes vitally important that they have the opportunity during school. There's no doubt that being taught to swim is a huge privilege but it's also an essential life-saving skill.

A group of parents (with support from the school and the Governing Body) are currently looking into the viability of opening the swimming pool to the community. There are a number of funding opportunities that we can apply for which will enable us to do this. This will allow the pool to generate an income by hiring to swim schools as well as offering swimming membership to the community.



But we can't do it alone. We really need the community to get behind this project. Together we can save this pool and provide a valuable asset to the school and the community.

Over the next few weeks, we will be:

- coming to the community to make sure this is something that would be welcomed, and asking for your support
- getting quotes from pool suppliers for the cost of repairing the pool
- looking at the possibility of installing essential changing rooms and toilet/shower
- applying for national and local funding
- thinking about fundraising



If you can help with any of the above or would like to be involved, please get in touch at [hello@swimslipend.co.uk](mailto:hello@swimslipend.co.uk). If you have memories of swimming in the pool, learnt to swim there or have any interesting stories we would love to hear them!

We hope to bring you good news and an update in next month's edition.

*Thanks, Amelia England*

## Chiroprapist

State Registered

Home visits Evening & Weekend appointments

Keith Appleby BSc (Hons), MChS, SRCh

Telephone: 01582 873136

## A. McClelland Pest Control



For fast response call

Mobile 0777 494 8415

or office 01582 872158

email: amcclellandpestcontrol33@gmail.com

## Charisma Hair & Beauty Salon

Ladies & Gentlemen  
01582 722801



### Opening Times

Mon: Closed

Tues: 9-5

Wed: 9-1

Thurs: 9-7

Fri: 9-6

Sat: 8-3

Easy Parking!

43B Elm Avenue, Caddington

www.charisma-caddington.com

Find us on facebook



## Need a reliable Window & Carpet Cleaner?

We operate in the Slip End area  
For free quotation contact us on  
01462 629302  
07970 406 926

A warm welcome always awaits members and their families at...

# Slip End

## SOCIAL CLUB

Be social, make it your local!

### BIG SCREEN LIVE SPORTS

sky SPORTS BT Sport

### DARTS

### FREE POOL

Monday to Friday only

### DOMINOES

### CRIBBAGE

☺ HAPPY HOUR ☺

Monday to Friday 4-7pm

### BINGO WEDNESDAYS

### LIVE ENTERTAINMENT EVERY MONTH

### GOLF SOCIETY

### FREE WI-FI

### USUAL CLUB PRICES

### OPENING TIMES

Weekdays: 4pm to 11pm

Saturday:

12 Noon to 12 Midnight

Sunday: 12 Noon to 11pm





We would like to take this opportunity to introduce how your local school is run and the benefits to the children of our local community. Slip End Village School is a nurturing and friendly school with a family feel. Children develop a love for learning, grow in independence and build their confidence socially and emotionally, preparing them for life at secondary school and success beyond.

Slip End is part of a federation with Caddington Village School and both are primary schools, taking children up to the age of 11, when they move onto a local secondary school. This means that both schools work closely together and are much like 'sister' schools, though each retain their own unique identity and 'feel'. There is a shared Senior Leadership Team and Governing Body and a number of staff work between the two sites on a day-to-day basis.

There are numerous benefits to being part of a federation, for the children, these centre around being able to develop a wider network of friends, particularly for the older children as they think about transferring to secondary – knowing 6-7 others in their classes is much more reassuring than being the only one from their primary school. What surmounts this though, is the experience that the children from both schools can benefit from in terms of shared facilities. As Caddington used to have children up to the age of 13, it still benefits from the purpose-built, specialist facilities of a middle school: children can cook in a Food-Tech room, use Bunsen burners in the Science lab and develop their design and technology skills in a fully-equipped DT workshop. Whilst Caddington children enjoy access to these facilities daily, Slip End staff can take their classes there for curriculum enrichment days – made easier by our minibus that you may see driving around.



Slip End Village School has welcomed a new Head of School this term as Andrew Young has joined us. Andrew has thrown himself into Slip End life, getting to know our pupils and families. As Executive Headteacher, I work across the federation and lead the schools strategically and Andrew is in charge of the day-to-day management of Slip End. Highlights so far this half term obviously include the Coronation, where the children, staff and parents celebrated with an afternoon of traditional garden games on the school field. Additionally, children from both schools recently returned from an international trip to France during the Easter holidays, where they immersed themselves in the culture and practised their language skills.

## Gardening Notes *by Russell Sprout*

As I write this we are having some very mixed weather, I just hope it settles down soon so we can all get on with some serious gardening. Let's hope too that we have a nice summer after such a wet and windy winter and spring, but not as hot as last year!.

Any early herbaceous plants that are starting to fade, cut back to approximately three inches, this will encourage a fresh crop of foliage and possibly a second flowering. Dahlias and chrysanthemums can either be stopped (pinching out the top bud) to produce bushy growth, or dis-budded (pinching out the side buds) if large showy blooms are required. This should be done by the middle of the month for best results, again a good mulch around the roots will prevent plants drying out. Syringe Sweet Peas with a mist-like spray of water in dry weather. Hoe around rose bushes and remove any suckers from the root stock and mulch to preserve moisture. If you require long stem roses for cutting, then remove the side buds by pinching them out when small and leave the top bud, this will produce a bigger and better quality bloom. When the ground is soft after a shower spike the lawn so that moisture can penetrate down to the roots and keep the lawn looking green.

If you have alpines, continue weeding and hoeing. Trim dead flowers from aubrieta and saxifrage to prevent seeding, and clip other plants to keep them tidy. Water plants in dry weather, preferably using a fine mist in the evening. Border carnations and pinks will require support to stop them looking unruly. Early in the month cut the grassy leaves off irises near to the soil level as the rhizomes need to be baked by the sun to produce good flowers. Primroses and primulas can be dug up and divided after a shower and replanted straight away this month to produce a good display next year. If left in large clumps the flowers will be small and of poor quality.

Wallflowers and sweet Williams can be sown in their flowering positions at the end of the month for flowering in the spring. If fruit trees such as apple and pear are loaded with fruit, thinning out will improve the size of the fruit, but do this in stages as some fruit will limit the crops they carry naturally by dropping some of the fruit. Strawberries will produce runners this month so if you wish to increase your stock or replace any old unproductive plants stake the runner in the ground until it roots. This can be done simply by placing a stone over the runner, unwanted runners should be removed.

Carry on planting seeds for a succession of crops such as lettuce, radish, carrots and beetroot and pick when young for best flavour. Continue digging new potatoes, as the ground becomes vacant this can be used for leeks. Plant out brussel sprouts, winter cabbages, purple and white sprouting in their final positions this month. Marrows and tomatoes are safe to be planted outside now. Towards the end of the month leeks can be planted six inches apart in rows twelve inches apart by making a hole with a dibber and drop the plant in, water in with a can to wash the soil around the roots, do not fill the hole with soil and do not firm in as this will impede growth. If you have fruit trees watch out for pests and thin fruits if crop is heavy, allowing for natural dropping.

**The Gardening Club are having a Garden Party at 86 Front Street on Saturday 17<sup>th</sup> June, 2pm – 4pm, there will be refreshments available, plants for sale and a raffle, do go along and support them.**



## St Andrew's Church & Monthly Community meeting

We celebrated the forthcoming Coronation at the April community meeting with delicious Coronation cakes, Crown competition, and books on sale, plus meeting up with friends. It was lovely to have some children there too, who are all most welcome. There is a wonderful children's corner full of toys and books and puzzles to do also.



Flowers for the Coronation .

On May 27th there was another Community Coffee morning from 10—12 at the Church.



It has been suggested that a monthly Litter pick around the village could take place on the last Saturday of the month ending up at the Community Coffee morning—great idea.



*Lissie and Stanley strike a pose with a Crown for the Coronation.*

On the last Sunday of the month there is a Family Service at St Andrew's. The service starts with the ringing of the bells. Ted is becoming an expert - do come along.



*Report by Sue Briggs*



**BUILDING & ROOFING Co.**

**EXTENSIONS - CONVERSIONS - RENOVATIONS**

- ✓ Restoration ✓ New Build
- ✓ Flat & Pitched Roofing
- ✓ All General Building Work
- ✓ Painting & Decorating
- ✓ Electrical Works & Plumbing
- ✓ Brickwork Contractors
- ✓ Patios & Driveways ✓ Fencing
- ✓ Groundworks/Drainage
- ✓ Insurance Work
- ✓ Garage Conversions
- ✓ Public Liability Insurance

**EXTENSIONS • CONVERSIONS • RENOVATIONS**

[www.inkermanbuilding.co.uk](http://www.inkermanbuilding.co.uk)

**The Complete Design  
Plan-Completion Service Included**



**Tel: 01727 835702 or Mobile: 07774 955255**

**Tel/Fax: 01582 876509**

Email: [info@inkermanbuilding.co.uk](mailto:info@inkermanbuilding.co.uk) • 46 Church Road, Slip End, Bedfordshire LU1 4BJ

## Why practice self-defence?

Shinrai Martial Arts teaches Jujitsu and kickboxing giving you two Martial Arts styles in one club. These are just some of the benefits to people of all ages.

- Promotes physical fitness, strength and flexibility
- Builds confidence and awareness
- Learn potentially lifesaving skills
- Strong social aspect where many friendships can be made
- Discipline
- Lose weight
- Fun

Children (ages 6 – 15)  
Women only (16+)

Monday 6.15pm – 7.15pm  
Monday 7.30pm – 8.30pm

**First Class Free**

**Location:**  
Find us at the brand new Lyons Community Centre in Caddington Woods,  
33A Mallard Crescent,  
Caddington,  
Luton.

To book or for further information please email Sensei Teasha Mitchell  
[teasha@shinraimartialarts.com](mailto:teasha@shinraimartialarts.com)

**Find out all about us at [www.shinraimartialarts.com](http://www.shinraimartialarts.com)**

Shinrai Facebook Page: Shinrai Martial Arts

**TEASHA MITCHELL**

2ND DAN BLACKBELT JUJITSU  
1ST DAN BLACKBELT KICK BOXING

DBS CHECKED

NATIONAL BLACKBELT REGISTERED

MEMBER OF BRITISH MARTIAL ARTS AND BOXING ASSOCIATION



INSPIRING  
CONFIDENCE

# CRIME REPORT



Parish Crime Statistics

April 2023



## **Aley Green**

Assault without injury on a constable – 3

Threats to kill - 1

Total - 4

## **Pepperstock**

None

## **Slip End**

Public Fear Alarm or Distress - 1

Other Theft – 1

Assault without injury – 1

Harassment – 1

Total – 4

## **Woodside**

None

## **Caddington**

Theft from a Motor Vehicle - 2

Public Fear Alarm or Distress - 1

Other Theft – 1

Assault with Injury on an Emergency Worker – 1

Shoplifting – 1

Assault with intent to cause harm – 1

Assault with injury – 1

Assault without injury – 1

Total - 9

CRIME SCENE DO NOT CROSS CRIME SCENE DO NOT CROSS CRIME SCENE DO NOT CROSS CRIM

## Caddington W. I



We welcomed three visitors tonight. They were in for a shock.....due to a change of venue for one night only also our Lace Making Speaker was unable to attend., we spent the evening playing games. Firstly, a game of Bingo. The

Bingo numbers only went up to 75 but the cards were 90. We had to cross out the extra numbers. Carol Hardy was the caller with much hilarity when some of the bingo balls rolled onto the floor. One or two even dropped into a member's bag! The ABC game was interesting, we were given the letter D and had to name animals, food, and other general items. It was surprising how difficult it was. You try and find a vegetable beginning with D!

To Toast the Crowning of King Charles III we had a flute glass of prosecco with orange juice ~ some of us bypassed the orange juice. We also set a theme of red, white, and blue.

St. Georges Day Celebration held at Heathfield Centre was well attended. Our Ladies served the refreshments and, once the smell of the bacon rolls got to us, people rushed to have one. Well done Chris, Carols J and H, Maureen M, and Sharon for preparing and serving. A thank you to all the other ladies who helped in the kitchen and the event generally. It was a great success. The funds for the day were split between Riding for the Disabled and our W.I.

A few months ago we had a lady from Ukraine speak to us about their people and country. From this, we bought Easter Eggs and went along to their Meeting Place. The children were delighted. Some of our ladies joined in painting and decorating eggs. The Ukrainian families made us very welcome.

Our meeting on 6th June will be a demonstration of Tai Chi. We are looking forward to this. Competition: Bring along something beginning with A G and M. In July we hope to have a summer picnic, details to follow.

Linda Edwards

07761 340108

## Richard Gurney & Son Contracting Services

Longview, Luton Road, Markyate

*Tree Surgeons & Fencing Specialists  
Hedge Trimming & Tree-stump removal  
Wood Chippings (good for mulching)  
Logs for Sale*

**Tel. (01582) 840407**

*Established 1970 - Fully Insured*

## Hydrotech Plumbing

Your local plumbing and heating engineers:

- Boiler breakdown and servicing
- New Boiler installation
- Landlords gas safety certification
- Gas fire installation and servicing
- All gas and plumbing work undertaken
- Fully insured
- Free quotations

MARKYATE based company

**01582842889 07932796632**



## P H SERVICES

CAR & MOTORCYCLE REPAIRS  
PHILIP HALL  
MECHANIC

4 Servicing 4 Bodywork  
4 Tyres 4 MOT  
4 Computer Diagnostics



UNIT 3  
MANOR ROAD GARAGE  
CADDINGTON

Office: 01582 722251  
Mobile: 07769 734417

Damaged bikes wanted for Cash  
Nationwide collection  
e-Mail: philhall1200@btinternet.com

10% Discount with this voucher!



## STROBE ELECTRICS

ELECTRICIAN

NIC APPROVED

ESTABLISHED 25 YEARS

House Rewires Part P REG

No Job Too Big or Small

For a job well done

Quality Assured

Call Graeme

**01582 451442 or 07956 570692**

**Problems  
with your  
PC or  
Apple-mac?**



*For expert advice & trouble shooting  
call Tony Glynos, 458353 or 07792 653264*

[tonyglynos@outlook.com](mailto:tonyglynos@outlook.com)

Friendly

**Karen Jordan**

07970487338

Grass Cutting

Weeding

Strimming

General Tidying



Reliable

Local

## PILATES IN SLIP END

Tuesday morning, Peter Edwards Hall 9.30am  
Wednesday evening, Slip End School 7.30pm

All ages & levels catered for. Come & try, first class free.

Introducing the Pilates Reformer Machine. Ideal for rehabilitation after injury or surgery. Perfect for sport specific training, Pre & Post Natal & general fitness.

For more information contact 07811343566 or  
email:- [golf58.ag@gmail.com](mailto:golf58.ag@gmail.com)

**JOHN SAUNDERS & SON**  
Incorporating E. Franklin & Co.

## FUNERAL DIRECTORS

48 Duke Street, High Town, Luton



% 731696

Day & Night Service

Monumental Services

Members N.A.F.D.

Prepaid Funeral Plans available



# St George's Fun Day in Caddington

The rain held off most of the day for our St George's Day event at Heathfield Centre on Sunday the 23rd of April. Visitors started arriving at 11 o'clock and they were able to enjoy a variety of Performers singing and dancing and entertaining in the Hall, there was a Marquee with local crafters selling their wonderful items, there were Classic Bikes and things for the children to do outside, there was a grand tombola and facepainting and other stalls in the foyer, the WI were very busy in the kitchen selling bacon rolls, cakes, etc and tea and coffee etc.

Many thanks to the committee and all the helpers and people who donated to this annual event. We have been able to donate **£700.00** for Riding for the Disabled charity.



We believe good value and excellent service go hand in hand.  
NEVILLE. Because there is a difference.

## LUTON

Neville House, Marsh Road, Leagrave LU3 2RZ

t: 01582 490005

e: [luton@nevillefuneralservice.com](mailto:luton@nevillefuneralservice.com)

[www.nevillefuneralservice.com](http://www.nevillefuneralservice.com)



*Diary - If you would like your events included, please contact the Editor*

## What's going on in 2023

**Weekly** Picnic in the Pub—Rising Sun Tues 12am

**Weekly** Chatty Club every Wednesday Rising Sun 2pm—4pm

### June

**Sun 4 Jun** Churches Count on Nature - St Andrew's Church - 10:30am

**Sat 17 Jun** Gardening Club Tea Party - 2pm-4pm - 86 Front Street

**Mon 19 Jun** Gardening Club Guest Speaker 8pm Village Hall

**Sat 24 Jun** Community Coffee Morning - St Andrew's Church - 10am

**Sat 24 Jun** Open Air Cinema at the School—see Poster for details

**Sat 24 Jun** Quiz Night- 7:30pm - Slip End Social Club

**Sun 25 Jun** Gardening Club Garden Visit (Woburn) —meet 1:00pm Village Hall

### July

**Sat 8 July** Village Day Slip End Playing Fields 11am—4pm

**Wed 26 Jul** GNS Summer Tea Party - Village Hall - 2:30pm

### Parish News Online

For those who like to read magazines on tablet / screen, Parish News can be found online at:-

[www.slipendparishcouncil.co.uk](http://www.slipendparishcouncil.co.uk) and

[www.slipend.co.uk](http://www.slipend.co.uk) where historical copies can also be found.

### Bin Collections— June

Orange and Green — 2nd, 16th, 30th June

Black bin and Glass — 9th, 23rd June, 7th July

Food Waste bin — Every Friday



## COMMUNITY AND SERVICES

|                                         |                                                              |
|-----------------------------------------|--------------------------------------------------------------|
| <b>Services:-</b>                       | <b>Good Neighbour Scheme:</b> 07513 37 24 15                 |
| <b>Shop at the Crossroads</b>           | 401069 Mon—Sun 7.00 to 19:30                                 |
| <b>Slip End Garage</b>                  | Markyate Road, 456888                                        |
| <b>Doctor</b>                           | Caddington Surgery 725673                                    |
| <b>Doctor</b>                           | Markyate Surgery 841559                                      |
| <b>Pharmacy</b>                         | Medigreen, Caddington 457800                                 |
| <b>Schools:</b>                         | <b>Slip End Village School</b> 720152 <b>Manshead</b> 679400 |
| <b>Caddington Village School</b> 726058 | <b>St Mary's Catholic Primary</b> 602420                     |

|                                                                                |                                                                |                                                                                                                 |
|--------------------------------------------------------------------------------|----------------------------------------------------------------|-----------------------------------------------------------------------------------------------------------------|
| <b>Churches:-</b>                                                              | <a href="mailto:wayne@dngsales.co.uk">wayne@dngsales.co.uk</a> | <b>FoSELS</b> 07810002942 (PTA)<br>or <a href="mailto:fosels@outlook.com">fosels@outlook.com</a>                |
| <b>St Andrew's Church</b>                                                      | <b>Pepperstock Archers</b>                                     | <b>Women's Institute</b>                                                                                        |
| <b>Rev Nick Mwandia</b>                                                        | 615216                                                         | 01582 737036                                                                                                    |
| 01582 253537                                                                   | Email LBP121@aol.com                                           |                                                                                                                 |
| 07398663729                                                                    | (Lee Prebble)                                                  |                                                                                                                 |
| <a href="mailto:revstandreww@gmail.com">revstandreww@gmail.com</a>             | <b>Tennis</b> 733253                                           | <b>Chatty Club</b> Jean Turner 01582                                                                            |
| <b>Julie Taylor (Reader)</b>                                                   | <b>Runners</b> Peter Barber                                    | 421304 or Cathy Rose 01582                                                                                      |
| 01582 413912                                                                   | 07587 89260.                                                   | 457362                                                                                                          |
| Mob 07841482119                                                                | <b>Slip End Veterans Football</b>                              |                                                                                                                 |
| <a href="mailto:duncan.taylor@btinternet.com">duncan.taylor@btinternet.com</a> | Wayne Leslie (see football)                                    | <b>Book Club</b> (contact via                                                                                   |
| <b>Wardens:</b>                                                                | <b>Line Dancing</b> —Jean                                      | Parish News)                                                                                                    |
| <b>Steve Baird</b> 738205                                                      | Anderson 01582 2603030                                         |                                                                                                                 |
| <b>Susan Wiltshire</b> 727000                                                  |                                                                |                                                                                                                 |
| <b>Aley Green Methodist Church.</b>                                            | <b>Community:-</b>                                             | <b>CaSeBuG (Caddington and Slip End Bus user group).</b> <a href="mailto:info@casebug.org">info@casebug.org</a> |
| <b>Minister:</b>                                                               | <b>Gardening Club</b> 423622                                   |                                                                                                                 |
| <b>Rev Nigel Bibbings</b>                                                      | <b>Brownies</b> 723109                                         | <a href="http://www.slipend.co.uk">www.slipend.co.uk</a>                                                        |
| <b>Senior Steward:</b>                                                         | <b>Beavers,</b>                                                |                                                                                                                 |
| <b>Ann Meader</b> 733668                                                       | <b>Cubs &amp; Scouts</b> 418014                                |                                                                                                                 |
| <b>Sport:-</b>                                                                 | <b>Pre-School</b> - Hayley                                     |                               |
| <b>Bowling Club</b> 412506                                                     | Bolton- 07889824367                                            |                                                                                                                 |
| <b>Football</b> 517042 or 07515687160                                          |                                                                |                                                                                                                 |
|                                                                                |                                                                | <a href="http://Slipendparishcouncil.co.uk">Slipendparishcouncil.co.uk</a>                                      |

### Items for the next issue (July/Aug) to us by 15th June

(Editor — Matt) Adverts by 10th please

Any delivery problems? Contact Alan Buttery at 1 Claydown Way  
(01582 724527), [alanjan4546@gmail.com](mailto:alanjan4546@gmail.com)

Anything interesting to report about village activities, photos, holidays, etc.  
Please contact us, letters and e-mails are encouraged.

Views expressed by our contributors are not the Editors' own.

Articles should be sent by the 15th of the preceding month to the Editors - Alison

Wilson, 23 Claydown Way or Matt Freeman 20 Crawley Close or e-Mail  
[parishnews@slipend.co.uk](mailto:parishnews@slipend.co.uk) Advertising queries to Jo Moss 01582484373 or  
[Parishadverts@gmail.com](mailto:Parishadverts@gmail.com)

Parish News is grateful to our advertisers for their contributions. Please support them.



## YOUR PARISH COUNCILLORS

Clerk to Parish Council — Tracey O’Neill 07487 850249 (9am to noon weekdays)  
[clerk@slipendparishcouncil.co.uk](mailto:clerk@slipendparishcouncil.co.uk)

Sarah Minnighan - [s.minnighan@slipendparishcouncil.co.uk](mailto:s.minnighan@slipendparishcouncil.co.uk) 07868 742904 (Chairman)  
Carol Beeton - [c.beeton@slipendparishcouncil.co.uk](mailto:c.beeton@slipendparishcouncil.co.uk) 405597  
Carol Brennan - [c.brennan@slipendparishcouncil.co.uk](mailto:c.brennan@slipendparishcouncil.co.uk) 07979 402847  
Simon Patterson - [s.patterson@slipendparishcouncil.co.uk](mailto:s.patterson@slipendparishcouncil.co.uk) 07767 615714  
Paul Shaw - [p.shaw@slipendparishcouncil.co.uk](mailto:p.shaw@slipendparishcouncil.co.uk) 07957 188947

**GOOD NEIGHBOUR SCHEME (GNS) 07513 37 24 15**

## WHO DO I CALL?

**Fly Tipping (CBC)** 0300 300 8000 [Customer.Services@centralbedfordshire.gov.uk](mailto:Customer.Services@centralbedfordshire.gov.uk)  
**Road issues:-** [www.centralbedfordshire.gov.uk/reportit](http://www.centralbedfordshire.gov.uk/reportit)  
**Police** 101 **Aircraft noise** 395382 **Airparks** 393321  
**Water leaks** 0800 3765325 **Cold Calling** 0345 4040506  
**Out of hours noise** 0300 300 8098 **Street Lighting** 0300 300 804

### Your Central Beds Councillors



Contact details



Cllr Kevin Collins

Cllr Vicky Malone

[kevin.collins@centralbedfordshire.gov.uk](mailto:kevin.collins@centralbedfordshire.gov.uk)

[councillorvicky@gmail.com](mailto:councillorvicky@gmail.com)

**MP's**

**Contact details**  
**Rachel Hopkins**



*Her local office is located at:  
3 Union Street Luton LU1 3AN  
For advice, surgery appointments  
call 01582 457 774*

## PETER EDWARDS HALL & PLAYING FIELD

Ideal for children's & adult's parties, meetings, etc.  
Kitchen facilities with catering service available  
Available for various sports activities  
Excellent sports changing facilities  
Facilities for the Disabled  
For Bookings: please contact  
[PEHall@slipendparishcouncil.co.uk](mailto:PEHall@slipendparishcouncil.co.uk)

## SLIP END VILLAGE HALL

*Your Village Hall  
for Dances, Receptions & Parties  
Facilities for the disabled  
For bookings contact  
[villagehall@slipendparishcouncil.co.uk](mailto:villagehall@slipendparishcouncil.co.uk)  
or Gill Plummer on 01582 723109*

## ESTABLISHED 1939



### NEW SALES



We always have great offers available including high deposit contributions, upgrade packages, free service packs and highly competitive finance options.

To find out more about our latest offers, visit us online or call our sales department now.



### USED SALES



Here at Slip End Garages we have a fantastic choice of used cars for sale. Our stock is always changing and currently includes used Citroën, Subaru and Isuzu vehicles.

We are always updating our website with our current stock visit us online or call now.



### PARTS



Whilst being one of the largest Citroën Dealerships in the Home Counties we also have one of the largest supply of vehicle parts and accessories available.

Whatever you need, we are here to help, just give our parts department a call.



### SERVICE



We have over 73 years of Vehicle maintenance experience with a full collection and delivery service available to our customers as well as provide courtesy cars for service and MOT.

Call our service department and we will take care of all of your service requirements.

**LOCAL RESIDENTS RECEIVE A FURTHER £200 DISCOUNT ON ALL NEW AND USED VEHICLES + SPECIAL RATES ON ALL SERVICING**

## Slip End Garages 01582 456888

Markyate Road Slip End, Luton, Bedfordshire, LU1 4BU

Our Service Centre is located in Grove Road, Slip End

Email: [info@slipendgarages](mailto:info@slipendgarages)

[WWW.SLIPENDGARAGE.CO.UK](http://WWW.SLIPENDGARAGE.CO.UK)