

Parish News

April 2024

The Community Magazine for you.
With Information and News from you.

Delivered to the whole of the Parish

Aley Green

Slip End

Pepperstock

Woodside

Editors' Notes

Hello there! Welcome to the April edition of the Parish News.

Now I was tempted to do an April Fool edition of Editor's notes this month, with random nonsense, but then I thought, those that actually read my notes (*does anyone actually read these?! I am genuinely curious*), usually get a bi-monthly "treat" of my nonsense ramblings anyway, so I decided it wouldn't really be any different from the usual....

With the weather warming up it looks like Spring has finally sprung (if it pours all month now that I've committed that to paper, you can totally blame me, I will definitely be blaming me) and we can look forward to some longer, warmer days.

So, what have we got in store for you this month? There's news from the Slip End Social Club and the new selection of beverages that have just arrived. We have news from Mr Young at Slip End Village School, there's some puzzle pages to get the grey matter fired up and news from our local Parish Council.

Please also have a read of the Gardening Club article on page 10 and about the upcoming, and much loved, Open Garden Day coming in June.

We, here at the Parish News, are also on the look out for proof readers for the magazine, so if you do have a keen eye for spelling, grammar and can put up with reading my waffle on a bi-monthly basis, please do get in touch, details are to the right.

I'd also like to encourage you to send in your news articles and photos. It's a community magazine and we love to hear from you, the community. Without you there is no magazine so please "don't be shy to just say Hi".

On that extremely cheesy note, I'll let you get on and read the more interesting parts of the magazine. Have a great month "y'all"

Matt's Musing:

To do list: (1): Go to local pet shop (2): Buy bird seed (3): Ask how long it will take for the birds to grow (4): Wait for the reaction

Brownies

1st Woodside Brownies

Since the last magazine we have had 2 girls join us. We still have some spaces for 7-10 year olds.

You can contact: Brown Owl: 07543 806663 or Wise Owl 01582 723109

We meet again on **Wednesday 17th April** after the Easter Holiday

Gillian Plummer
Wise Owl

Proof Readers for Parish News

Can you spare an hour or so a month? (Up to 10 times a year)

If you have a good eye for spotting errors in print then could you help your community magazine by being one of a number of proof readers?

The editors need someone to check for accuracy and anything they might have missed before the magazine is sent to the printer. A selection of helpers would mean that there is always someone available.

Please contact parishnews@slipend.co.uk if you think you could help.

Thank you!



All Change at **Slip End Social Club**

If you've stopped in recently you will have noticed there have been a few changes in the Club this month.

We have a new selection of lagers and ales on draft – **Red Stripe, Neck Oil, Fosters, John Smiths, Moretti, Amstel, Guinness Extra Cold, Inch's** cider. All at our usual great prices!

Slip End
SOCIAL CLUB



We still have our Happy Hour on Monday to Friday 4pm to 7pm!

This month, come and join us for **Music Bingo** on **Saturday 27th April** from **7.30pm** (see page 29 for details).

This promises to be a fun night for all! Check out our Facebook page for future events that we will be holding each month.

We are also happy to hold your own events – birthdays, anniversaries etc.
Just pop in and ask for Jenny.

Slip End 
SOCIAL CLUB

Be social make it your local!
Slip End Social Club
13 New Street, Slip End

The Good Neighbour Scheme
& St Andrews Church
announce the return of...

Soup & a Sarnie

at **The Rising Sun**
Tuesdays 12.00pm to 2.00pm

~~~

9th, 16th, 23rd and 30th April



~~~



*Occasional
Entertainment*

~~~



£3 for soup & a sarnie  
£1 for tea or coffee



If you need a lift call 07513 372415





# PARISH COUNCIL UPDATE

## **Flood Working Group & Flooding**

Members agreed to the purchase of some further flood kit, to be stored by the council and made available where needed in the parish. The chairman will order 4 new road signs, filled sandbags, traffic cones and Hydrosnakes.

The chairman is in regular contact with Central Beds Council Flood and Highways departments to encourage the works needed in certain hot spots in the parish are carried out.

If any residents would benefit from flood equipment please contact the chairman or clerk.

## **Residents Parking Scheme**

We still await contact from Central Bedfordshire Council to advise what our next steps are, however disappointingly with only a 5.2% reply rate (49 properties out of over 900) to our survey, we're not sure CBC will be able to suggest anything, and we may end up running further surveys.

## **DD 80<sup>th</sup> Anniversary Celebrations**

Our clerk is busy organising this celebration to be held at the Village Hall on Saturday 8<sup>th</sup> June 2024, and is being assisted by the Good Neighbour Scheme. If any residents would like to help please contact our clerk – Tracey – at [clerk@slipendparishcouncil.co.uk](mailto:clerk@slipendparishcouncil.co.uk)

## **Councillors Evening**

On Monday 26<sup>th</sup> February our chairman and members hosted a meet and greet evening for other parish councillors in our area. Our chair has been a councillor for 16 years and has only ever met a few of her counterparts over those years, so it was nice to put names to faces. This may become a regular get together, with each council hosting in turn.

Next meeting is Monday 8<sup>th</sup> April 2024 at 7pm at the Village Hall.

**Cllr Sarah Minnighan – Chairman**

By now residents will no doubt know that BBC Radio 1's Big Weekend is being held at Stockwood Park from Friday 24<sup>th</sup> May to Sunday 26<sup>th</sup> May 2024.

Slip End Playing Field Management Committee were approached to lease the field for parking for the event but they have declined the offer.

Our playing field does not drain well at the best of times, and if we were to be subjected to rainfall in the week or weeks leading up to the weekend, or over the weekend itself, the condition of the field would be severely compromised, which would not only be costly to repair but would also jeopardise Village Day.

### To all our Residents

Whilst Luton Borough Council are not concerned about Slip End being impacted by traffic over that weekend, as they feel we are 'too far away' from the event, we all know we **WILL** be impacted.

We already have an airport parking issue, so an event that is within easy walking distance will no doubt cause us problems. Upper Woodside could also be affected. Bear it in mind, be aware of extra vehicles in the village and potential congestion.

**Cllr Sarah Minnighan**

**Chairman of Slip End Parish Council and Trustee of Slip End Playing Field Management Committee.**



# Slip End Preschool



Open Monday - Friday  
(Term time only)

🕒 9am - 3pm daily

📍 Slip End Village Hall

Children aged 1-4 years

- ✓ Extra-curricular activities
- ✓ High staff-child ratio
- ✓ 2, 3 and 4 year funded places
- ✓ Rated **GOOD** by Ofsted  
(September 2022)

For more information please contact  
**Hayley Bolton** on **07889 824367**

Central  
Bedfordshire



## GCSE ENGLISH TUITION

The exams are coming!

**One-to-one tuition for 15/16 year olds (or adults) preparing for GCSE English Language and/or Literature exams by experienced teacher, with exam board experience. At your home, or online.**

Tailored and personalised lessons  
Homework set and marked  
Exam practice

From £20 per hour.

Contact Lynn to arrange a consultation.  
Email: [gcsehereicome@gmail.com](mailto:gcsehereicome@gmail.com), with any queries  
or to arrange a free consultation.

To advertise here

Contact

Jo Moss 01582 484373

Or

[Parishadverts@gmail.com](mailto:Parishadverts@gmail.com)

## TGB TREECARE LTD

### Tree Surgery & Powered Access Hire

WE SERVE BEDFORDSHIRE,  
HERTFORDSHIRE &  
SURROUNDING AREAS

FULLY  
INSURED

FREE  
QUOTATIONS

Based in Woodside, Near Caddington, Luton, Beds.

07721 032669 | 01582 410 597  
[info@tgbtreecare.co.uk](mailto:info@tgbtreecare.co.uk)  
[www.tgbtreecare.co.uk](http://www.tgbtreecare.co.uk)







## Aley Green Methodist Church



### Dates for April

**Tues 2nd 10:00—12:00am** Cakes and Company and Little Lambs Club (Storytime 10:30am)

**Sat 6th** Prayer Breakfast 10am led by Liz Higgins

**Sun 7th 10:30am** Morning Service led by Catherine Roots

**Sun 14th 10:30am** Morning Service Local Arrangement

**Mon 15th 7:30pm** Ecumenical Fellowship led by Jo Prowse

**Sun 21st 10:30am** Morning Service led by Sheila Norris & Sunday School

**Wed 24th 7:30pm** Coffee Evening in aid of Mission Direct

**Sun 28th 10:30am** Morning Service led by Geoff Best

**Sun 5th May 10:30am** Morning Service led by Steve Rogers & Sunday School

**Sun 12th May** Ecumenical Christian Aid Service at All Saints Caddington 4pm

The World Day of Prayer service was hosted by Caddington Baptist Church this year. All five churches from Caddington and Slip End took part and a good sum was collected for the work of the charity. The service was prepared by Christian Women from

Palestine and was especially poignant considering the current situation in that part of the world.

Aley Green members raised a further £200 for the WDP charities at a "Soup and a Pudding" lunch. Well done to all.

Everyone is welcome to join any of our services and activities. You will be given a warm welcome.

Sunday School and Little Lambs Club will always be happy for new members to come along and see what we do.

Little Lambs Club welcomes those with babies or toddlers to join for stories and craft. During school holidays older children are also very welcome to come along. Thanks to those who supported our fundraising efforts. The upstairs room where they meet is now warm and comfortable with freshly painted walls and pretty curtains, very welcoming!

We hold regular events throughout the year in aid of a selection of charities, based locally, in the UK and abroad.

Thank you for all your support.

*God bless,  
from all at Aley Green*



## GARDENING CLUB

The Club AGM was held on Monday 22nd January.

Chairperson Rosemary Wickens advised the Plant Sale did not go ahead in 2023 due to the cost of the plug plants which had gone up quite drastically, insufficient volunteers to bring plants on and increased hall hire charge.

The accounts were distributed which showed the Club was in a healthy financial position, therefore membership was being kept at current rate of £5 pa. Visitors and Guests are welcome at meetings at a charge of £2 pp.

Rosemary advised we would like to try and organise an Open Gardens event this year on **Saturday 29<sup>th</sup> June. (See poster opposite page)**. It will only go ahead if we can get at least 8 gardens and some of those need to be new gardens, i.e. not having opened before. The existing committee members were all prepared to stand again and were therefore re-elected en-bloc.

The Club continues to sponsor the flower beds outside the bungalows in Crawley Close. After the AGM business was completed, Alison Wilson gave an interesting presentation of photos and anecdotes from gardens she had visited.

Thank you, Alison.

***PN Gardening Correspondent***



Mon 17th June  
Village Hall, 8pm  
**Gardening Club**

Guest Speaker -  
Maria Ellis  
**"Low Maintenance Gardening"**

New Members Welcome  
Guests/Visitors £2



## OPEN GARDENS 2024

Slip End hosted its ninth Open Gardens' Day in July 2022. There were ten gardens, which approx. 50 people visited. The extreme heat on the day contributed to lower visitor numbers than usual but, a good time was had by all. It was also good to have five new gardens out of the ten which opened, and made for an enjoyable and interesting day for visitors. People gained ideas for their own gardens, and also got to know/make friends with other people in the village.

We are now planning for the **2024 event on Saturday 29<sup>th</sup> June**. Put the date in your diary now!! We are already looking for gardens, big or small, and would emphasise that it is not a competition. Your garden does not have to be anything special; we just want you to be enthusiastic about it. You would be surprised how many visitors pick up ideas and tips from gardens. If you live in the Parish and would be interested in opening your garden, please complete details below and return **by the end of May to:-**

Rosemary Wickens, 86 Front Street, Slip End  
or e-mail [rosemary@kididee.plus.com](mailto:rosemary@kididee.plus.com)



*A selection of previous year's entries are shown above*

I would like to 'open my garden' on Saturday 29th June /  
I would like more information:

Name.....

Address.....

Telephone No. ....

Email.....

## Message from St Andrew's

In April, St Andrew's will hold its equivalent of an AGM, and we will look at our mission statement:

**We are here as God's family, to draw closer to God, to live out our faith and welcome all into the love of God.**

That statement explains why we bother to go to church. We could be Christians on our own, without meeting together, but that isn't what Scripture directs us to do. (I do know that it can be really hard to get to church with time pressures and competing activities – I was that person, when my kids were little! I know that it can be hard for the frail and infirm to physically get to church – I hope that Zoom helps with that a bit.)

Coming to church is a way of practising what we'd like the world to be like.

It is a supportive space in which to confess our limitations and imperfections and get used to receiving God's forgiveness and hope in response to our honesty.

It encourages us to push back against the materialism that reduces all our experiences of the world (including all the people in it) to instruments and resources. And it is a place where our life is not measured in terms of status, career, or any goal.

It is a place to bring doubts and questions, as we acknowledge that we are all on a journey of understanding, and we live with the mystery of the divine.

Church is a space to cultivate our unique talents and creative potential, offered in the service of love, not money. (And I'm not just talking about joining a rota!)

Sometimes people don't want to come to church because they have been hurt in the past. We are sorry. We are human and make mistakes. We want to do better. Sometimes people are worried that they won't know what is going on. Well, let me tell you a secret, I quite often don't know even when I'm leading the service, so you would be in good company. We are VERY relaxed. Why not be brave? You're welcome!

***"Let us be concerned for one another, to help one another to show love and to do good. Let us not give up the habit of meeting together, as some are doing. Instead, let us encourage one another all the more..." (Hebrews 10:24-25a)***

**Julie Taylor**  
**Reader at St Andrew's Woodside**

## St. Andrew's Church - Dates for April



If you would prefer to join our live services “virtually”, Nick has set up a Zoom link which is open to all. You can join by putting in the number 878 5926 2657 and the passcode 664663 to Zoom

### **Services to be held at St Andrew’s this month:**

**April 7th 10.30am:** Informal Communion – A touch for Thomas

**April 14th 10.30am:** Morning Praise – Jesus Appears to His Disciples

**April 21st 10.30am:** Holy Communion – The Good Shepherd

**April 28th 10.30am:** Short Family Service – The True Vine (followed by the APCM)

We are continuing with a monthly Family Service on the last Sunday of each month. Of course all ages are welcome to every service, but the service content will be especially accessible to all generations at the Family Service.



**Little Stars starts at 10.30am each Wednesday.**

We will be closed for the Easter holidays on 3rd & 10th April, but will be running sessions on **17th & 24th April**.

The kettle goes on at **10am**

Turn up whenever suits your little one’s routine.



# @WAYNE'S

*Professional Hairdressing  
for all the family*



@WAYNE'S - Church Road, Slip End - 01582 294 248

## Butterfly Funerals

INDEPENDENT FAMILY  
FUNERAL DIRECTORS

To find out more or just have a discussion  
on what you need to do after a bereavement

please call

**01582 968130**

or visit our website:

**[www.butterflyfuneralsltd.co.uk](http://www.butterflyfuneralsltd.co.uk)**

**39 Elm Avenue, Caddington  
Luton LU1 4HS**

*Caring with Compassion*

Butterfly Funerals is run by Teresa and Peter who have been in the funeral service business for over 30 years. During that time they have gained a first class reputation for professional quality combined with a caring and compassionate approach to family and friends of the departed.

Services include:

- ☒ 24 hour call out 7 days a week
- ☒ Traditional funerals
- ☒ Bespoke funerals Pre-paid funerals
- ☒ Green funerals
- ☒ Memorial consultants
- ☒ Chapel of Rest
- ☒ Home visits
- ☒ Flowers
- ☒ Custom wills

# Fed up with pot holes? Flooding? Litter?

The quickest and easiest way to report parish problems is via the **FixMyStreet** app.

Downloadable to Android or iPhone devices, you can create an account and then track the progress of the issue.

The screenshot shows the FixMyStreet website. At the top, there's a navigation bar with the FixMyStreet logo and links for 'Report a problem', 'Sign in', 'All reports', 'Local alerts', and 'Help'. Below this is a heading 'Report, view, or discuss local problems' with a subtext 'like graffiti, fly tipping, broken paving slabs, or street lighting'. A form prompts the user to 'Enter a nearby UK postcode, or street name and area' with an example 'e.g. 30 424 or 16 St, Manchester'. There is a 'Go' button and a link to 'Use my current location'. Below the form, there's a section 'How to report a problem' with four numbered steps: 1. Enter a nearby UK postcode, or street name and area; 2. Locate the problem on a map of the area; 3. Enter details of the problem; 4. We send it to the council on your behalf. To the right of these steps is a 'Recently reported problems' section with a list of issues: 'Drain cover' (10:01 today), 'Very large and deep pothole near the bus stop going toward the shed garage' (10:21 today, last updated 10:21 today), 'Large dip / broken section between between road and pavement' (10:20 today, last updated 10:20 today), 'Leak Road, Mouldy' (10:20 today, last updated 10:20 today), and 'Abandoned Visual Cues' (10:20 today). At the bottom left, there are statistics: '19,986 reports in past week', '25,891 fixed in past month', and '6,658,394 updates on reports'.

Download on the  
**App Store**

GET IT ON  
**Google Play**

## Local agents, Local knowledge

Whether buying, selling or renting, we provide a personalised, professional and individual service to help make your move as smooth as possible. Speak to one of our friendly team today.



**01582 841 200**

[sales@towncountry.uk.net](mailto:sales@towncountry.uk.net)

1 Manor Road, Caddington, Bedfordshire, LU1 4EE

**Town &  
Country**



# SNIP ENDERS

Hair Salon Now Open  
Summer Street  
Slip End




For a free consultation or  
to arrange an appointment

Contact Rachel on  
07817315259






**HIGH ELMS**  
Tree Surgery Ltd

**01582 840144**  
**07939 623675**

[www.highelmstreesurgery.co.uk](http://www.highelmstreesurgery.co.uk)  
Email: [info@highelmsreesurgery.co.uk](mailto:info@highelmsreesurgery.co.uk)

- NPTC CERTIFIED
- POLLARDING
- RESHAPING
- STUMP REMOVAL
- HEDGES TRIMMED, SHAPED & REMOVED
- DEAD WOODING
- REDUCTIONS
- CROWN LIFTING
- LOGS DELIVERED
- TREE REMOVAL
- T.P.O. & PLANNING APPLICATIONS
- TREE SURVEY INSPECTIONS & REPORTS



**City & Guilds**  
**NPTC**

FREE Estimates & Advice  
Fully Insured to £10 million & Approved by Local Authorities

Herts, Beds, Bucks & London + we will beat any written quotation

Registered in England No. 5005475  
VAT Reg. No. 847 4261 52

**LAIRD MATT DESIGNS**

[WWW.LAIRDMATTDIGNS.CO.UK](http://WWW.LAIRDMATTDIGNS.CO.UK)

**YOUR LOCAL CREATIVE GENIUS**

- GRAPHIC DESIGN
- VIDEO EDITING
- PHOTO REPAIR (Old/damaged photos)
- PHOTO EDITING/RETOUCHING
- BUSINESS STATIONERY
- ONLINE FLIPBOOKS



[MATT@LAIRDMATTDIGNS](mailto:MATT@LAIRDMATTDIGNS)  
[@LAIRDMATTDIGNS](https://www.facebook.com/LAIRDMATTDIGNS)



**StotenGillam**  
chartered accountants  
chartered tax advisers

**99 High Street South**  
**Dunstable**  
**LU6 3SF**

**Tel: (01582) 608601**  
**[www.stotengillam.co.uk](http://www.stotengillam.co.uk)**



**ICAEW**  
CHARTERED  
ACCOUNTANTS



CHARTERED  
TAX ADVISERS

**"Practical  
Solutions for  
Growing  
Businesses"**





# AJB CONTRACTS

If you are looking for a local, reliable and trustworthy company, then please get in contact to discuss your project.

- Kitchens - design, supply & fit
- Bathrooms
- Carpentry
- House Refurbishment
- Building Works
- Garage Conversions
- Public Liability Insurance
- Over 35 years experience

 Find us on facebook



Alan Barton

M: 07802 294144 T: 01582 699324

E: alanbarton1@sky.com



**C & C MOTORS**  
WWW.CANDCMOTORS.ORG

OFFERING A FULL RANGE OF SERVICES  
INCLUDING:

-  Electrical & Mechanical Diagnostics
-  Servicing & Cambelts
-  Pre MOT & MOT Repairs
-  Brakes & Clutches
-  MOT Arrangement

NEWLANDS FARM, NEWLANDS ROAD,  
SLIP END, LU1 4BQ

01582 730 237 or 07966 253 184

WWW.CANDCMOTORS.ORG

## DID YOU KNOW..

The Parish News is delivered to over 950 households each and every month.

Advertising space starts from just £37!

Contact us today.



Advertise **YOUR**  
local business here.

Contact Jo Moss

01582 484373

parishadverts@gmail.com

*A warm welcome always awaits members and their families at...*

# Slip End

## SOCIAL CLUB

*Be social, make it your local!*

**BIG SCREEN  
LIVE SPORTS**  
sky SPORTS BT Sport  
**DARTS**  
**FREE POOL**  
Monday to Friday only  
**DOMINOES**  
**CRIBBAGE**  
☺ **HAPPY HOUR** ☺  
Monday to Friday 4-7pm  
**BINGO WEDNESDAYS**

**LIVE ENTERTAINMENT  
EVERY MONTH**  
**GOLF SOCIETY**  
**FREE WI-FI**  
**USUAL CLUB PRICES**  
**OPENING TIMES**  
Weekdays: 4pm to 11pm  
Saturday:  
12 Noon to 12 Midnight  
Sunday: 12 Noon to 11pm



TOP BAR



BIG SCREEN SPORT



SNUG BAR



DARTS IN ALL BARS



TOP BAR POOL TABLE



*John Saunders & Son*

*Funeral Directors dedicated to providing traditional client care.*

*Because we believe that every funeral should be as unique as the person that it's for*



FUNERAL PLANS FROM  
**Golden Charter**  
Smart Planning for Later Life



*Please call us for an informal chat or to ask any questions on 01582 731696  
or visit our website [www.johnsaundersandson.co.uk](http://www.johnsaundersandson.co.uk) to learn more about us.*



## Gardening Notes

by *Russell Sprout*

It's been another wet winter, but hopefully by the time you are reading this the ground will be drying out, although at the time of writing it is still quite cold. Don't be too eager to sow your seeds, if the ground is too cold they won't germinate. Nevertheless we should be able to get on with some jobs that need doing.

Complete pruning of roses as soon as possible and apply fertilizer at approximately a handful to the square yard, but leave a six inch circle around the actual plant itself, and hoe into the surface. After a good downpour mulch around the plants with a one inch layer of manure or bark chippings to hold moisture. Still time to repair impoverished lawns this month, a light mowing followed by scarifying and then aerate to improve drainage. Over-seed any bad areas and rake in well, apply a spring fertiliser and level any bumps or hollows.

Mulch beds and borders when they have warmed up, after destroying weeds with a hoe and making sure ground is moist. Ensure tender plants are protected from frost. Divide any large clumps of herbaceous plants that are unsightly and replant the outer, strongest shoots, discarding the middle weaker ones. Rhododendrons and azaleas can be transplanted if they need moving, or complete planting of any new bushes (water newly planted bushes if weather is dry). Remove dead heads of early flowering varieties. Dahlias started in boxes can be divided with a sharp knife, making sure that cutting has a bud or shoot on it. Carry on planting gladioli for a succession of flowers.

Many border annuals can be sown directly into the soil this month to provide a good display of colour and help to suppress weeds. Carnations and pinks will benefit from an application of fertilizer to established plants. Border plants should be planted by the middle of the month, tall growing varieties can be staked with twiggy sticks pushed into the soil so that the stems can grow up through them. Sweet peas sown in the spring can be planted out as soon as they are growing strongly.

Tomato plants can be planted in a cool greenhouse now. Sow seeds indoors for outdoor tomatoes to plant out when danger of frosts has passed. Sow melons and cucumbers in a propagator, prick out as soon as they are large enough to handle. Keep an eye on fruit trees and bushes as they start to blossom and take action against pests and diseases. As early potatoes start to shoot from the middle of the month protect the leaves from frost either by drawing the soil over them or cover them with straw or newspaper. Check rhubarb and remove any seed heads as soon as they appear, cut them off as near to the base as possible, if left the plant will stop producing edible sticks, they will become dry and woody very quickly.

Plant onion sets in shallow drills and just cover the tops to stop birds pulling them out. Salad crops can be sown as soon as the soil is dry enough to work into a fine tilth, but sow little and often, every 2-3 weeks, so that you get a continuous supply of crops such as lettuce, radish, spring onion and beetroot and harvest as soon as they are large enough to eat, don't wait to get large woody ones. Carrots can be planted this month, main crop can be sown the middle of next month, sow seeds of late summer cauliflowers and wrinkled, seeded varieties of peas, which will be ready for picking in approximately 12 weeks. Sow winter cabbages for planting out in June and set out summer cabbages sown last month.

The Gardening Club are holding an Open Gardens event this year for much needed funds, if you would like to open your garden please fill out the form on page 11. Your garden doesn't need to be a show garden, it is not a competition. If you would like more information please call Rosemary on 01582 423622.



1. The month of April is believed to be named after which Greek goddess?

- A. Artemis
- B. Athena
- C. Aphrodite

2. What is the birthstone of April?

- A. Garnet
- B. Blue Topaz
- C. Diamond

3. Which are the two possible signs of the zodiac for those people who are born in April?

- A. Capricorn and Aquarius
- B. Aries and Taurus
- C. Gemini and Leo

4. In which European country do people celebrate King's Day on April 27th every year?

- A. Sweden
- B. The Netherlands
- C. Spain

5. April 2 is the World Awareness Day of which mental condition?

- A. Depression
- B. Borderline Personality Disorder
- C. Autism

6. First organised in 1970, which annual event takes place on April 22 to raise people's awareness of environmental problems?

- A. Earth Day
- B. Earth Hour
- C. World Environment Day

# Sudoku

Sudoku is a puzzle based on a small number of very simple rules:

- Every square has to contain a single number
- Only the numbers from 1 through to 9 can be used
- Each 3×3 box can only contain each number from 1 to 9 once
- Each vertical column can only contain each number from 1 to 9 once
- Each horizontal row can only contain each number from 1 to 9 once

|   |   |   |   |   |   |   |   |   |
|---|---|---|---|---|---|---|---|---|
|   |   | 7 | 6 |   |   |   | 5 |   |
|   |   |   | 9 |   |   |   |   |   |
|   | 6 |   | 4 |   |   | 9 | 1 | 3 |
|   |   |   |   | 7 | 1 |   |   |   |
| 8 |   |   |   |   |   |   | 2 | 6 |
| 4 |   | 3 |   |   |   | 8 |   |   |
| 6 |   |   |   | 3 | 2 | 4 | 7 | 9 |
|   |   |   |   | 9 |   | 1 | 6 | 2 |
|   | 1 | 9 |   |   | 4 |   |   |   |

*Quiz answers and Sudoku solution on page 33*





Proud to be federated  
with Caddington Village School

# Slip End VILLAGE SCHOOL

As the end of spring term comes to a close the evidence of growth is all around. The same can be said for Slip End Village School. If I had to define this jam-packed term, I would say, "Development and Vibrance".

As I walk through the classrooms of the school, I see a real sense of what we set out to do at the start of the year: to raise standards. The quiet determination and resilience of the learners of the school, coupled with the persistence and drive of the teachers, is fuelling this. Add in the additional resources that the school and PTA have funded, and we are beginning to see shoots of growth towards raising the attainment of all learners.



All of this wouldn't be possible without the children's emotional regulation and mental wellbeing being at the forefront. This term we have had a plethora of enrichment opportunities to support this. From Wellbeing Champions 'peer mentoring' training, to an abundance of sporting events and activities across the year groups, we have been providing opportunities to enrich children's learning beyond the classroom.



Furthermore, as the days are getting longer, the chance to go on offsite visits is jumped upon. This term, Year 2 have headed to Caddington Village School to take part in a history workshop; Year 4 have hopped on to the coach and visited the Natural History Museum in Tring; and Year 6 have been cooking up a storm in the Food Technology Room at our federated school.

We look forward to a bustling, driven summer term and we can't wait to share this with you in the July edition.

**Mr Andrew Young**  
**Head of School**  
**Slip End Village School**

📍 Rossway, Luton, Bedfordshire. LU1 4DD

☎ 01582 720152

✉ [office@slipendschool.org](mailto:office@slipendschool.org)



Most pharmacies can help you  
with **seven common conditions**  
without needing a GP appointment



## ■ Sinusitis

(adults and children aged 12 years and over)

## ■ Sore throat

(adults and children aged 5 years and over)

## ■ Earache

(children and young adults aged 1 year to 17 years)

## ■ Infected insect bite

(adults and children aged 1 year and over)

## ■ Impetigo

(adults and children aged 1 year and over)

## ■ Shingles

(adults aged 18 years and over)

## ■ Urinary tract infection

(women, aged 16 to 64 years)



Ask your pharmacy for more  
information about this  
free\* NHS service

**Visit your  
Pharmacy First!**

\*NHS prescription charge rules apply where a medicine is supplied





# St Andrew's Woodside Community Coffee Morning



**Saturday 27th April**  
**10.00 am to noon**  
**at St Andrew's Church**

Tea, coffee, conversation and good company  
We will have jigsaws and books for sale,  
plus amazing artwork from Paula.  
10% of sales from Paula's art and cards will go to Cancer Research.

**Drop in at any time. All welcome.**

**Contact Julie on 413912 if transport is a problem.**

## Chiropodist

*State Registered*

**Home visits Evening &  
Weekend appointments**

*Keith Appleby BSc (Hons), MChS, SRCh*

**Telephone: 01582 873136**

**A. McClelland  
Pest Control**



For fast response call  
Mobile 0777 494 8415  
or office 01582 872158

email: amcclellandpestcontrol33@gmail.com

**Charisma**

## **Hair & Beauty Salon**

**Ladies &  
Gentlemen  
01582 722801**



### **Opening Times**

Mon: Closed  
Tues: 9-5  
Wed: 9-1  
Thurs: 9-7  
Fri: 9-6  
Sat: 8-3

*Easy Parking!*

43B Elm Avenue, Caddington  
[www.charisma-caddington.com](http://www.charisma-caddington.com)



*Find us on facebook*



**Need a reliable  
Window &  
Carpet Cleaner?**

*We operate in the  
Slip End area  
For free quotation  
contact us on  
01462 629302  
07970 406 926*

## Richard Gurney & Son Contracting Services

Longview, Luton Road, Markyate

*Tree Surgeons & Fencing Specialists  
Hedge Trimming & Tree-stump removal  
Wood Chippings (good for mulching)  
Logs for Sale*

**Tel. (01582) 840407**

*Established 1970 - Fully Insured*

## Hydrotech Plumbing

Your local plumbing and heating engineers:

- Boiler breakdown and servicing
- New Boiler installation
- Landlords gas safety certification
- Gas fire installation and servicing
- All gas and plumbing work undertaken
- Fully insured
- Free quotations

MARKYATE based company

**01582842889 07932796632**



## P H SERVICES

CAR & MOTORCYCLE REPAIRS  
PHILIP HALL  
MECHANIC

4 Servicing 4 Bodywork  
4 Tyres 4 MOT  
4 Computer Diagnostics



**UNIT 3  
MANOR ROAD GARAGE  
CADDINGTON**

Office: 01582 722251  
Mobile: 07769 734417

Damaged bikes wanted for Cash  
Nationwide collection  
e-Mail: philhall1200@btinternet.com



**10% Discount with this voucher!**

## STROBE ELECTRICS

**ELECTRICIAN**

**NIC APPROVED**

ESTABLISHED 25 YEARS

**House Rewires Part P REG**

**No Job Too Big or Small**

**For a job well done**

**Quality Assured**

**Call Graeme**

**01582 451442 or 07956 570692**

**Problems  
with your  
PC or  
Apple-mac?**



*For expert advice & trouble shooting  
call Tony Glynos, 458353 or 07792 653264  
[tonyglynos@outlook.com](mailto:tonyglynos@outlook.com)*

**Karen Jordan**

**07970487338**

**Grass Cutting**

**Weeding**

**Strimming**

**General Tidying**

*Friendly*



*Reliable*

*Local*

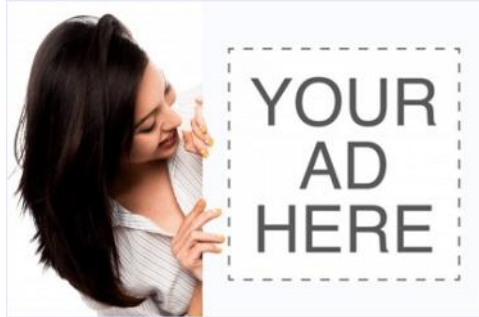
## PILATES IN SLIP END

Tuesday morning, Peter Edwards Hall 9.30am  
Wednesday evening, Slip End School 7.30pm

All ages & levels catered for. Come & try, first class free.

Introducing the Pilates Reformer Machine. Ideal for rehabilitation after injury or surgery. Perfect for sport specific training, Pre & Post Natal & general fitness.

For more information contact 07811343566 or  
email:- [golf58.ag@gmail.com](mailto:golf58.ag@gmail.com)





# Slip End Parish Council



## DD Celebrations – 8<sup>th</sup> June 2024 Village Hall – Slip End

### Remembering D-Day and the Battle of Normandy

The D-Day landings of 6<sup>th</sup> June 1944 was the largest seaborne invasion in history. Along with the associated airborne operations, it marked the beginning of the liberation of France and western Europe.

**Slip End Parish Council** is organising an afternoon tea event for the residents of Slip End, Woodside, Aley Green and Pepperstock on Saturday 8<sup>th</sup> June 2024 to mark the 80<sup>th</sup> Anniversary of D-Day. It will be a tea party with music of the time and information about D-Day and War on the Home Front. Dressing up is optional.

We need some help from residents, to volunteer to help organise / run the event.

We also would like to hear from anyone who has any family stories or photographs of war time in the parish of Slip End which they are happy to include in our War on the **Home Front Display**.

We want it to be a great event, everyone is invited, so please save the date in your diaries.

I intend to hold a meeting for all those who are interested in helping and I will let you know the date as soon as I have numbers. I look forward to hearing from you.

If you can help, please contact me:

Clerk: Tracey O'Neill – [clerk@slipendparishcouncil.co.uk](mailto:clerk@slipendparishcouncil.co.uk)

Contact: 07487 805249



## Little Singing Stars are back!

St Andrew's is going to be hosting **Little Singing Stars** again. This is a different offer to our regular Little Stars, which we view as Christian worship, since it includes a Bible story, Christian songs and prayers.

Little Singing Stars is all about the singing and musical movement for little ones, led by Catherine Hazell, a local child minder.

**Time:** 10am to 11am

**Day:** Monday

**Dates:** 15th April, 29th April and 13th May

There is a suggested donation of £2 towards refreshments and heating.



## ALL ABOUT

**PLANNING**



### Planning applications received within the Parish Since February 2024

#### **Application CB/00447/LDCP submitted 20th February 2024**

47 Woodside Road, Woodside. LU1 4DJ

Lawful Development Certificate Single Storey rear extension.

**Decision:** Lawful dev-Proposal-Granted

For further information on applications visit  
[www.centralbedfordshire.gov.uk](http://www.centralbedfordshire.gov.uk) >view planning applications.

If you wish to comment on an application email:

[planning@centralbedfordshire.gov.uk](mailto:planning@centralbedfordshire.gov.uk)



**BUILDING & ROOFING Co.**

**EXTENSIONS - CONVERSIONS - RENOVATIONS**

- ✓ Restoration ✓ New Build
- ✓ Flat & Pitched Roofing
- ✓ All General Building Work
- ✓ Painting & Decorating
- ✓ Electrical Works & Plumbing
- ✓ Brickwork Contractors
- ✓ Patios & Driveways ✓ Fencing
- ✓ Groundworks/Drainage
- ✓ Insurance Work
- ✓ Garage Conversions
- ✓ Public Liability Insurance

**EXTENSIONS • CONVERSIONS • RENOVATIONS**

[www.inkermanbuilding.co.uk](http://www.inkermanbuilding.co.uk)

**The Complete Design  
Plan-Completion Service Included**



**Tel: 01727 835702 or Mobile: 07774 955255**

**Tel/Fax: 01582 876509**

Email: [info@inkermanbuilding.co.uk](mailto:info@inkermanbuilding.co.uk) • 46 Church Road, Slip End, Bedfordshire LU1 4BJ

## Why practice self-defence?



Join us for our NEW children's class starting 6.30pm on Thursday 1st June at the Lyons Community Centre - First Class free! Teaching children the essential skill of self-defence. Contact us on 07956 286930 to book your child's place.

Shinrai Martial Arts teaches Jujitsu and kickboxing giving you two Martial Arts styles in one club. These are just some of the benefits to people of all ages.

- Promotes physical fitness, strength and flexibility
- Builds confidence and awareness
- Learn potentially lifesaving skills
- Strong social aspect where many friendships can be made
- Discipline
- Lose weight
- Fun

Children (ages 6 - 15) Monday 6.15pm - 7.15pm  
Thursday 6.30pm - 7.30pm  
Women only (16+) Monday 7.30pm - 8.30pm

**TEASHA MITCHELL**

2ND DAN BLACKBELT JUJITSU  
1ST DAN BLACKBELT KICK BOXING

DBS CHECKED

NATIONAL BLACKBELT REGISTERED

MEMBER OF BRITISH MARTIAL ARTS AND BOXING ASSOCIATION



**Location:**  
Find us at the brand new Lyons Community Centre in Caddington Woods,  
33A Mallard Crescent,  
Caddington,  
Luton.

To book or for further information please email Sensei Teasha Mitchell  
[teasha@shinraimartialarts.com](mailto:teasha@shinraimartialarts.com)

**Find out all about us at [www.shinraimartialarts.com](http://www.shinraimartialarts.com)**  
Shinrai Facebook Page: Shinrai Martial Arts



*Slip End*  
SOCIAL CLUB

PRESENTS

RAFFLE AND...

# MUSIC BINGO



SATURDAY 27TH APRIL

7:30PM START

Hosted by Mrs R Events

*Slip End*

SOCIAL CLUB

*Be social, make it your local!*



01582 415804

Slip End Social Club, 13 New Street, Slip End, LU1 4BW

To celebrate D-Day celebrations on June 6th two of our ladies have made Poppies to add to the hundreds of poppies made around the country for this special day. Thank you Kay and Maureen.

Caddington W.I. helped with refreshments on 16th March at Heathfield for Clean Up Day.

The WI have a Learning Hub with Courses to help get ladies inspired. Look online for this on the WI website.

Members have bought Easter Eggs to be distributed to a local Charity.

We are thinking of places to visit during the summer, a day out on a coach. Tates Coaches have a good selection (*Ed: although other coach companies are available*).

On 3rd May there is a Group Meeting whereby our local Groups get together for an evening together. Speaker and the usual supper.

Our Speaker for this month was Evan Williston who was a Valuer and Auctioneer for many years at Woburn Antique Hall. Evan amused us with all his anecdotes and stories about antiques and his customers. He mentioned Charlie Ross the TV Auctioneer. He is in Bargain Hunt on the TV and recently Classic Cars in America.

Evan had a large black bag which we were asked to pick up, feel, and guess what it was! Right, what was in the bag? Nicki Moore guessed it.....it was a Vintage stoneware foster mother for feeding piglets/lambs Rubber teats are attached to the spouts around the bottom and then filled with milk. Evan was very surprised that someone guessed what it was! Well done Nicki - Evan presented her with a bottle of wine.

Our next meeting will be Tuesday 2nd April when we have a Craft Evening with Carol Hardy. I wonder what surprise she will conjure up for us.

Our meetings are getting busier. If you would like to join us, we meet on the First (1st) Tuesday of each month at 7.30 p.m. at Caddington Sports and Social Club in Manor Road Caddington. Come along and have a fun and interesting evening with us.

**Carol Jones 07899 794422**

**Linda Edwards 07761 340108**

**Sign up today**

## **Garden waste subscription service**

**£55**  
per bin



The garden waste service is an opt-in chargeable service available to all Central Bedfordshire residents.

From 1 April 2024, if you would like us to collect your garden waste, you will need to subscribe and pay £55 per bin, per year (1 April 2024 – 31 March 2025).

Once subscribed, we'll collect your garden waste fortnightly between now and December, and then resume collections from late February to the end of March 2025.

If you do not subscribe to the service and no longer need your garden waste bin, please keep your bin at your property in case you decide to subscribe at a later date or if a future tenant of the property wishes to use the service. We will not automatically remove the bin if you do not sign up.

If you do not subscribe to our collection service, you can take your garden waste to one of our four Household Waste Recycling Centres free of charge. Our recycling centres are open 7 days a week, 9am-5pm. [Find your nearest recycling centre.](#)

Alternatively, those with enough space in their garden are encouraged to home compost.

If you no longer wish to receive collections, your garden waste bin collections will stop at the end of March 2025, and you will not need to take any further action. If you decide to stop using the service part way through a subscription year, you do not need to tell us.

There are no refunds or part refunds for the cancellation of the service part way through the year.

*Ed: The above is taken directly from the Central Bedfordshire Council Website and has been added here for your information only. The Parish News are in no way affiliated, associated, authorized or endorsed by Central Bedfordshire Council.*



## CRIME STATS FOR FEBRUARY 2024

### ALEY GREEN

- None

### PEPPERSTOCK

- None

### SLIP END

- Theft of Unauthorised taking of a Motor Vehicle - 2
- Threats to kill - 1
- Interfering with a Motor Vehicle - 1

**Total – 4**

### WOODSIDE

- None

### CADDINGTON

- Interfering with a Motor Vehicle - 2
- Shoplifting – 2
- Theft of Unauthorised taking of a Motor Vehicle – 1
- Race or Religiously Aggravated Harassment – 1
- Threats to kill – 1
- Public Fear Alarm or Distress – 1
- Stalking – 1

**Total – 9**

*Diary - If you would like your events included, please contact the Editor*

### What's going on in 2024

**Weekly** Soup and a Sandwich Tuesday 12-2pm Rising Sun—see poster p5  
**Weekly** Chatty Club every Wednesday Rising Sun 2pm—4pm

#### April

**Mon 8th** Parish Council Meeting Village Hall 7pm  
**Sat 27th** St Andrew's Coffee Morning 10am St Andrew's Church  
**Sat 27th** Music Bingo 7:30pm Slip End Social Club

#### June

**Sat 8th** D-Day Tea Party Village Hall  
**Mon 17th** Gardening Club Village Hall 8pm (see page 10)  
**Sat 29th** Open Gardens (see page 11)

#### July

**6th July** Slip End Village Day

#### April Quiz answers:

1:C, 2:C, 3:B, 4:B, 5:C, 6:A

|   |   |   |   |   |   |   |   |   |
|---|---|---|---|---|---|---|---|---|
| 1 | 9 | 7 | 6 | 8 | 3 | 2 | 5 | 4 |
| 3 | 4 | 2 | 9 | 1 | 5 | 6 | 8 | 7 |
| 5 | 6 | 8 | 4 | 2 | 7 | 9 | 1 | 3 |
| 9 | 2 | 6 | 8 | 7 | 1 | 3 | 4 | 5 |
| 8 | 5 | 1 | 3 | 4 | 9 | 7 | 2 | 6 |
| 4 | 7 | 3 | 2 | 5 | 6 | 8 | 9 | 1 |
| 6 | 8 | 5 | 1 | 3 | 2 | 4 | 7 | 9 |
| 7 | 3 | 4 | 5 | 9 | 8 | 1 | 6 | 2 |
| 2 | 1 | 9 | 7 | 6 | 4 | 5 | 3 | 8 |

#### Parish News Online

For those who like to read magazines on tablet / screen, Parish News can be found online at:-

[www.slipendparishcouncil.co.uk](http://www.slipendparishcouncil.co.uk) and  
[www.slipend.co.uk](http://www.slipend.co.uk) where historical copies can also be found.

### Bin Collections - April

Orange - 5th, 19th April

Black bin and Glass - 12th, 26th, April

Food Waste bin - Every Friday

Green - 5th, 19th April (Only if you have subscribed for collection)





## COMMUNITY AND SERVICES

### Services:-

**Shop at the Crossroads** 401069 Mon—Sun 7.00 to 21:00

**Slip End Garage** Markyate Road, 456888

**Doctor** Caddington Surgery 725673

**Doctor** Markyate Surgery 841559

**Pharmacy** Medigreen, Caddington 457800

**Good Neighbour Scheme:** 07513 37 24 15

**Schools:** **Slip End Village School** 720152

**Manshead** 679400

**Caddington Village School** 726058

**St Mary's Catholic Primary** 602420

### Churches:-

**St Andrew's Church**

**Rev Nick Mwandia**

01582 253537

07398663729

[revstandreww@gmail.com](mailto:revstandreww@gmail.com)

**Julie Taylor (Reader)**

01582 413912

Mob 07841482119

[duncan.taylor@btinternet.com](mailto:duncan.taylor@btinternet.com)

**Wardens:**

**Steve Baird** 738205

**Aley Green Methodist Church.**

**Minister:**

**Rev Nigel Bibbings**

**Senior Steward:**

**Ann Meader** 733668

### Sport:-

**Bowling Club** 412506

**Football**

517042 or 07515687160

[wayne@dngsales.co.uk](mailto:wayne@dngsales.co.uk)

**Pepperstock Archers**

07914 381847

Email

[targetsports@virginmedia.com](mailto:targetsports@virginmedia.com)

m (Chris Ingram)

**Tennis** 733253

**Runners** Peter Barber

07587 89260.

**Slip End Veterans Football**

Wayne Leslie (see football)

**Line Dancing** —Jean

Anderson 01582 2603030

### Community:-

**Gardening Club** 423622

**Brownies** 723109

**Beavers,**

**Cubs & Scouts** 418014

**Pre-School** - Hayley

Bolton- 07889824367

**FoSELS** 07810002942 PTA)

or [fosels@outlook.com](mailto:fosels@outlook.com)

**Women's Institute** 01582

737036

**Chatty Club** Jean Turner 01582

421304 or Cathy Rose 01582

457362

**Book Club** (contact via

Parish News)

**CaSeBuG (Caddington and**

**Slip End Bus user group).**

[info@casebug.org](mailto:info@casebug.org)

[www.slipend.co.uk](http://www.slipend.co.uk)



[Slipendparishcouncil.co.uk](http://Slipendparishcouncil.co.uk)

**Items for the next issue (May) to us by 15th April 2024**

**(Editor — John) Adverts by 10th please**

Any delivery problems? Contact Alan Buttery at 1 Claydown Way

(01582 724527), [alanjan4546@gmail.com](mailto:alanjan4546@gmail.com)

Anything interesting to report about village activities, photos, holidays, etc.

Please contact us, letters and e-mails are encouraged.

Views expressed by our contributors are not the Editors' own.

Articles should be sent by the 15th of the preceding month to the Editors - John Larsen

1 The Grove, Woodside Park or Matt Freeman 20 Crawley Close

or e-Mail [parishnews@slipend.co.uk](mailto:parishnews@slipend.co.uk)

Advertising queries to Jo Moss 01582484373 or [Parishadverts@gmail.com](mailto:Parishadverts@gmail.com)

Parish News is grateful to our advertisers for their contributions. Please support them.

Printer - Jiffy Print, Luton

## YOUR PARISH COUNCILLORS

Clerk to Parish Council — Tracey O'Neill 07487 850249 (9am to noon weekdays)  
[clerk@slipendparishcouncil.co.uk](mailto:clerk@slipendparishcouncil.co.uk)

|                                                                                                                      |                         |
|----------------------------------------------------------------------------------------------------------------------|-------------------------|
| Sarah Minnighan - <a href="mailto:s.minnighan@slipendparishcouncil.co.uk">s.minnighan@slipendparishcouncil.co.uk</a> | 07868 742904 (Chairman) |
| Carol Beeton - <a href="mailto:c.beeton@slipendparishcouncil.co.uk">c.beeton@slipendparishcouncil.co.uk</a>          | 405597                  |
| Carol Brennan - <a href="mailto:c.brennan@slipendparishcouncil.co.uk">c.brennan@slipendparishcouncil.co.uk</a>       | 07979 402847            |
| Simon Patterson - <a href="mailto:s.patterson@slipendparishcouncil.co.uk">s.patterson@slipendparishcouncil.co.uk</a> | 07767 615714            |
| Paul Shaw - <a href="mailto:p.shaw@slipendparishcouncil.co.uk">p.shaw@slipendparishcouncil.co.uk</a>                 | 07957 188947            |
| Steve Baird - <a href="mailto:s.baird@slipendparishcouncil.co.uk">s.baird@slipendparishcouncil.co.uk</a>             | 01582 738205            |
| Stuart Durdell - <a href="mailto:s.durdell@slipendparishcouncil.co.uk">s.durdell@slipendparishcouncil.co.uk</a>      | 07527 389531            |

## GOOD NEIGHBOUR SCHEME (GNS) 07513 37 24 15

### WHO DO I CALL?

**Fly Tipping (CBC)** 0300 300 8000 [Customer.Services@centralbedfordshire.gov.uk](mailto:Customer.Services@centralbedfordshire.gov.uk)  
**Road issues:-** [www.centralbedfordshire.gov.uk/reportit](http://www.centralbedfordshire.gov.uk/reportit)

**Police** 101      **Aircraft noise** 395382 or [noise@ltn.aero](mailto:noise@ltn.aero)

**Airparks** 393321      **Water leaks** 0800 3765325      **Cold Calling** 0345 4040506

**Out of hours noise** 0300 300 8098      **Street Lighting** 0300 300 804

### Your Central Beds Councillors



Cllr Kevin Collins



Contact details



Cllr Vicky Malone

[kevin.collins@centralbedfordshire.gov.uk](mailto:kevin.collins@centralbedfordshire.gov.uk)

[councillorvicky@gmail.com](mailto:councillorvicky@gmail.com)

### MP's

**Contact details**  
**Rachel Hopkins**



*Her local office is located at:  
3 Union Street Luton LU1 3AN  
For advice, surgery appointments  
call 01582 457 774*

### SLIP END VILLAGE HALL

*Your Village Hall*

for Dances, Receptions & Parties  
Facilities for the disabled

*For bookings contact  
[villagehall@slipendparishcouncil.co.uk](mailto:villagehall@slipendparishcouncil.co.uk)  
or Gill Plummer on 01582 723109*

### PETER EDWARDS HALL & PLAYING FIELD

Ideal for children's & adult's parties, meetings, etc.

Kitchen facilities with catering service available

Available for various sports activities

Excellent sports changing facilities

Facilities for the Disabled

For Bookings: please contact

[PEHall@slipendparishcouncil.co.uk](mailto:PEHall@slipendparishcouncil.co.uk)

## ESTABLISHED 1939



### NEW SALES



We always have great offers available including high deposit contributions, upgrade packages, free service packs and highly competitive finance options.

To find out more about our latest offers, visit us online or call our sales department now.



### USED SALES



Here at Slip End Garages we have a fantastic choice of used cars for sale. Our stock is always changing and currently includes used Citroën, Subaru and Isuzu vehicles.

We are always updating our website with our current stock visit us online or call now.



### PARTS



Whilst being one of the largest Citroën Dealerships in the Home Counties we also have one of the largest supply of vehicle parts and accessories available.

Whatever you need, we are here to help, just give our parts department a call.



### SERVICE



We have over 73 years of Vehicle maintenance experience with a full collection and delivery service available to our customers as well as provide courtesy cars for service and MOT.

Call our service department and we will take care of all of your service requirements.

**LOCAL RESIDENTS RECEIVE A FURTHER £200 DISCOUNT ON ALL NEW AND USED VEHICLES + SPECIAL RATES ON ALL SERVICING**

## Slip End Garages 01582 456888

Markyate Road Slip End, Luton, Bedfordshire, LU1 4BU

Our Service Centre is located in Grove Road, Slip End

Email: [info@slipendgarages](mailto:info@slipendgarages)

**WWW.SLIPENDGARAGE.CO.UK**