

**May
2024**

**Parish
News**

**Aley Green Pepperstock
Slip End Woodside**

**THE COMMUNITY MAGAZINE FOR YOU!
WITH INFORMATION AND NEWS FROM YOU**
delivered to the whole of the Parish

12:23 18/APR/2024

Editors' Notes

Hello all, this is my second go at editorship and I hope you are happy with my efforts.

In my first edition (March) I mentioned that I suffered with a Genetic Disorder which then caused me to become a Type II Diabetic, but did not mention the disorder. If you would like to know more, understand or learn about my very restrictive diet, please read the article on page 4, where I explain the disorder, the symptoms, my diet and the problems caused by it.

Proof Readers

Following our advert in last months magazine, I am pleased to say we have had 6 volunteers offering their assistance. As a result we will be setting up a rota so that we do not rely on the same people. Matt and I would like to thank those who volunteered their time. Don't forget, everybody who works on this publication is a volunteer.

CaSEBUG

Recently I was talking to a member of CaSEBUG and on discovering that they did not have anyone from the Slip End Area on the group, I volunteered myself to join. Unfortunately, at their last meeting they decided to decline my offer. As a result, I fail to see how they can call themselves the Caddington and Slip End Bus Users Group, as there is no one from Slip End and they are all from Caddington.

Gardening Club

The gardening club is still looking for people to open their gardens, please see pages 10.

Radio 1 Big Weekend at Stockwell Park.

Please see the Parish Council report on page 6 for more information.

Finally, as I write this, the weather has warmed up, but according to the weather forecasters, is likely to turn cold and wet again. Lets all hope for a decent summer.

Have a great May.

POLICE and CRIME COMMISSIONERS ELECTION

This is being held on **Thursday 2nd May** to elect the Police and Crime Commissioner for the Bedford area.

There are 4 candidates standing for this position, they are:-

Waheed Akbar.
Workers Party.

Festus Akinbusoye.
Conservative Party. (Current PCC).

Jasbir Singh Parmar.
Liberal Democrat Party.

John Tizard.
Labour and Co-operative Party.

Their manifestos can be read on www.choosmypcc.org.uk

In order to vote you will need to have to produce one of the following documents:

A Passport issued by the UK, any of the Chanel islands, the Isle of Man, a British Overseas Territory, an EEA state or a commonwealth country.

A driving licence issued by the UK, any of the Channel Islands, the Isle of Man or an EEA state.

A biometric immigration document.

An identity card bearing the Proof of Age Standards Scheme hologram (A PSS Card).

An Older Person's (Senior) Bus Pass.

A Blue Badge.

For more information telephone 0300 300 8008 (local call rate) or

Email:- electoral.registration@centralbedfordshire.gov.uk

www.centralbedfordshire.gov.uk

MY GENETIC PROBLEM.

by John Larsen (Editor).

Familial Chylomicronaemia Syndrome (FCS) is the overarching name given to a condition caused by faults on a number of different genes. My particular version is lipoprotein lipase deficiency (LPLD). FCS is caused when both parents have one faulty gene, but don't have the condition themselves – so are 'carriers'. Each child they have between them has a one in four chance of inheriting both of the faulty genes which gives them FCS. I have a younger brother and 2 younger sisters and only my youngest sister and I have this problem.

To explain, basically when you eat fat, the fats are turned into Triglycerides in the blood stream and the pancreas releases the Lipase Enzyme which turns the Triglycerides into energy for the cells. This enzyme has 4 parts, so if 1 part is faulty, this reduces you ability to assimilate fat. In my case 2 parts of this enzyme are faulty, so as a result I have to live on a very low fat diet of 10 grams of fat per day or less.

As those of us with FCS do not have the enzyme to break down dietary fat, or what enzyme we have do not work properly, when we eat fat (and this is any type of fat) it goes into our bloodstream as triglycerides which clump together as chylomicrons. The chylomicrons stay in our blood, making it milky white and causing many symptoms, including severe abdominal pain and pancreatitis – which can be life threatening. Symptoms I have experienced include upset stomachs, diarrhoea, tiredness, brain fog, breathing problems and pancreatitis, for which I have been hospitalised 6 times. In addition, damage to the pancreas (which produces insulin), plus a diet high in carbohydrate and sugar, raises the risk of developing diabetes and both my and I sister now have that condition as well.

To manage symptoms, patients are recommended to eat between 15g-20g fat per day, to limit added sugar and drink no alcohol. I find that to manage my symptoms I need to eat around 10g fat per day.

To put that in context a Mars Bar is 8.5 grams of fat, a standard slice of white bread between 1.5 and 2 grams and a digestive biscuit 2.5 grams.

The only way to confirm you have FCS is for your doctor to order a blood test to measure triglycerides. Normal triglyceride levels are around 1.79 mmol/L, whereas someone with FCS frequently has levels 10 times higher or more. As there can be a number of causes for high triglycerides (including excess alcohol), a genetic test confirms the diagnosis.

FCS used to be thought of as very rare, affecting one in a million, but as the condition has become better known, this number has been revised to anywhere between one in a hundred thousand to one in a million. The definition of a rare disease is one in two thousand, so it is still pretty rare!

I was 11 years old when I was diagnosed with LPLD and 50 when diagnosed with Type II Diabetes. There is a charity for people with this condition, called ActionFCS www.actionfcs.org. It gives much more information on the condition, and there are profiles of myself and fellow patients as well as lists of foods to be avoided and recipes for patients by patients.

Finally, on the first Friday of November every year the charity holds the FCS 10g Fat Challenge, when we challenge people to eat less than 10g fat for the day. This year it will be on Friday 1st November. I will publicise this more nearer the time and hope you will take the Challenge!

Thanks for reading.

The Good Neighbour Scheme
& St Andrews Church

Soup & a Sarnie

At The Rising Sun

Tuesdays 12.00pm to 2.00pm

~~~

7th, 14th, 21st and 28th May  
4th, 11th, 18th and 25th June

~~~

Quizzes & Bingo

~~~



£3 for soup & a sarnie  
& £1 for tea or coffee



If you need a lift call 07513 372415



# PARISH COUNCIL UPDATE

Councillors met on Monday 8th April 2024, with a long agenda to get through, but welcomed residents who attended with concerns over the Radio 1 Big Weekend. We were joined by Sam Allen from Harpenden Car-parks Group who are running two camping locations in the parish over the weekend. For those residents who don't know, the two locations are at Pepperstock on land owned by Mr Harper, and the garden at The Plough in Woodside. Sam answered residents' questions and concerns and is happy to speak with anyone who missed the meeting. Please contact the chairman for his details.

Our ward councillors Kevin and Vicky were on hand to bring us up to speed on their actions behind the scenes in opening up a line of communication between Central Bedfordshire Council and Luton Borough Council and discussions around road diversion routes and parking. There will be more to report on this event in the coming weeks.

As mentioned in the previous Facebook statement, I wholeheartedly encourage residents to email the Big Weekend Team at Luton Borough Council with any concerns and questions about the event.

Any further information the council receives will be posted on the Slipenders Facebook page and Slip End Parish Council website as we get them, but in the meantime be prepared for potential major disruption to the parish in terms of parking. Travel in the area could be difficult, bear it in mind, especially as the Herts Show runs on Saturday 25th and Sunday 26th May, the same weekend!

## **Flooding**

Grove Road is on Central Bedfordshire Councils works list to be attended to again, as it has been agreed that previous works have not improved that location. The sharp bend down from The Plough has a drainage pipe but it's been surveyed and is blocked, this is on the list to be cleared, which should then allow surface water from there to drain down to the overspill pond at Newlands Road. Finally works are about to start at the junction of Woodside Road and Mancroft Road to improve the catch pit and drainage there which will take surface water running down Woodside Road which it



# PARISH COUNCIL UPDATE

does not currently use due to its current state.

## **Fly Tipping**

Our hot spots appear to be back in use again, in particular Woodside Road and the farmers gateway entrance at Pepperstock. As usual the quickest way to get results on fly tips is to report them on FixMyStreet [www.fixmystreet.com](http://www.fixmystreet.com). Photos are always a bonus when you submit a report, along with as much info as you can. This is the quickest way to report ANY issues and means they get in the Central Bedfordshire system as quickly as possible.

## **Residents Parking Scheme**

There's been a new appointment for this at Central Bedfordshire Council. Cllr Collins has shown him the area and now we await information on the next stage.

Our next meeting is Monday 13th May 2024 at 7.00pm at the Village Hall.

Cllr Sarah Minnighan

Chairman - Slip End Parish Council

Tel: 07868 742904



# Slip End Preschool



Open Monday - Friday  
(Term time only)

🕒 9am - 3pm daily

📍 Slip End Village Hall

Children aged 1-4 years

- ✓ Extra-curricular activities
- ✓ High staff-child ratio
- ✓ 2, 3 and 4 year funded places
- ✓ Rated **GOOD** by Ofsted  
(September 2022)

For more information please contact  
**Hayley Bolton** on **07889 824367**

Central  
Bedfordshire



## GCSE ENGLISH TUITION

The exams are coming!

**One-to-one tuition for 15/16 year olds (or adults) preparing for GCSE English Language and/or Literature exams by experienced teacher, with exam board experience. At your home, or online.**

Tailored and personalised lessons  
Homework set and marked  
Exam practice

From £20 per hour.

Contact Lynn to arrange a consultation.  
Email: [gcseherecome@gmail.com](mailto:gcseherecome@gmail.com), with any queries  
or to arrange a free consultation.

To advertise here

Contact

Jo Moss 01582 484373

Or

[Parishadverts@gmail.com](mailto:Parishadverts@gmail.com)

## TGB TREECARE LTD

### Tree Surgery &

### Powered Access Hire

WE SERVE BEDFORDSHIRE,  
HERTFORDSHIRE &  
SURROUNDING AREAS

FULLY  
INSURED

FREE  
QUOTATIONS

Based in Woodside, Near Caddington, Luton, Beds.

07721 032669 | 01582 410 597  
[info@tgbtreecare.co.uk](mailto:info@tgbtreecare.co.uk)  
[www.tgbtreecare.co.uk](http://www.tgbtreecare.co.uk)







## Aley Green Methodist Church



### Dates for May

Sat 4th May 10am Prayer Breakfast

Sun 5th May 10:30am Morning Service led by Steve Rogers & Sunday School

Tues 7th May 10– 12am Cakes and Company and Little Lambs Club (Story time 10:30am)

Sun 12th May Ecumenical Christian Aid Service at All Saints Caddington 4pm

Sat 18th May 10am—1pm Allotment Plant Sale. The hut Folly Lane, Caddington. Church members are also running a cake stall and usually sell preserves made from produce grown on our allotments.

Sun 19th May 10:30am Morning Service led by Rev Nigel Bibbings with Holy Communion and Sunday School

Sun 26th May 10:30am Morning Service led by Colin Quine

Wed 29th May 7:30pm Coffee Evening in aid of Christian Aid.

Sat 1st Jun 10am Prayer Breakfast

Sun 2nd June 10:30am Morning Service

Future date:- Sun 7th July Open Air Circuit Worship at Dunstable Downs

12th—18th May is Christian Aid Week, so the fund raising coffee evening this month will be for that charity which does great work for those in poverty around the world.

The coffee evening in March raised over £100 for A Rocha UK, the charity that promotes Eco Church among other projects.

A large number of friends from all the churches in Slip End, Aley Green and Caddington took part in the Walk of Witness on Good Friday carrying the Cross and stopping for a moment of worship at each Church along the way.

Everyone is welcome to join any of our services and activities. You will be given a warm welcome.

Sunday School and Little Lambs Club will always be happy for new members to come along and see what we do. Little Lambs Club welcomes those with babies or toddlers to join for stories and craft. During school holidays older children are also very welcome to come along.

*God bless,  
from all at*

*Aley Green*



## GARDENING CLUB

At the last meeting the Speaker Julie Hayes gave an interesting talk on Hedgehog Rescue. Julie cares for a number of injured hedgehogs in her home. Most of us see more squashed dead hedgehogs than live ones. Their natural defence mechanism - rolling in a ball – is no protection against road traffic. So please drive carefully especially at night to avoid any hedgehogs. If it is safe to do so, stop and assist the hedgehog to get across quickly but never take a healthy hedgehog away from its environment to somewhere you deem safer. Hedgehogs are the Gardener's friend as they keep garden pests under control. To encourage a hedgehog to stay ensure it has a fresh supply of water also leave a dish of good quality meaty hedgehog food, meaty cat food or dog food or cat biscuits.

Provide a safe environment in your garden. Ensure there is not a hedgehog in a bonfire before lighting, keep any netting a foot above ground, provide an escape route if you have a pond and keep drain holes covered. If possible, create a 13x13cm, 15" x 5" square hole at the bottom of a fence to create a runway between gardens. More information on website.

[www.britishhedgehogs.org.uk](http://www.britishhedgehogs.org.uk).

### Open Gardens Event

The Club are trying to organise an Open Gardens event this year on **Saturday 29<sup>th</sup> June** from 11am to 4pm. **(See poster opposite page)**. It will only go ahead if we can get at least 8 gardens and some of those need to be new gardens, i.e. not having opened before.

PN Gardening Correspondent



Mon 17th June  
Village Hall, 8pm  
**Gardening Club**  
Guest Speaker -  
Maria Ellis  
"Low Maintenance Gardening"



New Members Welcome  
Guests/Visitors £2

# OPEN GARDENS 2024

Slip End hosted its ninth Open Gardens' Day in July 2022. There were ten gardens, which approx. 50 people visited. The extreme heat on the day contributed to lower visitor numbers than usual but a good time was had by all. It was also good to have five new gardens out of the ten which opened, and made for an enjoyable and interesting day for visitors. People gained ideas for their own gardens, also got to know/make friends with other people in the village.

We are now planning for the **2024 event on Saturday 29<sup>th</sup> June from 11am to 4pm**

Put the date in your diary now!! We are already looking for gardens, big or small and would emphasise that it is not a competition. Your garden does not have to be anything special; we just want you to be enthusiastic about it. You would be surprised how many visitors pick up ideas and tips from gardens. If you live in the Parish and would be interested in opening your garden, please complete details below and return **by the end of May to:-**

Rosemary Wickens, 86 Front Street, Slip End



*A selection of previous year's entries are shown above*

or e-mail

[rosemary@kididee.plus.com](mailto:rosemary@kididee.plus.com)

I would like to 'open my garden' on Saturday 29th June /  
I would like more information:

Name.....

Address.....

Telephone No. ....

## Message from St Andrew's



St Andrew's is joining in with a global prayer movement known as "Thy Kingdom Come". It involves around one million Christians from over 85 different denominations/traditions in nearly 90% of countries worldwide in 114 countries around the world. Here are some quotes from people cleverer than me.

*To pray is to share every part of yourself and your life with God. To pray together is to share our lives with God and in the work of God; moving closer to God, to each other and the world. Let us pray together "Thy Kingdom Come."* Dame Sarah Mullaly CBE, Bishop of London. *Celebrating Thy Kingdom Come, the Church proclaims Christ's hope to a world in need.* Bishop Jorge Pina Cabral, Bishop of the Lusitanian Church in Portugal.

For some people, prayer is a set of formal words, for others it doesn't even need words. My view is that we all find our own way to pray according to a) the context and b) our own spirituality. I'm best at "arrow prayers", i.e. a quick prayer when I need help, e.g. "Lord, help me find my keys!" But I'm attracted to silence too, sitting perhaps with some image or mindful colouring, and freeing my mind to let me hear God speak to me. Of course, each of us can do this at home or wherever we feel comfortable. However, we are creating a series of opportunities at church with prayers stations so people can explore different ways of praying and some short led prayer sessions

Thurs 9th 7.30 pm Ascension Day service

Fri 10th 7 pm Prayers for peace (30 mins led prayers)

Sat 11th 9.30 am Mary & Martha day from. (spring cleaning & prayer time)

Sun 12th 10.30 am Morning Praise – Jesus prays for his disciples

## St. Andrew's Church - Dates for May



Mon 13th 7-8pm Prayer stations open to explore

Tues 14th 10am - noon Prayer stations open

Tues network groups maybe meet together 2 pm

Weds 15th Little Stars as normal (topic = prayer)

Thurs 16th 7.30 pm Taize service (45 mins)

Fri 17th 9.30 am SEVS visit

10.30 am praying for our community (30 mins led prayers)  
Followed by a prayer walk around the parish, weather permitting

Sat 18th 9.00 am Prayer breakfast at (30 mins led prayers)  
Then Flower team to decorate church for Pentecost

Sun 19th 10.30 am Pentecost Holy Communion Service

Why not come and see if there is something for you?

Julie Taylor—Reader at St Andrew's



Little Stars starts at 10.30am each Wednesday. We will be running sessions on 1st, 8th, 15th & 22nd – but will be closed on 29th for the half term break (back again on 5th June!). The kettle goes on at 10am – turn up whenever suits your little one's routine.

Little Singing Stars

Little Singing Stars is not a worship service, as the name suggests it is all about singing. It runs Monday 10-11am in our Family Room. It will just run on one date in May (due to bank holidays) and that is Mon 13th May, then back again on Mon 3rd June.

## St Andrew's Church

For Little Stars, please see page 13.

We are pleased to confirm that the church building continues to be open! Most aspects are back to normal but we continue to designate an area at the back of church for those wishing to socially distance, and there are Covid security measures around the sharing of bread and wine at Communion services.

However if you would prefer to join the live service virtually, Nick has set up a Zoom link which is open to all. You can join by putting in the number 878 5926 2657 and the passcode 664663 to Zoom or by clicking the link

<https://us02web.zoom.us/j/87859262657?pwd=dTdada291VDk2anA5aGtmdnFCN3kzQT09>.

### Services held at St Andrew's:

May 5th - no service at St Andrew's - we will be worshipping at our sister church of St Paul's Luton at 10am.

May 9<sup>th</sup> (Thursday) 7.30pm: Ascension Day service

May 12th 10.30am: Morning Praise

May 19th 10.30am: Holy Communion for Pentecost Sunday

May 26th 10.30am: Family Service for Trinity Sunday

We are continuing with a monthly Family Service on the last Sunday of each month.

Of course all ages are welcome to every service, but the service content will be especially accessible to all generations at the Family Service.

Please see separate programme for prayer services for Thy Kingdom Come prayer events.

# Fed up with pot holes? Flooding? Litter?

The quickest and easiest way to report parish problems is via the **FixMyStreet** app.

Downloadable to Android or iPhone devices, you can create an account and then track the progress of the issue.

The screenshot shows the FixMyStreet website interface. At the top, there is a navigation bar with the FixMyStreet logo and links for 'Report a problem', 'Sign in', 'All reports', 'Local alerts', and 'Help'. Below the navigation bar, the main heading reads 'Report, view, or discuss local problems'. Underneath, there is a sub-heading 'Like graffiti, fly tipping, broken paving slabs, or street lighting'. A form prompts the user to 'Enter a nearby UK postcode, or street name and area' with an example 'e.g. 30 426 or 'The St, Manchester''. There is a 'Go' button and a link to 'Use my current location'. On the left, a 'How to report a problem' section lists four steps: 1. Enter a nearby UK postcode, or street name and area; 2. Locate the problem on a map of the area; 3. Enter details of the problem; 4. We send it to the council on your behalf. On the right, a 'Recently reported problems' section lists several issues with small images: 'Drain cover' (16/01 today), 'Very large and deep pothole near the bus stop going toward the shed garage' (05/21 today, last reported 05/21 today), 'Large dip / broken section between road and pavement' (05/20 today, last reported 15/20 today), 'Leak Road, Monday' (10/20 today, last reported 10/20 today), and 'Abandoned Visual Cops' (05/20 today). At the bottom left, statistics are shown: '19,986 reports in past week', '25,891 based in past month', and '6,658,394 updates on reports'.



## Local agents, Local knowledge

Whether buying, selling or renting, we provide a personalised, professional and individual service to help make your move as smooth as possible. Speak to one of our friendly team today.



**01582 841 200**  
sales@towncountry.uk.net  
1 Manor Road, Caddington, Bedfordshire, LU1 4EE

# Town & Country



# SNIP ENDERS

Hair Salon  
Summer Street  
Slip End

For a free consultation or  
to arrange an appointment

Contact  
Rachel or Kelye  
07817315259



## HIGH ELMS

Tree Surgery Ltd

[www.highelmstreesurgery.co.uk](http://www.highelmstreesurgery.co.uk)  
Email: [info@highelmstreesurgery.co.uk](mailto:info@highelmstreesurgery.co.uk)

**01582 840144**  
**07939 623675**

|                                                                                                                                                                                                                                                                                         |                                                                                                                                                                 |
|-----------------------------------------------------------------------------------------------------------------------------------------------------------------------------------------------------------------------------------------------------------------------------------------|-----------------------------------------------------------------------------------------------------------------------------------------------------------------|
| <ul style="list-style-type: none"> <li>• NPTC CERTIFIED</li> <li>• POLLARDING</li> <li>• RESHAPING</li> <li>• STUMP REMOVAL</li> <li>• HEDGES TRIMMED, SHAPED &amp; REMOVED</li> <li>• DEAD WOODING</li> <li>• REDUCTIONS</li> <li>• CROWN LIFTING</li> <li>• LOGS DELIVERED</li> </ul> | <ul style="list-style-type: none"> <li>• TREE REMOVAL</li> <li>• T.P.O. &amp; PLANNING APPLICATIONS</li> <li>• TREE SURVEY INSPECTIONS &amp; REPORTS</li> </ul> |
|-----------------------------------------------------------------------------------------------------------------------------------------------------------------------------------------------------------------------------------------------------------------------------------------|-----------------------------------------------------------------------------------------------------------------------------------------------------------------|







FREE Estimates & Advice  
Fully Insured to £10 million & Approved by Local Authorities

Herts, Beds, Bucks & London + we will beat any written quotation

## LAIRD MATT DESIGNS

WWW.LAIRDMATTDIGNS.CO.UK

**YOUR LOCAL CREATIVE GENIUS**

- GRAPHIC DESIGN
- VIDEO EDITING
- PHOTO REPAIR (Old/damaged photos)
- PHOTO EDITING/RETOUCHING
- BUSINESS STATIONERY
- ONLINE FLIPBOOKS



MATT@LAIRDMATTDIGNS  
@LAIRDMATTDIGNS



## Stoten Gillam

chartered accountants  
chartered tax advisers

**99 High Street South**  
**Dunstable**  
**LU6 3SF**  
**Tel: (01582) 608601**  
**www.stotengillam.co.uk**



**ICAEW**  
CHARTERED  
ACCOUNTANTS



CHARTERED  
TAX ADVISERS

*"Practical  
Solutions for  
Growing  
Businesses"*



16



# AJB CONTRACTS

If you are looking for a local, reliable and trustworthy company, then please get in contact to discuss your project.

- Kitchens - design, supply & fit
- Bathrooms
- Carpentry
- House Refurbishment
- Building Works
- Garage Conversions
- Public Liability Insurance
- Over 35 years experience

 Find us on facebook



Alan Barton  
M: 07802 294144 T: 01582 699324  
E: alanbarton1@sky.com



**C & C MOTORS**  
WWW.CANDCMOTORS.ORG

OFFERING A FULL RANGE OF SERVICES INCLUDING:

- ⚙ Electrical & Mechanical Diagnostics
- ⚙ Servicing & Cambelts
- ⚙ Pre MOT & MOT Repairs
- ⚙ Brakes & Clutches
- ⚙ MOT Arrangement

NEWLANDS FARM, NEWLANDS ROAD,  
SLIP END, LU1 4BQ

01582 730 237 or 07966 253 184

WWW.CANDCMOTORS.ORG

## DID YOU KNOW..

The Parish News is delivered to over 950 households each and every month.

Advertising space starts from just £37!

Contact us today.



Advertise **YOUR**  
local business here.

Contact Jo Moss  
01582 484373  
parishadverts@gmail.com

A warm welcome always awaits members and their families at...

# Slip End

## SOCIAL CLUB

Be social, make it your local!

**BIG SCREEN  
LIVE SPORTS**

sky SPORTS BT Sport

**DARTS**

**FREE POOL**

Monday to Friday only

**DOMINOES**

**CRIBBAGE**

☺ **HAPPY HOUR** ☺

Monday to Friday 4-7pm

**BINGO WEDNESDAYS**

**LIVE ENTERTAINMENT  
EVERY MONTH**

**GOLF SOCIETY**

**FREE WI-FI**

**USUAL CLUB PRICES**

**OPENING TIMES**

Weekdays: 4pm to 11pm

Saturday:

12 Noon to 12 Midnight

Sunday: 12 Noon to 11pm



*John Saunders & Son*

*Funeral Directors dedicated to providing traditional client care.*

*Because we believe that every funeral should be as unique as the person that it's for*



FUNERAL PLANS FROM  
**Golden Charter**  
Smart Planning for Later Life



*Please call us for an informal chat or to ask any questions on 01582 731696  
or visit our website [www.johnsaundersandson.co.uk](http://www.johnsaundersandson.co.uk) to learn more about us.*

## Gardening Notes *by Russell Sprout*

Hopefully by the time you are reading this the weather will have settled down and we will be having some warm, dry days so we can get on in the garden!

Daffodils, tulips and hyacinths will need dead heading as they finish flowering and if they need to be removed to make way for other plants replant them very close together out of the way and let them die back gradually.

Dahlias can be planted out from the third week of this month when we should be finished with frosts. Don't be too eager to put those bedding plants and hanging baskets out either for another week or two.

Hostas are in leaf now and will need some form of slug protection as they can devastate plants in a very short time. Be aware that slug pellets can be dangerous to other animals and don't scatter them where dogs or cats may try to eat them. There are several alternatives to slug pellets, you could try crumbled egg shells, the slugs get stuck to them and don't like it, a small bowl containing beer which they drink and then can't get out again, you can also use bran flakes (not the breakfast variety) which again they stick to and will avoid for that reason. Chrysanthemums can go in about the second week in May and stake tall varieties as you plant them. In the border pompoms and Koreans should be planted 12-18 inches apart in each direction, as these grow they will bush out and fill in the gaps.

Roses will come under attack and are best sprayed with a systemic insecticide which is absorbed by the plant and into the sap stream killing greenflies that feed on the sap. Alternatively spraying with soapy water will also get rid of greenfly but has to be done on a regular basis. Check for black spot or mildew and spray if necessary. Remove rolled up leaves containing tortrix caterpillar or sawfly grub and destroy (but don't put them in the compost heap). Gladioli need to be kept weed free and a good mulch 2 inches thick will keep the moisture as the plants depend on dampness at the roots to flower well. If you have any alpiners trim those which have flowered to prevent seeding and prolong flowering period.

Make further sowings of herbs such as chervil, dill, fennel, hysop and parsley for culinary use. Keep an eye on the weather and be ready to cover potatoes if frost is forecast. Erect runner bean frames and plant seed from the second week of the month. Marrows, courgettes, squashes and pumpkins can be sown outdoors from the third week of the month. French beans can be sown from the second week, continue sowing lettuce, beetroot and carrots for a fresh supply of tender young vegetables. Sweet corn can be planted towards the end of the month 1 ½ inches deep and 18 inches in each direction, preferably in a square to aid pollination.

A layer of grit in the top of flower pots will reduce the amount of water evaporating and lessen the amount of water required to keep plants healthy. Cut off dead flower heads and thin out weak shoots from shrubs that have finished flowering. Remove dead wood and thin shoots to keep old forsythias shapely.

Lawns will benefit from a light nitrogen feed at this time of year, it comes as liquid or granulated fertilizer and will give your lawn a lush green appearance. Make sure the blades are sharp on your mower and if the weather is dry leave about an inch of growth to stop the lawn from drying out and going brown. If planning a new lawn cultivate now, leave rough for the summer and sow in the autumn.

There's still time to help the Gardening Club by signing up to open your garden, details are in the parish news somewhere! That's all for this month, happy gardening!

Russell Sprout



**Just a reminder to save the date of this year's  
Village Day Saturday 6<sup>th</sup> July  
at the Playing Fields next to the church**

We are pleased to let you know that we have already booked a good variety of stalls, plus all the fun of the miniature steam train rides, archery, football darts and fair ground games . There will of course be the bbq and bar, tea and cakes and other refreshments and a visit from the ice cream van too. So come for lunch and stay to the end to enjoy all the activities.

The arena events are being planned now and will include a fun dog show, the mascot race and other entertainment to be announced in the next magazine and on facebook.

We do still need more help with the set-up for the event, manning activities on the day and clearing away at the end. Also we still have room for more stalls. For offers of help or to ask about a stall please call or message:-

**Tracey on 07810 002942 ,**

**Jill on 0795 8587595**

**or email [slipendvillageday@yahoo.com](mailto:slipendvillageday@yahoo.com)**

**More news next month !**



## Anyone for Tennis????

Slip End Tennis Club was formed in 1987 and is affiliated to the Beds Lawn Tennis Association. The Club has two hard courts, with flood-lights at Slip End Playing Fields, Church Road, Slip End. The courts have recently been refurbished and repainted.

It is a small friendly club with approx. 80 members. Current costs for new members are: Junior £15 (Up to age 16) Adult £35 and Family £60.

Club members have priority in the use of courts, except when either matches are to be played or coaching taking place.

Club night is on Wednesday evenings from 7pm, and Sunday mornings from 10.0am, to which all members are welcome. Coaching is provided by our LTA coach, Sally Parry. Seniors Tuesdays, 6.30-7.30pm and Juniors on Fridays, 4.30-5.30pm. Members £5 and Non-Members £6 per session. Ladies and private coaching is also available. Give Sally a call (07979 433688)

Any enquiries about the club can be made by telephone or e-mail to:

Steve Lyons, Secretary (01582 414162)

[stevesuelyons@aol.com](mailto:stevesuelyons@aol.com)

Peter Smith, Chairman (01582 733253)

[peter.smith813g@gmail.com](mailto:peter.smith813g@gmail.com)

# **Caddington Surgery**

## **Patients Participation Group (PPG)**

This group has been set up to assist the surgery in looking at the service delivered and identifying problems and help in resolving them. This includes access to the surgery by visits, internet access or telephone, doctor/nurse appointments etc. However we **cannot** and **will not** discuss any persons medical history or problems. We welcome new members and suggestions for improvements. If you are interested in joining or have a suggestion, please hand in your name, email and/or suggestion, in writing to reception.

### **Summary of the meeting held on 26th March at 1pm in the Surgery.**

We had a short discussion about the plans to extend the surgery. Applications for funding have been made, but until the outcome is known, there is nothing further we can discuss.

There was a short discussion about way of attracting additional members to join the group. We agreed to approach various local groups to see if we could attend a meeting to explain what we do and ask for volunteers.

We also agreed that we should keep the group to 7 members

The next meeting will be held on Tuesday 30th April at 1pm in the surgery.

John Larsen (Secretary) of the Patients Participation Group.

### **New Members**

We are still looking for new members, especially those with young children and so we can have a spread of ages represented in the group.

If you are interested, please leave your Name Phone Number and/or email with reception and we will get back to you.

For our April meeting, we had a craft theme. Carol Hardy prepared lots of bunny shapes for us to sew. She used a scotch material and a soft pink fleece. Three pieces, back, front and feet. We had to hand stitch the bunny together, add eyes, a nose and a scarf. Carol even provided cotton and needles with extra large eyes for the ladies to use. The made up bunnies looked good. There were no prizes.

St Georges Day was held on the 21st April at the Heathfield Community Centre. The W.I. provided the refreshments including bacon rolls, pizza, cakes and lots of other nibbles as well as coffee and tea. There was plenty of entertainment throughout the day including the Train and various stalls on the grass.

We are going to Totternhoe on May 3rd as Eaton Bray is hosting an Afternoon Tea together with a speaker. This gives us time to catch up with W.I Members from other groups.

A summer outing is being planned for July or August, more details will be announced when finalised.

If you are interested in joining us, we still require a Secretary to take minutes, type them up and distribute them to our members. This is all done on a computer.

Our President Carol Jones, has entered us into the Scrapbook Challenge organized by Head Office. Carol is collecting items for this and will collate them for the scrapbook.

The Fire Service will be giving a talk at our May meeting.

We hold our meetings on the 1st Tuesday of each month, starting at 7.30pm at Caddington Social Club, Manor Road. Please come along to have a fun and interesting evening with us.

**Carol Jones 07899 794422**  
**Linda Edwards 07761 340108**

# St Andrew's Woodside Community Coffee Morning

Tea, coffee, conversation and good company



**Saturday 25th May**  
**10.00 am to noon**  
**at St Andrew's Church**

We will have jigsaws and books for sale,  
plus hand-made and upcycled jewellery by Angela  
& amazing artwork from Paula.  
(10% of sales from Paula's art and cards will go to Cancer  
Research.)

Drop in at any time. All welcome.

Contact Julie on 413912 if transport is a problem.

## Chiropodist

*State Registered*

**Home visits Evening &  
Weekend appointments**

*Keith Appleby BSc (Hons), MChS, SRCh*

**Telephone: 01582 873136**

**A. McClelland  
Pest Control**



For fast response call  
Mobile 0777 494 8415  
or office 01582 872158

email: amcclellandpestcontrol133@gmail.com

**Charisma**

**Hair & Beauty Salon**

**Ladies &  
Gentlemen**  
**01582 722801**



**Opening Times**

Mon: Closed  
Tues: 9-5  
Wed: 9-1  
Thurs: 9-7  
Fri: 9-6  
Sat: 8-3

*Easy Parking!*

43B Elm Avenue, Caddington  
[www.charisma-caddington.com](http://www.charisma-caddington.com)



*Find us on facebook*



**Need a reliable  
Window &  
Carpet Cleaner?**

*We operate in the  
Slip End area  
For free quotation  
contact us on  
01462 629302  
07970 406 926*



# Richard Gurney & Son Contracting Services

Longview, Luton Road, Markyate

*Tree Surgeons & Fencing Specialists  
Hedge Trimming & Tree-stump removal  
Wood Chippings (good for mulching)  
Logs for Sale*

**Tel. (01582) 840407**

*Established 1970 - Fully Insured*

## Hydrotech Plumbing

Your local plumbing and heating engineers:

- Boiler breakdown and servicing
- New Boiler installation
- Landlords gas safety certification
- Gas fire installation and servicing
- All gas and plumbing work undertaken
- Fully insured
- Free quotations

MARKYATE based company

**01582842889 07932796632**



## P H SERVICES

CAR & MOTORCYCLE REPAIRS  
PHILIP HALL  
MECHANIC

4 Servicing 4 Bodywork  
4 Tyres 4 MOT  
4 Computer Diagnostics



**UNIT 3  
MANOR ROAD GARAGE  
CADDINGTON**

**Office: 01582 72251  
Mobile: 07769 734417**

*Damaged bikes wanted for Cash  
Nationwide collection  
e-Mail: philhall1200@btinternet.com*



**10% Discount with this voucher!**

## STROBE ELECTRICS

**ELECTRICIAN**

**NIC APPROVED**

ESTABLISHED 25 YEARS

**House Rewires Part P REG**

**No Job Too Big or Small**

**For a job well done**

**Quality Assured**

**Call Graeme**

**01582 451442 or 07956 570692**

**Problems  
with your  
PC or  
Apple-mac?**



*For expert advice & trouble shooting  
call Tony Glynos, 458353 or 07792 653264  
[tonyglynos@outlook.com](mailto:tonyglynos@outlook.com)*

*Friendly*

**Karen Jordan**

**07970487338**

**Grass Cutting**

**Weeding**

**Strimming**

**General Tidying**



*Reliable*

*Local*

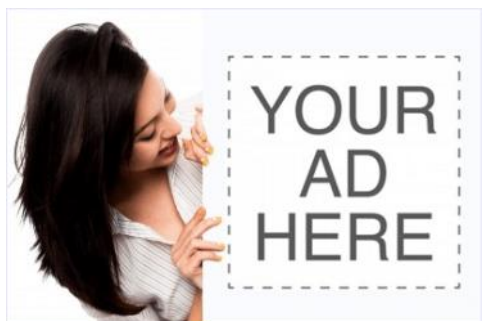
## PILATES IN SLIP END

Tuesday morning, Peter Edwards Hall 9.30am  
Wednesday evening, Slip End School 7.30pm

All ages & levels catered for. Come & try, first class free.

Introducing the Pilates Reformer Machine. Ideal for rehabilitation after injury or surgery. Perfect for sport specific training, Pre & Post Natal & general fitness.

For more information contact 07811343566 or email:- [golf58.ag@gmail.com](mailto:golf58.ag@gmail.com)





# Slip End Parish Council



## D Day Celebrations – 8<sup>th</sup> June 2024 Village Hall – Slip End

### Remembering D-Day and the Battle of Normandy

The D-Day landings of 6<sup>th</sup> June 1944 was the largest seaborne invasion in history. Along with the associated airborne operations, it marked the beginning of the liberation of France and western Europe.

**Slip End Parish Council** is organising an afternoon tea event for the residents of Slip End, Woodside, Aley Green and Pepperstock on Saturday 8<sup>th</sup> June 2024 to mark the 80<sup>th</sup> Anniversary of D-Day. It will be a tea party with music of the time and information about D-Day and War on the Home Front. Dressing up is optional.

We need some help from residents, to volunteer to help organise / run the event.

We also would like to hear from anyone who has any family stories photographs of war time in the parish of Slip End which they are happy to include in our War on the **Home Front Display**.

We want it to be a great event, everyone is invited, so please save the date in your diaries.

I intend to hold a meeting for all those who are interested in helping and I will let you know the date as soon as I have numbers. I look forward to hearing from you.

If you can help, please contact me:

Clerk: Tracey O'Neill – [clerk@slipendparishcouncil.co.uk](mailto:clerk@slipendparishcouncil.co.uk)

Contact: 07487 805249



# ALL ABOUT

## PLANNING



## ALL ABOUT PLANNING

### Planning applications submitted within the Parish since March 2024

Application CB/24/00972/FULL.

Submitted 4<sup>th</sup> April 2024

66 Markyate Road, Slip End, LU1 4BX

Removal of existing garage & conservatory. Construction of new single storey rear extension.

**Decision:** Not Yet Decided

For further information on applications visit [www.centralbedfordshire.gov.uk](http://www.centralbedfordshire.gov.uk) to view planning applications. If you wish to comment on an application email: [planning@centralbedfordshire.gov.uk](mailto:planning@centralbedfordshire.gov.uk)

## Good Neighbours Scheme Annual General Meeting.



The AGM was held on Friday 22nd March at Slip End Village Hall , starting at 7:30.

Following the Chairmans and Treasurers Report which highlighted events held during the year and the schemes finances. The committee stood down and was re-elected unanimously.

Following the end of the meeting, it turned in to a social gathering during which cheese and wine was served.





**BUILDING & ROOFING Co.**

**EXTENSIONS - CONVERSIONS - RENOVATIONS**

- ✓ Restoration ✓ New Build
- ✓ Flat & Pitched Roofing
- ✓ All General Building Work
- ✓ Painting & Decorating
- ✓ Electrical Works & Plumbing
- ✓ Brickwork Contractors
- ✓ Patios & Driveways ✓ Fencing
- ✓ Groundworks/Drainage
- ✓ Insurance Work
- ✓ Garage Conversions
- ✓ Public Liability Insurance

**EXTENSIONS • CONVERSIONS • RENOVATIONS**

[www.inkermanbuilding.co.uk](http://www.inkermanbuilding.co.uk)

**The Complete Design  
Plan-Completion Service Included**



**Tel: 01727 835702 or Mobile: 07774 95255**

**Tel/Fax: 01582 876509**

Email: [info@inkermanbuilding.co.uk](mailto:info@inkermanbuilding.co.uk) • 46 Church Road, Slip End, Bedfordshire LU1 4BJ

## Why practice self-defence?



Join us for our NEW children's class starting 6.30pm on Thursday 1st June at the Lyons Community Centre - First Class free! Teaching children the essential skill of self-defence. Contact us on 07956 286930 to book your child's place.

Shinrai Martial Arts teaches Jujitsu and kickboxing giving you two Martial Arts styles in one club. These are just some of the benefits to people of all ages.

- Promotes physical fitness, strength and flexibility
- Builds confidence and awareness
- Learn potentially lifesaving skills
- Strong social aspect where many friendships can be made
- Discipline
- Lose weight
- Fun

Children (ages 6 – 15) Monday 6.15pm - 7.15pm  
Thursday 6.30pm - 7.30pm  
Women only (16+) Monday 7.30pm - 8.30pm

**TEASHA MITCHELL**

2ND DAN BLACKBELT JUJITSU  
1ST DAN BLACKBELT KICK BOXING  
DBS CHECKED

NATIONAL BLACKBELT REGISTERED

MEMBER OF BRITISH MARTIAL ARTS AND BOXING ASSOCIATION



**Location:**  
Find us at the brand new Lyons Community Centre in Caddington Woods,  
33A Mallard Crescent,  
Caddington,  
Luton.

To book or for further information please email Sensei Teasha Mitchell  
[teasha@shinraimartialarts.com](mailto:teasha@shinraimartialarts.com)

**Find out all about us at [www.shinraimartialarts.com](http://www.shinraimartialarts.com)**  
Shinrai Facebook Page: Shinrai Martial Arts

# @WAYNE'S

*Professional Hairdressing  
for all the family*



@WAYNE'S - Church Road, Slip End - 01582 294 248

## Butterfly Funerals

INDEPENDENT FAMILY  
FUNERAL DIRECTORS

To find out more or just have a discussion  
on what you need to do after a bereavement

please call

**01582 968130**

or visit our website:

[www.butterflyfuneralsltd.co.uk](http://www.butterflyfuneralsltd.co.uk)

**39 Elm Avenue, Caddington  
Luton LU1 4HS**

*Caring with Compassion*

Butterfly Funerals is run by Teresa and Peter who have been in the funeral service business for over 30 years. During that time they have gained a first class reputation for professional quality combined with a caring and compassionate approach to family and friends of the departed.

Services include:

- 24 hour call out 7 days a week
- Traditional funerals
- Bespoke funerals Pre-paid funerals
- Green funerals
- Memorial consultants
- Chapel of Rest
- Home visits
- Flowers
- Custom wills

## St Andrew's Church Easter news

On Saturday March 30th Community Coffee took place at St Andrews, with many attending. Led by Paula Baird with Steve helping her, there was a competition for the best Easter Bonnet. Mary Barker took first prize and kindly displayed her lovely bonnet, along with a medal made by Paula.



Well done Mary. Love the hat.



Paula and friends enjoying a nice chat. There is always tea and coffee available, plus a selection of cakes and biscuits. There was also an Easter quiz and cards to buy, plus lots of books that are sold to help pay for church flowers. Please come along if you can next month.

The flower team, minus their leader Diane who had been in hospital, did a wonderful job with some beautiful flowers for Easter in Church.



## Easter news continued



### *Easter flowers in remembrance of loved ones for the Church family.*

The next Community Coffee will be on April 27th 10—12 at the Church. . Hope you can make it. Everyone welcome and it's always lovely to sit and chat to old and new friends. Books always for sale, and leader Paula usually brings along some of her wonderful hand made cards. .

*Report by Sue Briggs*

## GOOD NEIGHBOURS SCHEME Easter Party



The Good Neighbours Scheme Easter party was held on Wednesday 27th March between 3:30 and 5:30. Tea Coffee and home made cakes were available.

When we had finished eating, we played 4 games of Bingo ably called by our favourite Josie, 2 games for one line and two for a full house, with cash prizes.

Following the Bingo, a raffle was held with plenty of prizes.

An enjoyable time was had by all. Thank you to all volunteers , helpers and food servers.





## CRIME STATS FOR MAY 2024

### Aley Green

None

### Pepperstock

None

### Slip End

Theft from a Motor Vehicle - 3

Other Criminal Damage – 2

Assault without Injury – 2

Other theft – 2

Public fear alarm or distress - 1

Theft from a person - 1

Assault with Injury – 1

**Total – 12**

### Woodside

None

### Caddington

Public fear alarm or distress - 4

Shoplifting – 2

Criminal damage – residential – 1

Assault without injury – 1

Possession of firearms offences – 1

Interfering with a motor vehicle – 1

Race or Religiously Aggravated Public Fear – 1

Residential burglary-home – 1

Theft from a Motor Vehicle – 1

Malicious communications – 1

Assault with Injury – 1

Possession of Controlled Drugs (cannabis) - 1

**Total – 16**

**CLlr Sarah Minnighan  
Chairman  
Slip End Parish Council  
Tel: 07868 742904**



*Diary - If you would like your events included, please contact the Editor*

### What's going on in 2024

**Weekly** Soup and a Sandwich Tuesday 12-2pm Rising Sun—see poster p5

**Weekly** Chatty Club every Wednesday Rising Sun 2pm—4pm

#### May

**Mon 13th** Parish Council Meeting Village Hall 7pm

**Sat 25th** Coffee Morning St Andrews Church 10am

#### June

**Sat 8th** D-Day Tea Party Village Hall

**Mon 17th** Gardening Club Village Hall 8pm (see page 10)

**Sat 29th** Open Gardens (see page 11)

#### July

**6th July** Slip End Village Day

### Parish News Online

For those who like to read magazines on tablet / screen, Parish News can be found online at:-

[www.slipendparishcouncil.co.uk](http://www.slipendparishcouncil.co.uk)

and

[www.slipend.co.uk](http://www.slipend.co.uk)

where historical copies can also be found.

### Bin Collections - May

Orange - 3rd, 17th, 31st May

Black bin and Glass - 10th, 24th, May

Food Waste bin - Every Friday

Green - 3rd, 17th, 31st May (Only if you have subscribed for collection)



## COMMUNITY AND SERVICES

|                                         |                                              |                        |
|-----------------------------------------|----------------------------------------------|------------------------|
| <b>Services:-</b>                       | <b>Good Neighbour Scheme:</b> 07513 37 24 15 |                        |
| <b>Shop at the Crossroads</b>           | 401069 Mon—Sun 7.00 to 21:00                 |                        |
| <b>Slip End Garage</b>                  | Markyate Road, 456888                        |                        |
| <b>Doctor</b>                           | Caddington Surgery 725673                    |                        |
| <b>Doctor</b>                           | Markyate Surgery 841559                      |                        |
| <b>Pharmacy</b>                         | Medigreen, Caddington 457800                 |                        |
| <b>Schools:</b>                         | <b>Slip End Village School</b> 720152        | <b>Manshead</b> 679400 |
| <b>Caddington Village School</b> 726058 | <b>St Mary's Catholic Primary</b> 602420     |                        |

|                                                                                                                                                                                                                                                                                                                                                                                                                                                                                                                                                                                                                                                                                                                            |                                                                                                                                                                                                                                                                                                                                                                                                                                                                                                                                                                                                                                                                                                                                         |                                                                                                                                                                                                                                                                                                                                                                                                                                                                                                                                                                                                                                                                                                                                                                          |
|----------------------------------------------------------------------------------------------------------------------------------------------------------------------------------------------------------------------------------------------------------------------------------------------------------------------------------------------------------------------------------------------------------------------------------------------------------------------------------------------------------------------------------------------------------------------------------------------------------------------------------------------------------------------------------------------------------------------------|-----------------------------------------------------------------------------------------------------------------------------------------------------------------------------------------------------------------------------------------------------------------------------------------------------------------------------------------------------------------------------------------------------------------------------------------------------------------------------------------------------------------------------------------------------------------------------------------------------------------------------------------------------------------------------------------------------------------------------------------|--------------------------------------------------------------------------------------------------------------------------------------------------------------------------------------------------------------------------------------------------------------------------------------------------------------------------------------------------------------------------------------------------------------------------------------------------------------------------------------------------------------------------------------------------------------------------------------------------------------------------------------------------------------------------------------------------------------------------------------------------------------------------|
| <p><b>Churches:-</b></p> <p><b>St Andrew's Church</b><br/> <b>Rev Nick Mwandia</b><br/>         01582 253537<br/>         07398663729<br/> <a href="mailto:revstandreww@gmail.com">revstandreww@gmail.com</a><br/> <b>Julie Taylor (Reader)</b><br/>         01582 413912<br/>         Mob 07841482119<br/> <a href="mailto:duncan.taylor@btinternet.com">duncan.taylor@btinternet.com</a><br/> <b>Wardens:</b><br/> <b>Steve Baird</b> 738205</p> <p><b>Aley Green Methodist Church.</b><br/> <b>Minister:</b><br/> <b>Rev Nigel Bibbings</b><br/> <b>Senior Steward:</b><br/> <b>Ann Meader</b> 733668</p> <p><b>Sport:-</b><br/> <b>Bowling Club</b> 412506<br/> <b>Football</b><br/>         517042 or 07515687160</p> | <p><a href="mailto:wayne@dngsales.co.uk">wayne@dngsales.co.uk</a></p> <p><b>Pepperstock Archers</b><br/>         07914 381847<br/>         Email<br/> <a href="mailto:targetsports@virginmedia.com">targetsports@virginmedia.com</a><br/>         m (Chris Ingram)<br/> <b>Tennis</b> 733253<br/> <b>Runners</b> Peter Barber<br/>         07587 89260.</p> <p><b>Slip End Veterans Football</b><br/>         Wayne Leslie (see football)<br/> <b>Line Dancing</b> —Jean<br/>         Anderson 01582 2603030</p> <p><b>Community:-</b><br/> <b>Gardening Club</b> 423622</p> <p><b>Brownies</b> 723109<br/> <b>Beavers,</b><br/> <b>Cubs &amp; Scouts</b> 418014</p> <p><b>Pre-School</b> - Hayley<br/>         Bolton- 07889824367</p> | <p><b>FoSELS</b> 07810002942 PTA)<br/>         or <a href="mailto:fosels@outlook.com">fosels@outlook.com</a></p> <p><b>Women's Institute</b> O1582<br/>         737036</p> <p><b>Chatty Club</b> Jean Turner 01582<br/>         421304 or Cathy Rose 01582<br/>         457362</p> <p><b>Book Club</b> (contact via<br/>         Parish News)</p> <p><b>CaSeBuG (Caddington and<br/>         Slip End Bus user group).</b><br/> <a href="mailto:info@casebug.org">info@casebug.org</a></p> <p><a href="http://www.slipend.co.uk">www.slipend.co.uk</a></p> <div style="text-align: center;">  </div> <p><a href="http://Slipendparishcouncil.co.uk">Slipendparishcouncil.co.uk</a></p> |
|----------------------------------------------------------------------------------------------------------------------------------------------------------------------------------------------------------------------------------------------------------------------------------------------------------------------------------------------------------------------------------------------------------------------------------------------------------------------------------------------------------------------------------------------------------------------------------------------------------------------------------------------------------------------------------------------------------------------------|-----------------------------------------------------------------------------------------------------------------------------------------------------------------------------------------------------------------------------------------------------------------------------------------------------------------------------------------------------------------------------------------------------------------------------------------------------------------------------------------------------------------------------------------------------------------------------------------------------------------------------------------------------------------------------------------------------------------------------------------|--------------------------------------------------------------------------------------------------------------------------------------------------------------------------------------------------------------------------------------------------------------------------------------------------------------------------------------------------------------------------------------------------------------------------------------------------------------------------------------------------------------------------------------------------------------------------------------------------------------------------------------------------------------------------------------------------------------------------------------------------------------------------|

### Items for the next issue (June) to us by 15th May 2024

(Editor — Matt) Adverts by 10th please

Any delivery problems? Contact Alan Buttery at 1 Claydown Way  
 (01582 724527), [alanjan4546@gmail.com](mailto:alanjan4546@gmail.com)

Anything interesting to report about village activities, photos, holidays, etc.  
 Please contact us, letters and e-mails are encouraged.

Views expressed by our contributors are not the Editors' own.

Articles should be sent by the 15th of the preceding month to the Editors - John Larsen  
 1 The Grove, Woodside Park or Matt Freeman 20 Crawley Close  
 or e-Mail [parishnews@slipend.co.uk](mailto:parishnews@slipend.co.uk)

Advertising queries to Jo Moss 01582484373 or [Parishadverts@gmail.com](mailto:Parishadverts@gmail.com)

Parish News is grateful to our advertisers for their contributions. Please support them.

## YOUR PARISH COUNCILLORS

Clerk to Parish Council — Tracey O'Neill 07487 850249 (9am to noon weekdays)  
[clerk@slipendparishcouncil.co.uk](mailto:clerk@slipendparishcouncil.co.uk)

|                                                                                                                      |                         |
|----------------------------------------------------------------------------------------------------------------------|-------------------------|
| Sarah Minnighan - <a href="mailto:s.minnighan@slipendparishcouncil.co.uk">s.minnighan@slipendparishcouncil.co.uk</a> | 07868 742904 (Chairman) |
| Carol Beeton - <a href="mailto:c.beeton@slipendparishcouncil.co.uk">c.beeton@slipendparishcouncil.co.uk</a>          | 405597                  |
| Carol Brennan - <a href="mailto:c.brennan@slipendparishcouncil.co.uk">c.brennan@slipendparishcouncil.co.uk</a>       | 07979 402847            |
| Simon Patterson - <a href="mailto:s.patterson@slipendparishcouncil.co.uk">s.patterson@slipendparishcouncil.co.uk</a> | 07767 615714            |
| Paul Shaw - <a href="mailto:p.shaw@slipendparishcouncil.co.uk">p.shaw@slipendparishcouncil.co.uk</a>                 | 07957 188947            |
| Steve Baird - <a href="mailto:s.baird@slipendparishcouncil.co.uk">s.baird@slipendparishcouncil.co.uk</a>             | 01582 738205            |
| Stuart Durdell - <a href="mailto:s.durdell@slipendparishcouncil.co.uk">s.durdell@slipendparishcouncil.co.uk</a>      | 07527 389531            |

## GOOD NEIGHBOUR SCHEME (GNS) 07513 37 24 15

### WHO DO I CALL?

**Fly Tipping (CBC)** 0300 300 8000 [Customer.Services@centralbedfordshire.gov.uk](mailto:Customer.Services@centralbedfordshire.gov.uk)  
**Road issues:-** [www.centralbedfordshire.gov.uk/reportit](http://www.centralbedfordshire.gov.uk/reportit)

**Police** 101      **Aircraft noise** 395382 or [noise@ltn.aero](mailto:noise@ltn.aero)

**Airparks** 393321      **Water leaks** 0800 3765325      **Cold Calling** 0345 4040506

**Out of hours noise** 0300 300 8098      **Street Lighting** 0300 300 804

### Your Central Beds Councillors



Contact details



Cllr Kevin Collins

Cllr Vicky Malone

[kevin.collins@centralbedfordshire.gov.uk](mailto:kevin.collins@centralbedfordshire.gov.uk)

[councillorvicky@gmail.com](mailto:councillorvicky@gmail.com)

### MP's

**Contact details**  
**Rachel Hopkins**



*Her local office is located at:  
3 Union Street Luton LU1 3AN  
For advice, surgery appointments  
call 01582 457 774*

### PETER EDWARDS HALL & PLAYING FIELD

Ideal for children's & adult's parties, meetings, etc.

Kitchen facilities with catering service available

Available for various sports activities

Excellent sports changing facilities

Facilities for the Disabled

For Bookings: please contact

[PEHall@slipendparishcouncil.co.uk](mailto:PEHall@slipendparishcouncil.co.uk)

### SLIP END VILLAGE HALL

*Your Village Hall*

for Dances, Receptions & Parties

Facilities for the disabled

*For bookings contact*

*villagehall@slipendparishcouncil.co.uk  
or Gill Plummer on 01582 723109*

## ESTABLISHED 1939



### NEW SALES



We always have great offers available including high deposit contributions, upgrade packages, free service packs and highly competitive finance options.

To find out more about our latest offers, visit us online or call our sales department now.



### USED SALES



Here at Slip End Garages we have a fantastic choice of used cars for sale. Our stock is always changing and currently includes used Citroën, Subaru and Isuzu vehicles.

We are always updating our website with our current stock visit us online or call now.



### PARTS



Whilst being one of the largest Citroën Dealerships in the Home Counties we also have one of the largest supply of vehicle parts and accessories available.

Whatever you need, we are here to help, just give our parts department a call.



### SERVICE



We have over 73 years of Vehicle maintenance experience with a full collection and delivery service available to our customers as well as provide courtesy cars for service and MOT.

Call our service department and we will take care of all of your service requirements.

**LOCAL RESIDENTS RECEIVE A FURTHER £200 DISCOUNT ON ALL NEW AND USED VEHICLES + SPECIAL RATES ON ALL SERVICING**

## Slip End Garages 01582 456888

Markyate Road Slip End, Luton, Bedfordshire, LU1 4BU

Our Service Centre is located in Grove Road, Slip End

Email: [info@slipendgarages](mailto:info@slipendgarages)

[WWW.SLIPENDGARAGE.CO.UK](http://WWW.SLIPENDGARAGE.CO.UK)