

# **SLIP END & DISTRICT PARISH NEWS**

**JANUARY & FEBRUARY 2006**



*During a busy December schedule, Father Christmas found a few moments to drop in on the Mums & Tots in the Village Hall. Father C has written to Parish News thanking all those in Slip End and round about who left mince pies and glasses of sherry out for him. He says that the reindeer are taking a breather at the moment and he likes to get his feet up in January. Then he says, he will enjoys a bit of gardening which helps get his waistline down before starting work on the Christmas 2006 campaign.*

# The Parish @ Large

## **SCHOOLS**

*Slip End Lower: 720152  
Five Oaks: 726058  
Streetfield: 613421  
Ashton: 663511  
Manshead: 608641*

## **SPORT**

*Bowling Club: 412506  
Tennis: 733253  
Darts League: 425323  
Football: 733156  
Cricket: 414157*

## **HALLS**

*Village Hall: 723109  
Peter Edwards Hall: 455185*

## **COMMUNITY**

*Brownies: 723109  
Beavers: 725297  
Cubs: 414168  
Fly Tipping (SBDC): 472222  
Friendship Club: 720392  
Slip End Assoc: 414796  
Mother's Union: 738435  
Playgroup: 728865  
Toddler Group 405931  
Allotments: 736892  
FoSELS (PTA):  
[alexa.mcpherson@btinternet.com](mailto:alexa.mcpherson@btinternet.com)  
Women's Institute: 421034  
Police: 471212*

## **PARISH COUNCILLORS**

*Christine Benson: 456200  
[Christinebenson@bensons-autosupplies.co.uk](mailto:Christinebenson@bensons-autosupplies.co.uk)  
Stephen Fuell: 417792  
[stevefuell@f2s.com](mailto:stevefuell@f2s.com)  
Philip Penman: 455185  
[PhilipPenman@aol.com](mailto:PhilipPenman@aol.com)  
Geoff Daniel: 424363  
[Geoff@daniel67.freemove.co.uk](mailto:Geoff@daniel67.freemove.co.uk)  
Ken Crossett 414168  
[kencrossett@slipend.co.uk](mailto:kencrossett@slipend.co.uk)  
Mike McKeivitt: 720596  
[mike.mckeivitt@mndassociation.org](mailto:mike.mckeivitt@mndassociation.org)*

*Clerk to the Parish Council - David Haste:  
10 Highwood Grove, Mill Hill, NW7 3LY  
[Davidhaste7@aol.com](mailto:Davidhaste7@aol.com)*

## **DISTRICT COUNCILLORS**

*Anne Spencer 713267  
[anne@connorspencer.com](mailto:anne@connorspencer.com)  
Philip Penman: 455185  
[PhilipPenman@aol.com](mailto:PhilipPenman@aol.com)  
Ruth Gammons 738398  
[fairgreen@btopenworld.com](mailto:fairgreen@btopenworld.com)*

## **COUNTY COUNCILLOR**

*Richard Stay: 724685  
[Richard.Stay@bedscc.gov.uk](mailto:Richard.Stay@bedscc.gov.uk)*

## **CHURCHES**

***St Andrew's Church**  
Rev Joy Daniel 01582 424363  
Wardens: David Kingston 416138  
Ken Crossett 414168*

***Aley Green Methodist Church**  
Minister: Rev Julia Dowding 730129  
Senior Steward: Ann Meader 733668*

## **SHOPS & SERVICES**

***Post Office:** At the Crossroads, telephone 401069  
Monday to Friday 6.30 to 21.00  
Saturday 7.00 to 21.00 - Sunday 7.30 to 21.00  
**Garage:** Slip End Garage, Markyate Road, telephone 456888*

**Website: [slipend.co.uk](http://slipend.co.uk)**

*Dear Gardener,*

Slip End hosted our second 'Open Gardens' day in 2004. This again proved to be a very popular event and was enjoyed by over 100 visitors.

This year we are planning a similar event on Saturday, 24<sup>th</sup> June. We are again looking for 10 to 12 gardens, big or small. This is not a competition and your garden does not have to be anything special. We just want you to be enthusiastic about it.

Any money raised will go towards the cost of redesigning and replanting the Coronation Garden and to the St Andrew's church roof appeal.

If you live in the Parish and would be interested in taking part or for further information, please fill in the accompanying form and return it to me by the end of February. Several people expressed an interest in 'opening' their gardens after the last event, so if you are one of them please fill in the form or send me an e-mail.



*Val Church*

**OPEN GARDENS 2006 ENTRY FORM**

*If you would like to take part in the Open Gardens Day on Saturday, 24<sup>th</sup> June, 2006, please complete the form below and return it by the end of February to: Valerie Church, The Old Bakery, 2 Summer Street, Slip End or e-mail to [val-church@slipend.fsworld.co.uk](mailto:val-church@slipend.fsworld.co.uk)*

I would like to 'open my garden' on 24<sup>th</sup> June, 2006

I need more information

Name .....

Address .....

Telephone number .....

e-mail address .....

## OPERATION CHRISTMAS CHILD



We managed to get all the remaining cartons onto the lorry December 10<sup>th</sup> and wave it a fond farewell and God Speed. It had been an amazing month of collecting, checking, sealing and packing in the Dunstable warehouse. Volunteers came from all around to help and turned up as many times a week as they could. The gifts were amazing! Hats, gloves, scarves, blankets, children and baby clothes: I think our team of knitters have been hard at it all year long, so many thanks to all concerned. By the final count we had checked, sealed and packed 16000 boxes, which were sent to Ukraine and Crimea. There were also boxes of new clothes, knitted

blankets, baby items, soft and large toys for hospitals, orphanages and schools. We hope the children who received the boxes will love and treasure their contents, I am sure they did. A huge thank you to Teresa and Tony Willson and the volunteers! One last thing to say, same time next year?

*Sue Cowell*



*The final day with some of the volunteers*



*The lorry ready to go with the final boxes loaded up for the Crimea.*

### *General Work*

Burn rubbish and vegetable stumps, wisdom in this prevents pests multiplying. When the ground is frozen hard and cannot be dug is the ideal time for wheeling out manure and putting it in handy heaps for spreading and digging in as soon as conditions improve. Do not dig soil immediately after a thaw nor during or immediately after a heavy fall of snow, for then it is too wet on the surface to break up properly.

Look over stored vegetables, remove any that have gone rotten.

### *Vegetable Garden*

Regular readers of this column will not need reminding but if you have not already done so, protect the curds of broccoli as they commence to form, put in a few broad beans, for early supply, plant out earliest cabbage.

### *Flower & Fruit*

Prune bush and standard roses. Complete fruit tree pruning, and also these should also be sprayed From now on onwards birds are very liable to attack the buds of fruit trees, particularly pears, plums and gooseberries, The best protection, for small bush fruits is a properly constructed fruit cage covering the whole plantation. Pear and plum trees can be protected by passing black thread from twig to twig but this can be rather boring, an easy way is to spray with a strong wash, to make the buds so bitter the birds will leave them alone.

# Brownies



Father Christmas paid us a visit at our end of year party, giving everyone a present.

We are planning for the next few months, which will include knotting.

Our Christmas dinner at Henlow was enjoyed by all who attended. In the New Year will shall now meet on Thursday January 12th, 26th February 9th, 23rd before reverting to our regular weekly pattern.

### *Reg Saphin*

We lost Reg Saphin, one of our members just before Christmas, he will be missed. Reg was born in London in 1916. He went on to become a Physical Training instructor in the Police Force as well as being a footballer, playing for teams such as Ipswich, Queens Park Rangers and Watford. Later on he worked in the printing trade up to his retirement

Reg and his wife Freda moved to Pepperstock 17 years ago, but sadly Freda died. Reg was a member of the Friendship Club and supported the Bingo every week. He also loved dancing and attended the Dances at the Village Hall, he also used to play bowls for Luton West End. Reg was on his way to Hastings with his son in his car when he suffered a heart attack.

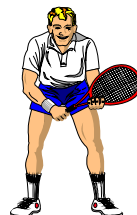
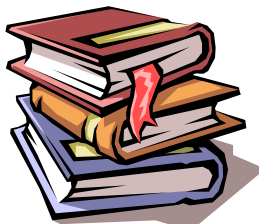
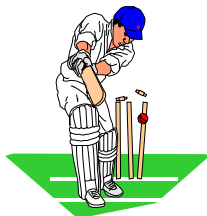
### *An Ancient Prayer*

Give me a good digestion Lord  
 And also something to digest  
 Give me a healthy body, Lord  
 With sense to keep it at its best.  
 Give me a healthy mind, O Lord  
 To keep the good and pure in sight,  
 Which seeing wrong is not appalled,  
 But finds a way to set it right.

Give me a mind that is not bored,  
 That does not whimper, whine or sigh.  
 Don't let me worry overmuch  
 About that fussy thing called "I".  
 Give me a sense of humour; Lord,  
 Give me the grace to see a joke,  
 To get some happiness from life  
 And pass it on to other folk.

***SLIP END TENNIS CLUB***

# ***QUIZ NIGHT***



**Saturday 4<sup>th</sup> March**  
**Peter Edwards Hall**  
**Slip End Playing Field**

**Teams maximum of 8 People**

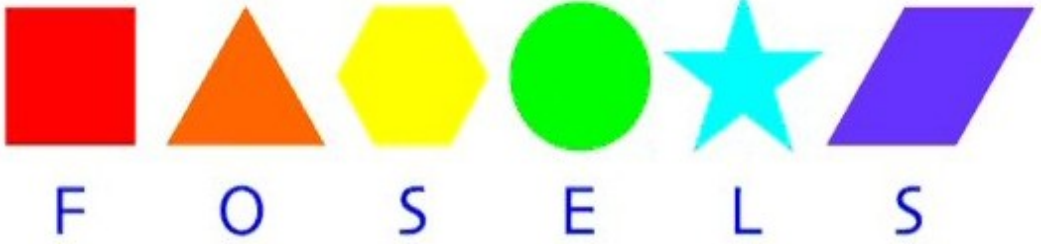
**£6 per person including Supper**

**Bring your knives & forks, drinks & glasses**

**Doors open 7.30pm for 8.0pm start**

**Contact Steve for tickets on 414162**





### ***Friends of Slip End Lower School***

We start the year by saying a big thank you to everyone who came along to our Christmas Fayre last month and helped us to raise a wonderful £1311! This will go towards funding various activities, buying new equipment and for trips for the children at Slip End Lower School.

*Every year we receive generous donations from three local businesses which go towards making the events so successful, so I'd like to give a special mention and thank you to Airparks, Slip End Garage and Fantastic Fireworks.*

### **Christmas Assembly**

The term ended with the children putting on a super Nativity play with lots of songs and carols for all the parents, families and friends to enjoy. Well done to all those who took part and the teachers for all their hard work and effort.

### **New Year News**

Due to the unexpected closure of the school for a day towards the end of last term, class parties were postponed to the beginning January, which got the term off to a fun start. The children enjoyed a great afternoon with party food and the chance to swap their uniforms for their smartest party clothes and play games.

Other treats planned for the Spring term include a visit from a theatre group who will perform Beauty and the Beast. Plus there is a Woodwind recital by Bedfordshire Music who will also come to the school this month.

Years 3 and 4 will also get to meet the Captain Safety Roadshow at the end of the January to help them learn about road safety.

So as you can see there is plenty happening at the school this January.

### **New Faces**

There are some welcome new additions to the staff this term with Mrs Susan Patterson joining to teach in the Foundation Unit and Mr Cameron Clark, from Premier Sport, who will be teaching PE classes for years 1 to 4 on Wednesdays.

We'll update you on our future fund raising events in the coming months and as always we welcome ideas and suggestions from parents and friends alike. If you are interested in helping out at either an event or joining the FoSELS team then please talk to Alexa McPherson or any of the committee.

*Happy New Year!*

*Sandra Collins*

## **HAVE YOU SEEN OUR BANNER?**

*The Banner which advertises our Summer Fayres and Christmas Bazaars, went missing from the hedge at the corner of Markyate Road & Rossway recently. If you know where it is please contact the school and we will arrange collection.*



### **Off to Pastors New!**

We said farewell to James Fotheringham in January, as he leaves with Rachel and their family for New Zealand.

James retires as chairman of FoSELS we are grateful to Alexa McPherson who will be taking the chair.

Alexa presented him with a Back Pack which will be useful for James' Antipodean travels and exploration! Rachel, a Radiographer by profession, has a job to go to in New Zealand and James hopes to make links down there to continue his church ministry.

On behalf of FoSELS and the whole School, Alexa thanked James and Rachel for their huge contribution to the school and community at large. We wish them well in their new adventure: they will be sorely missed.

Matt Ogier-Russel was at hand at the presentation to photograph James with some of the FoSELS committee at the presentation.

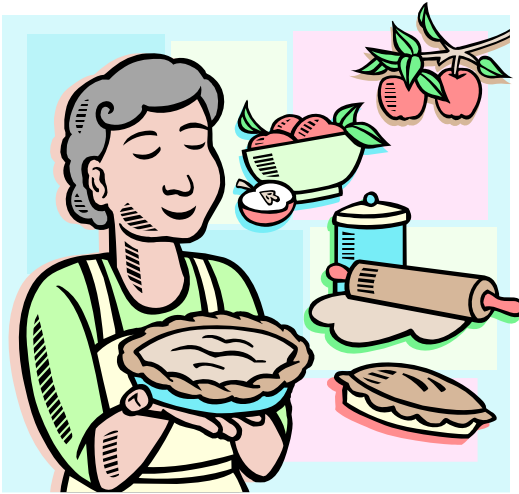
*Left to right: Michelle Freeth, Sandra Collins, Alexa McPherson (with Matthew), James Fotheringham, Nikki West (with Natasha ) Liz Meleady & Sue Tredwell*



*Low-sugar  
apple crumble*

Preheat oven to 180°, 350°, gas mark 4. Peel, core and slice 550gm (1lb 4oz) bramley apples and place in a saucepan with 10ml (2 tsp) low-calorie sweetener and 15ml (1tbsp) lemon juice. Cover and cook on a low heat until apples are softened. Transfer apples to ovenproof dish. Melt 25gm (1oz) butter and stir in 100gm (3½oz) digestive biscuits, crushed, until well mixed. Stir in 100gm (3½oz) chopped mixed nuts. Spoon biscuit mixture over the apple mix evenly. Bake for 20 minutes until tender. Delicious!

*Feel like a low-calorie change on your cereal?  
Try grated apple instead of sugar.*



*Showing the world*

If you've a song, try it  
If you've a tear, dry it.  
If you've a cross, bear it.  
If you've a joy, share it.

When hope grows faint, brace it.  
When trouble comes, face it.  
Where there's a wrong, right it.  
When life is grim, fight it.  
If you've a hand, give it.  
If you've a creed, live it.  
If you've a faith, show it,  
And let the world know it

*Patience Strong*

Should a deep depression centre over you,  
Feeling very sorry just wont get you through;  
Raging, sulking, weeping ain't no use,  
that's plain.  
Sing! And while you're singing,  
skies will clear again.

*Francis Gay*

**Services & Events in January**

*Midweek Communion*s take place monthly at two venues in Slip End, details from Joy.

Tuesday 17 <sup>th</sup>	7.30 pm	Alpha course at the Vicarage
Thursday 19 <sup>th</sup>	8.00 pm	<i>Footsteps</i> meet
Sunday 22 <sup>nd</sup>	9:15 am	Holy Communion at Holy Trinity, East Hyde
	10:30am	Morning Praise
	6.15 pm	3:16 meet in the Family Room
Tuesday 24 <sup>th</sup>	7.30 pm	Alpha course at the Vicarage
Wednesday 25 <sup>th</sup>	10.30 am	Pram service in the Family room
Friday 27 <sup>th</sup>	2.30 pm	Woodside Home service
Sunday 29 <sup>th</sup>	10.30 am	Morning Praise
Tuesday 31 <sup>st</sup>	7.30 pm	Alpha course at the Vicarage

**February**

Thursday 2 <sup>nd</sup>	8.00 pm	Footsteps in the Family Room
Saturday 4 <sup>th</sup>	10.30am	Celebration of Christian Healing at St Albans Abbey
Sunday 5 <sup>th</sup>	10.30am	Family Communion
	6.15pm	3;16 meet in the Family Room
Wednesday 8 <sup>th</sup>	10.30 am	Pram Service in the Family Room
Sunday 12 <sup>th</sup>	10.30am	Morning Praise
	2.00pm	St Andrew's Ramblers meet
Sunday 19 <sup>th</sup>	10.30am	Holy Communion
Wednesday 22 <sup>nd</sup>	10.30am	Pram Service in the Family Room
Friday 24 <sup>th</sup>	2.30pm	Woodside Home Service
Sunday 26 <sup>th</sup>	9.15 am	Holy Communion at Holy Trinity East Hyde
	10.30am	Morning Praise
	2.30pm	Service of Thanksgiving and Blessing
	6.15pm	3;16 meet in the Family Room
Monday 27 <sup>th</sup>	7.30pm	PCC meet in the Family Room

**March**

Wednesday 1 <sup>st</sup>	7.30pm	Ash Wednesday Holy Communion
Thursday 2 <sup>nd</sup>	8.00pm	Footsteps meet in the Family Room

**Back to Normal**

Our Christmas celebrations offered a wide variety of services and worship, a busy but gratifying time. The children of ZJB, ably directed by their leaders put on a splendid Nativity Play, and this, the Carol Services and Christmas Day worship were well attended as usual.

Christmas is a great time for us to welcome visitors and this year some had travelled thousands of miles to be with us.

An innovation this year, in place of our Carol Singing round the village, was a group who

sang at Luton Airport. This was enjoyed, not by the singers but also the travellers, many of whom found time to stop, join in and contribute to our collection in aid of Cancer Research.

**Pram Service**

*Just to mention one group amongst several which have now resumed: the Pram "Service" meet on alternate Wednesday mornings in the Family Room where a warm & cosy welcome awaits all Mums/Carers with their Tots for a fun time, refreshments and chat.*

## **LUTON AIRPORT EXPANSION**

I have been concerned for some time about the proposed expansion of Luton Airport from a regional airport to an international one rivaling Heathrow. Following a meeting I arranged in the village hall at the end of November, I'm pleased to say that so are a significant number of you. Particularly as the incoming flights will move to the middle of Slip End!

The airport was here when we moved to the village nearly twenty years ago and we took that into consideration when we bought our house and accepted that there would be aircraft noise from time to time. The airport has increased considerably over that period of time and we have not complained, but just because it was there first does not mean we have to accept any amount of growth that they decide they want and I am extremely concerned about the proposal they currently have on the table because I think they are after a two runway airport by the back door!

I am horrified at the amount of greenbelt which will be lost if their proposal goes ahead, because we are not just talking about the land for the new runway, but a huge swathe of countryside which will be lost to property developers for associated businesses (were you aware for instance that Beds CC have already been approached to put a coach depot on the field at the back of Summer Street)? Fortunately it was turned down, but for how long? We already have Airparks in the village which is off site airport parking, this would need to expand if future passenger numbers come to fruition and even if they don't get the passenger numbers they are talking about, it will be too late, the countryside will be gone!

I don't have anything against Luton, I shop there regularly, but I like living in a village and I don't want to become part of Luton, if you don't either then help me fight against the expansion of Luton Airport.

***Say "No to Jumbo jets!" Together we can make a difference.***

*Rosemary Wickens*

*An exaggeration perhaps? The Airbus A380 is bigger than a 747 and alignment of the proposed runway would put landing aircraft directly over the Village Hall.*



---

## A LETTER FROM DORSET

---

Isn't Christmas a good time for, amongst many other pleasant things, maintaining contact with old friends. Admittedly the first contact with Slip End at the approach to Christmas was the incredible picture sent by David Kingston by e-mail of the huge black cloud over Hemel Hempstead taken from his bedroom window. But since then we have had many cards from Slip End folk and they all bring back happy memories of days gone by.

We had a relatively quiet Christmas which was none the less enjoyable for the true meaning of the occasion somehow came through all the church services and local social functions.

The gap between Christmas and New Year was neatly filled by my being invited by a local friend to join him in the signal box at Corfe Castle, and there I was able to pull levers controlling the signals and points for the steam trains calling at the station.

Many young boys want to be engine drivers (yes, they still do, as evidenced by the number of youngsters having the joy of being invited up into the cab of the steam locomotive). But in later years the allure fades as you realise just how cold, damp and filthy life is really like on the footplate of a steam locomotive where you are open to the elements and there is coal dust everywhere. How much better to be in the cosy warmth of a signal box with its shiny metal levers, so polished that you must only pull them with a cloth in your hands.

The first intimation of action is the bell

ringing from the next signal box to tell you a train is on its way; you then see a distant plume of smoke and begin to hear the beat of the engine. That morning had been frosty and one of the signals would not budge as the pulleys leading to it had become frozen up; Michael, my friend from Swanage, was concerned that this would hold the next train up and after several fruitless attempts to move the signal a fifth pull on the lever eventually moved it and shortly afterwards the train pulled into the station. I was surprised at the number of people on the train, mostly families with young children for whom a ride on a steam train was an excellent extra Christmas treat.

One of the reasons for us moving from Slip End to Dorset in 1999 (was it that long ago?!) was to be near a preserved steam railway and so my post-Christmas activity has justified the move, at least from that point of view. And I hear that they want to turn the Luton Dunstable railway into a guided bus-way; just as well that we moved when we did!

With best wishes for the new year to all folk in Slip End,

*Grenville & Dorothy Williams*



Thank you to all villagers who supported our events over the Christmas period. The Christmas fellowship meal found our lower school room, packed with people enjoying good food and company. The raffles and Tombola at this supper together raised £100 for Noah.

Our Sunday School children and teachers led the service and Nativity on 11th December. £69 was raised for Keech Cottage children's hospice. The Candle Light carol service was well attended: the collection and a tombola after the service raised £132 for National Children's Homes.

'SkyFry' of Caddington donated their small change jar to us (which contained £32) we added this to our Christmas day collection and raised a further £81 for the Pasque hospice.

The Aley Green Christmas card raised £45 for the Cooper Akmsen. Charitable trust for India

Last year we started having monthly coffee evenings, which proved to be a good place to have a nice friendly chat, pick up a book for 25 pence, a free drink and a wide range of homemade cakes and preserves to buy. They also made over £300 towards church funds.

The next coffee evening will be on February the 8<sup>th</sup> at 7:30, pop along and bring your friends.

The builders have started work on our church and porch & hope to be finished soon. Then the outside (we hope) should be in good shape! Now we need new heating in our lower school room, so we will be having a Beetle Drive on Saturday the 25<sup>th</sup> of February at 4:30 pm, tickets can be purchased by ringing myself (733668) children for £2 and adults for £4 (including afternoon tea). We will start with six games of beetle, followed by the tea. There will also be a tombola £1 a go, with the chance of winning a prize each time. Come along and join in the fun!!



God bless you all from Aley Green Methodist Church,.

*Ann Meader*

We hope all our readers had a very happy Christmas and New Year celebrations. All too soon 2006 is upon us and we once again start gathering news, photos, advertising, poems etc for the year ahead. If you would like to send details of your club, group or society or if you have done something interesting in the Christmas holidays please let us know. Details on the diary page.

This issue comes out at a slightly odd time. Taking a break in January we felt that too much time passed before the first new year issue in February. Hopes are to get this issue out by mid January to fill the gap before the next issue at the beginning of March.

### *Laughter*

Exasperated by droves of salesmen at her door an elderly lady posted a sign on the door that read "No casual callers". Her plan worked for three blissful weeks until she answered the door to a smartly-attired young man holding a clipboard. When she pointed at the notice he protested, "But I'm not casual: I'm wearing a suit and tie."

A nurse received a call from an anxious diabetic who was worried she had consumed too much sugar that day. "Are you light-headed?" asked the nurse. "No, I am a brunette," the caller replied.

One winter evening a night worker was driving to work when he noticed that a lorry was losing its load. The man flashed his headlights and beeped his horn, but the truck driver didn't notice and continued on his way. The worker then overtook the lorry and screeched to a halt in front of it. "I've been trying to warn you!" he called to the bewildered driver. "You're losing your load." "Actually sir," replied the driver. "I'm gritting the road."

**January**

21st Dance at the Village Hall: Call Shirley on 412506

27th Luton Airport Expansion: last date for responding to LIA's scheme

**February**

4th County Councillor's Surgery at Heathfield School, Caddington 10am-12noon

5th Lions International: Senior Citizens Celebration

8th Aley Green Methodist Church: Coffee Evening

11th Dance at the Village Hall: Call Shirley on 412506

25th Aley Green Methodist Church: Beetle Drive

**March**

4th County Councillor's Surgery at Heathfield School, Caddington 10am-12noon

4th Tennis Club Quiz Night—Peter Edwards Hall 7.30 for 8pm.

11th Good as New Sale: Aley Green Methodits Church

11th Dance at the Village Hall: Call Shirley on 412506

25th Craft Fayre at the Village Hall: Call Gill Plummer on 723109

**April**

1st Dance at the Village Hall: Call Shirley on 412506

22nd Aley Green Methodits Church Spring Fayre

**May**

6th Dance at the Village Hall: Call Shirley on 412506

**June**

10th Craft Fayre at the Village Hall: Call Gill Plummer on 723109

24th Open Gardens Day: 11am to 5pm

**RSPB BIRDWATCH 28-29 JANUARY 2006**

The 2006 Big Garden Birdwatch takes place this month. Watch the birds in your garden or local park for an hour on either day. Note down the birds you see and tell the RSPB the highest number of each species you see at any one time in the hour (This avoids counting the same birds twice.) For more details, see [www.rspb.org.uk/birdwatch](http://www.rspb.org.uk/birdwatch).



*OK, you Ornithologists:  
what species is this?  
Answer next month.*

Anything interesting to report about village activities, photos, holiday adventures, etc? Please contact us. Articles should be sent by the 15th of the month before publication to: Sue Cowell 83 The Crescent, Caddington; [parishnews@slipend.co.uk](mailto:parishnews@slipend.co.uk) or David Kingston 7 Crawley Close, Slip End [davidgoodmanking-ston@hotmail.com](mailto:davidgoodmanking-ston@hotmail.com). Delivery enquiries to Brian Church 2 Summer Street on 458443. Advertising enquiries to Steve Lyons, on 414162 [SteveSueLyons@aol.com](mailto:SteveSueLyons@aol.com)

Printers: Hardy Clarke Creative Ltd, Park St, Luton Tel: 749991 [www.hardyclarke.com](http://www.hardyclarke.com)

**FANCY A TWIRL?**

Did you know that regular Dances are held in the Village Hall? On Saturdays, once a month there's a lively session including a live band .



Dates appear on the Diary page of Parish News. We dance to a live band, all styles included to suit everyone. Cost is just £5, which includes a plated buffet! B-Y-O drinks for an enjoyable night out at modest cost.

**Call Shirley Knapton on 412506 beforehand so that catering arrangements can be made.**



*Christmas celebrations took place at churches and schools all over the country as, more than just a “happy holiday” we remember Christ’s birth in a Bethlehem stable. Pictures here show Nativity scenes at St Andrew’s and Skip End School*



*Then, at 6am on December 11th, we had this as a wake-up call. This is the view from Crawley Close as Buncefield burns. Miraculously there were no fatalities and injuries were few although many people’s lives remain affected in the Hemel Hempstead area.*

